

INSTALLATION INSTRUCTIONS

1344 - TO SUIT MERCEDES BENZ C CLASS SEDAN 94-ON & WAGON 10/96- 07/01 **PLEASE READ INSTRUCTIONS THROUGH BEFORE YOU BEGIN**

WARNING : 1. Do not drill, cut weld or otherwise modify the towbar.
 2. If you are using electric welding on a motor vehicle, always check that the vehicle is not equipped with electronic engine or instrument management equipment. Failure to do so could destroy any onboard computers. If in doubt, check with the vehicle's manufacturer.

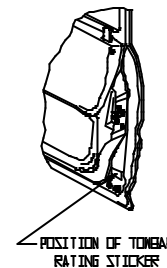
1. Ensure all hardware items have been included.
2. Sedan only: Remove boot carpet, disconnect and remove battery. Remove jack complete with plastic mounting cradle. Remove exhaust system off rubber hangers. Remove heat shield.
3. Wagon only: Remove rear floor section. Remove spare wheel, disconnect and remove battery. Remove plastic pocket on driver's side. Remove jack complete with plastic cradle. Remove exhaust system off rubber hangers. Remove heat shield, lift sound deadening material to expose passenger's side sub frame, remove foam blocks to expose pop marks.
4. Refer to diagram A. Remove seam sealer material to expose centre pop marks. Drill these positions out to 13mm.
5. Refer to diagram B. Fit driver's side mounting bracket inside sub frame to align with holes drilled in step 4.
6. Fit driver's side forward bracket inside sub frame to align with holes inside and underneath the sub frame. Fit bolts and plates as shown in diagram. (**NOTE:** Do not tighten yet.)
7. Fit passenger's side mounting arm inside sub frame to align with holes drilled in step 4.
8. Refer to diagram C. Remove seam sealer material to expose centre pop mark on passenger's side approximately 420mm forward from holes drilled in step 4 and drill 11mm hole.
9. Locate and drill 11mm holes on passenger's side underneath vehicle, centre pop positions that align with mounting bracket fitted in step 7.
10. Fit passenger's side forward mounting bracket inside sub frame to align with holes drilled in steps 8 and 9.
11. Fit bolts and plates as shown in diagram.
12. Lift towbar into position and fit four M12x30 bolts as shown in diagram.
13. Tighten all bolts to torque listing below.
14. Refit all as in either steps 2 or 3.
15. Towbar rating sticker to be conspicuously located on inside rear end of the driver's door. (see diagram below)

RECOMMENDED ASSEMBLY TORQUE LISTING

<u>Diameter</u>	<u>Grade 4.6 Bolt</u>	<u>Grade 8.8 Bolt</u>
	<u>Nm</u>	<u>Nm</u>
M6	3.5	9.5
M8	8.6	21.7
M10	16.9	43.4
M12	29.8	77.3
M16	74.0	189.8

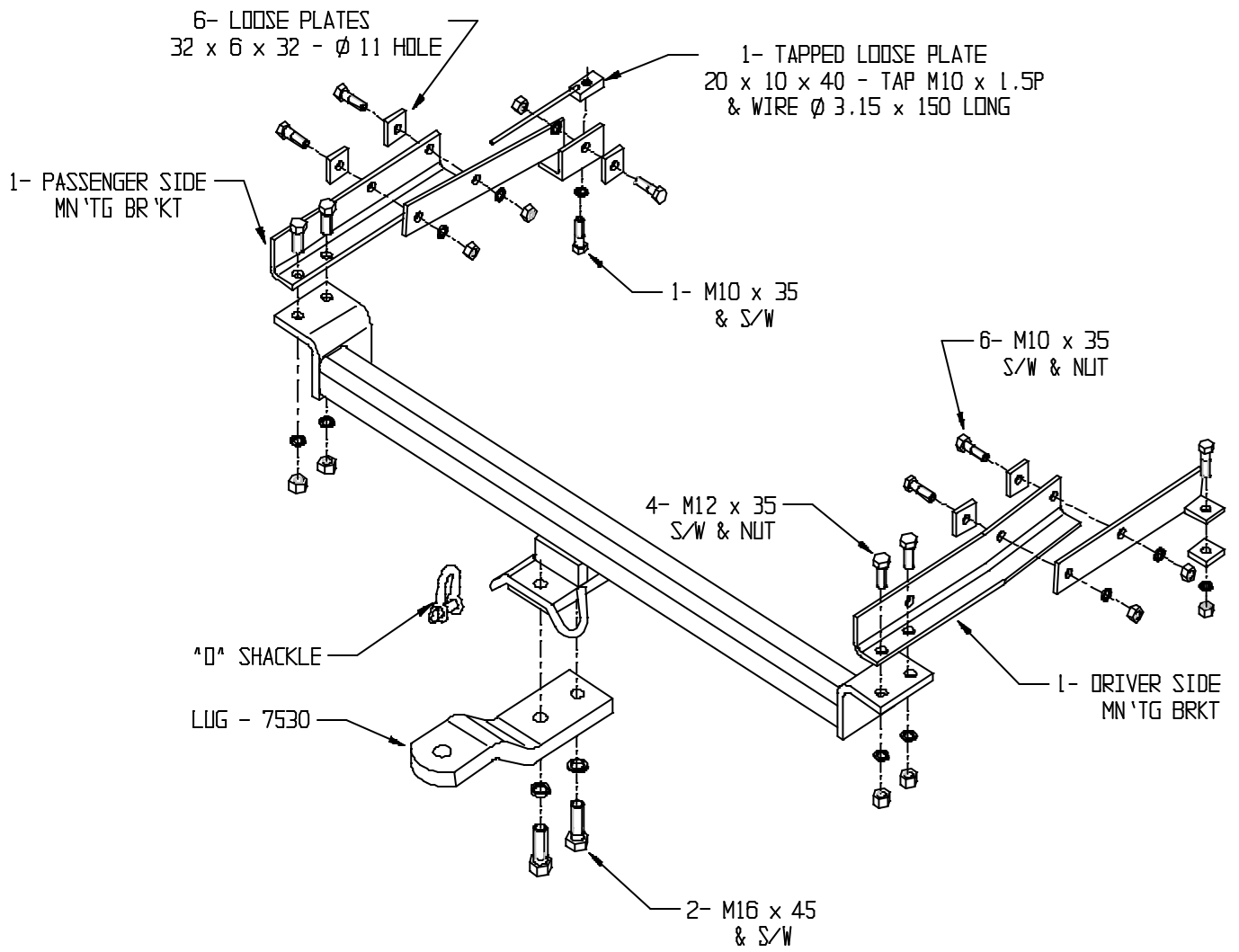
FOR TOWING PURPOSES ONLY

For towing capacity details please refer to vehicle owner's manual or to the manufacturer. Overloading can void your warranties.



PLEASE NOTE: You must remove the lug unless you are actually towing if it obscures your number plate. Failure to do so may result in a fine.
IMPORTANT: Please see over for safety chain hook-up procedure.

13.3.98



1344 - TO SUIT MERCEDES BENZ C CLASS SEDAN 94-ON & WAGON 10/96-ON

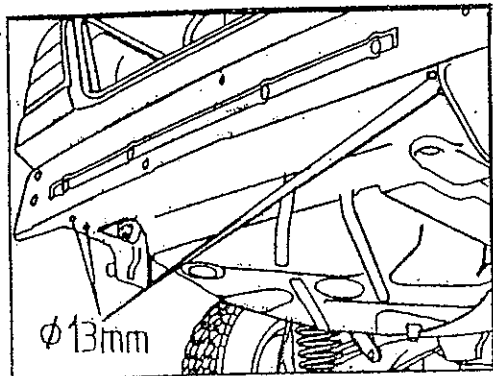
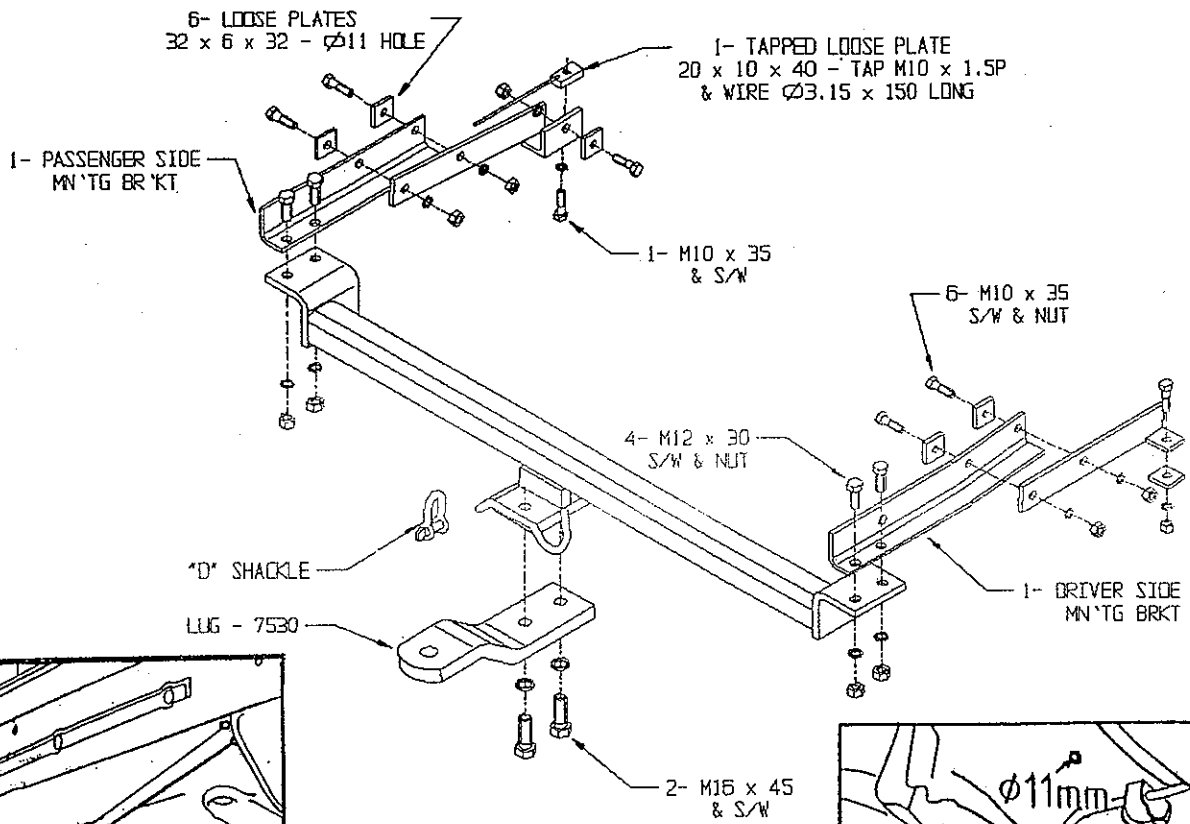


DIAGRAM A

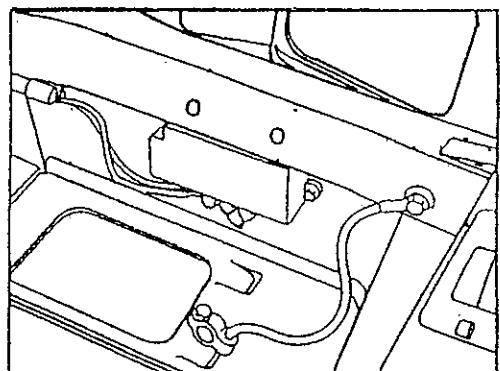


DIAGRAM B

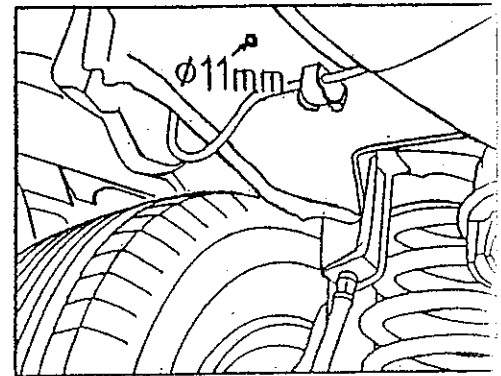
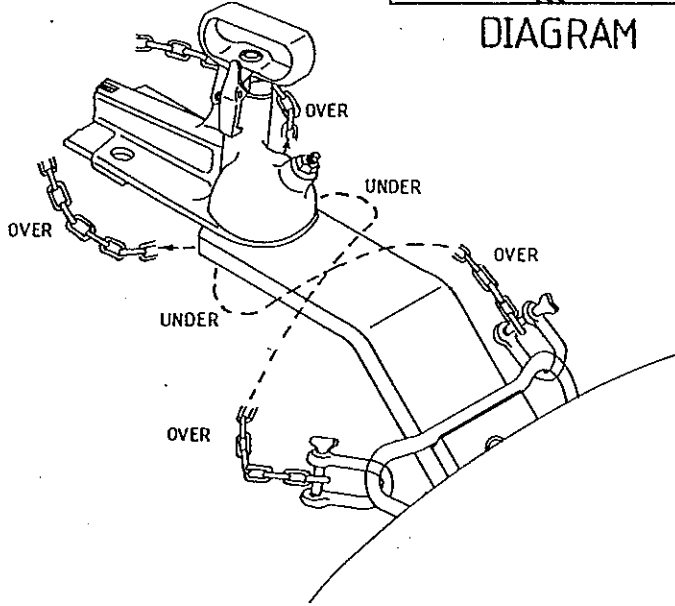


DIAGRAM C



Shown at left is our recommended safety chain hook-up procedure. Safety chains should be crossed both over and under the towbar lug. This will prevent the drawbar striking the ground in the event of a breakaway situation.

It may be necessary to extend the length of existing safety chains to achieve this type of hook-up.

REMEMBER : SAFETY FIRST - SAFETY LAST