

INSTALLATION INSTRUCTIONS



R2368-TO SUIT SUBARU TRIBECA

ENSURE INSTRUCTIONS ARE UNDERSTOOD BEFORE INSTALLATION.

Rating Braked 2000Kg

Rating Unbraked 750Kg

Max Static Ball Load 160Kg

Warning:

1. Do not, drill, cut, weld or otherwise modify the towbar.
2. If you are using electric welding on a motor vehicle, **always** check that the vehicle is not equipped with electronic engine or instrument management equipment. Failure to do so could **destroy** any onboard computers. If in doubt, check with the vehicle's manufacturer.

1. **General:** Ensure all hardware items have been included refer to assembly diagram.
2. It is recommended that the instructions are read through and completely understood before making any attempt to fit this product.
3. Be wary of any changes to vehicle designs or other accessories that may conflict with the installation of this product.
4. Before drilling ensure that the area is clear of fuel, electrical & other components.
5. All holes drilled into the body panels shall have all burrs & swarf removed then coated with a suitable rust preventative paint.
6. The high tensile fasteners supplied with this product were used to achieve the specified rating. If replacement is required ensure that fasteners of the same rating & quality are used. Contact an authorised **Hayman Reese** dealer if further information is required.
7. Ensure that all hardware is fastened to torque list below check fasteners on regular basis.
8. Towbar load rating sticker provided with this product shall be conspicuously located on inside rear end of the driver's door. **(See diagram below).**
9. Hayman Reese recommends that you check your tow ball to ensure that it complies with the Australian standards **AS 4177.2**.
10. **PLEASE NOTE:** It is advised to remove your lug or tbn when not actually towing so as to produce a clear view of the vehicles registration plate if obscured, and to also provide maximum available departure angle.

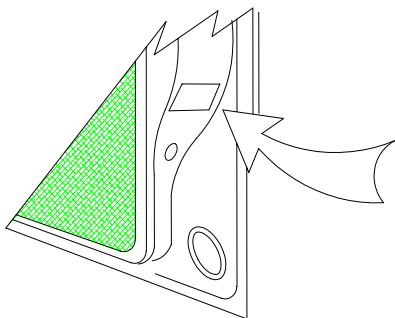
Tow bar Maintenance and Care.

Hayman Reese recommends that bolt torque's, as listed below, are routinely and regularly inspected and checked for correct tension. Replace any worn or defective parts.

We recommended to remove Tow Ball Mounts (TBM's, tongues or lugs) when not being used for any considerable length of time.

So as to avoid injury, when not towing it is suggested that the tongue, Pull Pin and R-clip are removed then stored in a safe, clean and dry place, away from excessive moisture.

Hitch Pull Pins and spring "R" clips are regularly checked for proper installation. Replace any worn or defective parts.



Place load rating sticker inside driver's door here

RECOMMENDED ASSEMBLY TORQUE LISTING

Diameter Grade 8.8 Bolt

M6	9.5 Nm
M8	21.7 Nm
M10	43.4 Nm
M12	77.3 Nm
M16	189.8 Nm

FOR TOWING PURPOSES ONLY

For towing capacity details please refer to vehicle owner's manual or to the manufacturer. Overloading can void your warranties.

INSTALLATION INSTRUCTIONS



R2368-TO SUIT SUBARU TRIBECA

ENSURE INSTRUCTIONS ARE UNDERSTOOD BEFORE INSTALLATION.

11. Remove bumper bar

- Remove 3 screws inside rear mid guard on both sides.
- Remove 1 plastic trim plug inside rear wheel arch on both sides.
- Remove 1 plastic trim plug under the mud guard on both sides.
- Remove 4 plastic trim plugs under the bumper bar, 2 on each corner and 2 in the centre.
- Remove the bumper bar by pulling rearward.

12. Remove impact beam

- Remove four M8 nuts from each side of rear impact beam
- Remove the impact beam lift then pulling reward, discard the rear impact beam.
- Retain the M8 nuts so that can be use to install towbar.
- Remove the centre impact section by remove 4 screws and discards refer figure 1.

13. Remove mufflers, heat shield and spare wheel

- Remove 2 bolts and nuts to free the muffler from the exhaust system on both sides refer figure 2.
- Remove the 2 rubber mounts to free the muffler from the vehicle on both sides refer figure 3.
- Remove 4 screws to remove heat shield on both sides.

14. Fitment the towbar via

- Insert towbar inside the chassis rail, position the rear mounting plate to the studs then push the tow bar mounting plate flush against the rear panel refer figure 4.
- Use M8 nuts from the impact beam to secure the towbar.
- Use M8x30 screws, spring washer, and flat washer provided to secure the centre mount refer figure 4.
- Use M10x30 screws, spring washer, and 25x3 loose plate to secure the towbar under chassis rail, refer figure 5.
- Torque all bolts and nuts to recommended torque refer page1, (Figure 6).

15. Bumper cut detail

- Establish centre line of bumper bar then mark out as detailed in figure 7
- Cut section of bumper with modified hacksaw or similar device.
- Reinstall the heat shield and mufflers in reverse order.
- Reinstall the bumper in reverse order.
- Reinstall spare wheel.

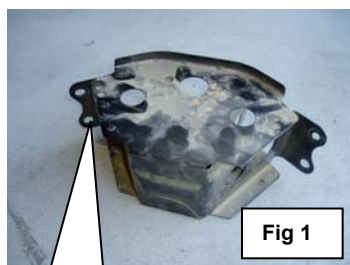


Fig 1

Remove centre section



Fig 2

Remove bolts and nuts to disconnect muffler

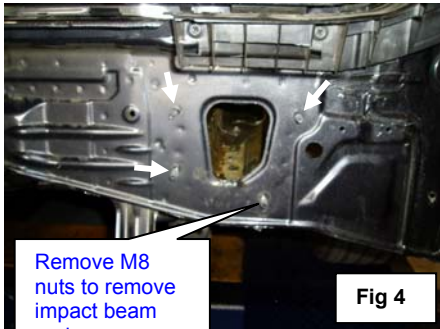


Fig 3

INSTALLATION INSTRUCTIONS

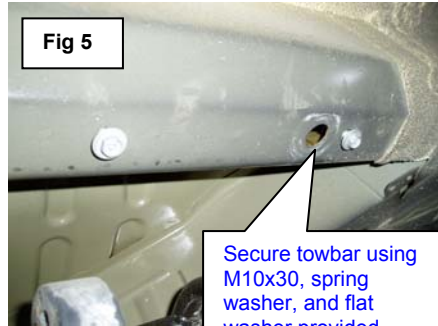


R2368-TO SUIT SUBARU TRIBECA
ENSURE INSTRUCTIONS ARE UNDERSTOOD BEFORE INSTALLATION.



Remove M8 nuts to remove impact beam and resecure using same nut

Fig 4



Secure towbar using M10x30, spring washer, and flat washer provided

Fig 5



Fig 6

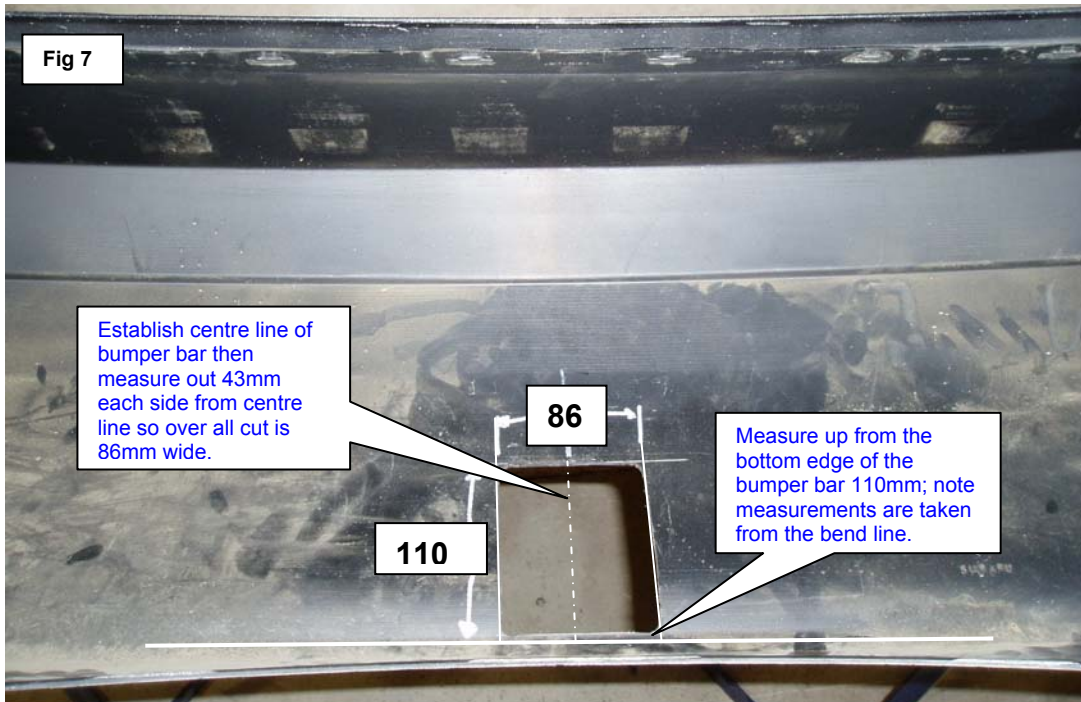


Fig 7

Establish centre line of bumper bar then measure out 43mm each side from centre line so over all cut is 86mm wide.

110

86

Measure up from the bottom edge of the bumper bar 110mm; note measurements are taken from the bend line.

INSTALLATION INSTRUCTIONS



R2368-TO SUIT SUBARU TRIBECA
ENSURE INSTRUCTIONS ARE UNDERSTOOD BEFORE INSTALLATION.

R2368 COMPLETE ASSEMBLY

