



INSTALLATION INSTRUCTIONS

RL2571W- TO SUIT SUZUKI JIMNY 2009 ON

PLEASE READ THOROUGHLY BEFORE BEGINING FITMENT

Please place these instructions in the Glove Box for Owner's Reference

Approximate Fitting Time : 30 min

WARNING : 1. Do not drill, cut weld or otherwise modify the towbar.
2. If you are using electric welding on a motor vehicle, always check that the vehicle is not equipped with electronic engine or instrument management equipment. Failure to do so could destroy any onboard computers. If in doubt, check with the vehicle's manufacturer.

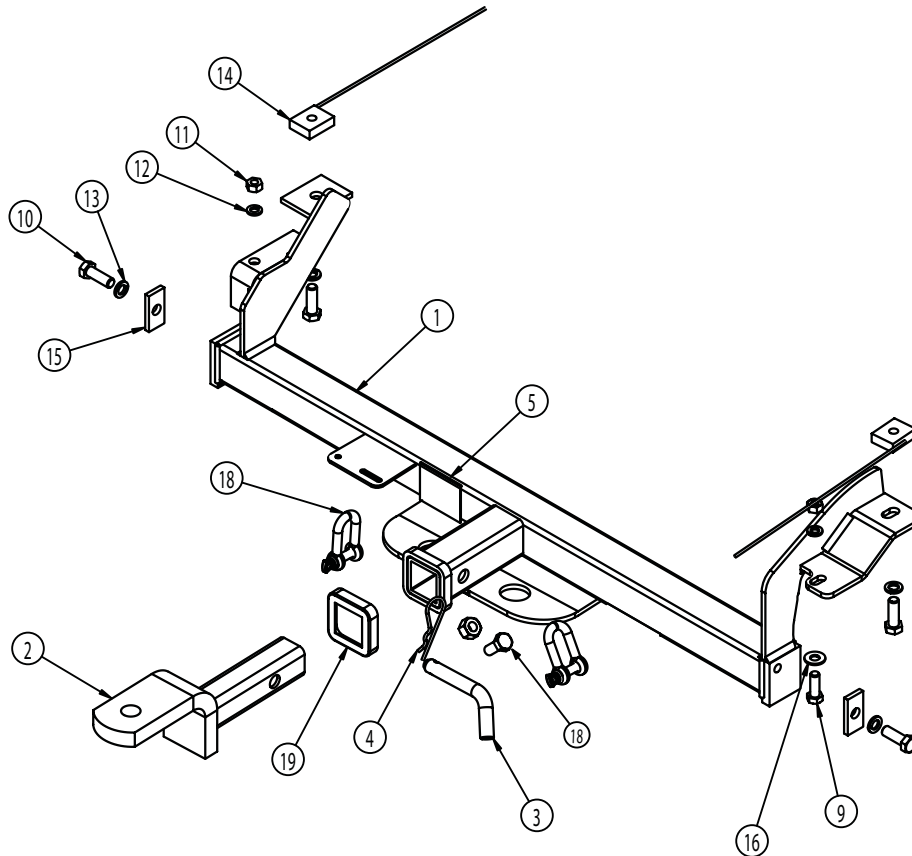
Max. Braked Towing Mass: 1300 Kg
Max. Tow Ball Download: 75 Kg
Max. Unbraked Towing Mass: 350 Kg

Hayman Reese does not recommend the fitting of load levelling or weight distribution devices.
This towbar is to be used for trailer towing only.

LIST OF COMPONENTS:

LOCATION	QTY.	DESCRIPTION	ITEM NO.	TORQUE
ASSEMBLY	1	WELDED ASSY SUZUKI JIMNY 2009	1	
ASSEMBLY	1	TRAILER BALL MOUNT	2	
ASSEMBLY	1	PULL PIN	3	
ASSEMBLY	1	SPRING COTTER PIN	4	
ASSEMBLY	1	CP (SUZUKI JIMNY)	5	
BOLT PACK	1	Fitting Instructions	6	
BOLT PACK	1	Warranty Card	7	
BOLT PACK	1	HAYMAN REESE LOGO STICKER	8	
BOLT PACK	2	M10 x 30 1.5P BOLT	9	49Nm
BOLT PACK	4	BOLT M12-1.75x40 GR8.8	10	85.2Nm
BOLT PACK	3	NUT M10 x 1.5 Z/P HX NUTS	11	
BOLT PACK	2	M10 X 3.5 X 2.2 SPRING WSHR	12	
BOLT PACK	4	M12 X 4.0 X 2.5 SPRING WASHER	13	
BOLT PACK	2	TAPPED PLATE & WIRE	14	
BOLT PACK	2	LOOSE PLT 25x6x50 Ø13	15	
BOLT PACK	2	Washer Flat M10 x 23 x 2 z/p	16	
BOLT PACK	1	BOLT M10-1.50 x 25	17	
BOLT PACK	2	D' SHACKLE	18	
BOLT PACK	1	RL H/BOX C/COVER BLANK	19	
BOLT PACK	1	LRL (SUZUKI JIMNY)	20	

ITEMS 6, 7 AND 8 ARE NOT SHOWN IN THE DRAWING



TOWBAR INFORMATION
(FOR TRAILER TOWING ONLY)

TOWBAR PART No. **2571RL**

MAX TOWBAR CAPACITY
TRAILER - **1300kg**
BALL LOAD - **75kg**

YOUR VEHICLE SPECIFIC RATING MAY DIFFER FROM THE ABOVE MAXIMUM RATINGS. PLEASE CHECK YOUR VEHICLE OWNERS HANDBOOK.

ALSO AVAILABLE:
- HAYMAN REESE GENUINE ACCESSORIES
- HAYMAN REESE WEIGHT DISTRIBUTION
- HAYMAN REESE CARGO BARRIERS

ITEM 20 - LOAD RATING LABEL

STEPS TO FIT TOWBAR

1. Ensure that all hardware items are included in the Bolt Pack.
Note: Removing the muffler may ease the fitment of the towbar. Refer to manufacturer's manual to remove the muffler. This is an optional step. However, the towbar can be fitted without removing the muffler.
2. Lift Towbar up into position (driver's side first) and fit M12 x 30 bolts, spring washers and loose plates through large slots in the vehicle towing hooks, as shown in Figure 1. Do not fully tighten yet.
3. Driver side shown, repeat the same for passenger side.

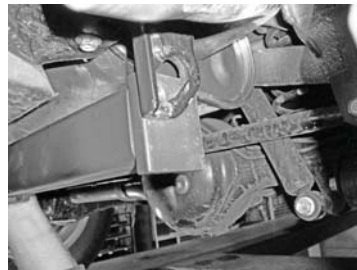


Figure 1

4. Fit tapped plate on wire up into the chassis rails and align with the hole at the bottom face of the chassis.
5. Fit M12 x 30 bolts and spring washers through most forward holes and align with tapped plates on wire.
6. Fit M10 x 30 bolts, spring washers and nuts in the most rearward mounting holes.
7. Tighten all bolts to the torque requirement listed in the components list on page 1.
8. Affix the towbar rating sticker conspicuously on the inside rear end of the driver side door. Refer to Figure 2.

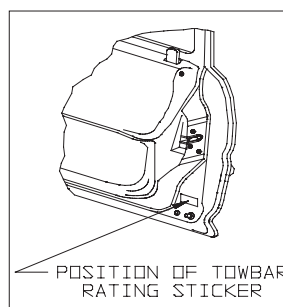


Figure 2

Please note: You must remove the Trailer Ball Mount unless you are towing, if it obscures your number plate or may cause injury. Failure to do so may result in a fine.

For towing capacity details, please refer to vehicle manufacturer's manual. Overloading can void warranties.

HAYMAN REESE
PART No: 100140-WL
SUZUKI JIMNY

INSTALLATION INSTRUCTIONS

PLEASE ENSURE THAT INSTRUCTIONS ARE UNDERSTOOD PRIOR TO FITMENT

Wiring Loom Installation Instructions

SUZUKI JIMNY
Part No: 100140-WL

Tail Harness Length Required: 1200mm
RPA Override Switch Part No: 04848 (If Fitted)

Wiring Loom Installation Time: Approx XX Mins

Issue Date 05-10-09

Page 1

Part No: 100140-WL

Hayman Reese (Cequent)
PO Box 4050, Dandenong South VIC 3164
Phone 1800 812 017 Email info@haymanreese.com.au

www.haymanreese.com.au



HAYMAN REESE
PART No: 100140-WL
SUZUKI JIMNY

INSTALLATION INSTRUCTIONS

PLEASE ENSURE THAT INSTRUCTIONS ARE UNDERSTOOD PRIOR TO FITMENT

1. Remove the following components from the vehicle:

- LHS tail light assembly (1).
- LHS and RHS lower tail light assembly (2).

Push the vehicle harness tail light connector back into the tail light cavity.

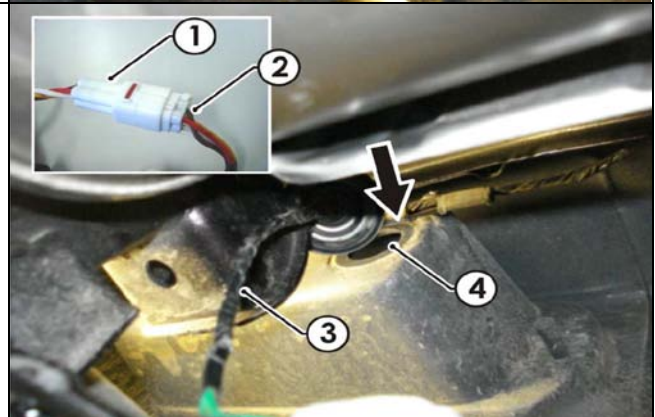


2. Locate the RHS lower tail light assembly harness (1), and push it into the vehicle bumper cavity.



3. On the trailer patch harness (P/No: 100140-WL), apply electrical grease or silicon on to the back of the two male 4-way connectors to make it water proof.
From underneath the vehicle in the bumper cavity, connect the trailer patch harness (1) to the vehicle harness RHS lower tail light connector (2).

Feed the other trailer patch harness 4-way female connector (3) through the grommet hole (4) ensuring the trailer patch harness grommet is seated correctly.

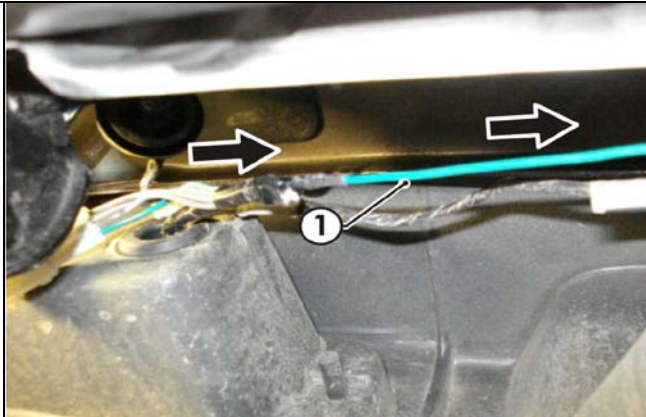


HAYMAN REESE
PART No: 100140-WL
SUZUKI JIMNY

INSTALLATION INSTRUCTIONS

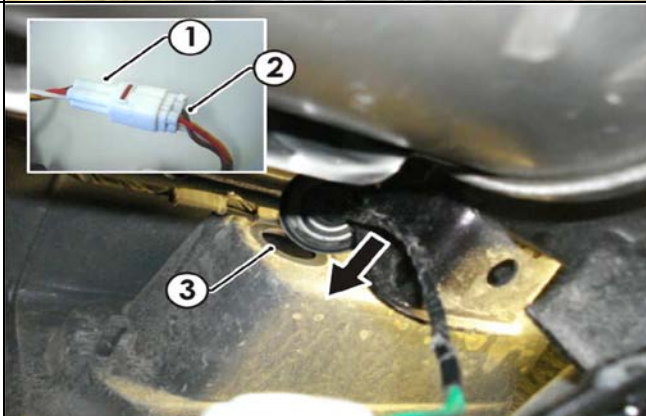
PLEASE ENSURE THAT INSTRUCTIONS ARE UNDERSTOOD PRIOR TO FITMENT

4. Continue routing the trailer patch harness (1) across to the LHS following the vehicle harness.



5. Connect the trailer patch harness 4-way male connector (1) to the vehicle harness LHS lower tail light connector (2).

Feed the other trailer patch harness connector through the grommet hole ensuring the trailer patch harness grommet (3) is seated correctly



6. Secure the trailer patch harness 6-way male connector (1) to a guide wire and route it into and up the LHS tail light cavity.



Issue Date 05-10-09

Page 3

Part No: 100140-WL

Hayman Reese (Cequent)
PO Box 4050, Dandenong South VIC 3164
Phone 1800 812 017 Email info@haymanreese.com.au

www.haymanreese.com.au



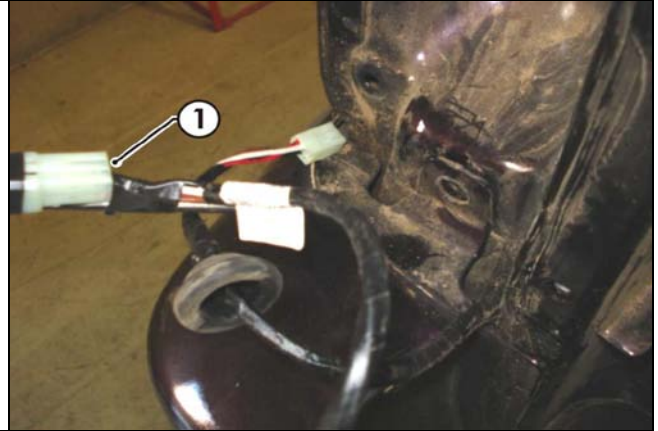
HAYMAN REESE
PART No: 100140-WL
SUZUKI JIMNY

INSTALLATION INSTRUCTIONS

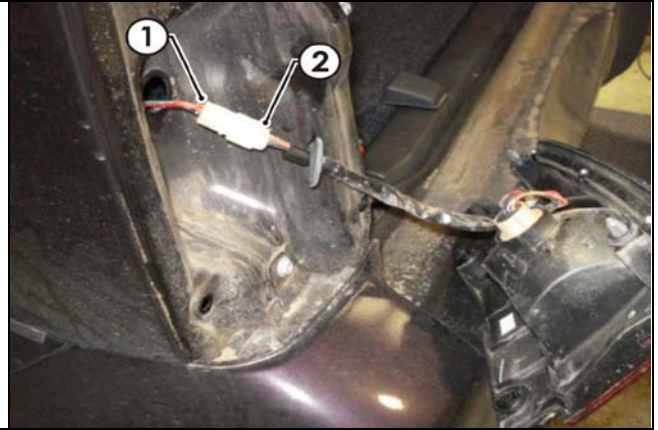
PLEASE ENSURE THAT INSTRUCTIONS ARE UNDERSTOOD PRIOR TO FITMENT

7. In the tail light cavity, retrieve the trailer patch harness 6-way male connector and discard the guide wire.

In the tail light cavity, connect the trailer patch harness male connector to the vehicle harness tail light connector.

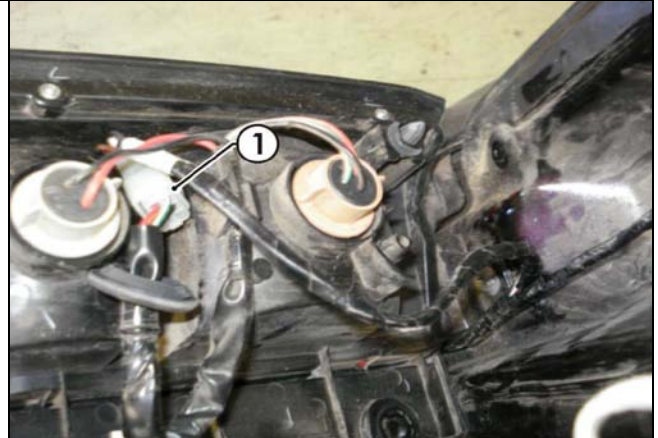


8. Connect the trailer patch 6-way female connector (1) to the tail light assembly connector (2).



9. Tuck away and secure the harness connector into place as shown (1).

Refit the tail light assembly.



Issue Date 05-10-09

Page 4

Part No: 100140-WL

Hayman Reese (Cequent)
PO Box 4050, Dandenong South VIC 3164
Phone 1800 812 017 Email info@haymanreese.com.au

www.haymanreese.com.au



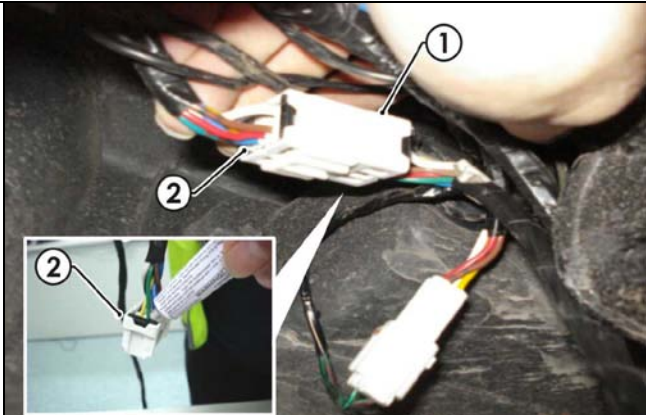
HAYMAN REESE
PART No: 100140-WL
SUZUKI JIMNY

INSTALLATION INSTRUCTIONS

PLEASE ENSURE THAT INSTRUCTIONS ARE UNDERSTOOD PRIOR TO FITMENT

10. Underneath the vehicle, apply electrical grease or silicon to the back of both the trailer patch harness tail connector (1) and the tail harness connector (Tail length: 1200mm) (2).

Connect both harnesses together.



11. Route and secure the tail harness socket (1) to the towbar mounting bracket using M4 fasteners.



12. Test the trailer harness using a light board or multi-meter.

Secure the Harness using cables ties.

Refit all removed parts and secure all fasteners ensuring there are no squeaks or rattles.

Place instructions in glove box after fitment.

Issue Date 05-10-09

Page 5

Part No: 100140-WL

Hayman Reese (Cequent)
PO Box 4050, Dandenong South VIC 3164
Phone 1800 812 017 Email info@haymanreese.com.au

www.haymanreese.com.au

