

HAYMAN REESE
PART No: **R2661W**
SUZUKI KIZASHI 2010

INSTALLATION INSTRUCTIONS

PLEASE ENSURE THAT INSTRUCTIONS ARE UNDERSTOOD PRIOR TO FITMENT



Installation Time: Approx 60 Mins

Towbar Installation Instructions
SUZUKI KIZASHI 2010

Towbar capacity

Part Number R2661W

Max Towing Braked 1700kg
Max Static Ball Load 75kg

Hayman Reese (Cequent)
PO Box 4050, Dandenong South VIC 3164
Phone 1800 812 017 Email info@haymanreese.com.au

HAYMAN REESE
PART No: R2661W
SUZUKI KIZASHI 2010

INSTALLATION INSTRUCTIONS

PLEASE ENSURE THAT INSTRUCTIONS ARE UNDERSTOOD PRIOR TO FITMENT

Warning:

1. Do not, drill, cut, weld or otherwise modify the towbar.
2. If you are using electric welding on a motor vehicle, **always** check that the vehicle is not equipped with electronic engine or instrument management equipment. Failure to do so could **destroy** any onboard computers. If in doubt, check with the vehicle's manufacturer.
1. **General:** Ensure all hardware items have been included refer to assembly diagram.
2. It is recommended that the instructions are read through and completely understood before making any attempt to fit this product.
3. Be wary of any changes to vehicle designs or other accessories that may conflict with the installation of this product.
4. Before drilling ensure that the area is clear of fuel, electrical & other components.
5. All holes drilled into the body panels shall have all burrs & swarf removed then coated with a suitable rust preventative paint.
6. The high tensile fasteners supplied with this product were used to achieve the specified rating. If replacement is required ensure that fasteners of the same rating & quality are used. Contact an authorised **Hayman Reese** dealer if further information is required.
7. Ensure that all hardware is fastened to torque list below check fasteners on regular basis.
8. Towbar load rating sticker provided with this product shall be conspicuously located on inside rear end of the driver's door. **(See diagram below).**
9. Hayman Reese recommends that you check your tow ball to ensure that it complies with the Australian standards **AS 4177.2**.
10. **PLEASE NOTE:** It is advised to remove your lug or tbn when not actually towing so as to produce a clear view of the vehicles registration plate if obscured, and to also provide maximum available departure angle.

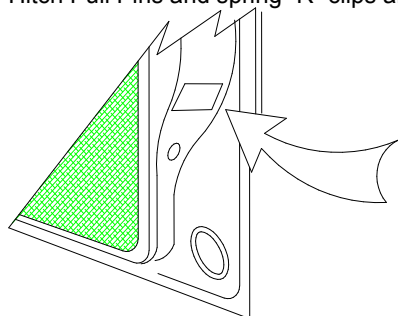
Tow bar Maintenance and Care.

Hayman Reese recommends that bolt torque's, as listed below, are routinely and regularly inspected and checked for correct tension. Replace any worn or defective parts.

We recommended to remove Tow Ball Mounts (TBM's, tongues or lugs) when not being used for any considerable length of time.

So as to avoid injury, when not towing it is suggested that the tongue, Pull Pin and R-clip are removed then stored in a safe, clean and dry place, away from excessive moisture.

Hitch Pull Pins and spring "R" clips are regularly checked for proper installation. Replace any worn or defective parts.



Place load rating sticker
inside driver's door here

RECOMMENDED ASSEMBLY TORQUE LISTING

Diameter Grade 8.8 Bolt

| | |
|-----|----------|
| M6 | 9.5 Nm |
| M8 | 21.7 Nm |
| M10 | 43.4 Nm |
| M12 | 77.3 Nm |
| M14 | 146 Nm |
| M16 | 189.8 Nm |

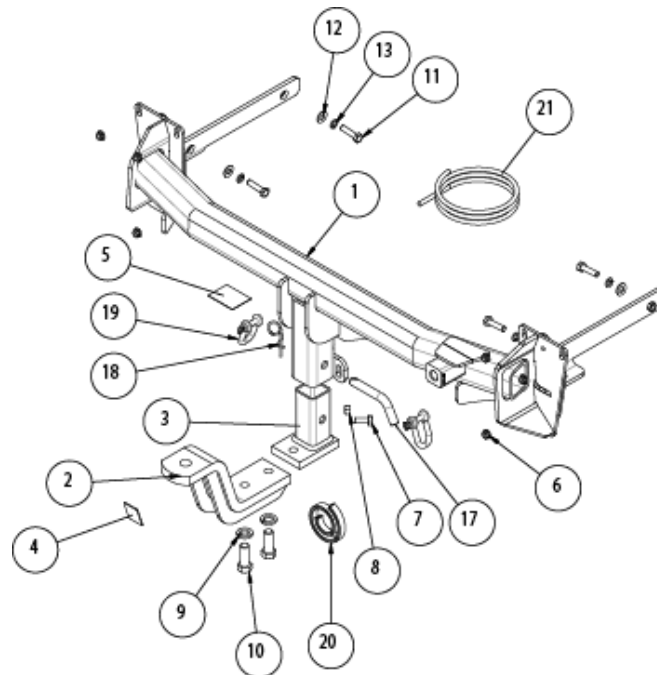
FOR TOWING PURPOSES ONLY

For towing capacity details please refer to vehicle owner's manual or to the manufacturer. Overloading can void your warranties.

HAYMAN REESE
PART No: R2661W
SUZUKI KIZASHI 2010

INSTALLATION INSTRUCTIONS

PLEASE ENSURE THAT INSTRUCTIONS ARE UNDERSTOOD PRIOR TO FITMENT



Items 14, 15 and 16 are not shown in the drawing

Figure 1 – Layout Diagram

| ITEM NO. | DESCRIPTION | QTY. |
|----------|---------------------------------|------|
| 1 | SUZUKI KIZASHI 2010 TOWBAR ASSY | 1 |
| 2 | LUG | 1 |
| 3 | SADDLE ASSY | 1 |
| 4 | HAYMAN REESE LOGO STICKER | 1 |
| 5 | ACRYLIC CP | 1 |
| 6 | M8 WHIZZ NUT | 6 |
| 7 | BOLT M10-1.50 x 25 | 1 |
| 8 | NUT HX M10 - 1.5 Z/P | 1 |
| 9 | M16 X 5 X 3.5 SPRING WASHER | 2 |
| 10 | M16 x 45 2.0P BOLT | 2 |
| 11 | BOLT M10 - 1.5 x 40mm GR 8.8 | 4 |
| 12 | Washer Flat M10 x 23 x 2 z/p | 4 |
| 13 | M10 X 3.5 X 2.2 SPRING WSHR | 4 |
| 14 | FITTING INSTRUCTIONS | 1 |
| 15 | LOAD RATING LABEL | 1 |
| 16 | Warranty Card | 1 |
| 17 | PULL PIN | 1 |
| 18 | SPRING COTTER PIN | 1 |
| 19 | D' SHACKLE | 2 |
| 20 | BUMPER TRIM PINCH WELD 460mm | 1 |
| 21 | WIRING LOOM | 1 |

INSTALLATION INSTRUCTIONS

PLEASE ENSURE THAT INSTRUCTIONS ARE UNDERSTOOD PRIOR TO FITMENT

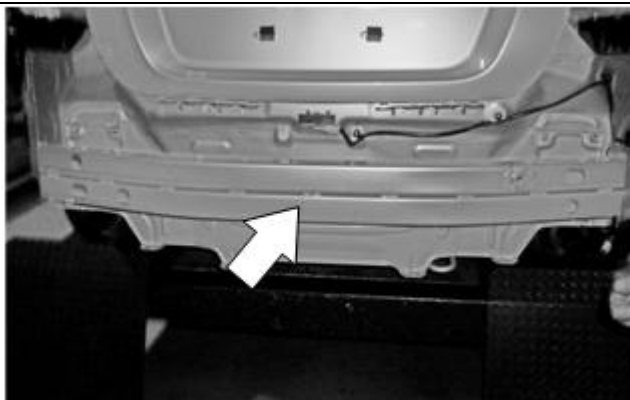


Figure 2 – Remove Bumper Support.

Note: Position the vehicle to a safe working height.

1. Remove the lights and rear bumper. Refer to manufacturer's manual.
2. Remove the bumper support. Refer to Figure 2.

Note: If towbar is to be removed, bumper support should be fitted back.

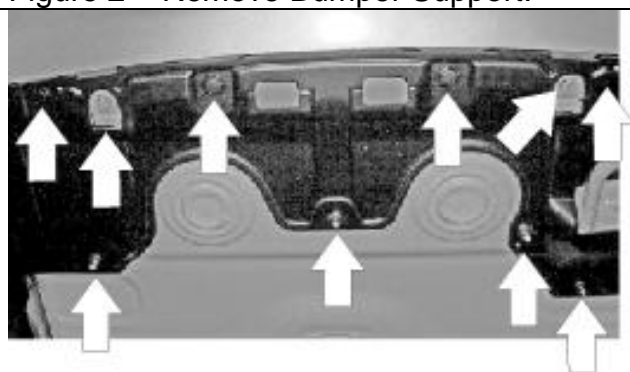


Figure 3 – Remove shroud.

3. Remove the shroud underneath the vehicle by removing nuts x 4, scrivenets x 4 and bolts x 2, as shown in Figure 3.

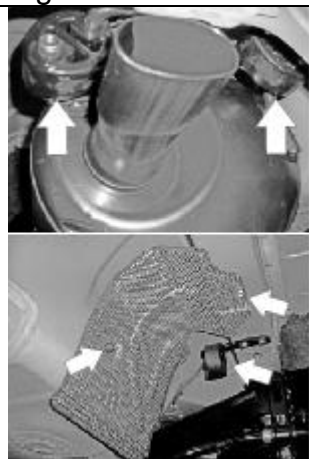


Figure 4 – Remove exhaust rubber mounts and heat shields.

4. Remove the exhaust rubber mounts x 3, as shown in Figure 4.
5. Remove the heat shield by removing bolt x 1 and nut x 1, as shown in Figure 4.

Note: Driver side shown, repeat the step for passenger side.

HAYMAN REESE
PART No: R2661W
SUZUKI KIZASHI 2010

INSTALLATION INSTRUCTIONS

PLEASE ENSURE THAT INSTRUCTIONS ARE UNDERSTOOD PRIOR TO FITMENT

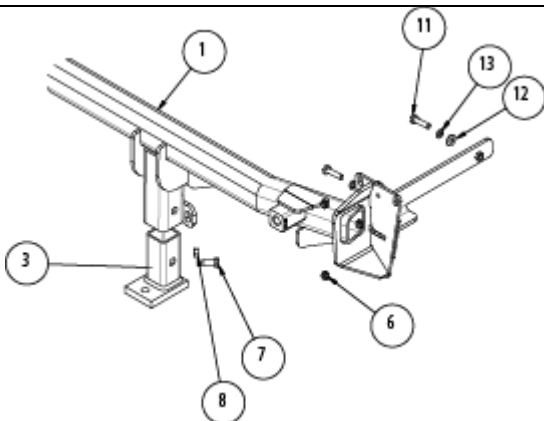


Figure 5 – Fit the towbar assembly.

6. Fit the anti-rattle bolt & nut. Refer to Figure 5.

Note: Fit the bolt only up to the thickness of the hitch box, otherwise it may cause interference with the shank (item 3).

7. Locate the towbar assembly into the chassis rail and fit M8 nuts x 3 (item 6), on the back panel, on both driver and passenger side.
8. Fit M10 bolts, spring washers and flat washers (items 11, 12 and 13) on the chassis rail.

9. Torque the M10 and M8 nuts to the torque requirement mentioned on page 2.
10. Refer to the bumper cut out illustration diagram and shroud cut out illustration diagram to make the cuts.

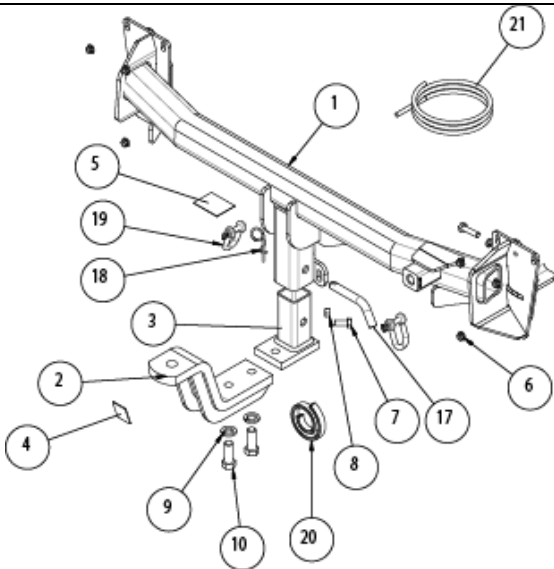


Figure 6 – Fit the loose components.

11. Fit the bumper trim (item 20) on the bumper cut.
12. Refit the heat shields and exhaust rubber mounts back on.
13. Refit the shroud and bumper in the reverse order.
14. Insert the saddle assembly (item 3) and secure it with the pull pin & R Clip (item 17 & 18).
15. Secure the lug assembly via M16 bolts and washers (item 9 & 10). Refer to Figure 6
16. Tighten the anti-rattle nut and bolt (item 7 & 8).
17. Put the D-shackles (item 19) into the chain connection.

INSTALLATION INSTRUCTIONS

PLEASE ENSURE THAT INSTRUCTIONS ARE UNDERSTOOD PRIOR TO FITMENT

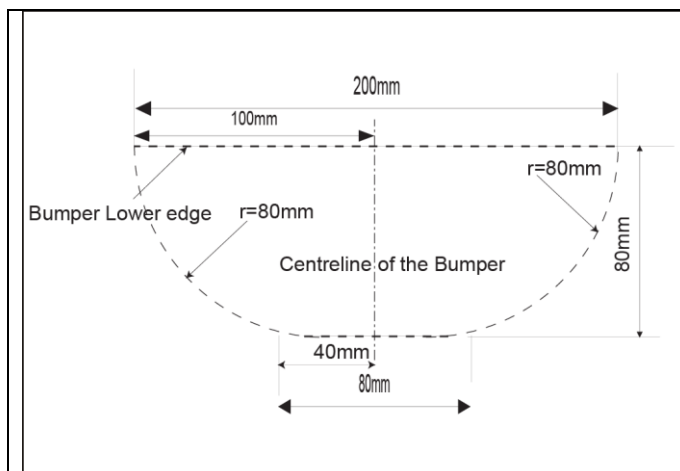


Figure 7 – Bumper Cut out Illustration.

18. Cut the bumper in accordance with the illustration provided in Figure 7.

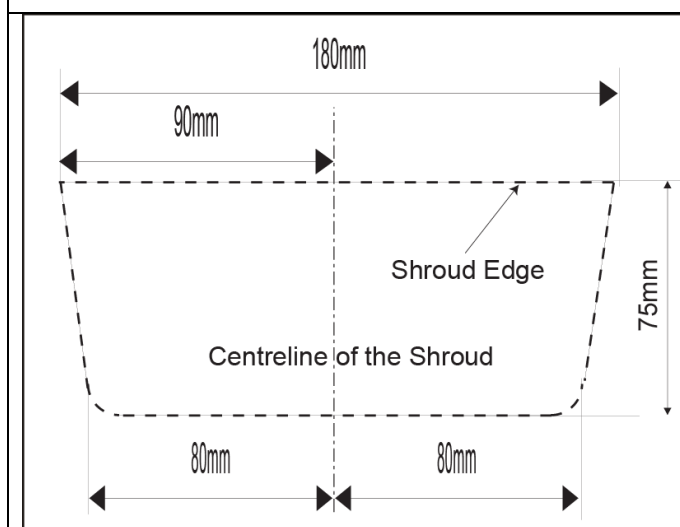


Figure 8 – Shroud cut-out illustration.

19. Cut the shroud in accordance with the illustration, as shown in Figure 8.
20. Affix the load rating label, as shown on page 2.

HAYMAN REESE
PART No: 100255-WL
SUZUKI KIZASHI

INSTALLATION INSTRUCTIONS

PLEASE ENSURE THAT INSTRUCTIONS ARE UNDERSTOOD PRIOR TO FITMENT

Wiring Loom Installation Instructions

SUZUKI KIZASHI
Part No: 100255-WL

Tail Harness Length Required: 1200mm
RPA Override Switch Part No: 04848 (If Fitted)

Wiring Loom Installation Time: Approx 30 Mins

Issue Date 28-05-10

Page 1

Part No: 100255-WL

Hayman Reese (Cequent)
PO Box 4050, Dandenong South VIC 3164
Phone 1800 812 017 Email info@haymanreese.com.au

www.haymanreese.com.au



HAYMAN REESE
PART No: 100255-WL
SUZUKI KIZASHI

INSTALLATION INSTRUCTIONS

PLEASE ENSURE THAT INSTRUCTIONS ARE UNDERSTOOD PRIOR TO FITMENT

1. Remove the rear bumper fascia by removing all of its fasteners first.
2. In the rear luggage compartment area, remove the rear trim (1) and its fasteners.



3. Remove enough fasteners to peel open the LHS and luggage compartment trim (1). Repeat for the RHS.



4. At the rear of the vehicle, drill out a Ø31mm hole from the vehicle (1) where indicated. File down any rough or sharp edges and then spray on rust inhibitor.



Issue Date 28-05-10

Page 2

Part No: 100255-WL

Hayman Reese (Cequent)
PO Box 4050, Dandenong South VIC 3164
Phone 1800 812 017 Email info@haymanreese.com.au

www.haymanreese.com.au

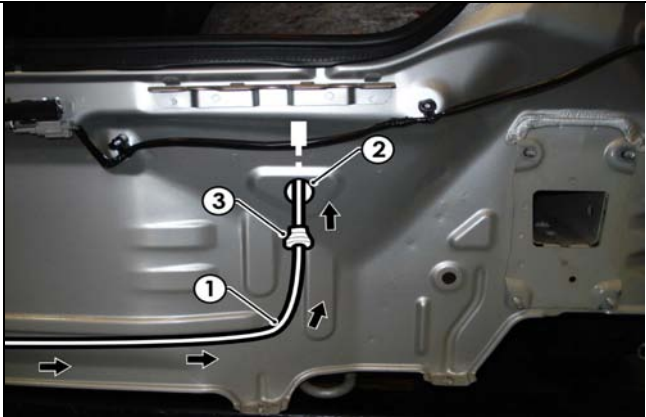


HAYMAN REESE
PART No: 100255-WL
SUZUKI KIZASHI

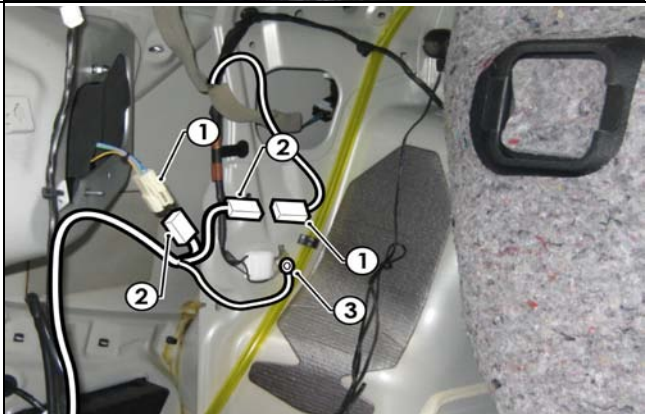
INSTALLATION INSTRUCTIONS

PLEASE ENSURE THAT INSTRUCTIONS ARE UNDERSTOOD PRIOR TO FITMENT

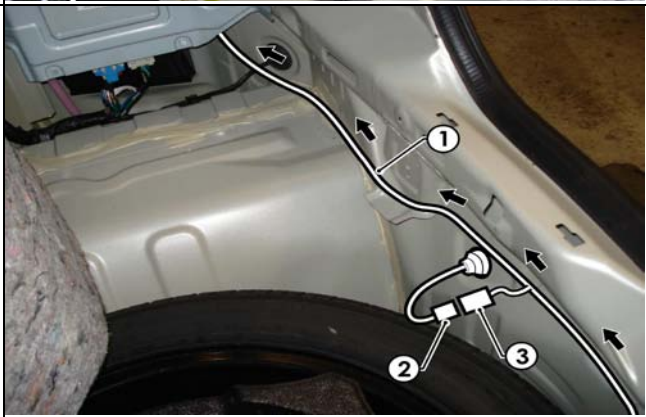
5. Secure the tail harness (tail length 1200mm) trailer socket to the towbar mounting bracket using M4 fasteners (not supplied).
6. Route the tail harness (tail length: 1200mm) (1) into the drilled out hole (2). Ensure the tail grommet (3) is seated correctly into the drilled out hole. Secure the tail harness grommet (3) onto the tail harness using a cable tie (not supplied).



7. In the rear LHS, disconnect the vehicle tail light connectors (1) and then patch the trailer patch harness (P/No: 100255-WL) connectors (2) in between.
8. Secure the trailer patch harness ground ring terminal (3) onto the vehicle grounding point (3) located next to the white connector above the LHS wheel arch area.



9. Route the trailer patch harness (1) along the rear of the vehicle towards the RHS tail light area. Connect the tail harness connector (2) to the trailer patch harness connector (3).



Issue Date 28-05-10

Page 3

Part No: 100255-WL

Hayman Reese (Cequent)
PO Box 4050, Dandenong South VIC 3164
Phone 1800 812 017 Email info@haymanreese.com.au

www.haymanreese.com.au

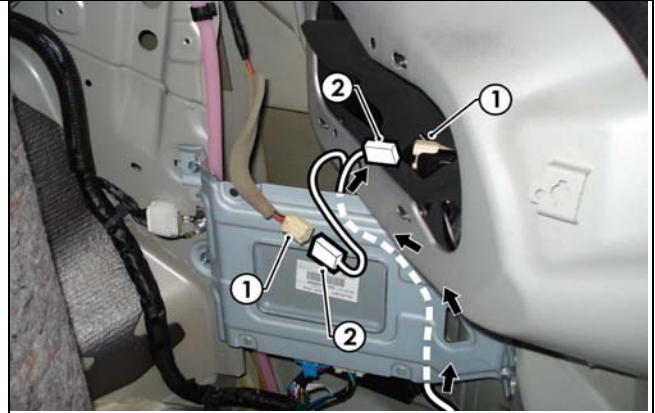


HAYMAN REESE
PART No: 100255-WL
SUZUKI KIZASHI

INSTALLATION INSTRUCTIONS

PLEASE ENSURE THAT INSTRUCTIONS ARE UNDERSTOOD PRIOR TO FITMENT

10. On the RHS, disconnect the tail light connector (1) and patch the trailer patch harness connectors (2) in between.



11. Test the Trailer Harness function using a Light Board or multimeter.
12. Secure the all Harnesses using cables ties (not supplied).
13. Refit all removed parts and secure all fasteners ensuring there are no squeaks or rattles.
14. Place the fitting instructions into the glove compartment after fitment.

Issue Date 28-05-10

Page 4

Part No: 100255-WL

Hayman Reese (Cequent)
PO Box 4050, Dandenong South VIC 3164
Phone 1800 812 017 Email info@haymanreese.com.au

www.haymanreese.com.au

