

HAYMAN REESE
PART No: 02715W
TOYOTA RUKUS 2010 on

INSTALLATION INSTRUCTIONS

PLEASE ENSURE THAT INSTRUCTIONS ARE UNDERSTOOD PRIOR TO FITMENT



Installation Time: Approx 20 Mins

Towbar Installation Instructions
TOYOTA RUKUS 2010

Towbar capacity

Part Number 02715W

Max Towing Braked 500kg
Max Static Ball Load 50kg

Hayman Reese (Cequent)
PO Box 4050, Dandenong South VIC 3164
Phone 1800 812 017 Email info@haymanreese.com.au

HAYMAN REESE

PART No: 02715W

TOYOTA RUKUS 2010

INSTALLATION INSTRUCTIONS

PLEASE ENSURE THAT INSTRUCTIONS ARE UNDERSTOOD PRIOR TO FITMENT

Warning:

1. Do not, drill, cut, weld or otherwise modify the towbar.
2. If you are using electric welding on a motor vehicle, **always** check that the vehicle is not equipped with electronic engine or instrument management equipment. Failure to do so could **destroy** any onboard computers. If in doubt, check with the vehicle's manufacturer.
1. **General:** Ensure all hardware items have been included refer to assembly diagram.
2. It is recommended that the instructions are read through and completely understood before making any attempt to fit this product.
3. Be wary of any changes to vehicle designs or other accessories that may conflict with the installation of this product.
4. Before drilling ensure that the area is clear of fuel, electrical & other components.
5. All holes drilled into the body panels shall have all burrs & swarf removed then coated with a suitable rust preventative paint.
6. The high tensile fasteners supplied with this product were used to achieve the specified rating. If replacement is required ensure that fasteners of the same rating & quality are used. Contact an authorised **Hayman Reese** dealer if further information is required.
7. Ensure that all hardware is fastened to torque list below check fasteners on regular basis.
8. Towbar load rating sticker provided with this product shall be conspicuously located on inside rear end of the driver's door. **(See diagram below).**
9. Hayman Reese recommends that you check your tow ball to ensure that it complies with the Australian standards **AS 4177.2**.
10. **PLEASE NOTE:** It is advised to remove your lug or tbm when not actually towing so as to produce a clear view of the vehicles registration plate if obscured, and to also provide maximum available departure angle.

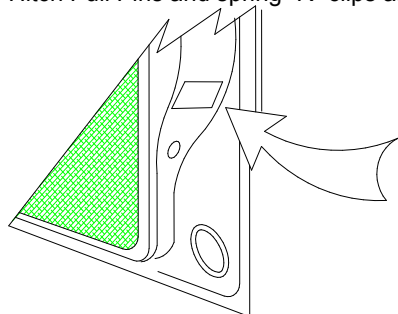
Tow bar Maintenance and Care.

Hayman Reese recommends that bolt torque's, as listed below, are routinely and regularly inspected and checked for correct tension. Replace any worn or defective parts.

We recommended to remove Tow Ball Mounts (TBM's, tongues or lugs) when not being used for any considerable length of time.

So as to avoid injury, when not towing it is suggested that the tongue, Pull Pin and R-clip are removed then stored in a safe, clean and dry place, away from excessive moisture.

Hitch Pull Pins and spring "R" clips are regularly checked for proper installation. Replace any worn or defective parts.



Place load rating sticker
inside driver's door here

RECOMMENDED ASSEMBLY TORQUE LISTING

Diameter Grade 8.8 Bolt

M6	9.5 Nm
M8	21.7 Nm
M10	43.4 Nm
M12	77.3 Nm
M14	146 Nm
M16	189.8 Nm

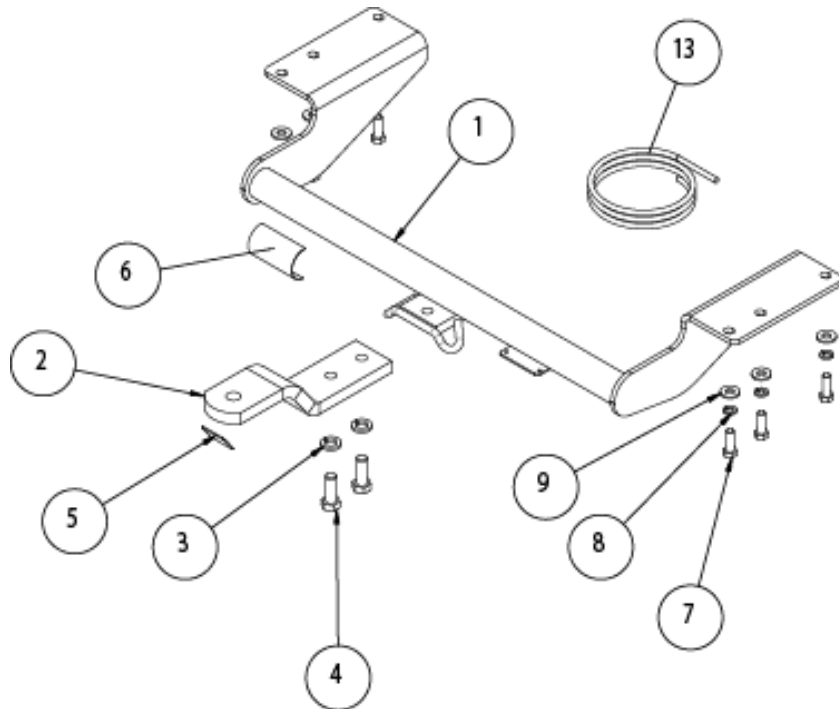
FOR TOWING PURPOSES ONLY

For towing capacity details please refer to vehicle owner's manual or to the manufacturer. Overloading can void your warranties.

HAYMAN REESE
PART No: 02715W
TOYOTA RUKUS 2010

INSTALLATION INSTRUCTIONS

PLEASE ENSURE THAT INSTRUCTIONS ARE UNDERSTOOD PRIOR TO FITMENT



Items 10, 11 and 12 are not shown in the drawing

Figure 1 – Layout Diagram

ITEM NO.	DESCRIPTION	QTY.
1	WELDED ASSY TOYOTA RUKUS 2010	1
2	LUG 75 X 20	1
3	M16 X 5 X 3.5 SPRING WASHER	2
4	M16 x 45 2.0P BOLT	2
5	HAYMAN REESE LOGO STICKER	1
6	COMPLIANCE PLATE	1
7	BOLT M12-1.25x35 GR 8.8	6
8	M12 X 4.0 X 2.5 SPRING WASHER	6
9	WASHER M12x28.8x3mm	6
10	FITTING INSTRUCTIONS	1
11	LOAD RATING LABEL	1
12	Warranty Card	1
13	WIRING LOOM	1

HAYMAN REESE

PART No: 02715W

TOYOTA RUKUS 2010

INSTALLATION INSTRUCTIONS

PLEASE ENSURE THAT INSTRUCTIONS ARE UNDERSTOOD PRIOR TO FITMENT

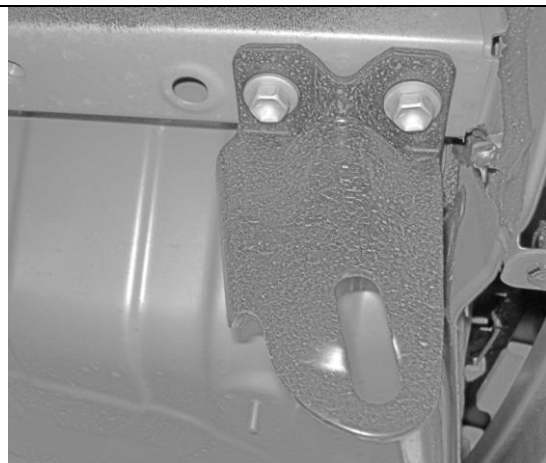


Figure 2 – Remove shipping hook.

Note: Position the vehicle to a safe working height.

1. Remove the shipping hook from the passenger side. Refer to Figure 2.

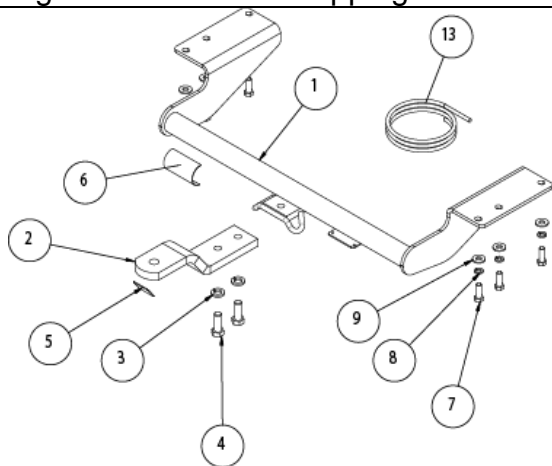


Figure 3 – Locate the towbar on the vehicle.

2. Locate the towbar on the vehicle, and used the relevant fasteners, as shown in Figure 3.
3. Torque the bolts to the torque requirement mentioned on page 2.
4. Affix the load rating, as shown on page 2.

HAYMAN REESE
PART No: 100440-WL
TOYOTA RUKUS

INSTALLATION INSTRUCTIONS

PLEASE ENSURE THAT INSTRUCTIONS ARE UNDERSTOOD PRIOR TO FITMENT

Wiring Loom Installation Instructions

Toyota Rukus
Part No: 100440-WL

Tail Harness Length Required: 1200mm
ECU Required Part No: 04826
RPA Override Switch Part No: 04848 (if fitted)

Wiring Loom Installation Time: Approx 40 Mins

Issue Date 09-08-10

Page 1

Part No: 100440-WL

Hayman Reese (Cequent)
PO Box 4050, Dandenong South VIC 3164
Phone 1800 812 017 Email info@haymanreese.com.au

www.haymanreese.com.au

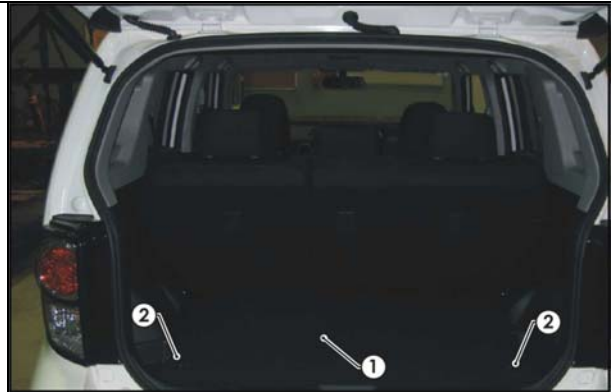


HAYMAN REESE
PART No: 100440-WL
TOYOTA RUKUS

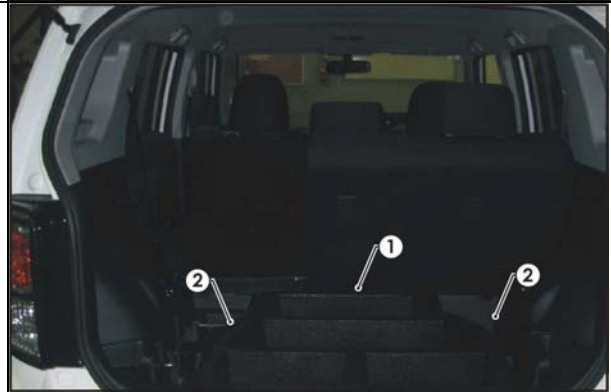
INSTALLATION INSTRUCTIONS

PLEASE ENSURE THAT INSTRUCTIONS ARE UNDERSTOOD PRIOR TO FITMENT

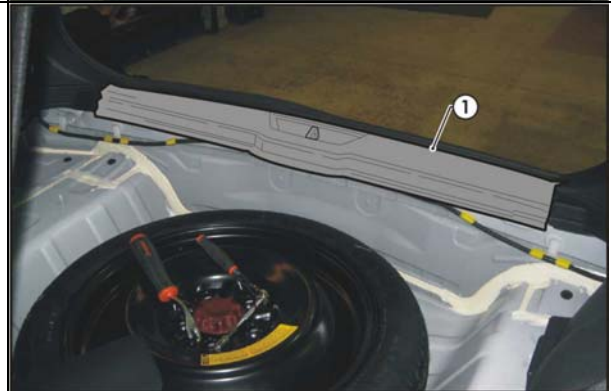
1. Remove the luggage compartment floor cover (1) by releasing the two locks (2).



2. Fold the rear seats forward by pressing the button on top.
3. Remove the luggage compartment storage tray (1).
4. Remove the fasteners from the LHS and RHS tool trays (2).
5. Remove the LHS& RHS tool trays (2).



6. Remove the luggage compartment rear trim (1).



Issue Date 09-08-10

Page 2

Part No: 100440-WL

Hayman Reese (Cequent)
PO Box 4050, Dandenong South VIC 3164
Phone 1800 812 017 Email info@haymanreese.com.au

www.haymanreese.com.au



HAYMAN REESE
PART No: 100440-WL
TOYOTA RUKUS

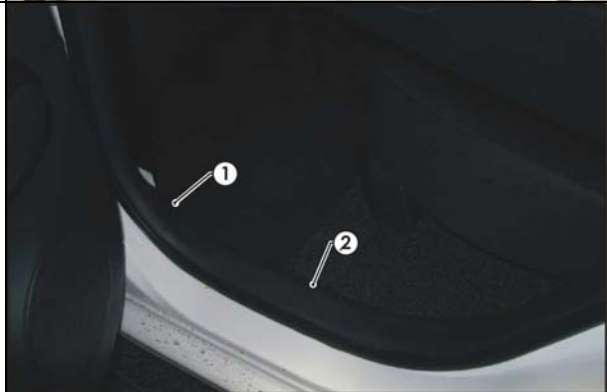
INSTALLATION INSTRUCTIONS

PLEASE ENSURE THAT INSTRUCTIONS ARE UNDERSTOOD PRIOR TO FITMENT

7. At the RHS rear quarter corner of the vehicle drill out the vehicle opening (1) to Ø31mm.
8. File down any rough or sharp edges and spray on rust inhibitor.



9. Remove the LHS 'B' pillar lower trim (1).
10. Remove the LHS rear passenger door sill trim (2).



11. Remove the LHS kick panel and passenger door sill trim (2).



Issue Date 09-08-10

Page 3

Part No: 100440-WL

Hayman Reese (Cequent)
PO Box 4050, Dandenong South VIC 3164
Phone 1800 812 017 Email info@haymanreese.com.au

www.haymanreese.com.au



HAYMAN REESE
PART No: 100440-WL
TOYOTA RUKUS

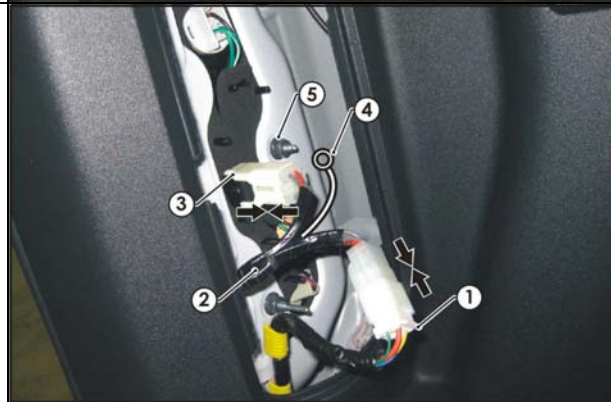
INSTALLATION INSTRUCTIONS

PLEASE ENSURE THAT INSTRUCTIONS ARE UNDERSTOOD PRIOR TO FITMENT

12. In the front passenger cabin open and remove the glove compartment (1) by unclipping the glove compartment damper (2).



13. At the rear of the vehicle remove the LHS tail light connector access panel cover.
14. Disconnect the LHS tail light connector (1) from the tail light assembly (3).
15. Connect LHS tail light connector to the trailer harness (P/No:100440-WL) (2) mating connector.
16. Connect the trailer harness (2) connector into the tail light assembly (3).
17. Connect the trailer harness ground ring terminal (4) to the existing vehicle bolt (5).



18. Route the trailer harness across the rear of the luggage compartment towards the RHS of the vehicle and underneath the RHS trim.
19. Remove the RHS access panel cover.
20. Disconnect the RHS tail light connector (1) from the tail light assembly (3).
21. Connect RHS tail light connector to the trailer harness (2) mating connector.
Connect the trailer harness (2) connector into the tail light assembly (3).



Issue Date 09-08-10

Page 4

Part No: 100440-WL

Hayman Reese (Cequent)
PO Box 4050, Dandenong South VIC 3164
Phone 1800 812 017 Email info@haymanreese.com.au

www.haymanreese.com.au

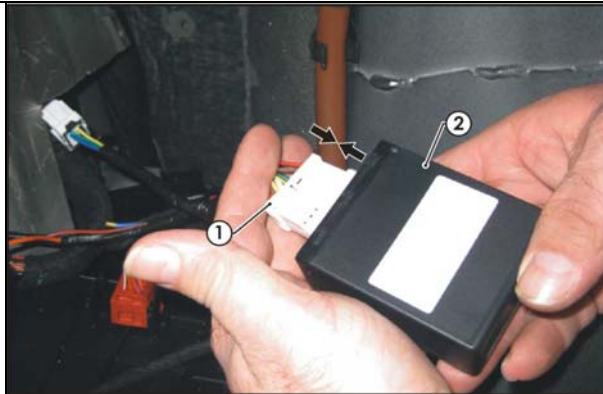


HAYMAN REESE
PART No: 100440-WL
TOYOTA RUKUS

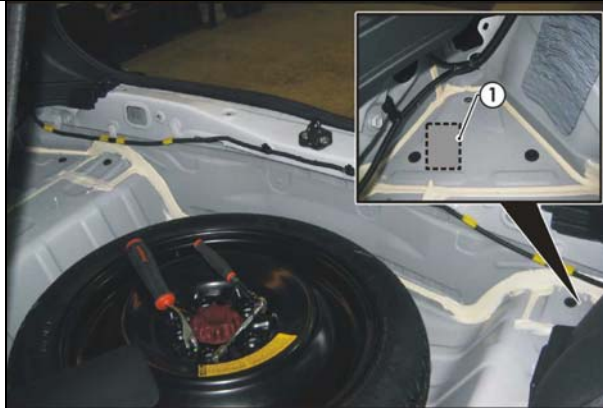
INSTALLATION INSTRUCTIONS

PLEASE ENSURE THAT INSTRUCTIONS ARE UNDERSTOOD PRIOR TO FITMENT

22. Connect the 12-way trailer harness connector (1) to the ECU (2).



23. In the RHS rear quarter of the luggage compartment apply double sided tape to the ECU and adhere the ECU to the vehicle sheet metal in the highlighted area (1).



24. Route the trailer harness (1) along the LHS of the vehicle following the vehicle harness past the LHS 'B' pillar and towards the front of the vehicle.



Issue Date 09-08-10

Page 5

Part No: 100440-WL

Hayman Reese (Cequent)
PO Box 4050, Dandenong South VIC 3164
Phone 1800 812 017 Email info@haymanreese.com.au

www.haymanreese.com.au



HAYMAN REESE
PART No: 100440-WL
TOYOTA RUKUS

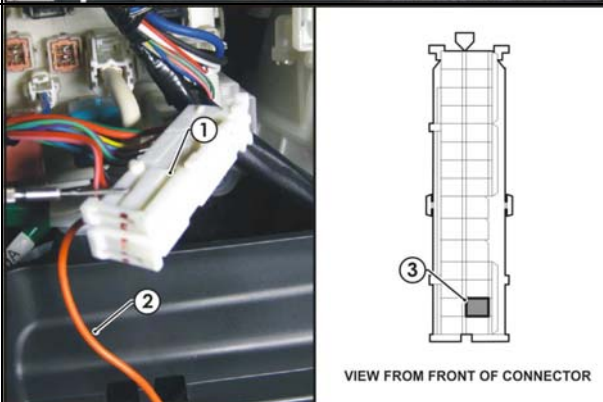
INSTALLATION INSTRUCTIONS

PLEASE ENSURE THAT INSTRUCTIONS ARE UNDERSTOOD PRIOR TO FITMENT

25. In the glove box area route the trailer harness power wire (1) into the glove compartment cavity.
26. Remove the vehicle connector (2) by lifting the black lever.
27. Unclip the black release lever from the connector block.



28. Open the connector secondary lock (1) using a small jewellers flat screwdriver.
29. Insert the trailer harness orange power wire (2) into the connector PIN 17 location (3).



30. Route the tail harness (1) (tail length 1200mm) through the grommet hole and mount the trailer socket (2) to the towbar mounting plate using M4 fasteners (not supplied).
31. Ensure the tail harness grommet is seated correctly. Secure it in place using a cable tie (not supplied).



Issue Date 09-08-10

Page 6

Part No: 100440-WL

Hayman Reese (Cequent)
PO Box 4050, Dandenong South VIC 3164
Phone 1800 812 017 Email info@haymanreese.com.au

www.haymanreese.com.au

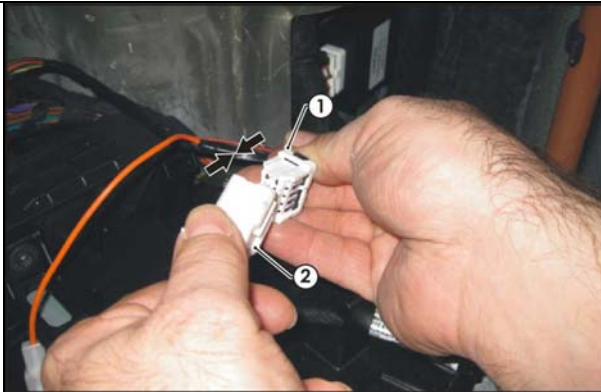


HAYMAN REESE
PART No: 100440-WL
TOYOTA RUKUS

INSTALLATION INSTRUCTIONS

PLEASE ENSURE THAT INSTRUCTIONS ARE UNDERSTOOD PRIOR TO FITMENT

32. Inside the vehicle connect the tail harness 8-way connector (1) to the trailer harness mating 8-way connector (2).



33. Test the trailer harness function using a light board or multimeter.
34. Secure all harnesses using cable ties (not supplied).
35. Refit all removed parts and secure all fasteners, ensuring there are no squeaks or rattles.
36. Place instructions in glove box after fitment.

Issue Date 09-08-10

Page 7

Part No: 100440-WL

Hayman Reese (Cequent)
PO Box 4050, Dandenong South VIC 3164
Phone 1800 812 017 Email info@haymanreese.com.au

www.haymanreese.com.au

