

**HAYMAN REESE**

**PART No: 02716W**

**HYUNDAI i20 2010 (1.4L & 1.6L)**

## **INSTALLATION INSTRUCTIONS**

PLEASE ENSURE THAT INSTRUCTIONS ARE UNDERSTOOD PRIOR TO FITMENT



**Installation Time: Approx 60 Mins**

**Towbar Installation Instructions**  
**HYUNDAI i20 2010 (1.4L & 1.6L)**

**Towbar capacity**

**Part Number 02716W**

**Max Towing Braked 1100kg**  
**Max Static Ball Load 50kg**

Hayman Reese (Cequent)  
PO Box 4050, Dandenong South VIC 3164  
Phone 1800 812 017 Email [info@haymanreese.com.au](mailto:info@haymanreese.com.au)

# HAYMAN REESE

PART No: 02716W

HYUNDAI i20 2010 (1.4L & 1.6L)

## INSTALLATION INSTRUCTIONS

PLEASE ENSURE THAT INSTRUCTIONS ARE UNDERSTOOD PRIOR TO FITMENT

### Warning:

1. Do not, drill, cut, weld or otherwise modify the towbar.
2. If you are using electric welding on a motor vehicle, **always** check that the vehicle is not equipped with electronic engine or instrument management equipment. Failure to do so could **destroy** any onboard computers. If in doubt, check with the vehicle's manufacturer.
1. **General:** Ensure all hardware items have been included refer to assembly diagram.
2. It is recommended that the instructions are read through and completely understood before making any attempt to fit this product.
3. Be wary of any changes to vehicle designs or other accessories that may conflict with the installation of this product.
4. Before drilling ensure that the area is clear of fuel, electrical & other components.
5. All holes drilled into the body panels shall have all burrs & swarf removed then coated with a suitable rust preventative paint.
6. The high tensile fasteners supplied with this product were used to achieve the specified rating. If replacement is required ensure that fasteners of the same rating & quality are used. Contact an authorised **Hayman Reese** dealer if further information is required.
7. Ensure that all hardware is fastened to torque list below check fasteners on regular basis.
8. Towbar load rating sticker provided with this product shall be conspicuously located on inside rear end of the driver's door. **(See diagram below).**
9. Hayman Reese recommends that you check your tow ball to ensure that it complies with the Australian standards **AS 4177.2**.
10. **PLEASE NOTE:** It is advised to remove your lug or tbm when not actually towing so as to produce a clear view of the vehicles registration plate if obscured, and to also provide maximum available departure angle.

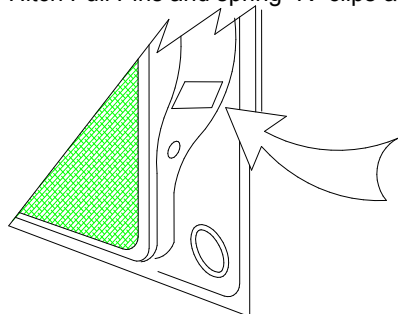
### Tow bar Maintenance and Care.

Hayman Reese recommends that bolt torque's, as listed below, are routinely and regularly inspected and checked for correct tension. Replace any worn or defective parts.

We recommended to remove Tow Ball Mounts (TBM's, tongues or lugs) when not being used for any considerable length of time.

So as to avoid injury, when not towing it is suggested that the tongue, Pull Pin and R-clip are removed then stored in a safe, clean and dry place, away from excessive moisture.

Hitch Pull Pins and spring "R" clips are regularly checked for proper installation. Replace any worn or defective parts.



Place load rating sticker  
inside driver's door here

### **RECOMMENDED ASSEMBLY TORQUE LISTING**

#### Diameter Grade 8.8 Bolt

M6	9.5 Nm
M8	21.7 Nm
M10	43.4 Nm
M12	77.3 Nm
M14	146 Nm
M16	189.8 Nm

### **FOR TOWING PURPOSES ONLY**

For towing capacity details please refer to vehicle owner's manual or to the manufacturer. Overloading can void your warranties.

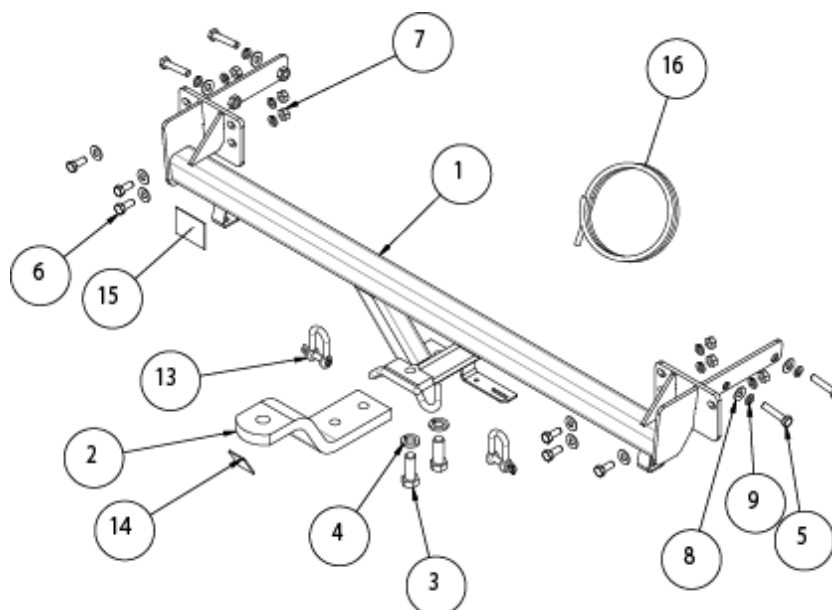
# HAYMAN REESE

PART No: 02716W

HYUNDAI i20 2010 (1.4L & 1.6L)

## INSTALLATION INSTRUCTIONS

PLEASE ENSURE THAT INSTRUCTIONS ARE UNDERSTOOD PRIOR TO FITMENT



Items 10, 11 and 12 are not shown in the drawing

Figure 1 – Layout Diagram

ITEM NO.	DESCRIPTION	QTY.
1	WELDED ASSY HYUNDAI i20 2010	1
2	ASSEMBLY LUG	1
3	M16 x 45 2.0P BOLT	2
4	M16 X 5 X 3.5 SPRING WASHER	2
5	Bolt M10 x 1.5 x 50 GR 8.8 Z/P	4
6	BOLT M10-1.50 x 25	6
7	NUT HX M10 - 1.5 Z/P	6
8	Washer Flat M10 x 23 x 2 z/p	10
9	M10 X 3.5 X 2.2 SPRING WSHR	10
10	FITTING INSTRUCTIONS	1
11	LOAD RATING LABEL	1
12	Warranty Card	1
13	D' SHACKLE	2
14	HAYMAN REESE LOGO STICKER	1
15	ACRYLIC CP	1
16	WIRING LOOM	1

## HAYMAN REESE

PART No: 02716W

HYUNDAI i20 2010 (1.4L & 1.6L)

### INSTALLATION INSTRUCTIONS

PLEASE ENSURE THAT INSTRUCTIONS ARE UNDERSTOOD PRIOR TO FITMENT



Figure 2 – Remove scrivets from underneath the bumper.

Note: Position the vehicle to a safe working height.

1. Remove scrivets from underneath the vehicle:
  - 3 from the centre.
  - 3 from right hand side.
  - 3 from left hand side.

Refer to Figure 2.

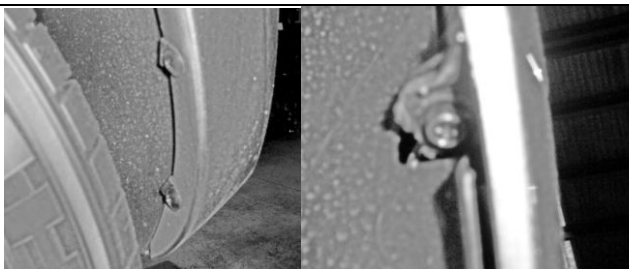


Figure 3 – Remove scrivets and screws from the sides.

2. Remove scrivets x 2 and screw x 1 from the side wheel arch.

Refer to Figure 3.

Note: Passenger side shown, repeat the step for driver side.

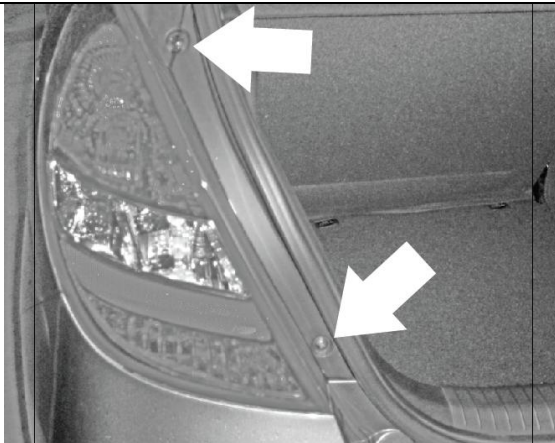


Figure 4 – Remove light.

3. Remove screws x 2 and remove the light.

Refer to Figure 4.

Note: Detach bulbs x 4 before removing the light.

Note: Passenger side shown, repeat the step for driver side.

## HAYMAN REESE

PART No: 02716W

HYUNDAI i20 2010 (1.4L & 1.6L)

### INSTALLATION INSTRUCTIONS

PLEASE ENSURE THAT INSTRUCTIONS ARE UNDERSTOOD PRIOR TO FITMENT

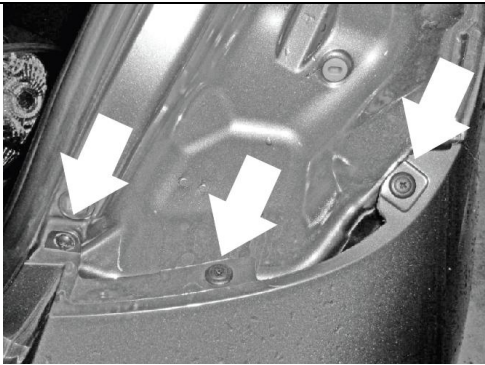


Figure 5 – Remove screw and scrivenets inside the lights.

4. Remove scrivenets x 2, and screw x 1 from inside the light.

Refer to Figure 5.

Note: Passenger side shown, repeat the step for driver side.

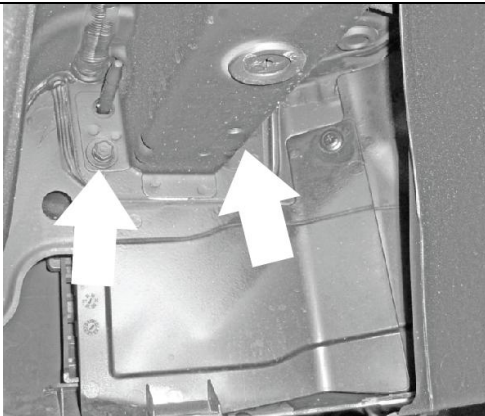


Figure 6 – Remove the impact beam bolts.

5. Remove bolts x 2 holding the impact beam from inside, next to the chassis rail.

Refer to Figure 6.

Note: Driver side shown, repeat the step for passenger side.

6. Flex the bumper out, and remove carefully.

Note: Impact beam bolts are removed, so that the impact beam comes out with the bumper.



Figure 7 – Remove the impact beam.

7. Remove the scrivenets x 2 from top and bottom tabs, to remove the impact beam, with the tabs.

Note: Repeat the step on the other side.

Note: Use scrivenets x 2 in the additional tabs provided on the towbar to hold the bumper.

## HAYMAN REESE

PART No: 02716W

HYUNDAI i20 2010 (1.4L & 1.6L)

### INSTALLATION INSTRUCTIONS

PLEASE ENSURE THAT INSTRUCTIONS ARE UNDERSTOOD PRIOR TO FITMENT

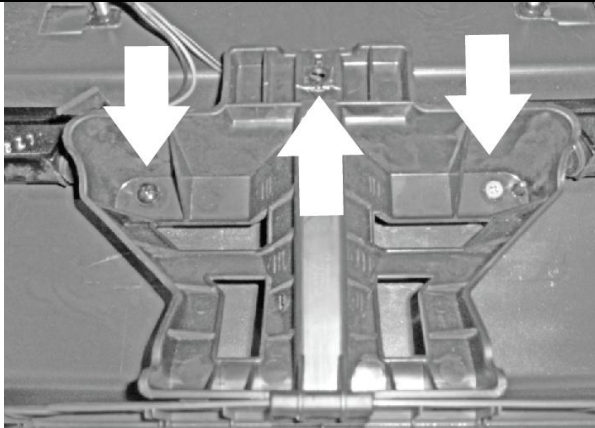


Figure 8 – Remove shipping hook.

8. In the centre tab, remove the centre scrivet to release the impact beam, but let the other 2 screws stay to hold the tab, to give rigidity to the bumper.  
Refer to Figure 8.

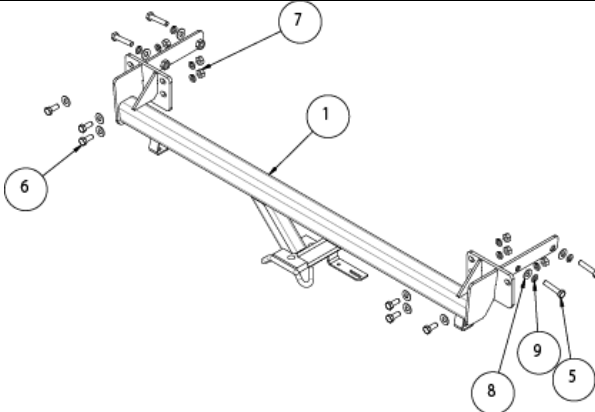


Figure 9 – Locate the towbar on the vehicle.

9. Locate the towbar on the vehicle. Locate the chassis rail holes and fit loosely M10 bolts (50mm) x 2, spring washers x 2 and flat washers x 2 (item 5, 9 & 8) on both driver side and passenger side.
10. Fit M10 bolts (25mm) x 3, flat washers x 3, spring washers x 3 and M10 nut x 3, on the back panel.  
Refer to Figure 9.

11. Torque the bolts to the torque requirements as shown on page 2.
12. Fit the bumper back in reverse order.
13. Additional tabs x 2 have been provided on the towbar on the both sides to put a scrivet through to hold the bumper.
14. Fit the lights in the reverse order.
15. Affix the load rating label, as shown on page 2.

**HAYMAN REESE**  
**PART No: 100464-WL**  
**HYUNDAI i20**

## **INSTALLATION INSTRUCTIONS**

PLEASE ENSURE THAT INSTRUCTIONS ARE UNDERSTOOD PRIOR TO FITMENT

### **Wiring Loom Installation Instructions**

**HYUNDAI i20**  
**Part No: 100464-WL**

**Tail Harness Length Required: 1200mm**  
**RPA Override Switch Part No: 04848 (If Fitted)**

**Wiring Loom Installation Time: Approx 20 Mins**

Issue Date 13-08-10

Page 1

Part No: 100464-WL

Hayman Reese (Cequent)  
PO Box 4050, Dandenong South VIC 3164  
Phone 1800 812 017 Email [info@haymanreese.com.au](mailto:info@haymanreese.com.au)

[www.haymanreese.com.au](http://www.haymanreese.com.au)



**HAYMAN REESE**  
**PART No: 100464-WL**  
**HYUNDAI i20**

**INSTALLATION INSTRUCTIONS**

**PLEASE ENSURE THAT INSTRUCTIONS ARE UNDERSTOOD PRIOR TO FITMENT**

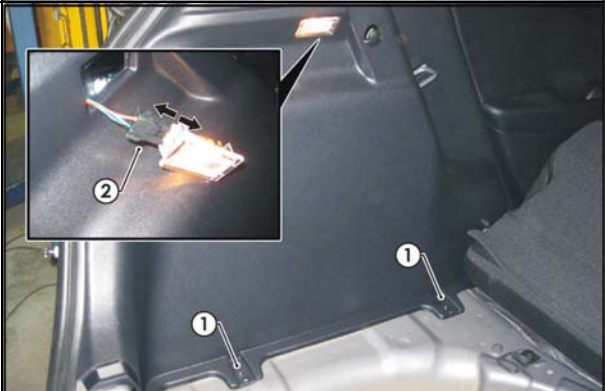
1. In the luggage compartment, remove the parcel shelf (1).
2. Fold the rear seats (2) forward.



3. Remove the rear trim (1) by first removing the two clips (2).



4. On the LHS side trim, remove the two Philips head screws (1).
5. Repeat step for RHS.
6. Dislodge the light and disconnect the light connector (2).



Issue Date 13-08-10

Page 2

Part No: 100464-WL

Hayman Reese (Cequent)  
PO Box 4050, Dandenong South VIC 3164  
Phone 1800 812 017 Email [info@haymanreese.com.au](mailto:info@haymanreese.com.au)

[www.haymanreese.com.au](http://www.haymanreese.com.au)





**HAYMAN REESE**  
**PART No: 100464-WL**  
**HYUNDAI i20**

**INSTALLATION INSTRUCTIONS**

**PLEASE ENSURE THAT INSTRUCTIONS ARE UNDERSTOOD PRIOR TO FITMENT**

7. In the LHS rear quarter corner, remove the vehicle grommet (1) and drill out the hole to Ø31mm.
8. File any rough or sharp edges and spray on rust inhibitor.



9. Dislodge the LHS side trim enough to expose the LHS tail light connectors.
10. Disconnect tail light connectors.
11. Connect the tail light assembly connector (1) to the trailer harness (P/No: 100464-WL) (2) patch connector.
12. Connect the tail light connector (3) to the trailer harness (2) patch connector.



13. Route the trailer harness across the rear of the luggage compartment toward the RHS of the vehicle.
14. Dislodge the RHS side trim enough to expose the RHS tail light connectors.
15. Disconnect tail light connectors.
16. Connect the tail light assembly connector (1) to the trailer harness (2) patch connector.
17. Connect the tail light connector (3) to the trailer harness (2) patch connector.



Issue Date 13-08-10

Page 3

Part No: 100464-WL

Hayman Reese (Cequent)  
PO Box 4050, Dandenong South VIC 3164  
Phone 1800 812 017 Email [info@haymanreese.com.au](mailto:info@haymanreese.com.au)

[www.haymanreese.com.au](http://www.haymanreese.com.au)

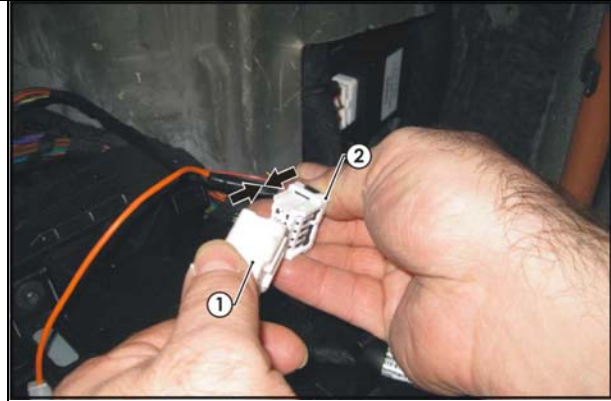


**HAYMAN REESE**  
**PART No: 100464-WL**  
**HYUNDAI i20**

**INSTALLATION INSTRUCTIONS**

**PLEASE ENSURE THAT INSTRUCTIONS ARE UNDERSTOOD PRIOR TO FITMENT**

18. From the outside of the vehicle, mount the trailer socket on the towbar mounting bracket using M4 fasteners (not supplied).
19. Route the tail harness (tail length 1200mm) across the towbar towards the RHS of the vehicle and up through the previously drilled out grommet hole.
20. In the luggage compartment, connect the tail harness 8-way connector to the trailer harness mating 8-way connector.



21. Test the Trailer Harness function using a Light Board or multimeter.
22. Secure all Harnesses using cables ties (not supplied).
23. Re-fit all removed parts and secure all fasteners, ensuring there are no squeaks or rattles.
24. Place instructions in glove box after fitment.

Issue Date 13-08-10

Page 4

Part No: 100464-WL

Hayman Reese (Cequent)  
PO Box 4050, Dandenong South VIC 3164  
Phone 1800 812 017 Email [info@haymanreese.com.au](mailto:info@haymanreese.com.au)

[www.haymanreese.com.au](http://www.haymanreese.com.au)

