

HAYMAN REESE
PART No: **02824W**
CHERY J11 4WD 2010 - ON

INSTALLATION INSTRUCTIONS

PLEASE ENSURE THAT INSTRUCTIONS ARE UNDERSTOOD PRIOR TO FITMENT



Installation Time: Approx 30 Mins

Towbar Installation Instructions
CHERY J11 4WD 2010 - ON

Towbar capacity

Part Number 02824W

Max Towing Braked 900 kg
Max Static Ball Load 90 kg

Hayman Reese (Cequent)
PO Box 4050, Dandenong South VIC 3164
Phone 1800 812 017 Email info@haymanreese.com.au

HAYMAN REESE
PART No: 02824W
CHERY J11 4WD 2010 - ON

INSTALLATION INSTRUCTIONS

PLEASE ENSURE THAT INSTRUCTIONS ARE UNDERSTOOD PRIOR TO FITMENT

PLEASE READ INSTRUCTIONS THROUGH BEFORE YOU BEGIN

INSTALLATION INSTRUCTIONS

WARNING:

Do not, drill, cut weld or otherwise modify the towbar.

If you are using electric welding on a motor vehicle, **always** check that the vehicle is not equipped with electronic engine or instrument management equipment. Failure to do so could **destroy** any onboard computers. If in doubt, check with the vehicle's manufacturer.

1. Ensure all hardware items have been included.
2. Remove and discard shipping hook and bolts from passenger side.
3. Lift towbar up into position. Insert loose plate in between towbar and chassis, fit two M12x40 bolts 1.75 pitch, & two M12x40 bolt with wire, spring washers and flat washers as per diagram.
4. Tighten all bolts to torque listing below.
5. Refer to diagram for correct positioning of lug, (lug to be facing downwards).
6. Towbar rating sticker to be conspicuously located on inside rear end of the driver's door. (see diagram below)

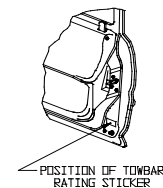
NOTE: Please discard the M12x1.25P bolt from Bolt Bag its to be used for different Version.

RECOMMENDED ASSEMBLY TORQUE LISTING

<u>Diameter</u>	<u>Grade 8.8 Bolt</u>
	<u>Nm</u>
M6	9.5
M8	21.7
M10	43.4
M12	77.3
M16	189.8

FOR TOWING PURPOSES ONLY

For towing capacity details please refer to vehicle owner's manual or to the manufacturer. Overloading can void your warranties.



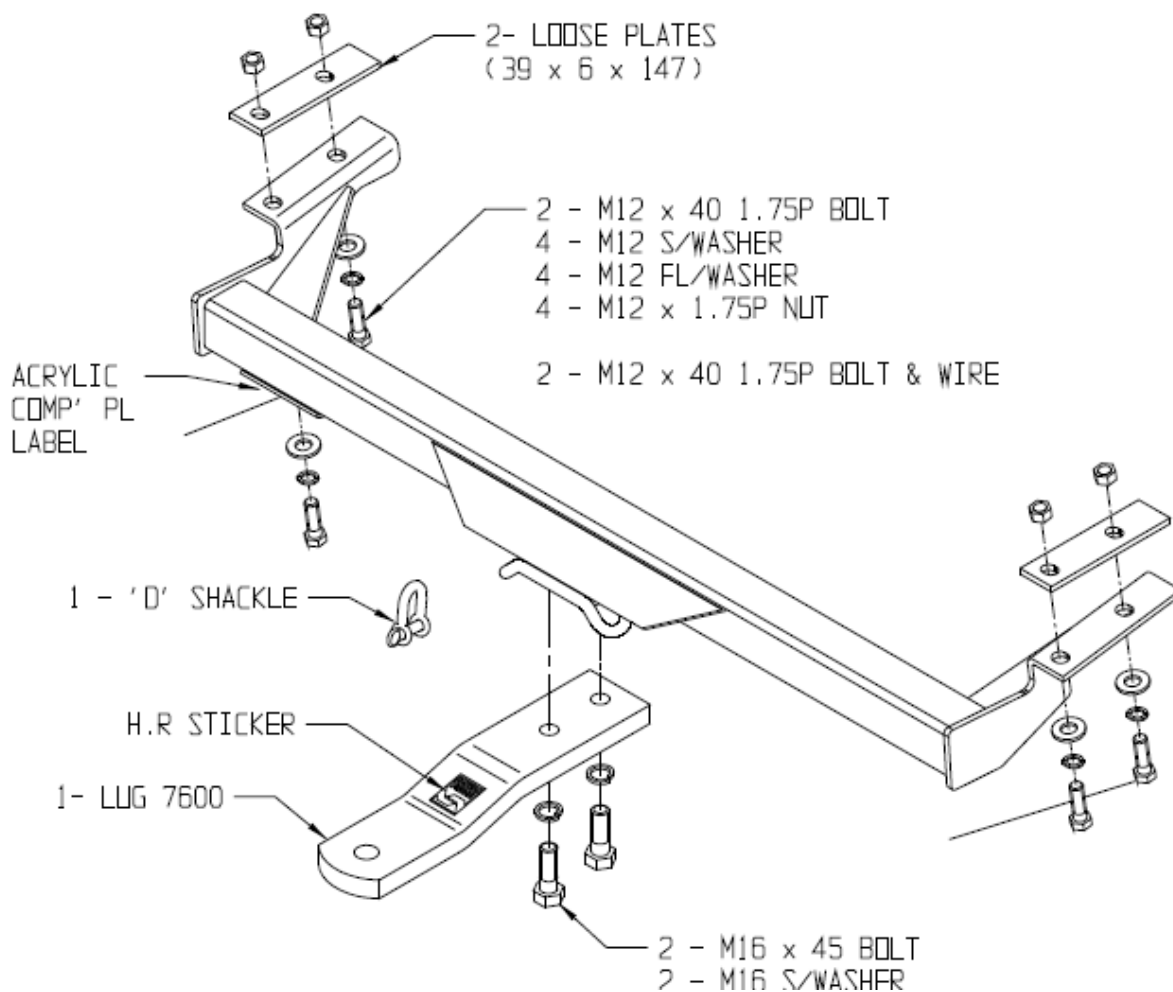
HAYMAN REESE
PART No: 02824W
CHERY J11 4WD 2010 - ON

INSTALLATION INSTRUCTIONS

PLEASE ENSURE THAT INSTRUCTIONS ARE UNDERSTOOD PRIOR TO FITMENT

NOTE: Hayman Reese recommends that you check your towball to ensure it complies with the Australian standard AS 4177.2.

PLEASE NOTE: It is advised to remove lug from tow bar when not actually towing so as to produce a clear view of the vehicles registration plate if obscured, and to also provide increased departure angle



HAYMAN REESE
PART No: 100472-WL
CHERY J11

INSTALLATION INSTRUCTIONS

PLEASE ENSURE THAT INSTRUCTIONS ARE UNDERSTOOD PRIOR TO FITMENT

Wiring Loom Installation Instructions

CHERY J11
Part No: 100472-WL

Tail Harness Length Required: 1200mm
RPA Override Switch Part No: 04848 (If Fitted)

Wiring Loom Installation Time: Approx 30 Mins

Issue Date 10-06-11

Page 1

Part No: 100472-WL

Hayman Reese (Cequent)
PO Box 4050, Dandenong South VIC 3164
Phone 1800 812 017 Email info@haymanreese.com.au

www.haymanreese.com.au



HAYMAN REESE
PART No: 100472-WL
CHERY J11

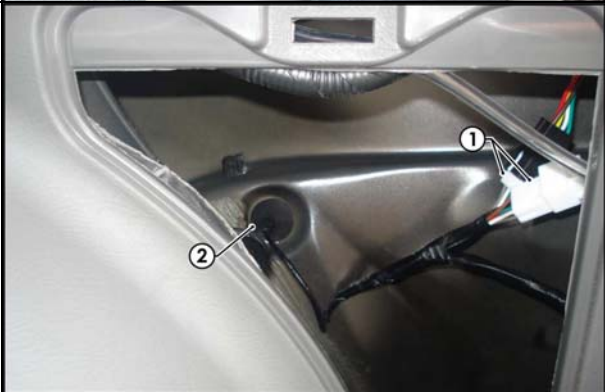
INSTALLATION INSTRUCTIONS

PLEASE ENSURE THAT INSTRUCTIONS ARE UNDERSTOOD PRIOR TO FITMENT

1. In the luggage compartment, remove the RHS access panel cover (1).



2. Locate and disconnect the RHS tail light connector (1).
3. Remove the RHS vehicle grommet (2).



4. Drill a Ø31mm hole in the vehicle sheet metal (1).
5. File any rough or sharp edges and spray on rust inhibitor.



Issue Date 10-06-11

Page 2

Part No: 100472-WL

Hayman Reese (Cequent)
PO Box 4050, Dandenong South VIC 3164
Phone 1800 812 017 Email info@haymanreese.com.au

www.haymanreese.com.au

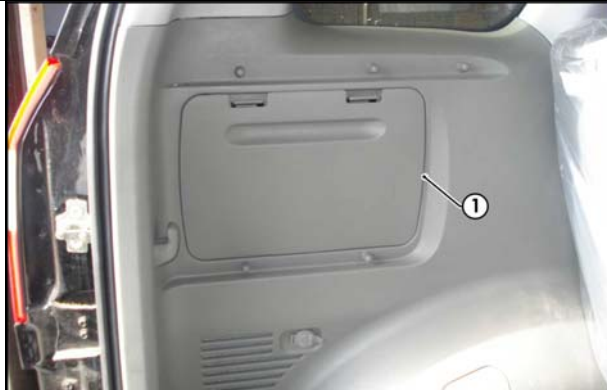


HAYMAN REESE
PART No: 100472-WL
CHERY J11

INSTALLATION INSTRUCTIONS

PLEASE ENSURE THAT INSTRUCTIONS ARE UNDERSTOOD PRIOR TO FITMENT

6. Remove the LHS storage compartment cover (1).



7. From inside the LHS storage compartment, remove the access panel cover (1).
8. Locate and disconnect the LHS tail light connector.



9. From outside the vehicle, remove the two bolts (1) from the LHS rear bumper (2).



Issue Date 10-06-11

Page 3

Part No: 100472-WL

Hayman Reese (Cequent)
PO Box 4050, Dandenong South VIC 3164
Phone 1800 812 017 Email info@haymanreese.com.au

www.haymanreese.com.au



HAYMAN REESE
PART No: 100472-WL
CHERY J11

INSTALLATION INSTRUCTIONS

PLEASE ENSURE THAT INSTRUCTIONS ARE UNDERSTOOD PRIOR TO FITMENT

10. In the LHS wheel arch, carefully remove the two plastic bolts (1).
11. Remove the two Philips head screws (2).
12. Remove the LHS rear bumper (3).



13. Remove the LHS vehicle grommet (1).



14. From inside the luggage compartment, on the RHS, patch the trailer harness (100472-WL) 6-way connector (1) in between the RHS tail light connector (2) and the RHS tail light assembly (3).
15. Route the trailer harness out through the RHS grommet hole.
16. Ensure the trailer harness grommet (4) is seated correctly and makes a good seal.



Issue Date 10-06-11

Page 4

Part No: 100472-WL

Hayman Reese (Cequent)
PO Box 4050, Dandenong South VIC 3164
Phone 1800 812 017 Email info@haymanreese.com.au

www.haymanreese.com.au



HAYMAN REESE
PART No: 100472-WL
CHERY J11

INSTALLATION INSTRUCTIONS

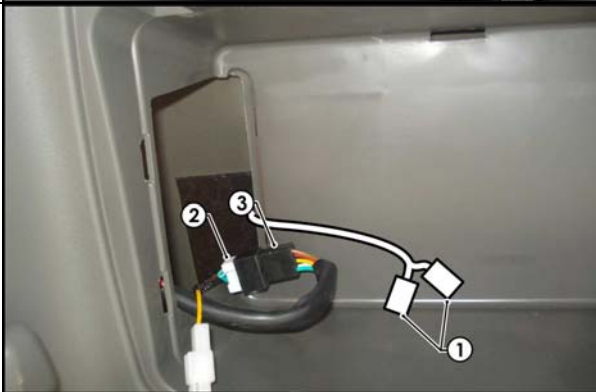
PLEASE ENSURE THAT INSTRUCTIONS ARE UNDERSTOOD PRIOR TO FITMENT

17. Route the trailer harness (1) across the rear of the vehicle and towards the LHS.
18. Route the trailer harness 1-way connector through the grommet hole and into the vehicle cabin.

Note: The use of a guide wire will make routing the harness into the vehicle much easier.



19. Connect the trailer harness 1-way connector to that LHS patch harness mating 1-way connector.
20. Patch the LHS patch harness 6-way connectors (1) in between the LHS tail light connector (2) and the LHS tail light assembly (3).



21. Mount the Trailer Socket (1) to the towbar mounting bracket using M4 fasteners (not supplied).
22. Route the Tail Harness (Tail Length: 1200mm) (2) along the towbar and up through the previously drilled out hole.
23. Ensure the tail harness grommet is seated correctly and makes a good seal.
24. Secure the grommet in place using a cable tie (not supplied).



Issue Date 10-06-11

Page 5

Part No: 100472-WL

Hayman Reese (Cequent)
PO Box 4050, Dandenong South VIC 3164
Phone 1800 812 017 Email info@haymanreese.com.au

www.haymanreese.com.au

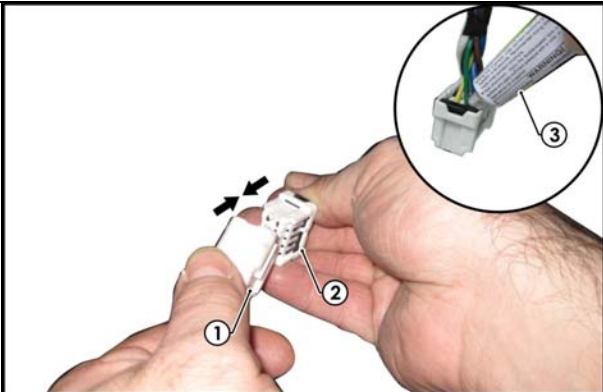


HAYMAN REESE
PART No: 100472-WL
CHERY J11

INSTALLATION INSTRUCTIONS

PLEASE ENSURE THAT INSTRUCTIONS ARE UNDERSTOOD PRIOR TO FITMENT

25. Connect the tail harness 8-way connector (1) to the Trailer Harness mating 8-way connector (2).
26. Waterproof the back of the 8-way connectors (1&2) using electrical grease or silicone (3).



27. Test the Trailer Harness function using a Light Board or multimeter.
28. Secure all harnesses using cables ties (not supplied).
29. Re-fit all removed parts and secure all fasteners, ensuring there are no squeaks or rattles.
30. Place the instructions in the glove box after fitment.

Issue Date 10-06-11

Page 6

Part No: 100472-WL

Hayman Reese (Cequent)
PO Box 4050, Dandenong South VIC 3164
Phone 1800 812 017 Email info@haymanreese.com.au

www.haymanreese.com.au

