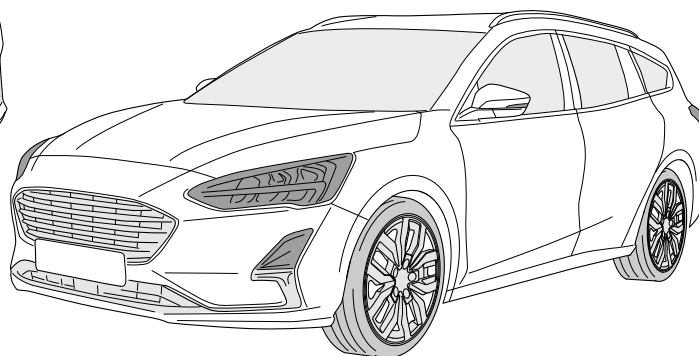
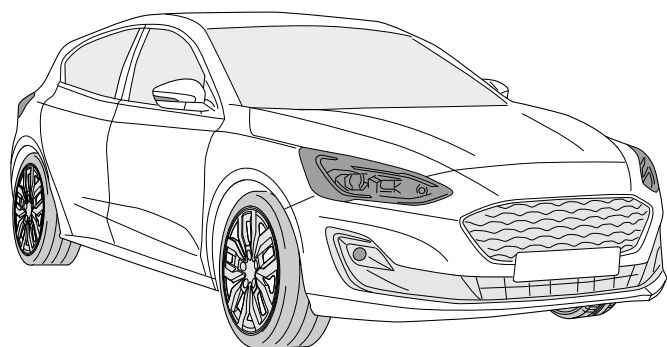


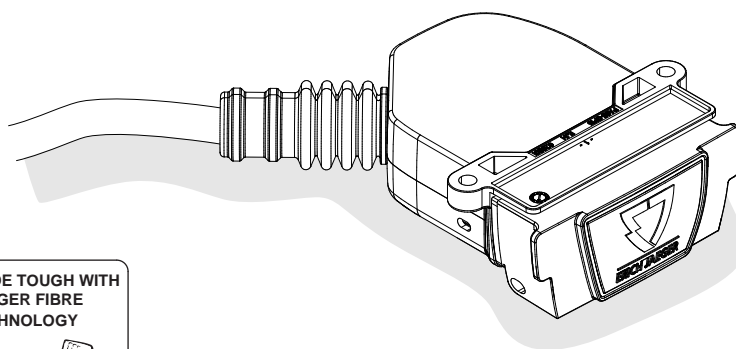


ERICH JAEGER



750109

FORD Focus Combi	04/18 >>
FORD Focus Combi mHEV	03/22 >>
FORD Focus Hatchback	04/18 >>
FORD Focus Hatchback mHEV	10/21 >>



BRAKE CONTROLLER PREPARED 	TRAILER BULB OUT DETECTION 	SELF-DIAGNOSTIC CAN-BUS ECU JaegerCANtrol™	MADE TOUGH WITH JAEGER FIBRE TECHNOLOGY
LED + BULB 	AUTOMATIC TRAILER DETECTION 	WATERPROOF SOCKET INCLUDED WEATHERLOCK™	EV COMPATIBLE

Reference:

The following information must be reviewed before beginning the assembly:

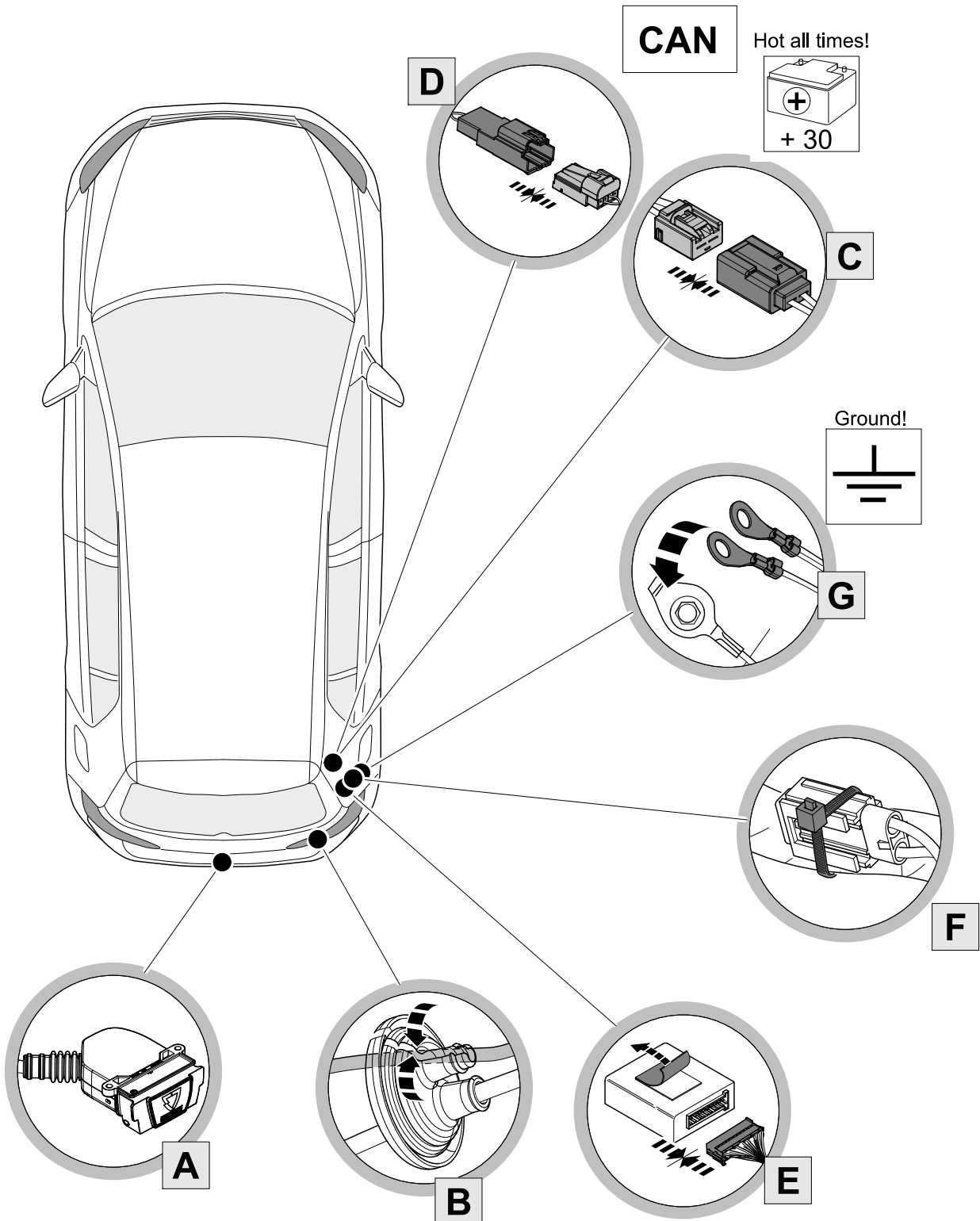
The installation instructions are to be thoroughly read.

The installation should be carried out by qualified personnel with the relevant technical knowledge. The vehicle manufacturers' current technical notices and information on retrofitting must be followed. The removal and replacement instructions found in the current repair manuals must be followed.

It must be ensured that the vehicle is technically suitable for the installation of a trailer hitch.



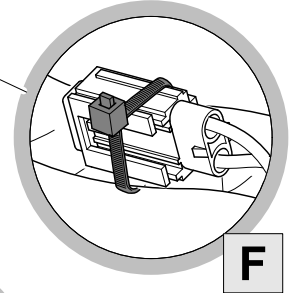
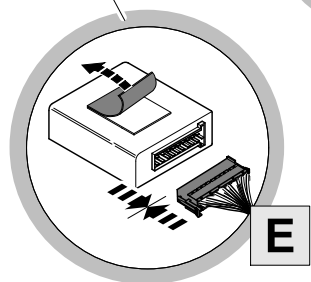
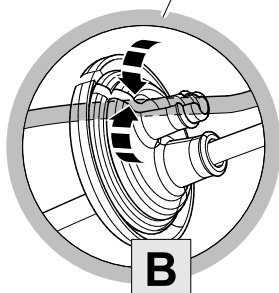
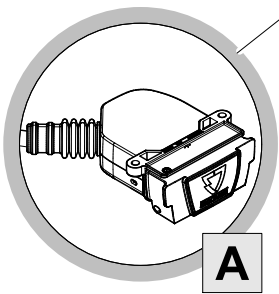
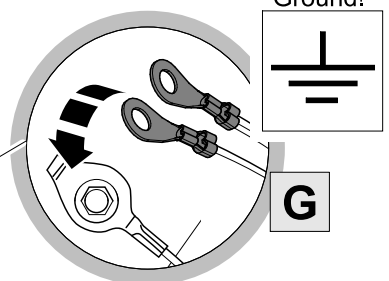
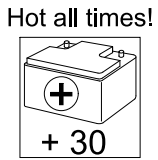
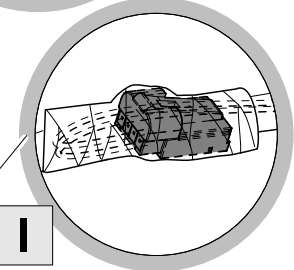
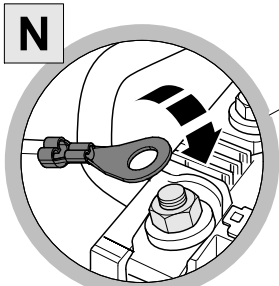
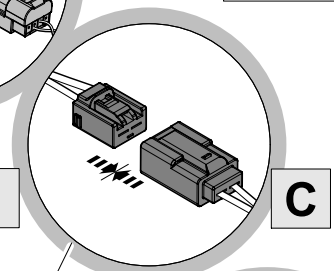
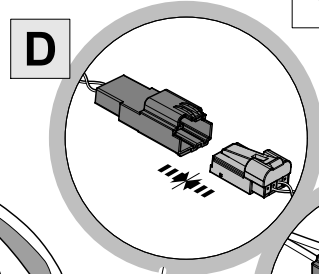
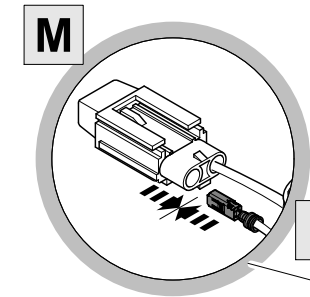
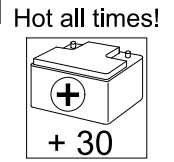
Vehicle with preparation (full function)





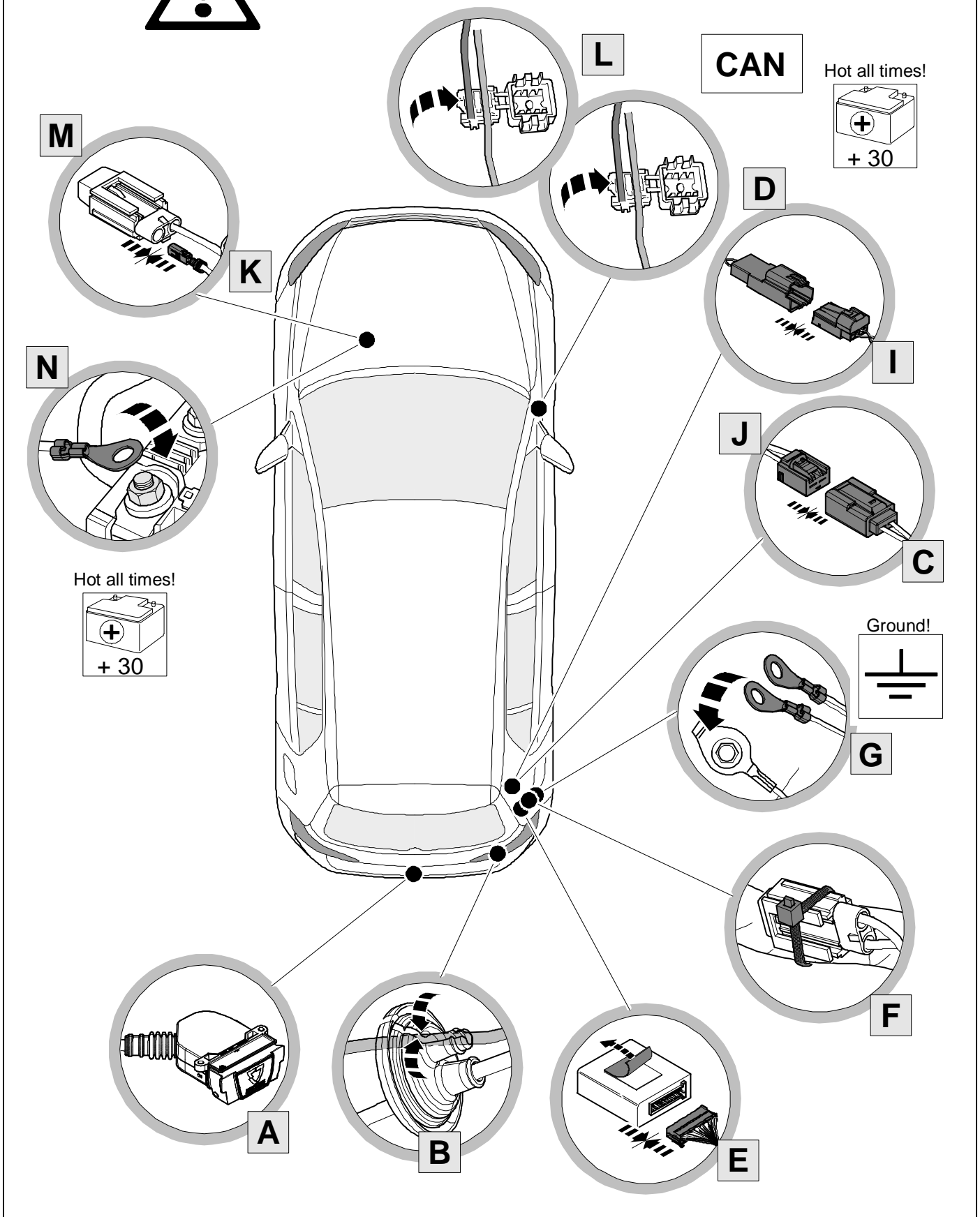
Vehicle with preparation except power supply

CAN

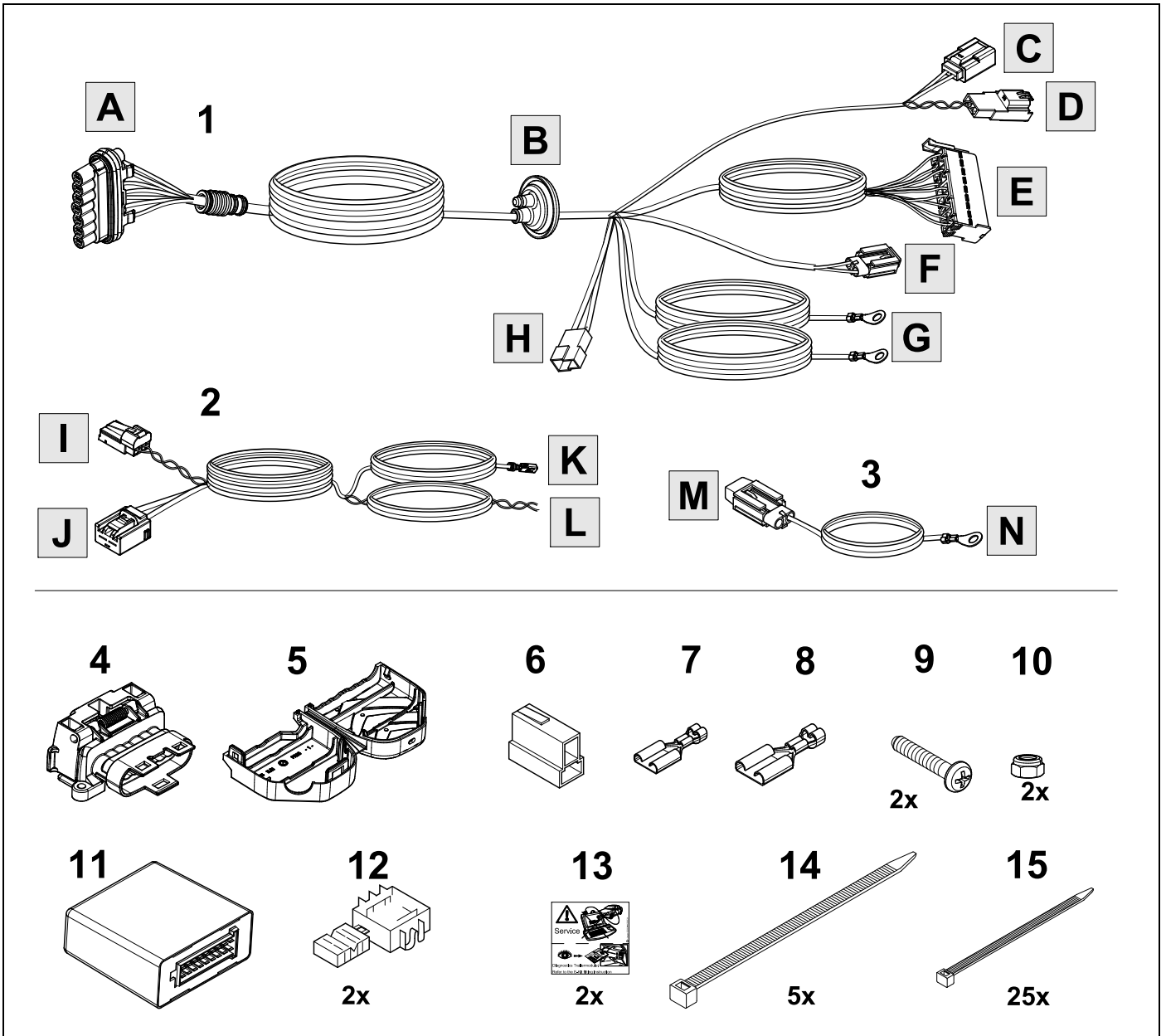




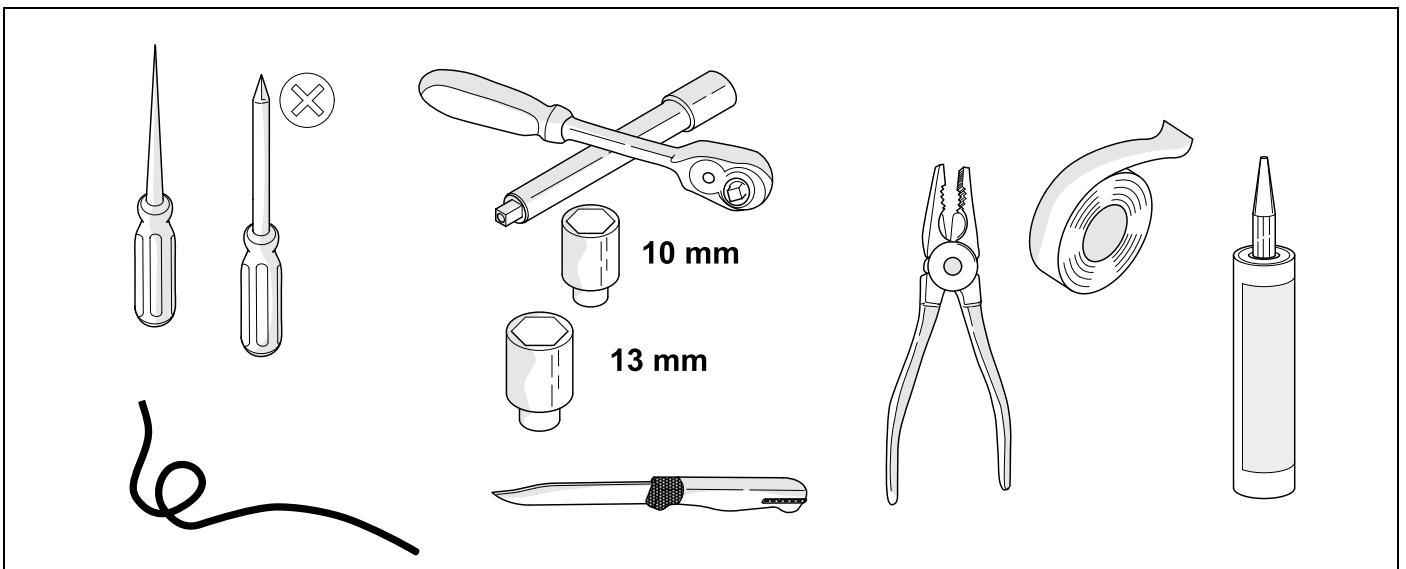
Vehicle without preparation



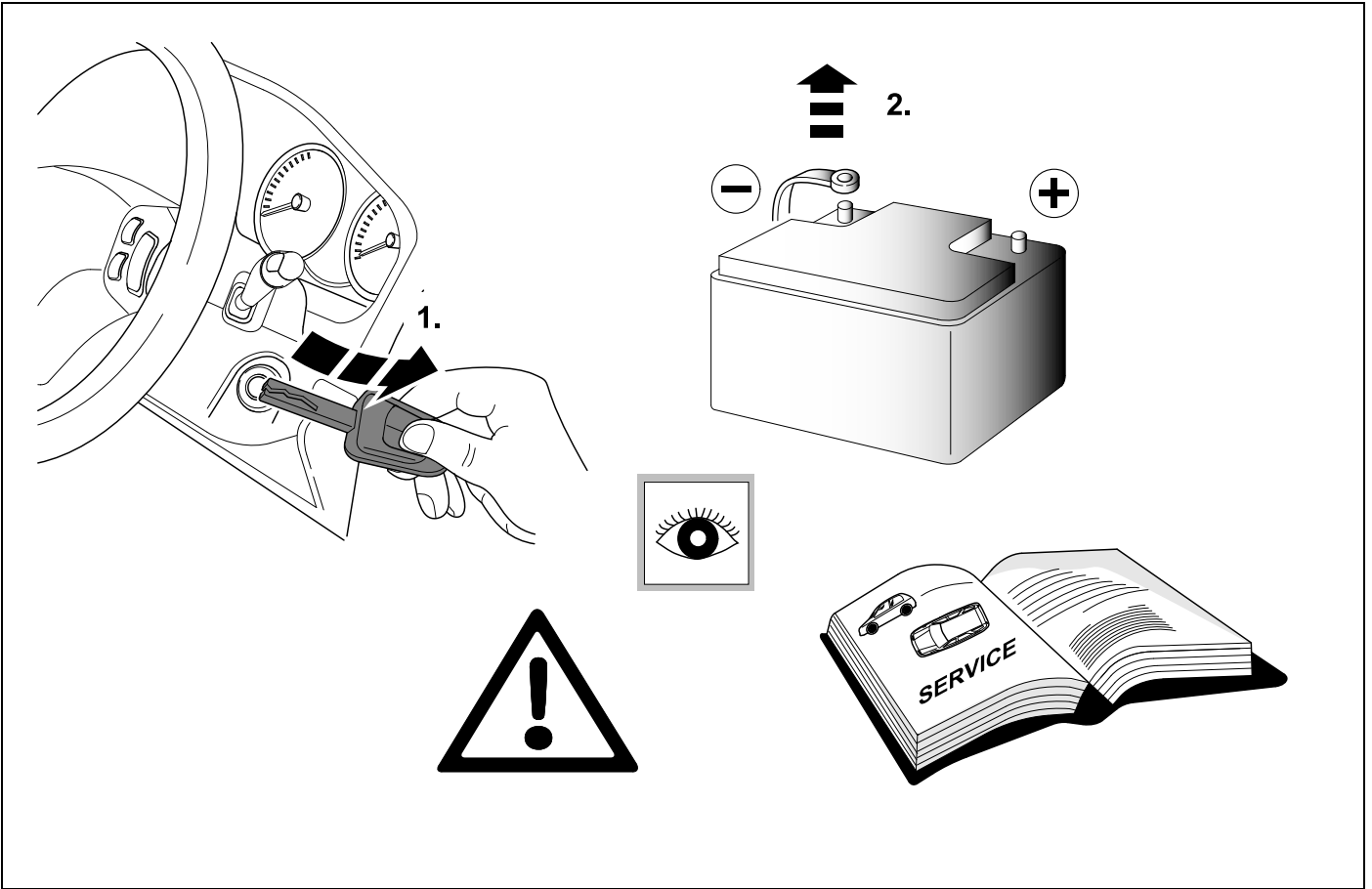
KIT



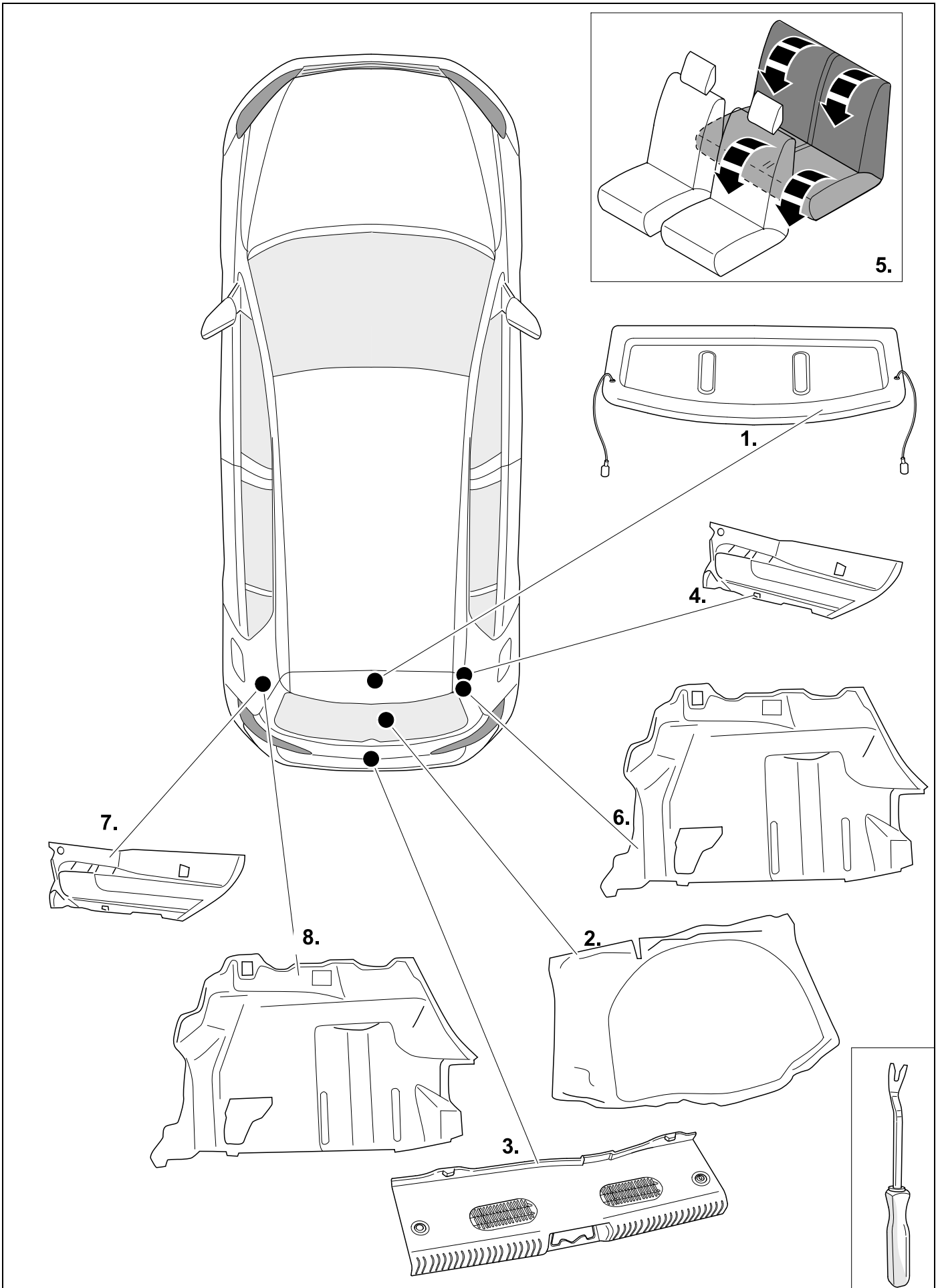
TOOLS



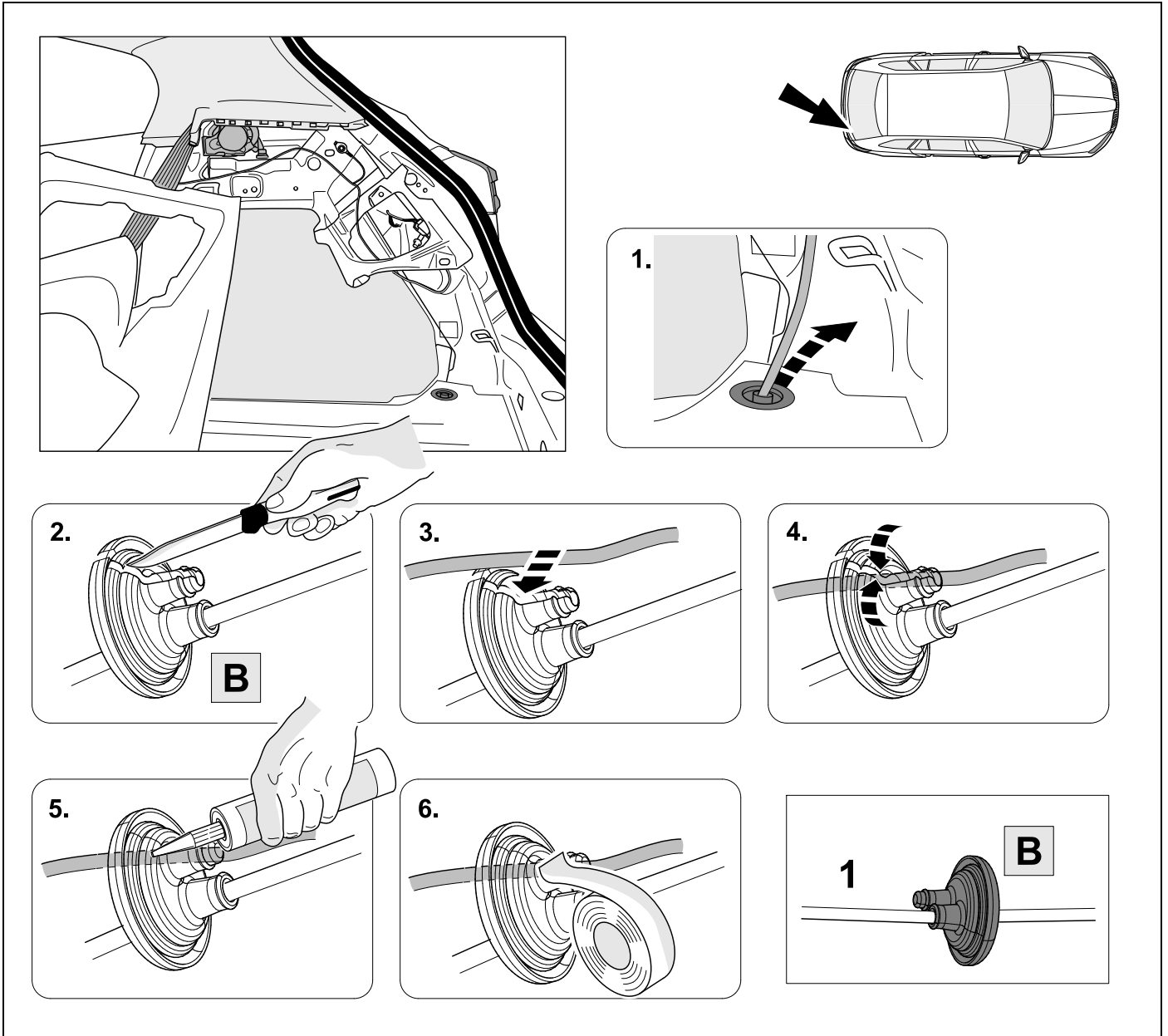
1



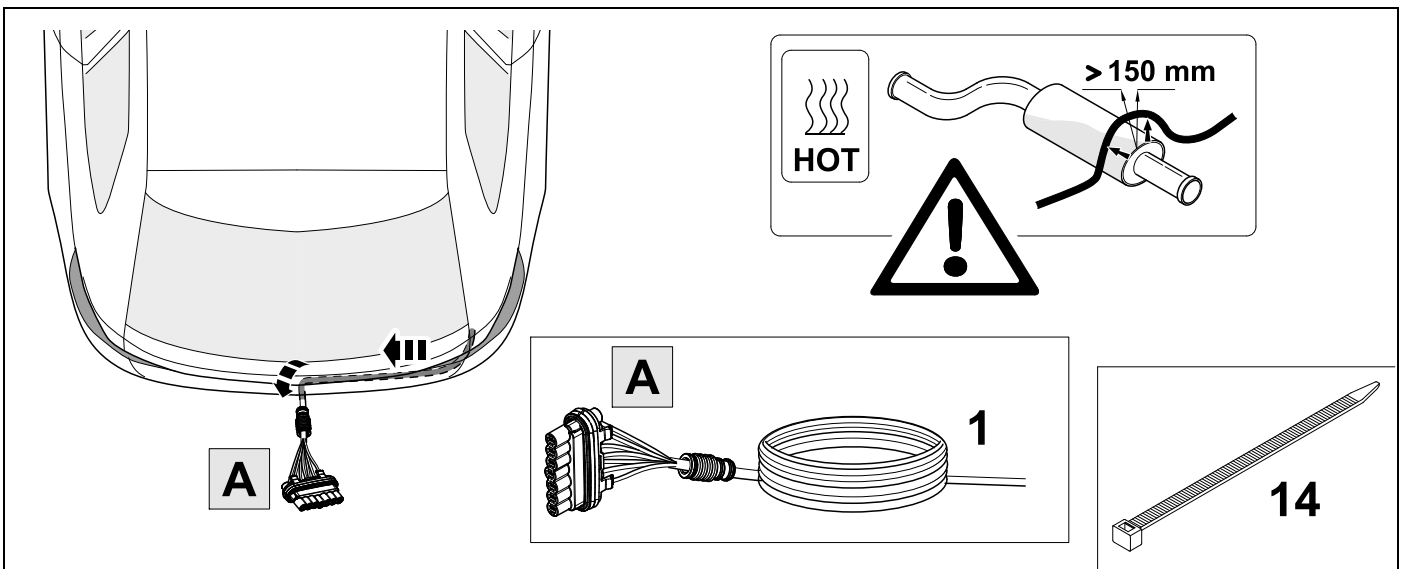
2 REMOVE



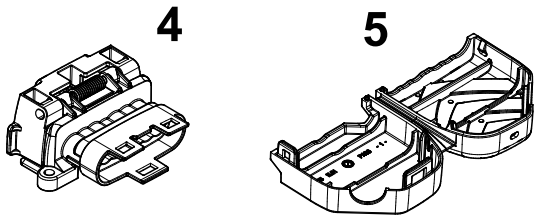
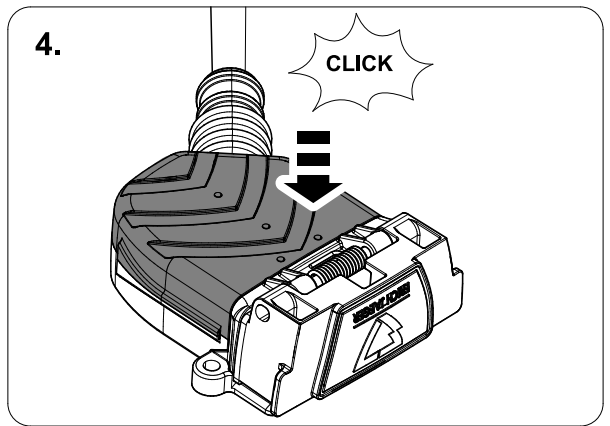
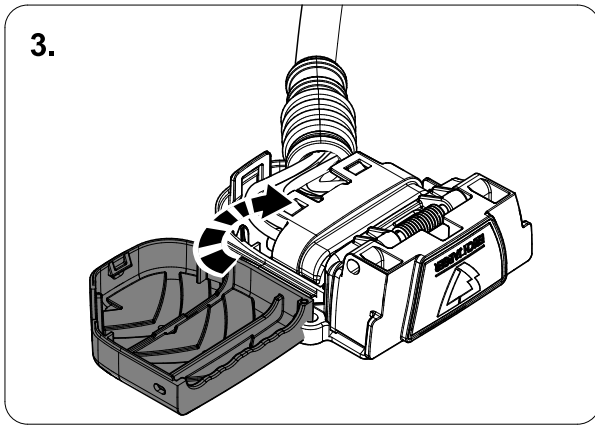
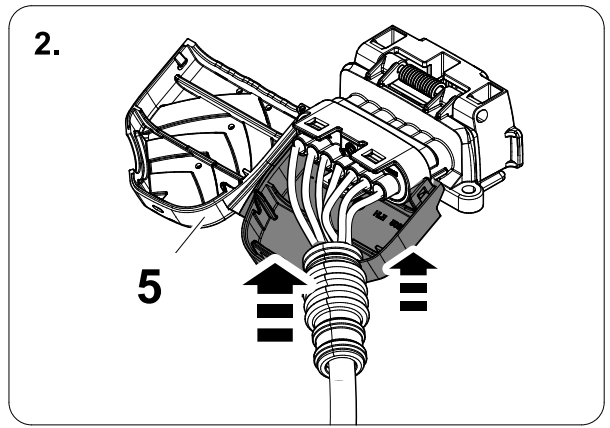
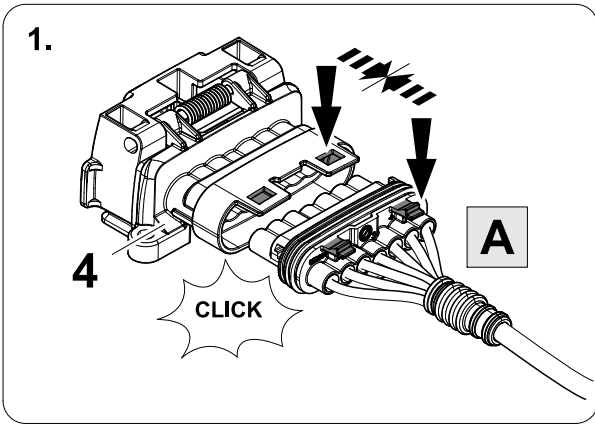
3



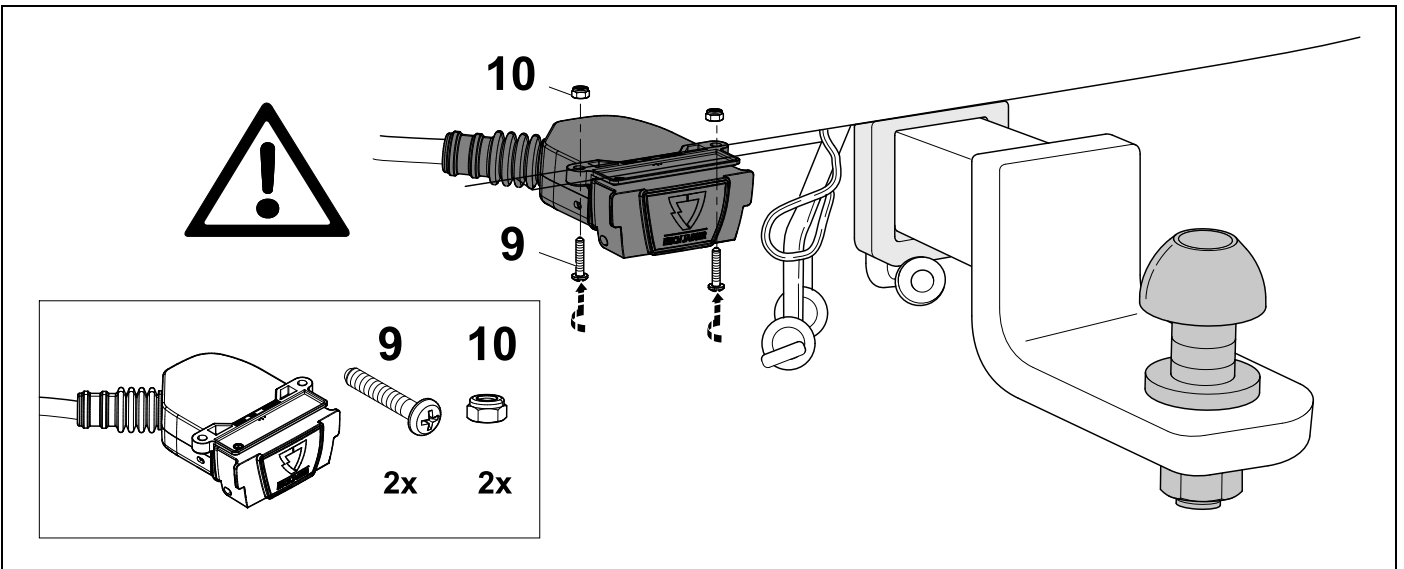
4



5



6



7



8

1	ye	
2	bk	
3	wh	
4	gn	
5	bu	
6	rd	
7	bn	

8	bk	wh	gy	gn	rd	bu	ye	bn	pu	or	no
---	----	----	----	----	----	----	----	----	----	----	----

	black	white	grey	green	red	blue	yellow	brown	purple	orange	not occupied
--	-------	-------	------	-------	-----	------	--------	-------	--------	--------	--------------

9

Focus Hatchback / Hatchback PHEV

1

G

G

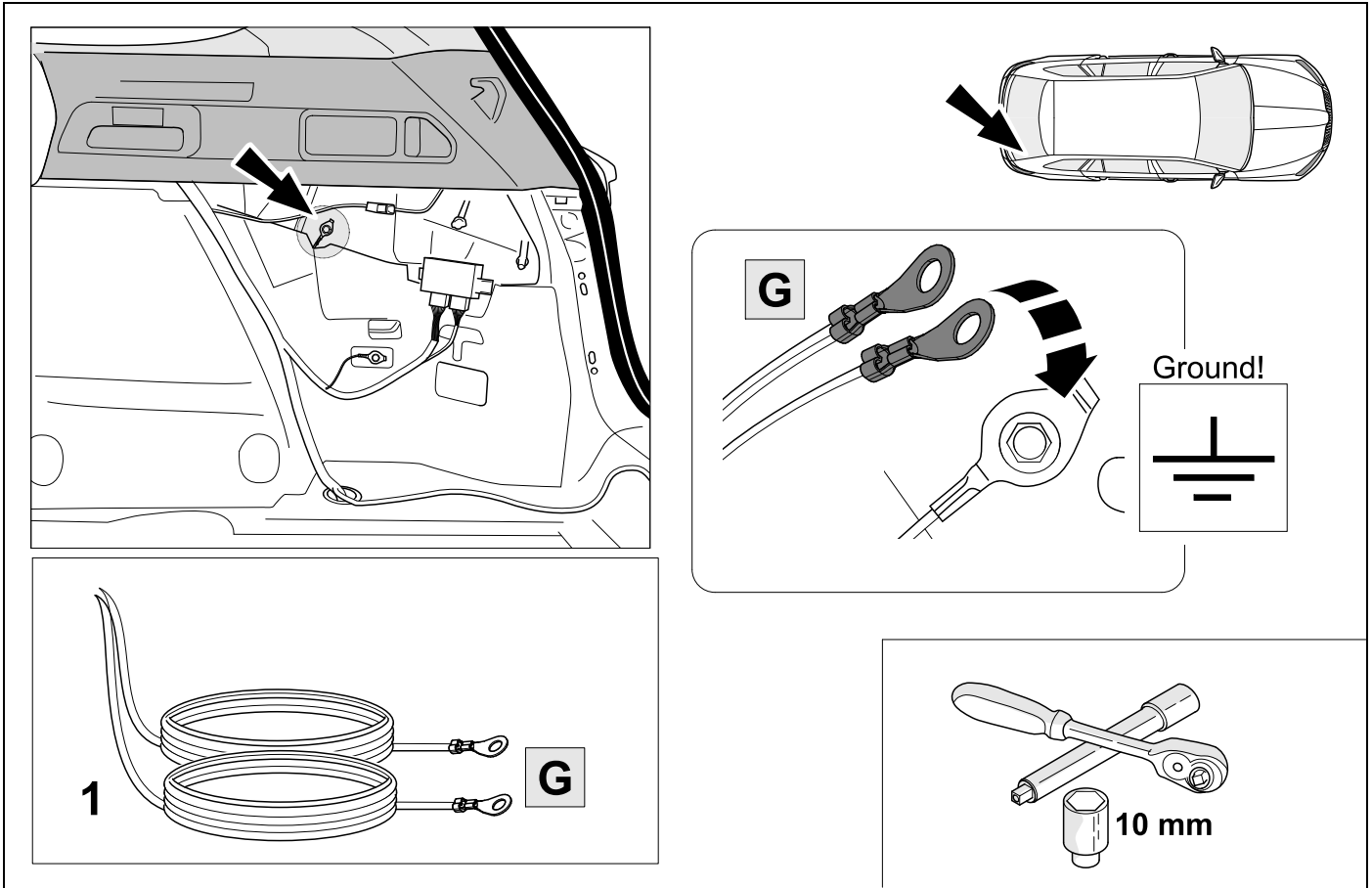
Ground!

10 mm

The diagram illustrates the installation of a ground connection in the rear of a Focus Hatchback. It shows the location of the ground point on the rear seat area, the required wiring harness (labeled '1'), and the necessary tools: a screwdriver and a 10mm nut. A detailed view shows the ground point being connected to a terminal labeled 'G', with a 'Ground!' symbol and a ground symbol below it.

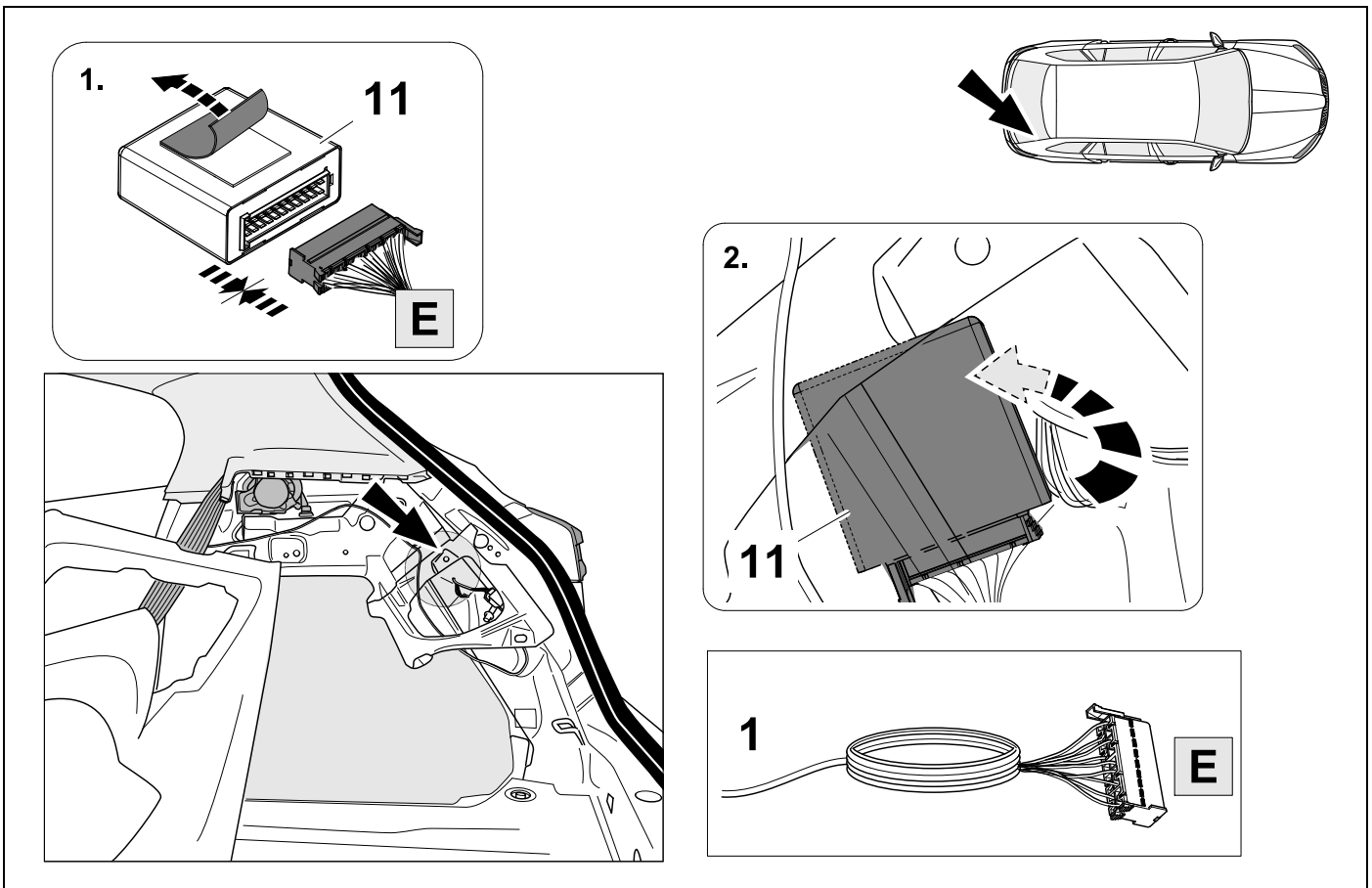
10

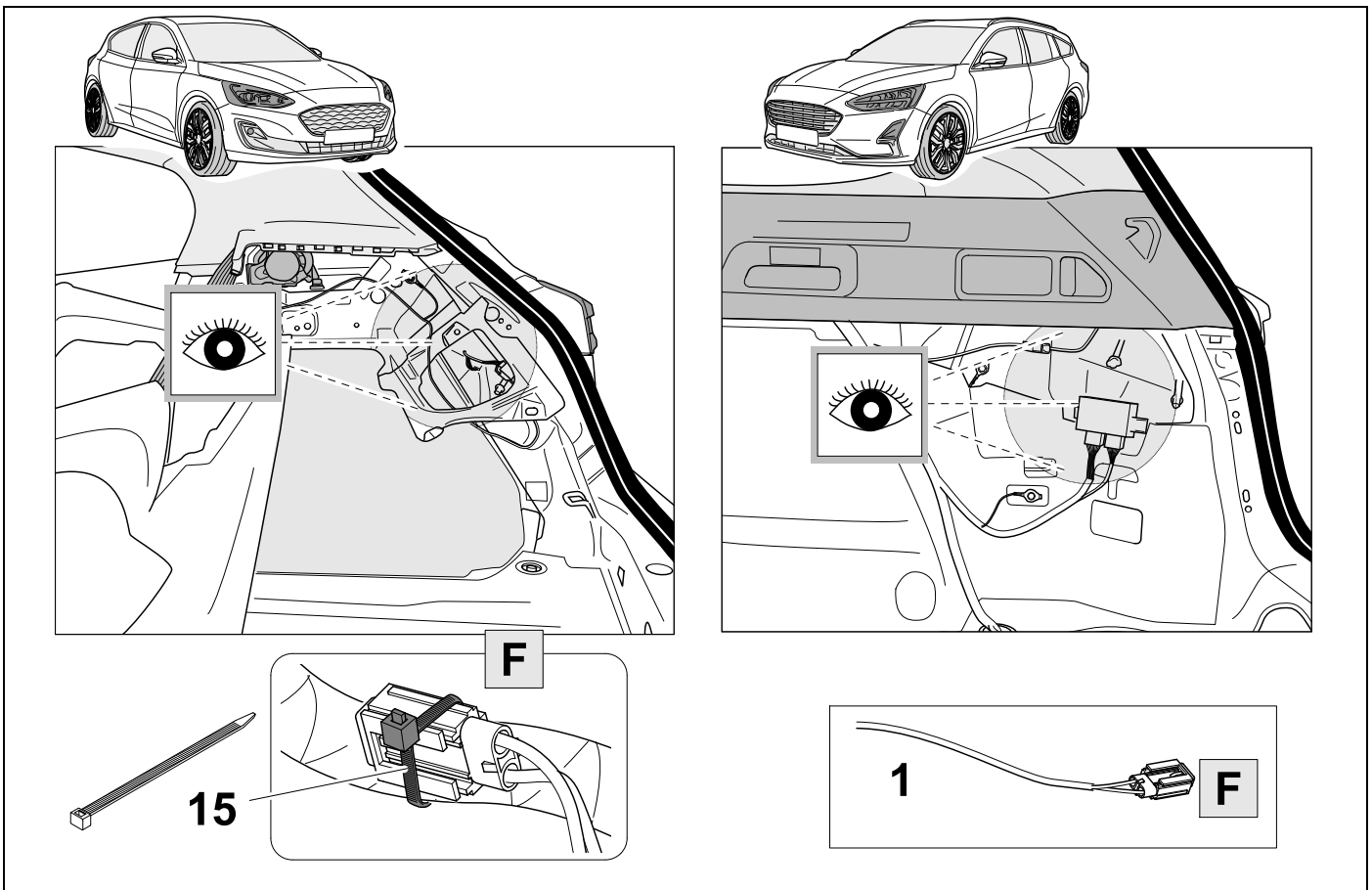
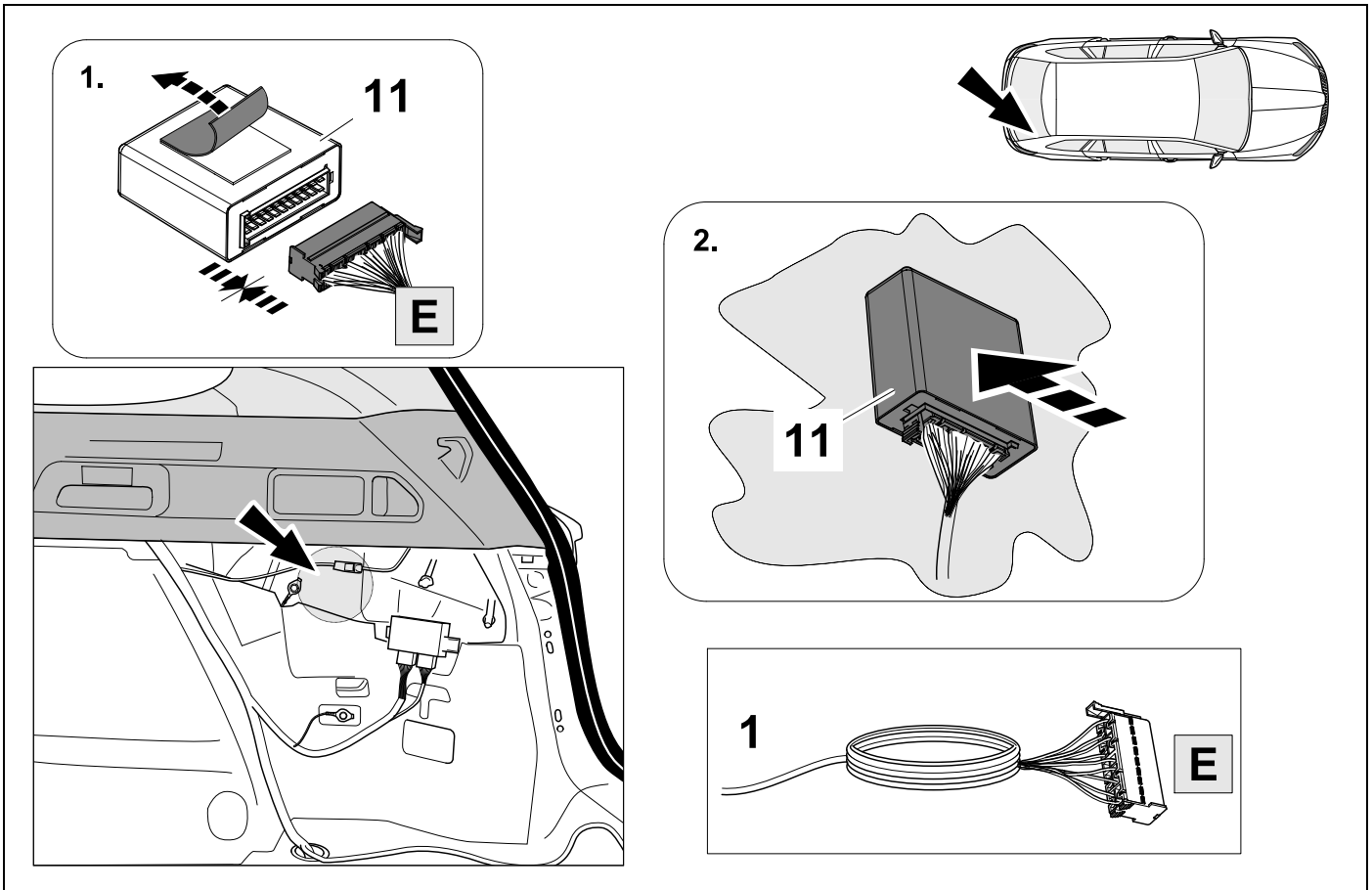
Focus Combi / Combi PHEV

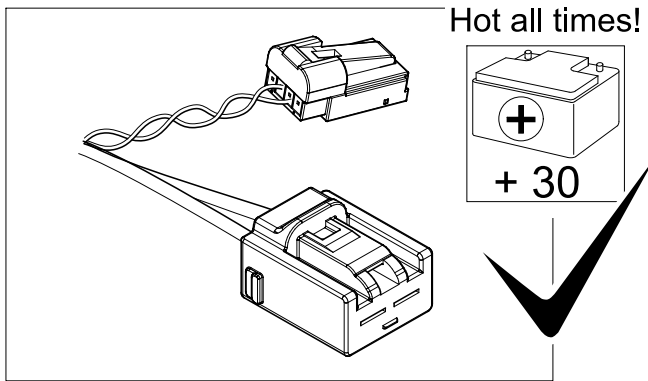
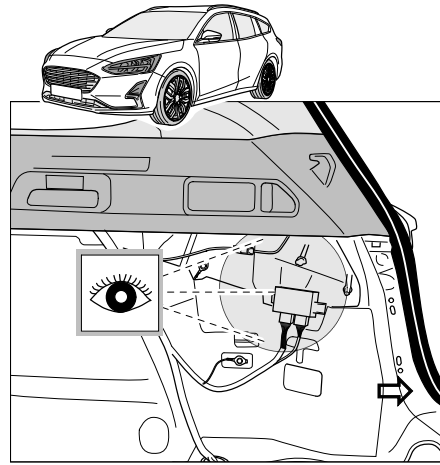
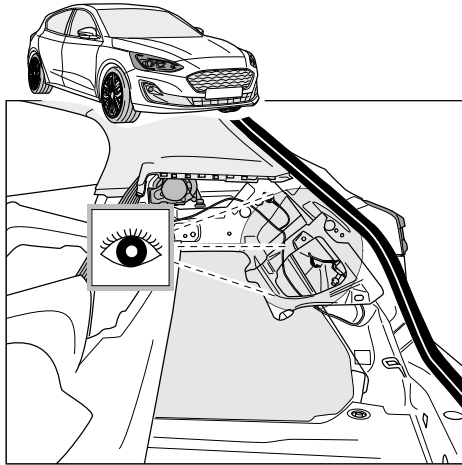


11

Focus Hatchback / Hatchback PHEV



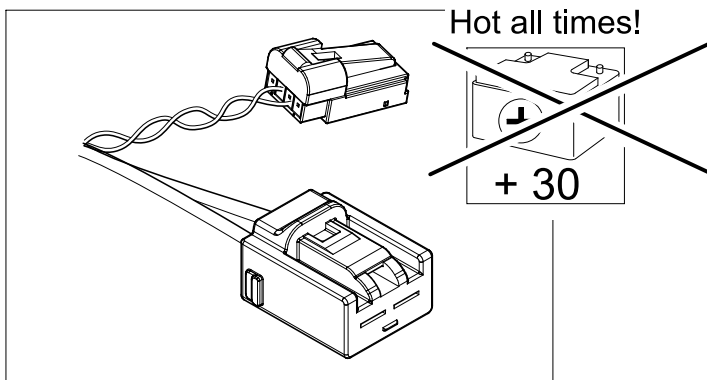




OPTION 1

15

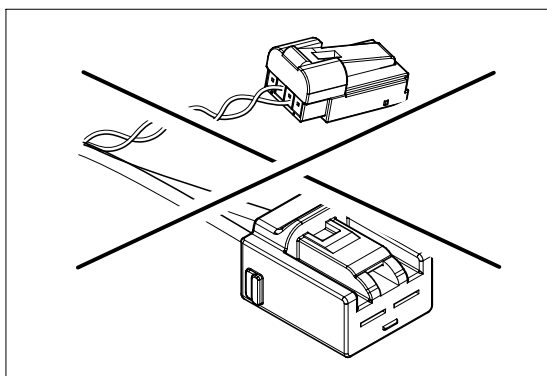
32 ⇒ **38**



OPTION 2

16 ⇒ **23**

32 ⇒ **38**

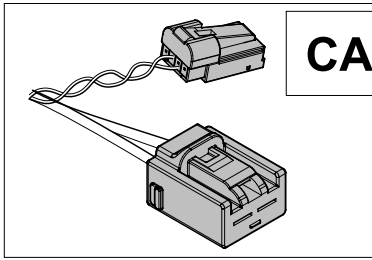


OPTION 3

24 ⇒ **38**

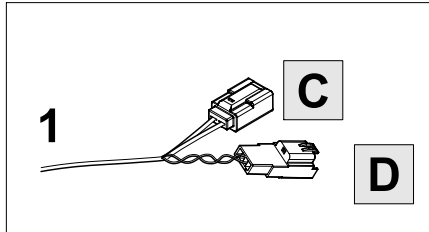
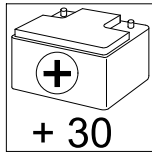
15

OPTION 1



CAN

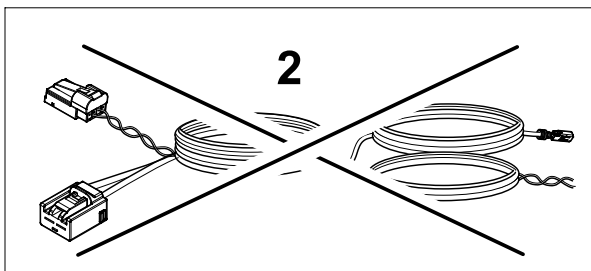
Hot all times!



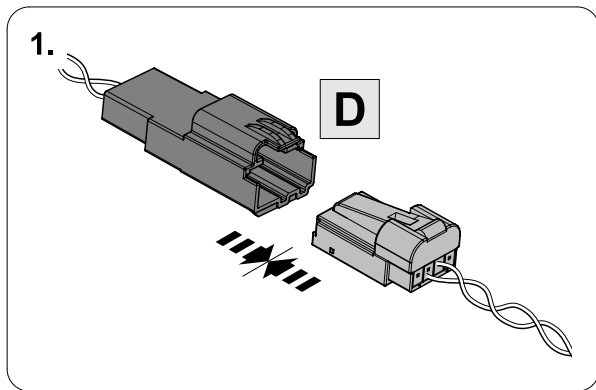
1

C

D



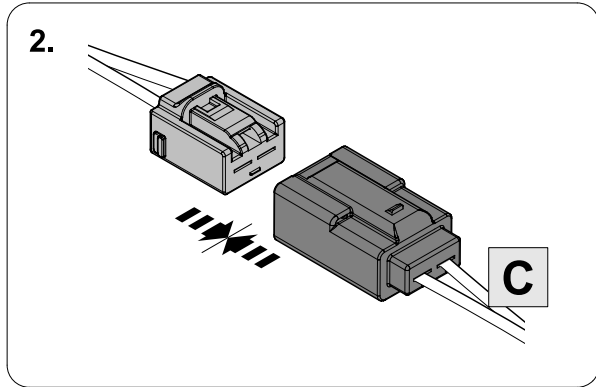
2



1.

D

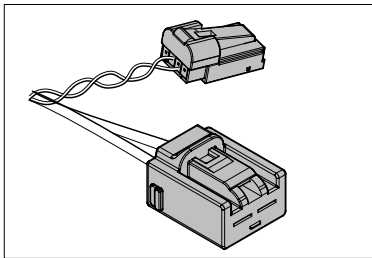
C



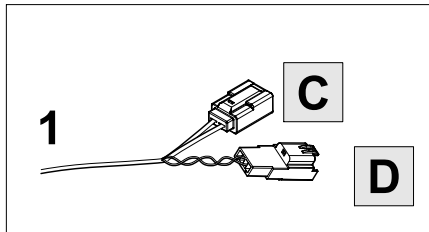
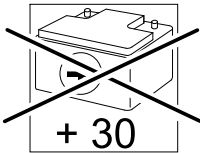
2.

16

OPTION 2



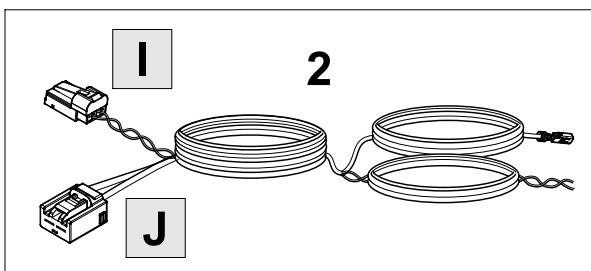
Hot all times!



1

C

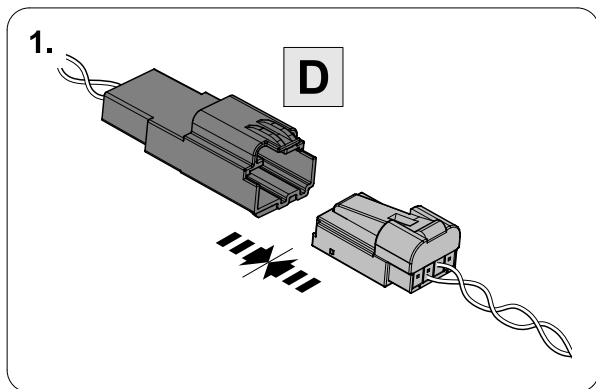
D



2

I

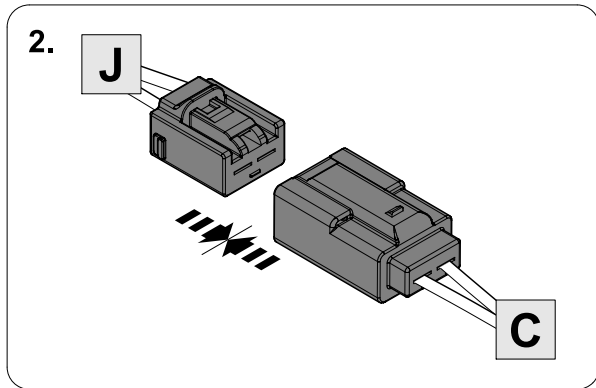
J



1.

D

C

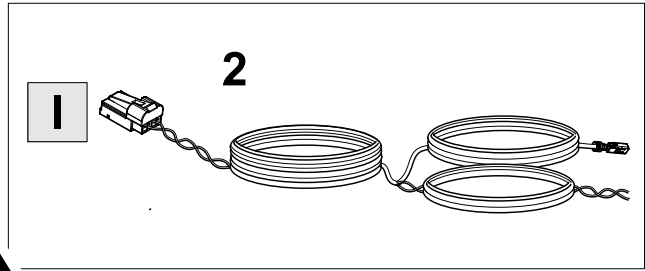
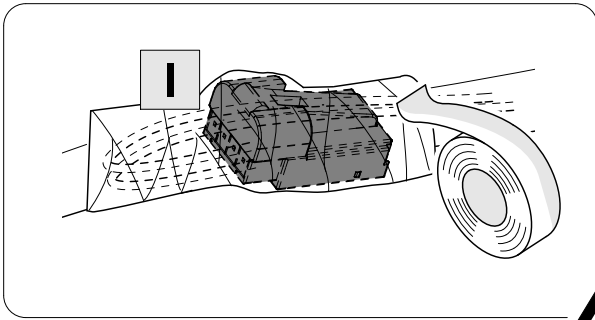


2.

J

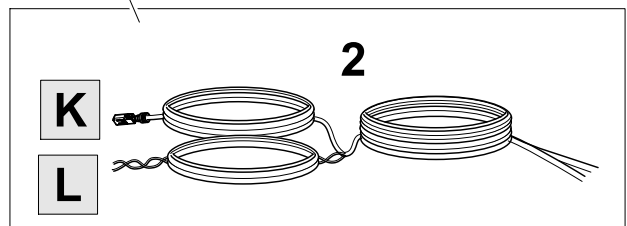
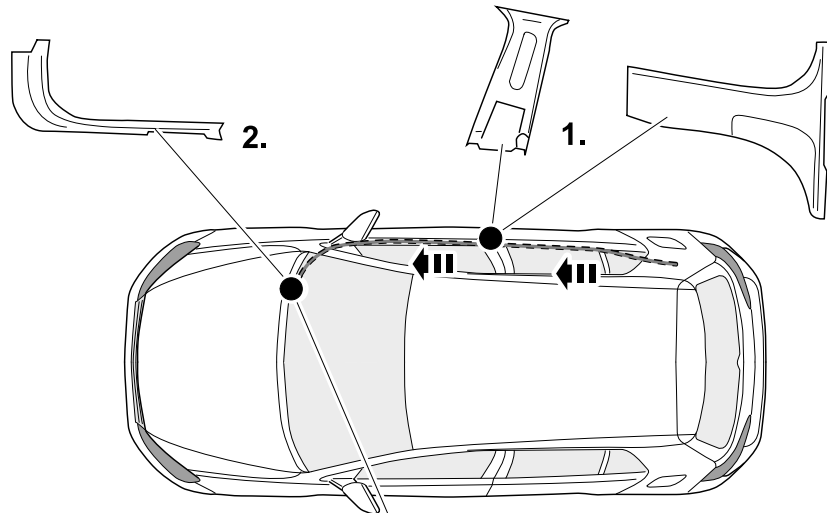
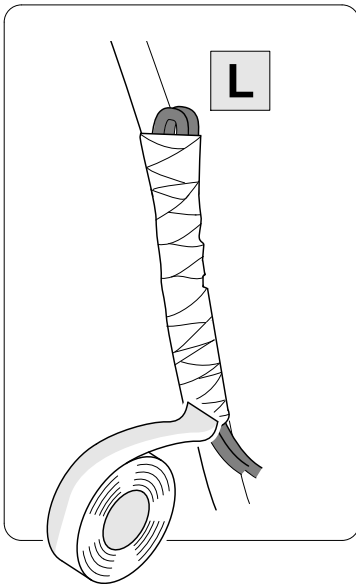
17

OPTION 2



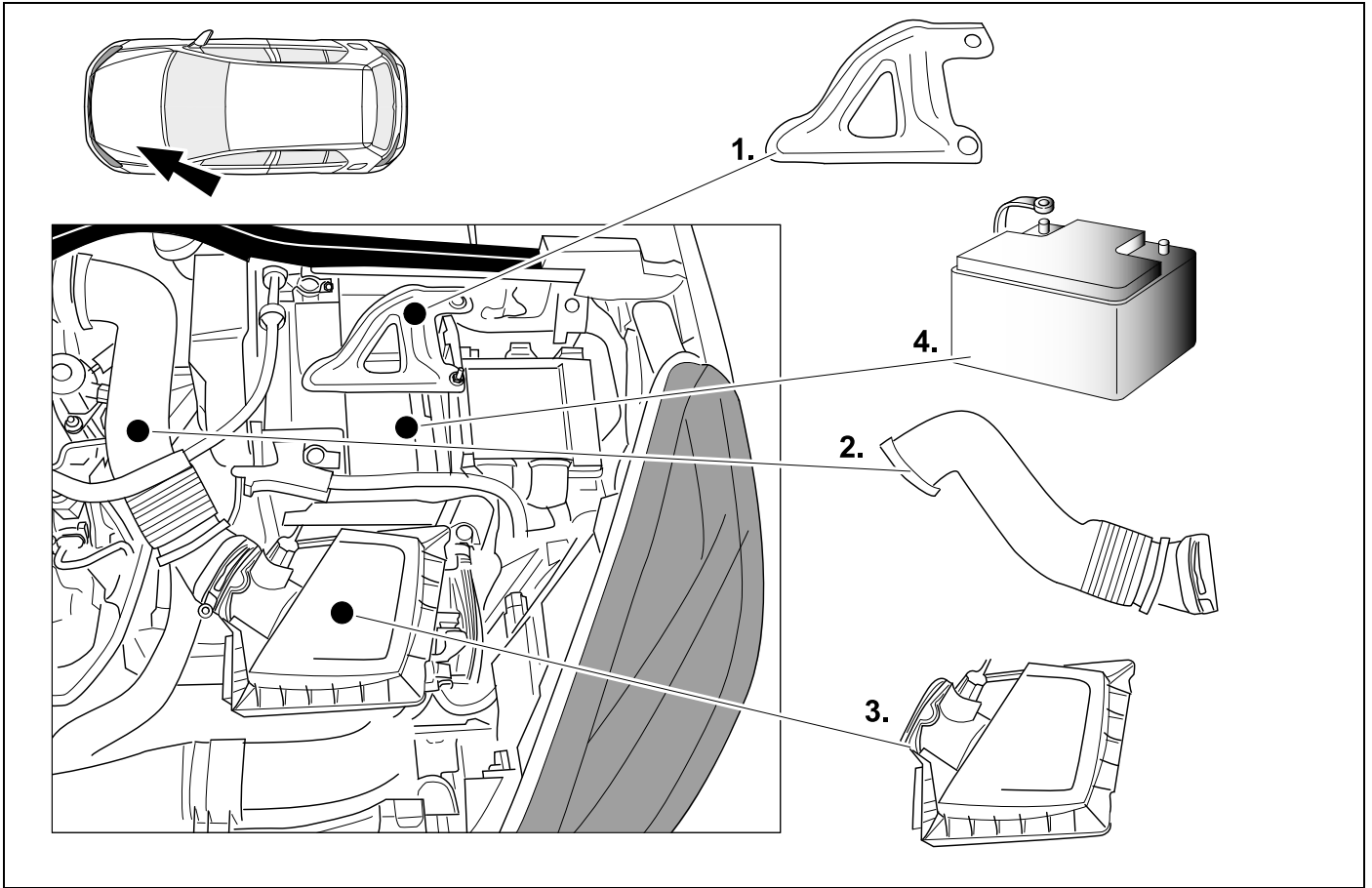
18 REMOVE

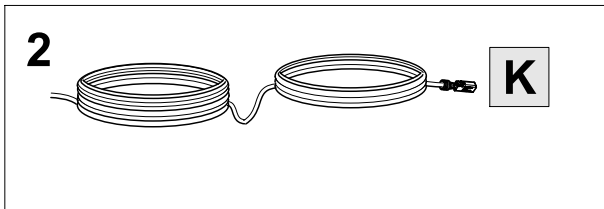
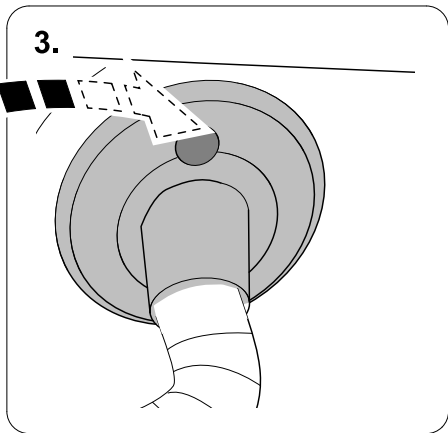
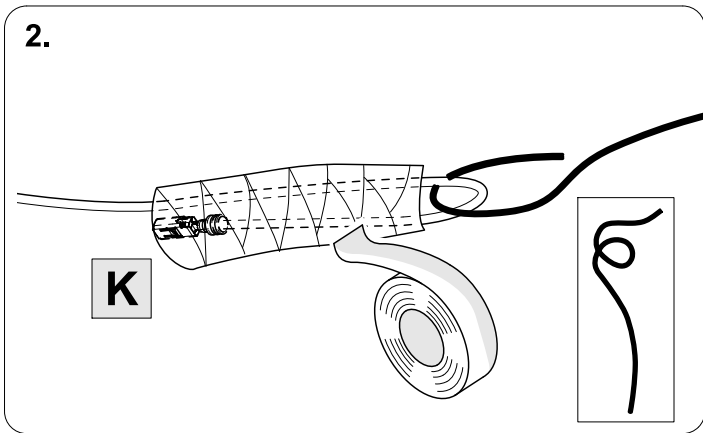
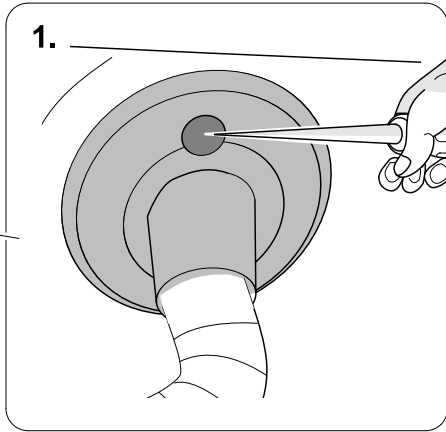
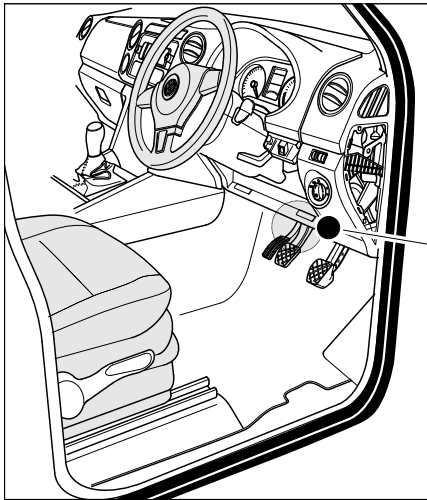
OPTION 2



19 REMOVE

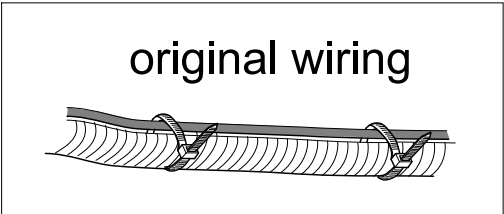
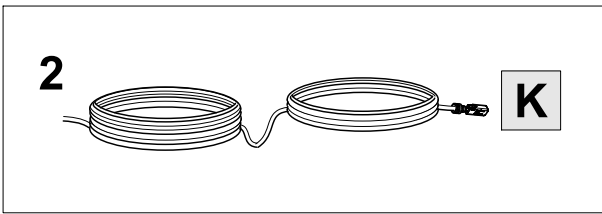
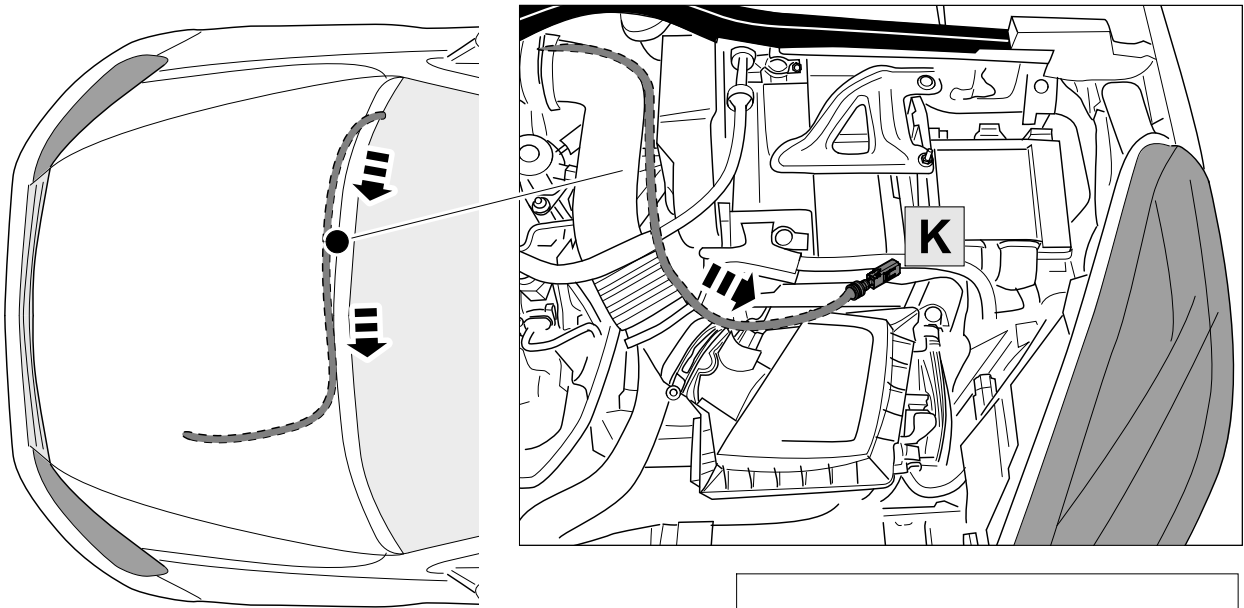
OPTION 2





21

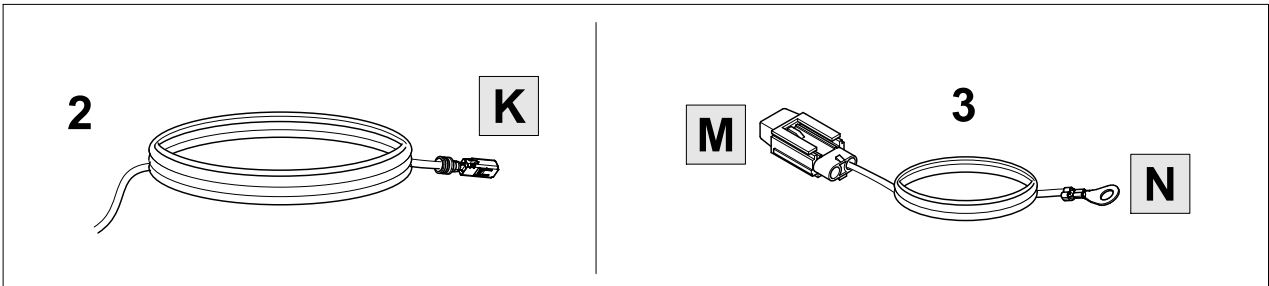
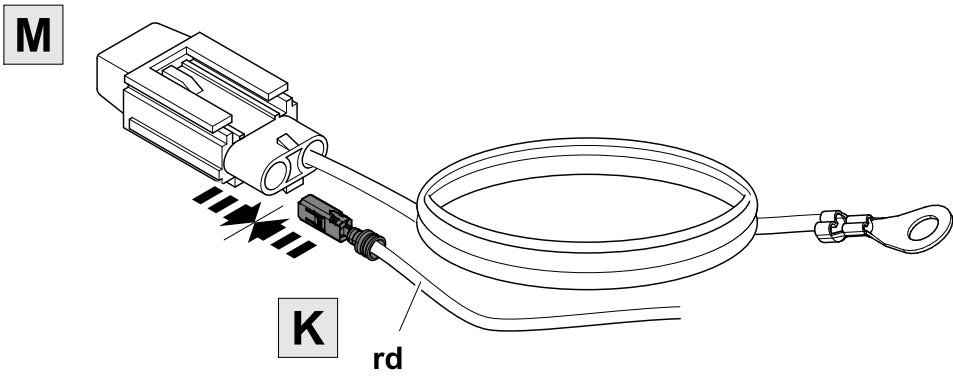
OPTION 2



22

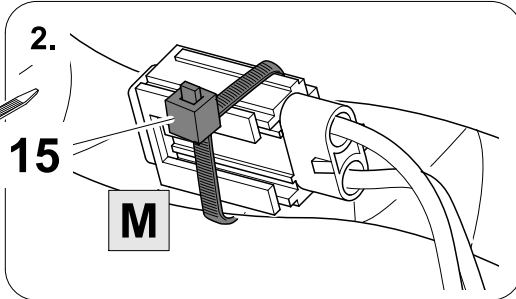
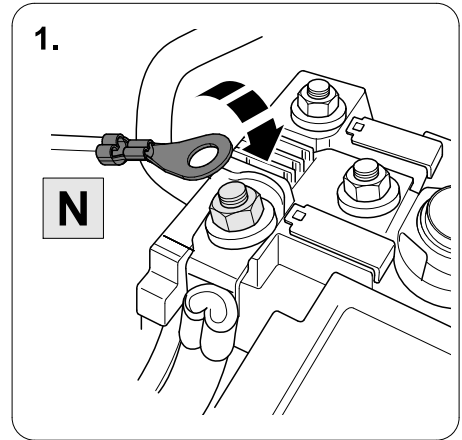
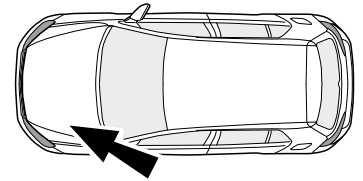
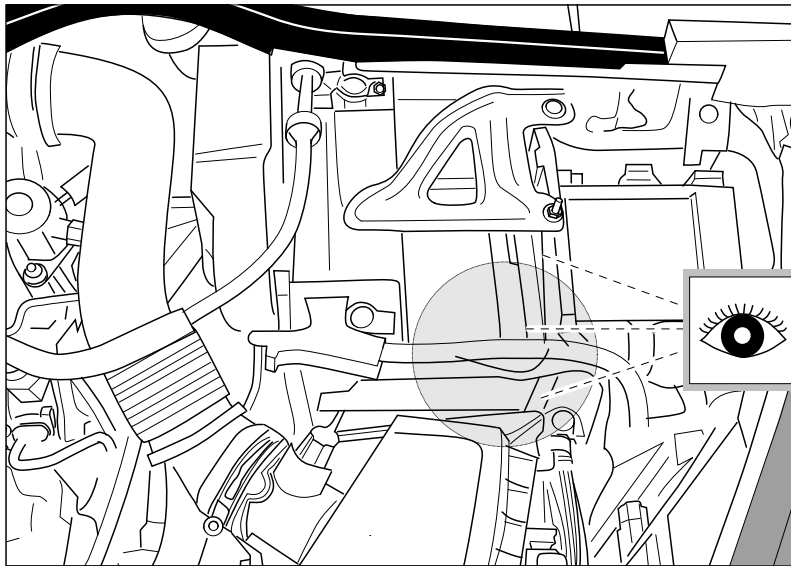
👁️ ⇒ 8 + 35

OPTION 2

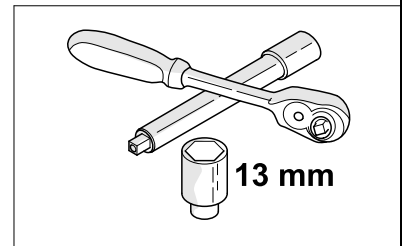
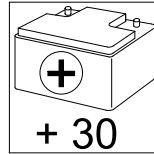




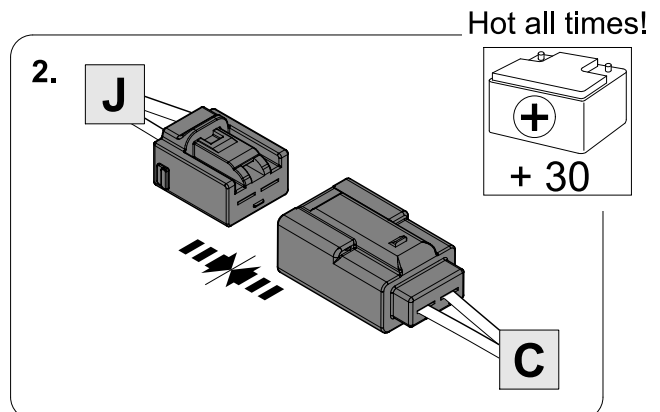
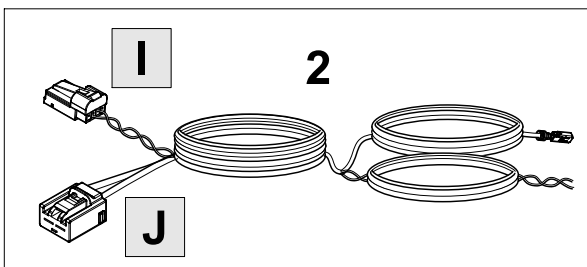
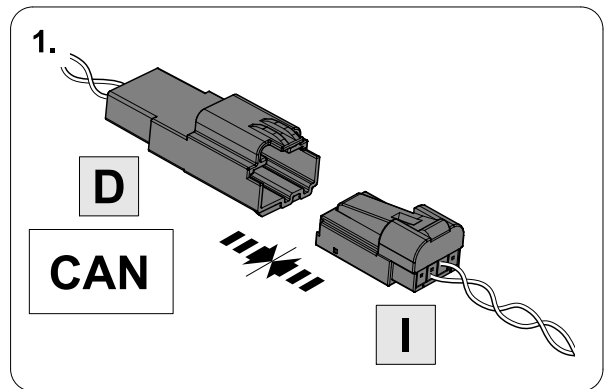
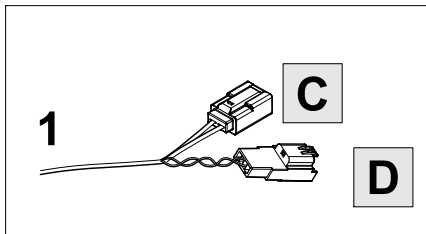
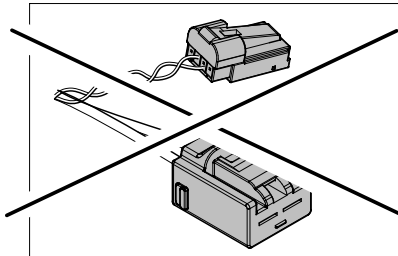
OPTION 2



Hot all times!

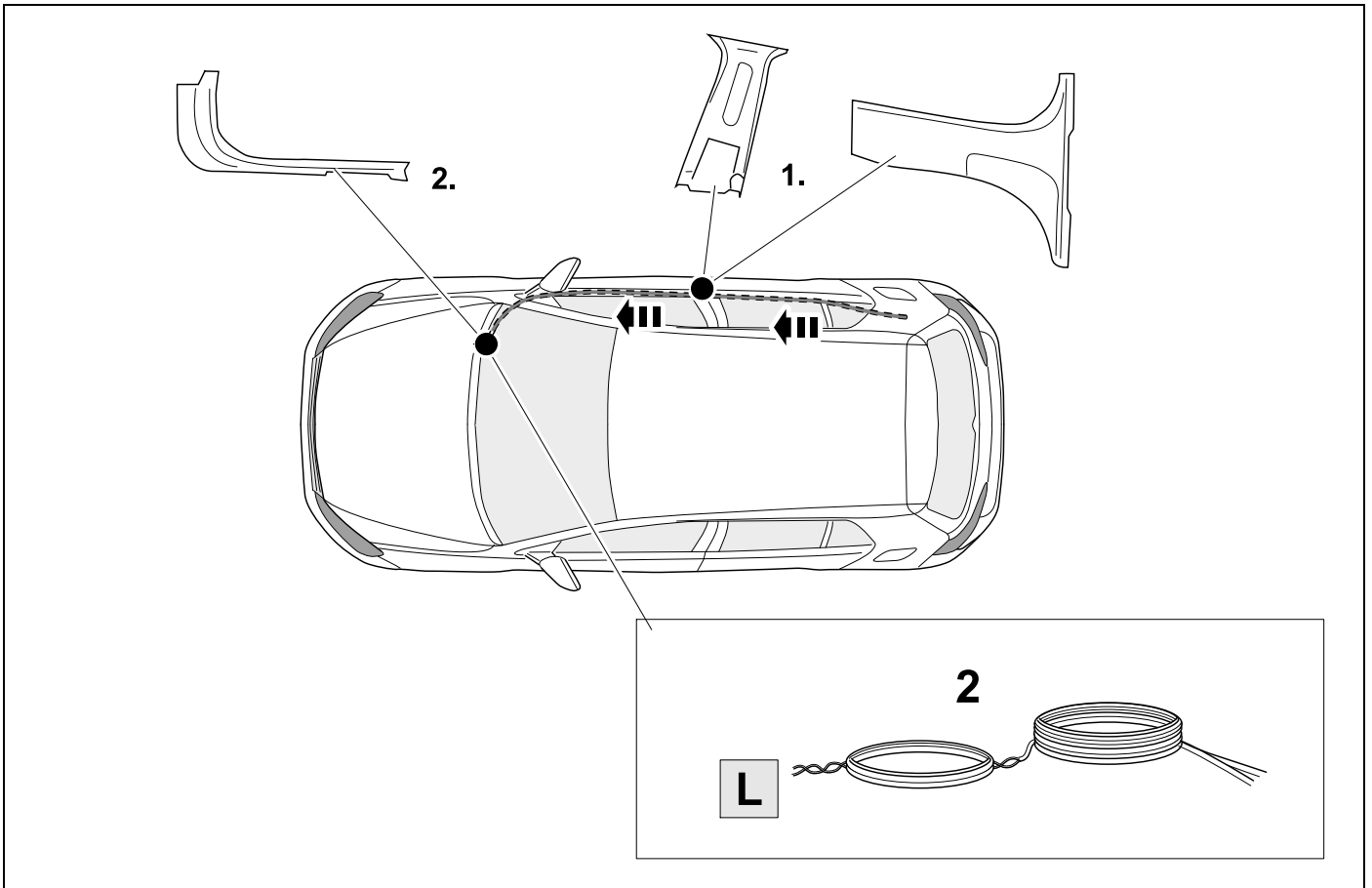


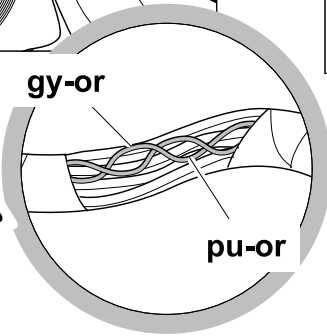
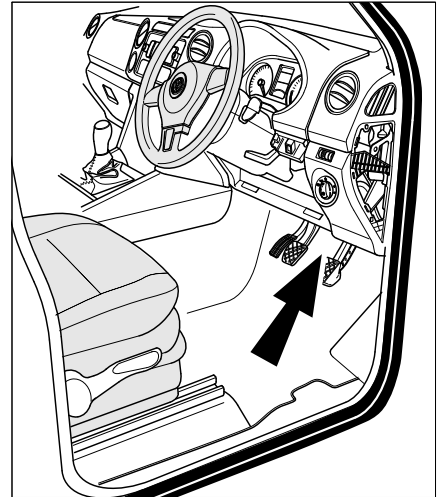
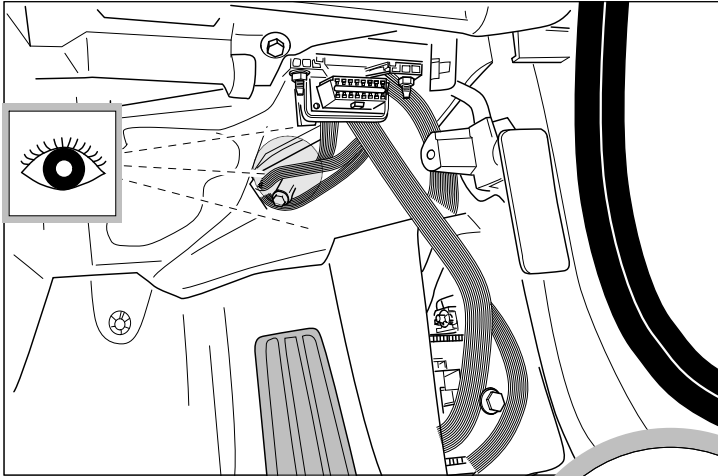
OPTION 3



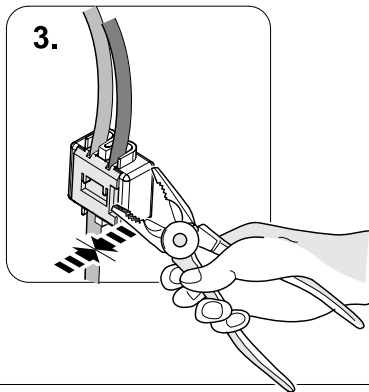
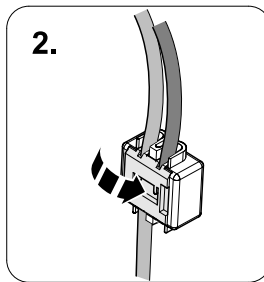
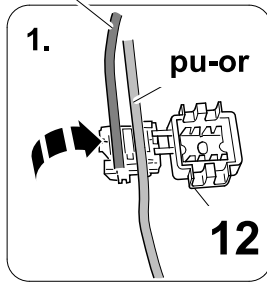
25 REMOVE

OPTION 3

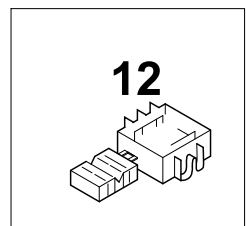
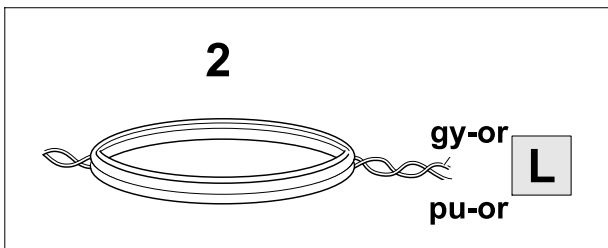
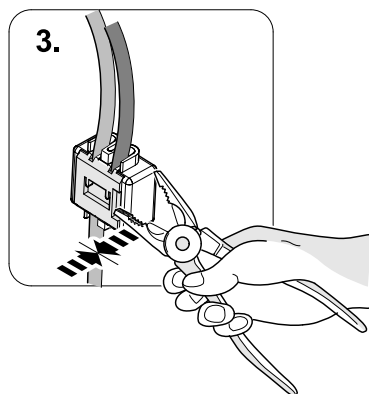
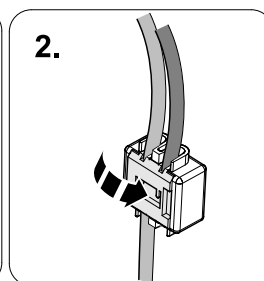
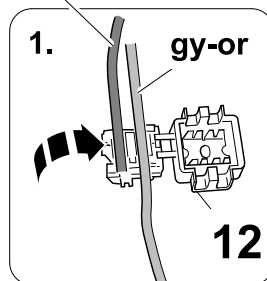




pu-or **L**

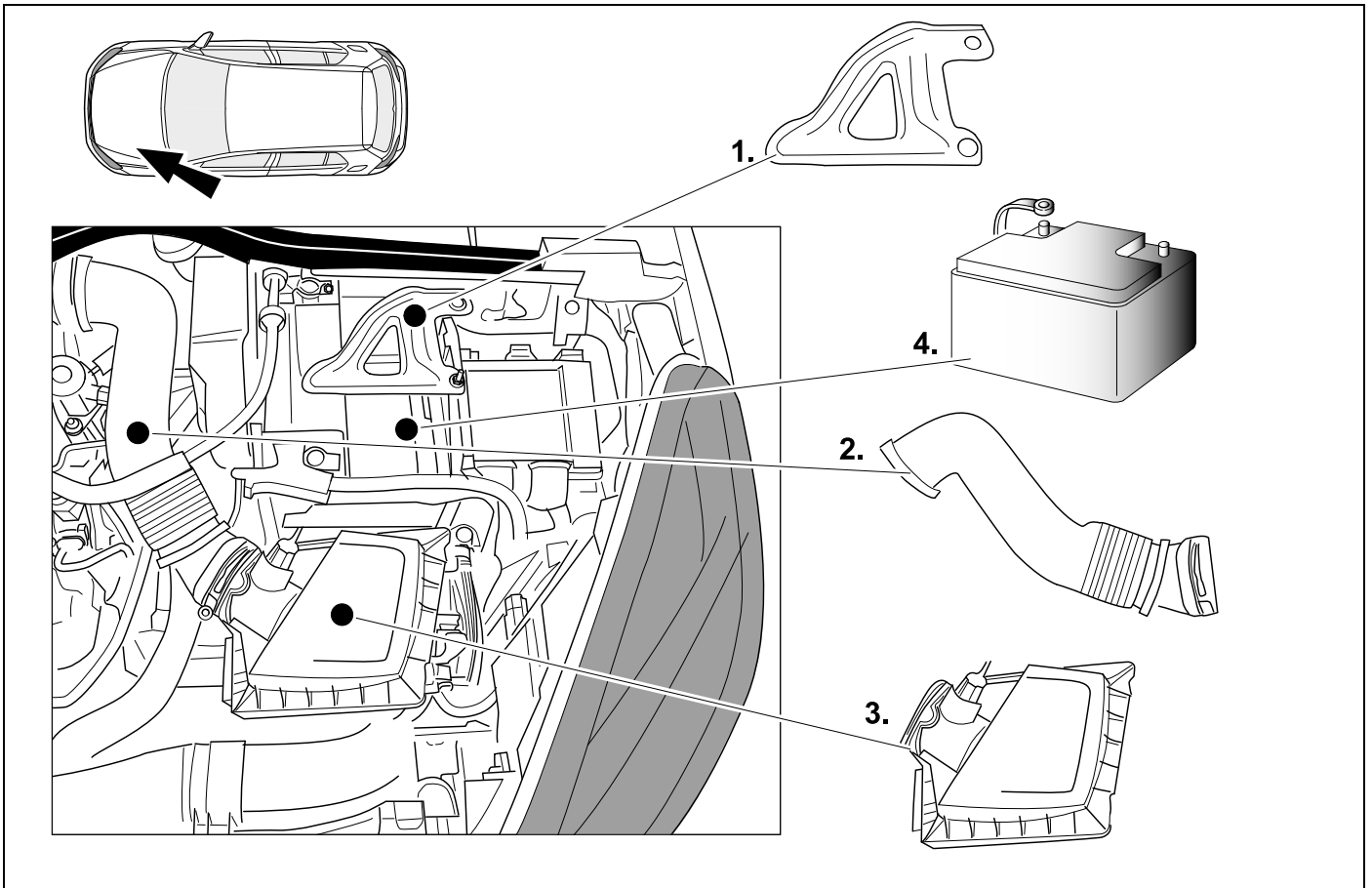


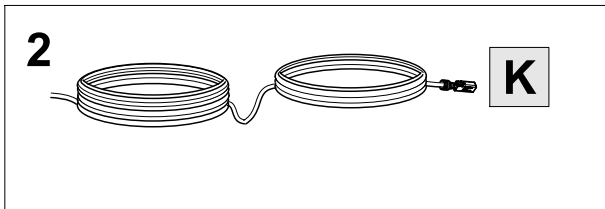
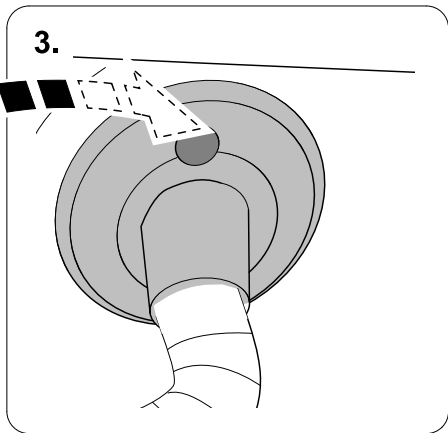
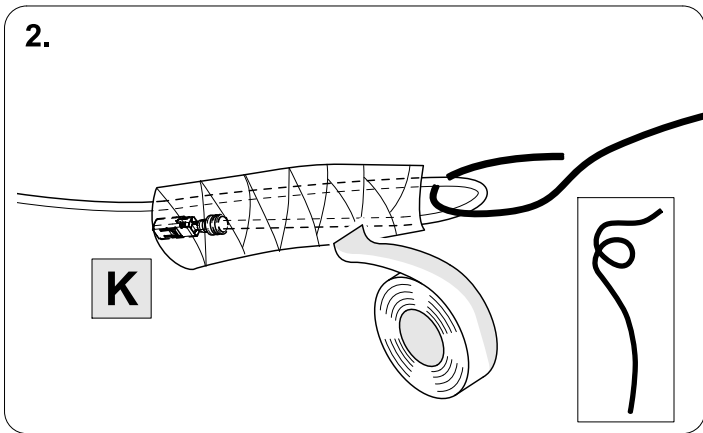
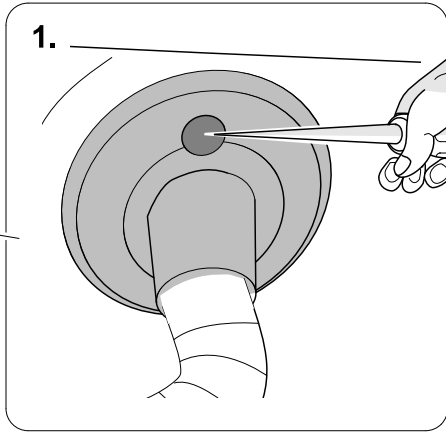
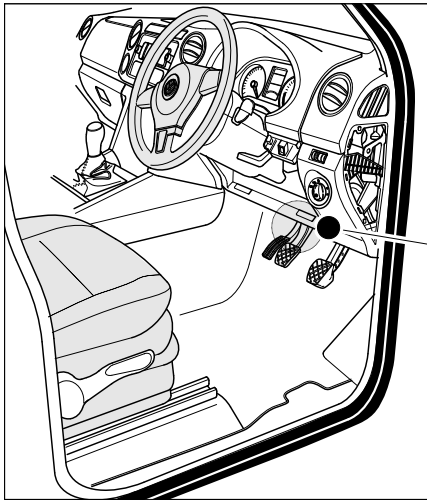
gy-or **L**

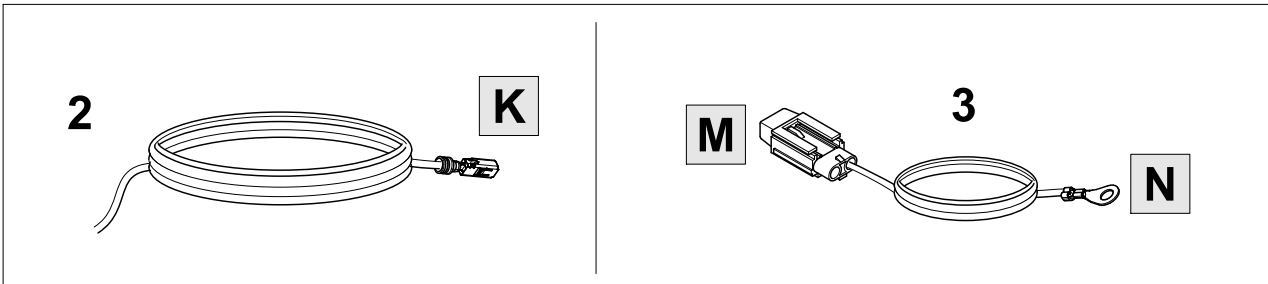
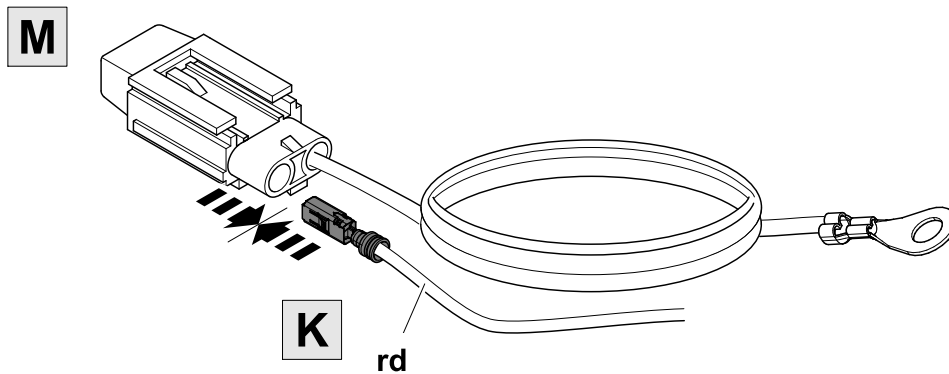
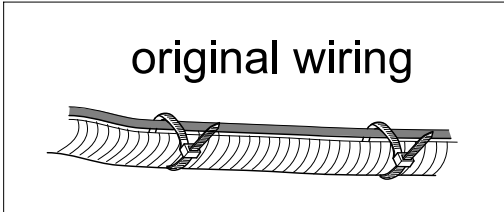
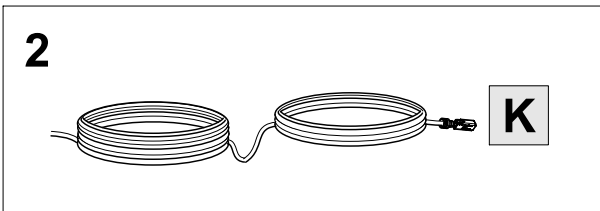
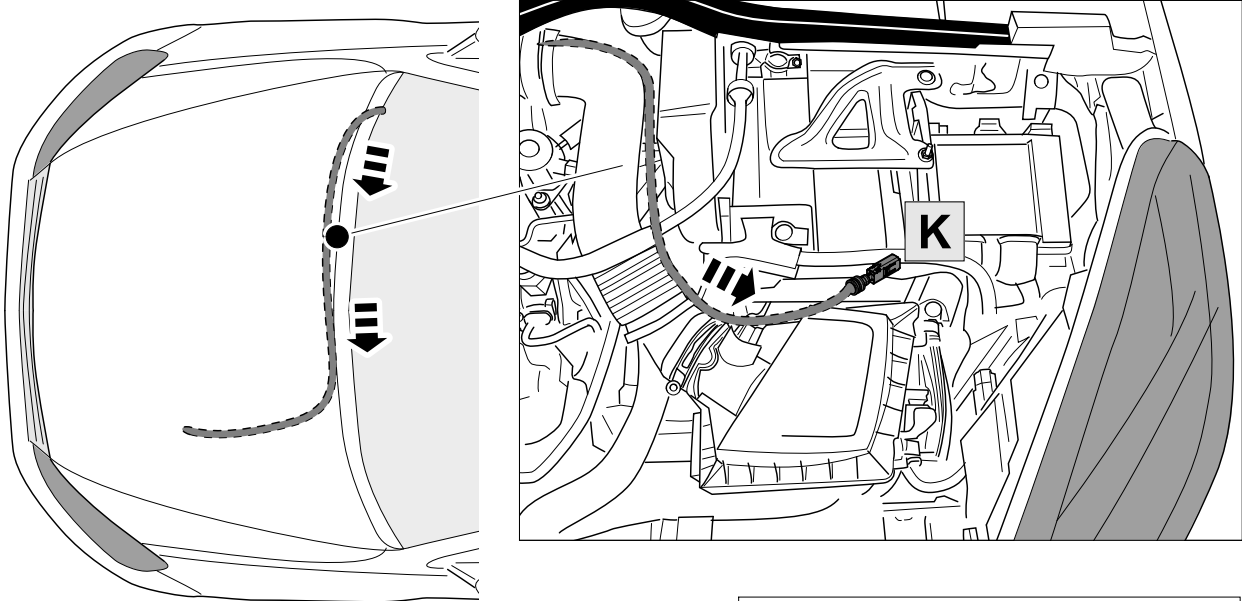


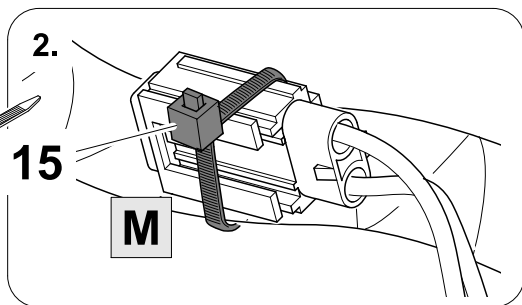
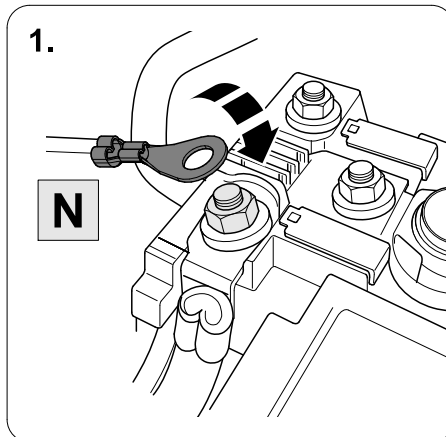
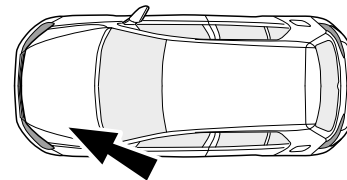
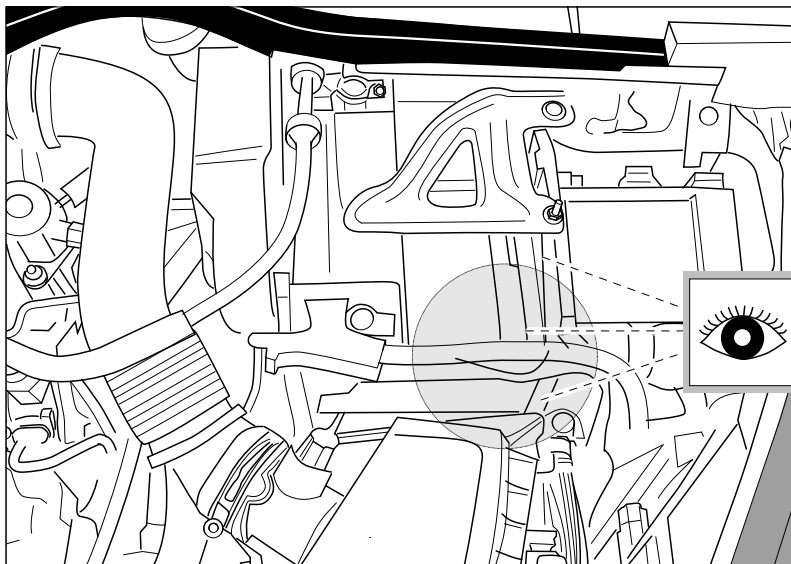
27 REMOVE

OPTION 3

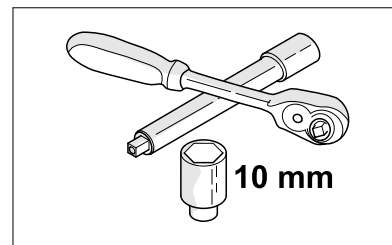
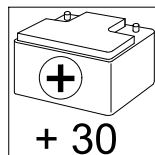






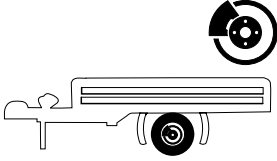


Hot all times!

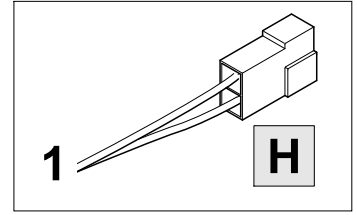




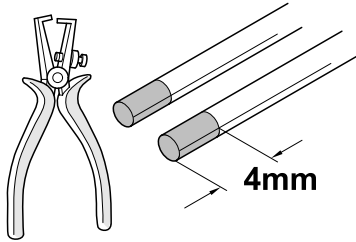
**BRAKE
CONTROLLER
PREPARED**



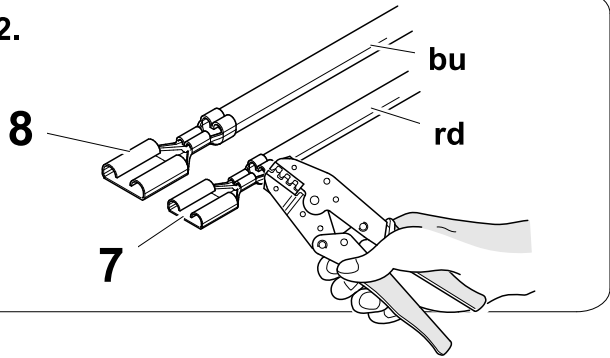
Trailer Brake Preparation



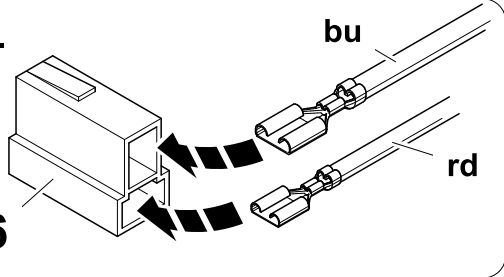
1.



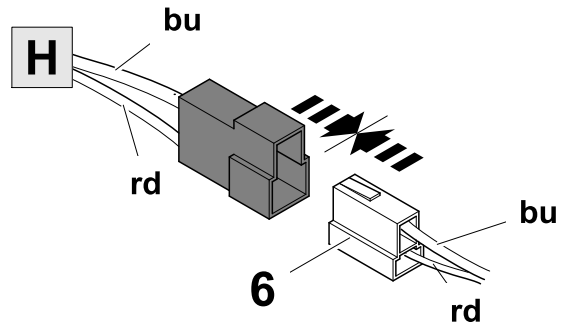
2.



3.



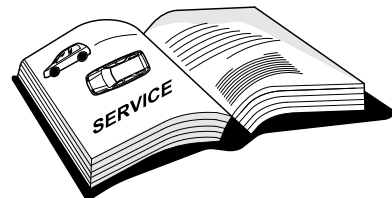
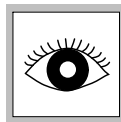
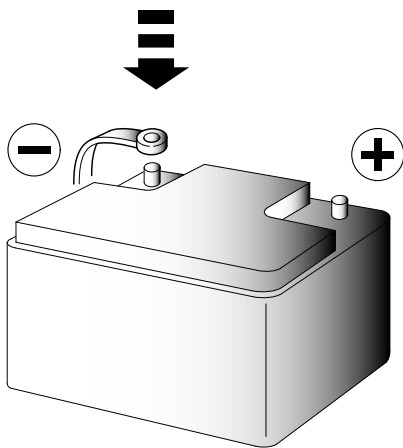
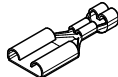
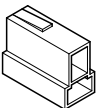
4.



6

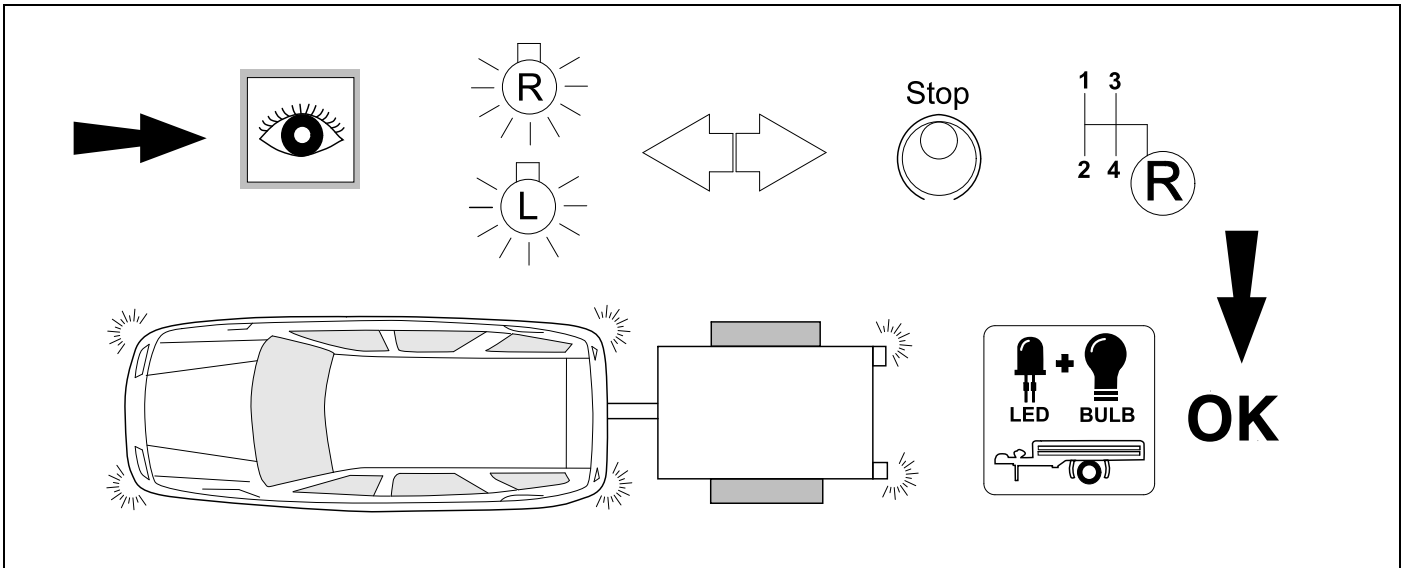
7

8



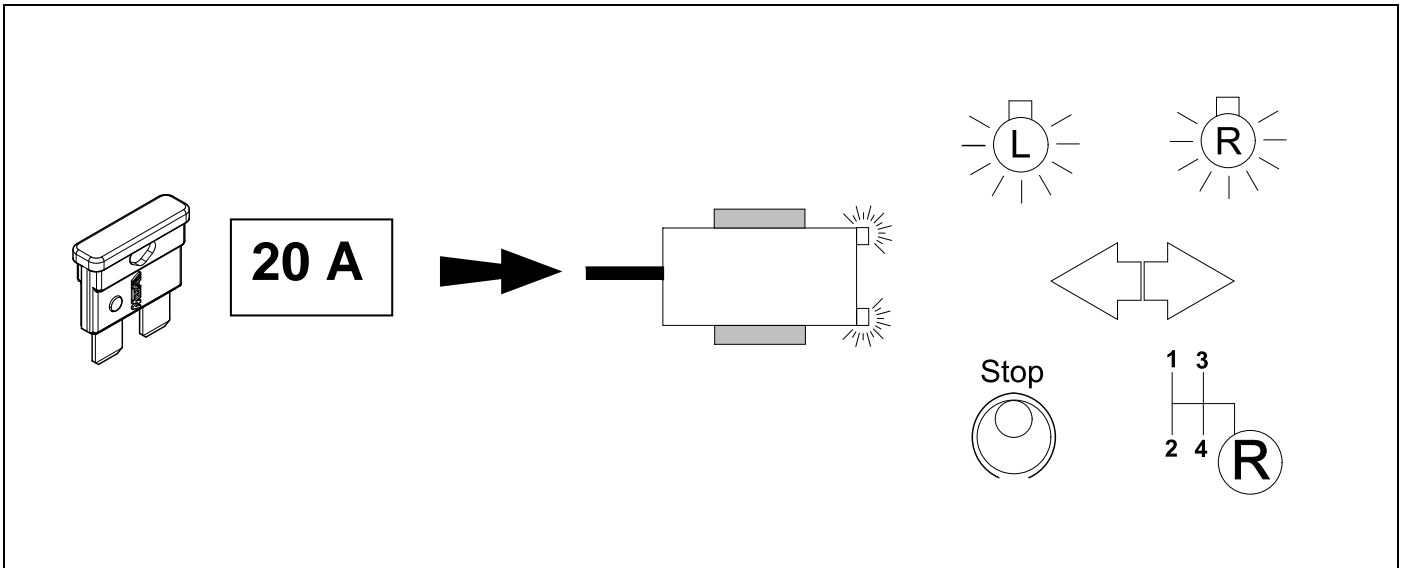
34

CHECK ALL LIGHTING FUNCTIONS



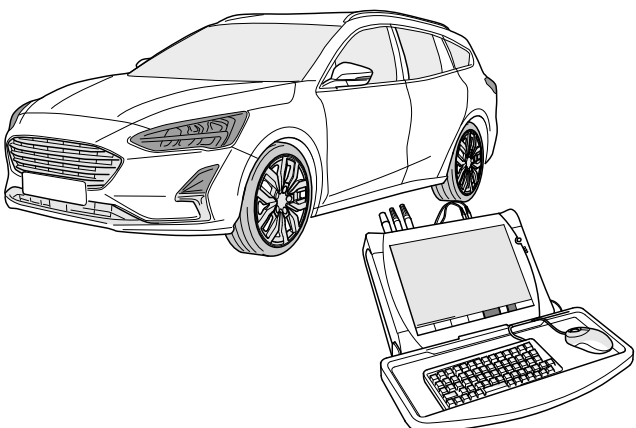
35

👁️ ⇒ 13 23 31



36

VEHICLE CODING

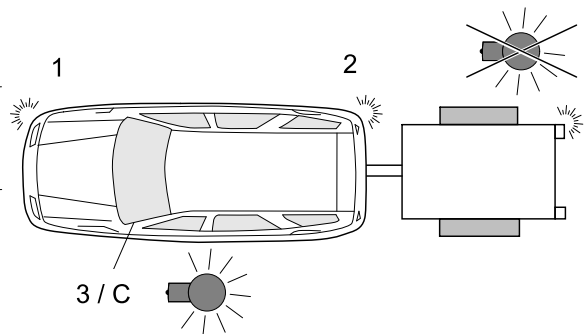
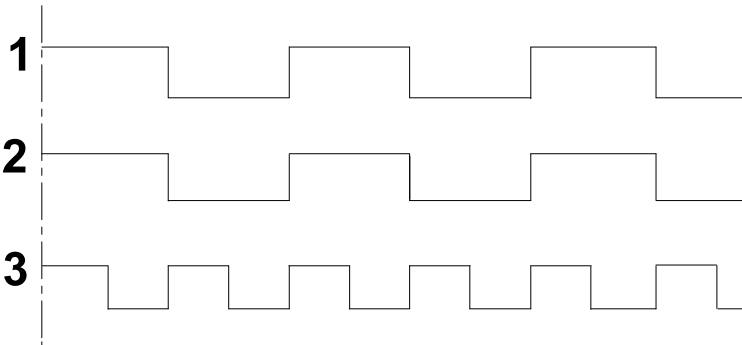


- . **Connect with FordEtis**
- . **Dealer registration**
- . **Vehicle: enter VIN**
- . **Vehicle software**
- . **Changes and Upgrades**
- . **Configuration of towbar**

37

CHECK BULB OUT DETECTION

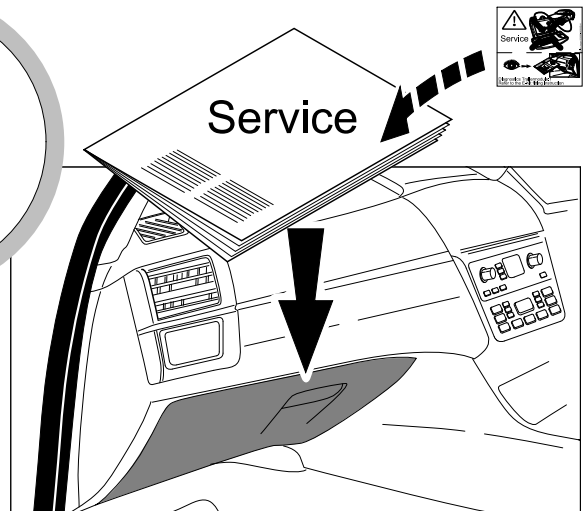
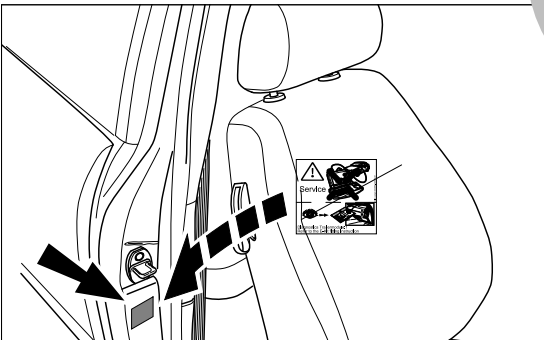
BULB OUT CONDITION INDICATED WITH INCREASED INDICATOR FREQUENCY



38

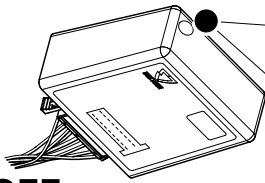
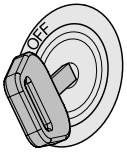


2x 13



Status LED for self-diagnosis

Operation support



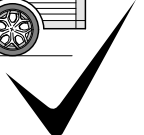
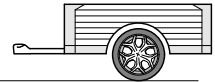
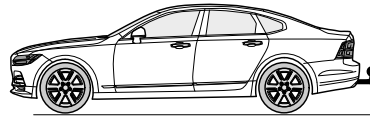
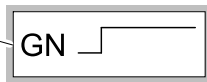
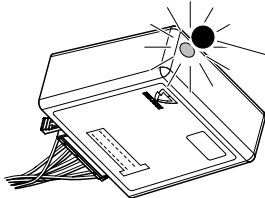
No CAN-Data =



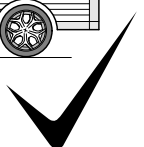
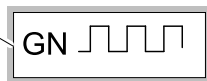
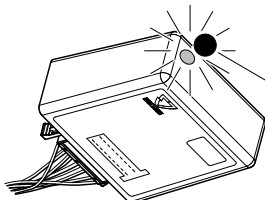
Standby / Sleepmode



Ignition OFF



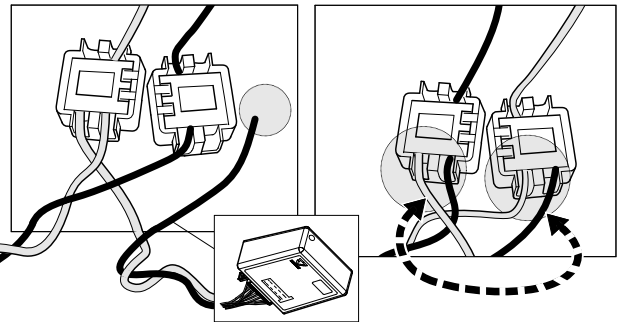
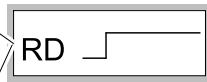
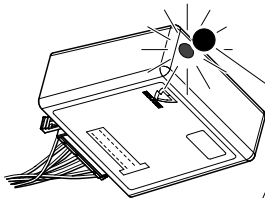
Ignition ON



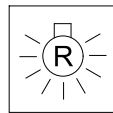
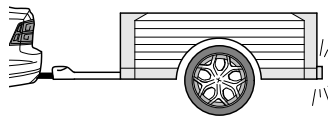
Ignition ON

Failure support

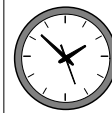
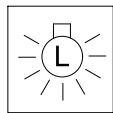
Check CAN-Data Wire



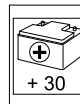
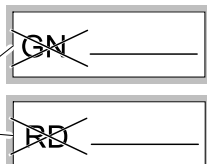
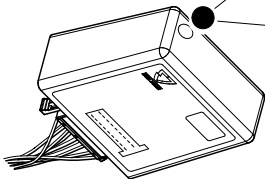
Ignition ON



+

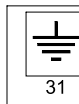


1x max 5 min.



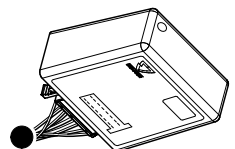
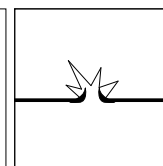
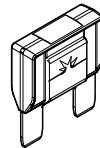
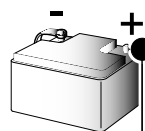
PIN 17

oder / or

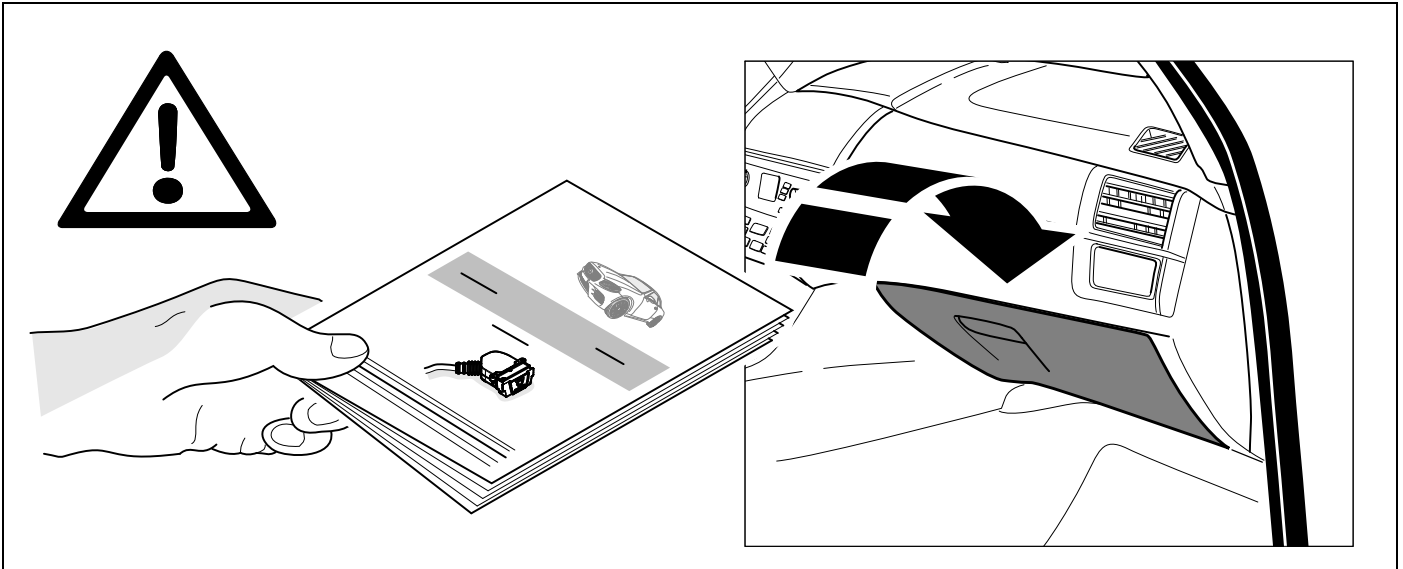


PIN 1

31



Ignition ON



Subject to change in terms of construction, equipment and colour, and may contain errors.

The information and illustrations are non-binding.