



Tow bar Fitting Instructions

To Suit Mitsubishi CJ Lancer GS, SX, VRX & GT Sedan and Sports Back 10-08-on
Part Number CL80L

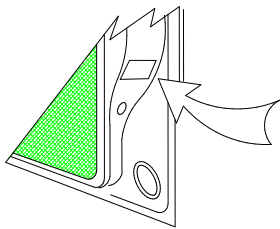
Rating 1000 kg Max Static Ball Load 100Kg

WARNING:

1. Do not, drill, cut, weld or otherwise modify the tow bar.
2. If you are using electric welding on a motor vehicle, **always** check that the vehicle is not equipped with electronic engine or instrument management equipment. Failure to do so could **destroy** any onboard computers. If in doubt, check with the vehicle's manufacturer.

General:

1. Ensure all hardware items have been included
2. It is recommended that the instructions are read through and completely understood before making any attempt to fit this product.
3. Be wary of any changes to vehicle designs or other accessories that may conflict with the installation of this product.
4. Before drilling ensure that the area is clear of fuel, electrical & other components.
5. All holes drilled into the body panels shall have all burrs & swarf removed then coated with a suitable rust preventative paint.
6. The high tensile fasteners supplied with this product were used to achieve the specified rating. If replacement is required ensure that fasteners of the same rating & quality are used. Contact an authorized **Trailboss** dealer if further information is required.
7. Ensure that all hardware is fastened to torque list below check fasteners on regular basis.
8. Tow bar load rating sticker provided with this product shall be conspicuously located on inside rear end of the driver's door. **(See diagram below).**
9. Trailboss recommends that you check your tow ball to ensure that it complies with the Australian standards **AS 4177.2**.
10. **PLEASE NOTE:** It is advised to remove your lug or tbn when not actually towing so as to produce a clear view of the vehicles registration plate if obscured, and to also provide maximum available departure angle



Place load rating sticker
inside driver's door here

FOR TOWING PURPOSES ONLY

For towing capacity details please refer to vehicle owner's manual or to the manufacturer. Overloading can void your warranties.

RECOMMENDED ASSEMBLY TORQUE LISTING

<u>Diameter</u>	<u>Grade 8.8 Bolt</u>
M6	9.5 Nm
M8	21.7 Nm
M10	43.4 Nm
M12	77.3 Nm
M16	189.8 Nm

Tow bar Maintenance and Care.

Trailboss recommends that bolt torque's, as listed below, are routinely and regularly inspected and checked for correct tension. Replace any worn or defective parts.

We recommended to remove Tow Ball Mounts (TBM's, tongues or lugs) when not being used for any considerable length of time.

So as to avoid injury, when not towing it is suggested that the tongue, Pull Pin and R-clip are removed then stored in a safe, clean and dry place, away from excessive moisture.

Hitch Pull Pins and spring "R" clips are regularly checked for proper installation. Replace any worn or defective parts.

Tow bar Fitting Instructions

To Suit Mitsubishi CJ Lancer GS, SX, VRX & GT Sedan and Sports Back 10-08-on
Part Number CL80L

Rating 1000 kg Max Static Ball Load 100Kg

11. Fitment of tow bar to vehicle sub frame via

- a. Offer tow bar to vehicle sub frame so that holes in side tabs align with M10 captive nuts in underside of vehicle chassis see fig 1.
- b. Fit loosely the M10 x 25 x 1.25P bolts supplied through slots in the tow bar into the captive nuts located on the under side of the chassis rails.
- c. Align horizontal holes in side plates with the captive bushes on the horizontal face of the vehicle chassis rails see fig 1.
- d. Feed M12 x 110 bolts with flat & spring washers as shown in diagram below through outer face of chassis rails in four places ensuring that a flat washer is placed on the inner face of the head of the bolt.
- e. Fasten all bolts to the torque listing.
- f. Fit tow bar tongue part number 7514 to the tow bar via the two M16 x 45 bolts & spring washers provided.

Fig 1



Removal of the bumper bar is not required for fitment of the product no cutting of the bumper is required either.

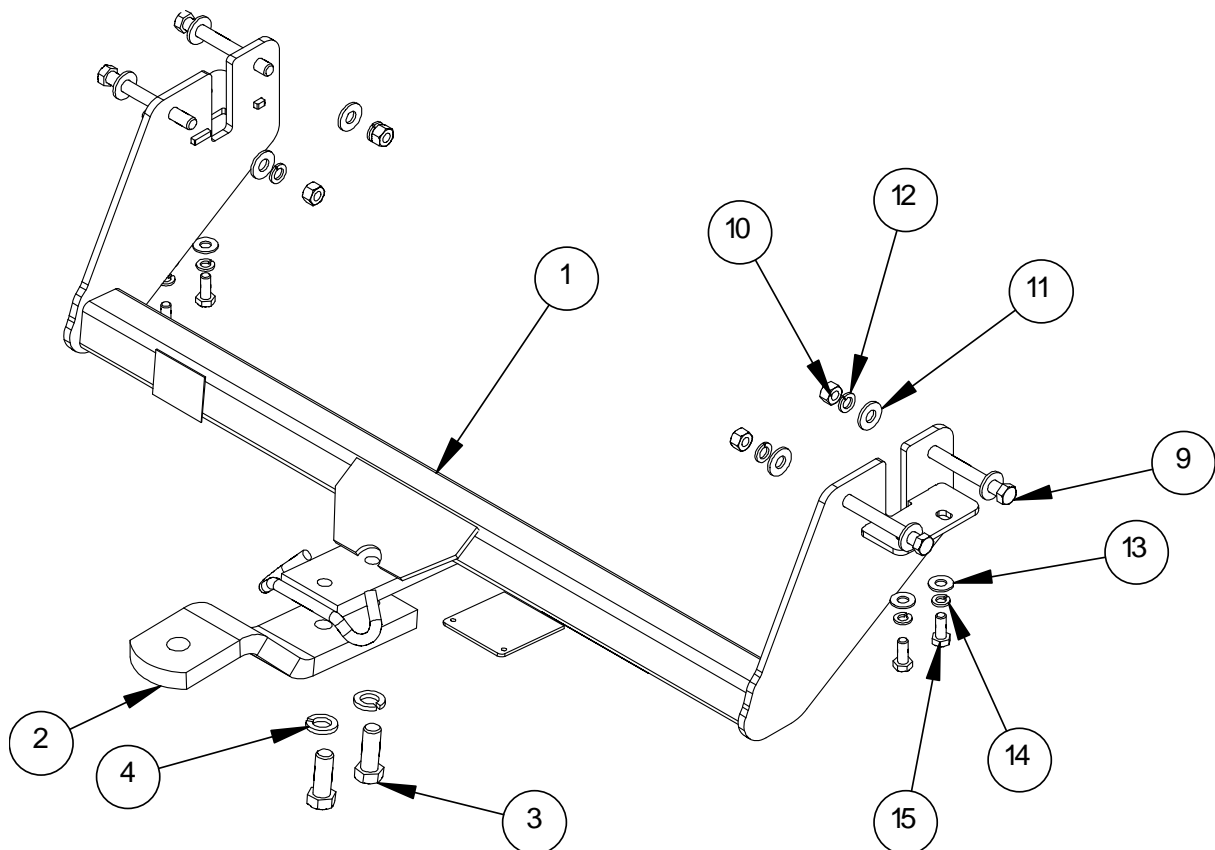
TRAILBOSS

Tow bar Fitting Instructions

To Suit Mitsubishi CJ Lancer GS, SX, VRX & GT Sedan and Sports Back 10-08-on
Part Number CL80L

Rating 1000 kg Max Static Ball Load 100Kg

LOCATION	QTY.	DESCRIPTION	ITEM NO.
ASSEMBLY	1	WELDED ASSEMBLY - MITSUBISHI LANCER	1
ASSEMBLY	1	LUG 7514	2
ASSEMBLY	2	M16 x 45 2.0P BOLT	3
ASSEMBLY	2	M16 X 5 X 3.5 SPRING WASHER	4
ASSEMBLY	1	CP - TB CL80	5
BOLT PACK	1	ASSEMBLY BOLT PACK	6
BOLT PACK	1	PLASTIC SHEET BAG	7
BOLT PACK	1	FITTING INSTRUCTIONS	8
BOLT PACK	4	M12 x110 bolt	9
BOLT PACK	4	M12-1.75 Z/P HX NUTS	10
BOLT PACK	8	Washer M12x28.8x3	11
BOLT PACK	4	M12 X 4.0 X 2.5 SPRING WASHER	12
BOLT PACK	4	Washer Flat M10 x 23 x 2 z/p	13
BOLT PACK	4	M10 X 3.5 X 2.2 SPRING WSHR	14
BOLT PACK	4	BOLT M10 X 1.25 X 25	15
BOLT PACK	1	LRL - TB CL80	16





Tow bar Fitting Instructions
To Suit Mitsubishi CJ Lancer GS, SX, VRX & GT Sedan and Sports Back 10-08-on
Part Number CL80L
Rating 1000 kg Max Static Ball Load 100Kg

Wiring Loom Installation Instructions

Mitsubishi Lancer
Part No: 100139-WL

Tail Harness Length Require: 1800mm
ECU Required: 04826
RPA Override Switch Part No: 04848 (If Fitted)

Wiring Loom Installation Time: Approx 45 Mins



Tow bar Fitting Instructions

To Suit Mitsubishi CJ Lancer GS, SX, VRX & GT Sedan and Sports Back 10-08-on
Part Number CL80L

Rating 1000 kg Max Static Ball Load 100Kg

1. Remove the rear sun shade.
2. Remove the rear passenger seat.
3. Remove the fastener holding down the LHS luggage compartment trim.
4. Remove the tool trays by removing their fasteners.
5. Remove the luggage compartment rear trim.
6. Remove the LHS luggage compartment upper trims by removing its fasteners. Remove the LHS luggage compartment trims by removing its fasteners.
7. Using a Ø30mm hole saw, drill into the LHS luggage compartment area. Deburr any sharp edges and spray anti-rust inhibitor.
8. Mount the Trailer socket onto the towbar mounting bracket using M4 fasteners.
9. From underneath the vehicle, route the Tail Harness (tail length 1800mm) into the vehicle. Slide the grommet to the desired position and then cable tie inside the vehicle.
10. At the LHS luggage compartment area above the wheel arch, disconnect the 24-way brown and white connectors.
11. **Disengage the 24-way WHITE connector secondary lock by doing the following:**
Using a small, flat blade screwdriver, disengage the lock on both sides of the connector. Slide the secondary lock downwards on both sides until the front and back locks are exposed. Unlatch the front and back locks and remove the connector secondary lock.

WARNING: When disengaging the secondary lock, be careful to not allow the wires to dislodge from their locations.

12. Connect the Trailer Patch Harness terminal RED wire into the 24-way WHITE Power Harness female connector above the brown wire. Reconnect the 24-way WHITE connector.
13. Patch the Trailer Patch Harness connectors (P/No:100139-P) in between the vehicle brown connectors.
14. Connect the Harness ECU connector to the ECU (P/No: 04826). Secure the ECU into place using cable ties or double sided tape.
15. Connect the Trailer Patch Harness 8-way female connector to the Tail harness male connector. Secure the Trailer Patch Harness ring terminal to the vehicle grounding point.
16. In the engine bay locate the 1-way grey connector and remove the blanking plug.
17. Connect the Power Harness (P/no: 100139-PH) female connector to the vehicle male connector and route the harness along the vehicle harness and connect it to the positive battery terminal.
18. Test the Trailer socket using a light board or multi-meter.
19. Secure the all harnesses using cables ties.



Tow bar Fitting Instructions

To Suit Mitsubishi CJ Lancer GS, SX, VRX & GT Sedan and Sports Back 10-08-on
Part Number CL80L

Rating 1000 kg Max Static Ball Load 100Kg

20. Refit all removed parts and secure all fasteners.
21. Place instructions in glove box after fitment.