



Towbar Fitting Instructions
To Suit NISSAN PULSAR HATCH C12 SERIES
Part Number DS102L
Rating 1200/120 kg

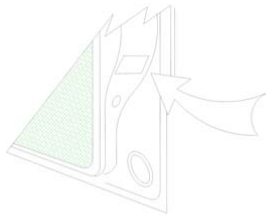
PLACE THESE INSTRUCTIONS IN THE VEHICLE'S GLOVEBOX AFTER INSTALLATION IS COMPLETED

WARNING:

1. Do not, drill, cut, weld or otherwise modify the tow bar.
2. If you are using electric welding on a motor vehicle, **always** check that the vehicle is not equipped with electronic engine or instrument management equipment. Failure to do so could **destroy** any onboard computers. If in doubt, check with the vehicle's manufacturer.
3. The high tensile fasteners supplied with this product were used to achieve the specified rating. If replacement is required ensure that fasteners of the same rating & quality are used. Contact an authorised **Trailboss** dealer if further information is required.
4. If TBM is used in inverted position tow ball may make contact with rear tailgate when lowered, which could cause damage.

General:

1. Ensure all hardware items have been included refer to assembly diagram.
2. It is recommended that the instructions are read through and completely understood before making any attempt to fit this product.
3. Be wary of any changes to vehicle designs or other accessories that may conflict with the installation of this product.
4. Before drilling ensure that the area is clear of fuel, electrical & other components.
5. All holes drilled into the body panels shall have all burrs & swarf removed then coated with a suitable rust preventative paint.
6. For vehicles that require the bumper to be cut. Ensure cut out area is in correct position on the vehicle prior to cutting the bumper.
7. The high tensile fasteners supplied with this product were used to achieve the specified rating. If replacement is required ensure that fasteners of the same rating & quality are used. Contact an authorized **Trailboss** dealer if further information is required.
8. Ensure that all hardware is fastened to torque list below check fasteners on regular basis.
9. Tow bar load rating sticker provided with this product shall be conspicuously located on inside rear end of the driver's door. **(See diagram below).**
10. Trailboss recommends that you check your tow ball to ensure that it complies with the Australian standards **AS 4177.2.**
11. **PLEASE NOTE:** It is advised to remove your lug or tbm when not actually towing so as to produce a clear view of the vehicles registration plate if obscured, and to also provide maximum available departure angle
12. Pull Pin must be fit in down position.



Place load rating sticker
inside driver's door here

FOR TRAILER TOWING PURPOSES ONLY
 For towing capacity details please refer to vehicle owner's manual or to the manufacturer. Overloading can void your warranties.

RECOMMENDED ASSEMBLY TORQUE LISTING

Diameter	Grade 8.8 Bolt
M6	9.5 Nm
M8	21.7 Nm
M10	43.4 Nm
M12	77.3Nm
M14	146 Nm
M16	189.8 Nm

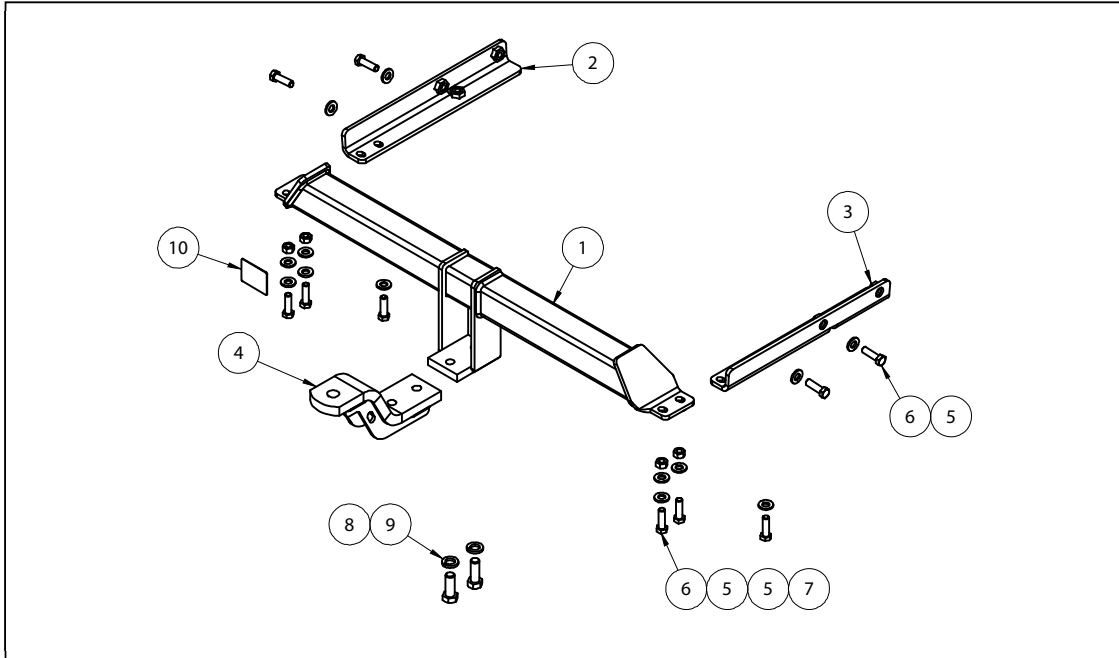
Tow bar Maintenance and Care.

Trailboss recommends that bolt torque's, as listed below, are routinely and regularly inspected and checked for correct tension. Replace any worn or defective parts.
 We recommended to remove Tow Ball Mounts (TBM's, tongues or lugs) when not being used for any considerable length of time.
 So as to avoid injury, when not towing it is suggested that the tongue, Pull Pin and R-clip are removed then stored in a safe, clean and dry place, away from excessive moisture.
 Hitch Pull Pins and spring "R" clips are regularly checked for proper installation. Replace any worn or defective parts.

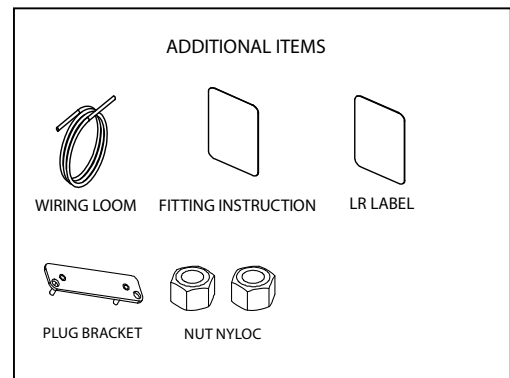
TRAILBOSS

Towbar Fitting Instructions
 To Suit NISSAN PULSAR HATCH C12 SERIES
 Part Number DS102L
 Rating 1200/120 kg

PLACE THESE INSTRUCTIONS IN THE VEHICLE'S GLOVEBOX AFTER INSTALLATION IS COMPLETED



QTY	DESCRIPTION	ITEM NO
1	WELDED ASSEMBLY	1
1	CHASSIS INSERT LHS	2
1	CHASSIS INSERT RHS	3
1	LUG ASSY	4
14	WASHER FLAT 1/2"X1 1/8"X1/8"	5
10	BOLT M12-1.25X40 GR 8.8 BLK ZN	6
4	HEX NUT PC8 M12X1.25	7
2	BOLT M16X45 2.0P	8
2	SPRING WASHER M16X5X3.5	9
1	ACRYLIC COMPLIANCE PLATE	10





Towbar Fitting Instructions
To Suit NISSAN PULSAR HATCH C12 SERIES
Part Number DS102L
Rating 1200/120 kg

PLACE THESE INSTRUCTIONS IN THE VEHICLE'S GLOVEBOX AFTER INSTALLATION IS COMPLETED

INSTRUCTION:

1. On the inside of the guard liner, remove 1 x Screw and 2 x Plastic Trim clips. Repeat for passenger and driver side.
2. Release the rear tail gate to expose the boot. On the inside directly behind the tail lights remove the plastic trim concealing the securing studs. Repeat for Passenger and Drivers side.
3. Remove 2 x Nuts to release the tail lights. Repeat for Passenger and Drivers side.
4. Carefully remove tail lights and disconnect wiring loom. Repeat for Passenger and Drivers side.
5. Remove 1 x Screw and 1 x Plastic Trim clip. Repeat for Passenger and Drivers side.
6. Remove 1 x Screw securing the bottom of the bumper to inner guard liner. Repeat for Passenger and Drivers side.
7. Remove 2 x Plastic Trim clips located on the underside of the bumper.
8. Carefully remove bumper and discard factory impact foam.
9. Discard factory impact beam mounts by removing 2 x Screws. Repeat for Passenger and Drivers side. Cut and remove 2 x Studs in the centre of the back panel.
10. Cut through back panel to expose inner chassis rail mounts. Repeat for both Passenger and Drivers side.
11. Using the chassis plates supplied insert into corresponding chassis rails. Loosely secure with the supplied mounting hardware (M12 x 40 x 1.25P). Repeat for Passenger and Drivers side.
12. Loosely secure the centre of the Towbar with the flange UNDERNEATH the chassis rail mounts. Centre the bar and then torque all fasteners to the torque settings as specified on Page 1.
13. Locate the centre of the bumper and cut approximately 48mm either side of the centre line and 65mm up from the bottom edge of the bumper.
14. Re-attach the bumper by following steps 1-7 in reverse.



Wiring Loom Fitting Instructions
To Suit Nissan Pulsar
Part Number 101272-WL

Wiring Loom Installation Instructions

Nissan Pulsar
Part No: 101272-WL

Tail Harness Length Required: 1200mm

Wiring Loom Installation Time: Approx 20 Mins



Wiring Loom Fitting Instructions
To Suit Nissan Pulsar
Part Number 101272-WL

1. In the luggage compartment, remove the floor carpet cover and the rear trim by removing the two fasteners.
2. Remove the LHS and RHS tool trays by removing the five fasteners.
3. On the LHS luggage compartment trim remove tail light access panel and remove the trim clip.
4. Dislodge enough of the trim to gain access to the tail light and grounding point.

Repeat for the RHS.

5. Route the trailer patch (P/No: 101272-WL) up to the LHS tail light connectors.
6. Disconnect the LHS tail light connectors and patch the trailer patch connectors in between.
7. On the LHS rear quarter, secure the vehicle trailer patch ring terminal to the vehicle grounding point using the vehicle fastener.
8. In the LHS rear quarter, find a suitable location on the floor of the sheet metal and drill a Ø30mm hole. File down any rough edges and apply rust inhibitor.
9. Route the trailer patch connectors across to the RHS tail light connectors.
10. Route the trailer patch (P/No: 101272-WL) up to the RHS tail light connectors.
11. Disconnect the RHS tail light connectors and patch the trailer patch connectors in between.
12. Mount the trailer socket to the tow bar mounting bracket using M4 fasteners (not supplied).
13. Route the tail harness (tail length 1200mm) across the tow bar towards the LHS of the vehicle and up through the vehicle grommet or the previously drilled hole.
14. Ensure the tail harness grommet is seated correctly and secured in place using a cable tie (not supplied).
15. Inside the vehicle, connect the tail harness 8-way connector to the trailer patch 8-way mating connector.
16. Test the trailer harness function using a Light Board or multimeter.
17. Secure all harnesses using cables ties (not supplied).
18. Re-fit all removed parts and secure all fasteners, ensuring there are no squeaks or rattles.
19. Place the instructions in the glove box after fitment.