



Towbar Fitting Instructions
To Suit DAIHATSU PYZAR 97-0N
DAIHATSU CHARADE 4 DOOR SEDAN 6/93-ON
Part Number DU24A
Rating PYSAR 97-on = 1000Kg
CHARADE 93-on = 700Kg

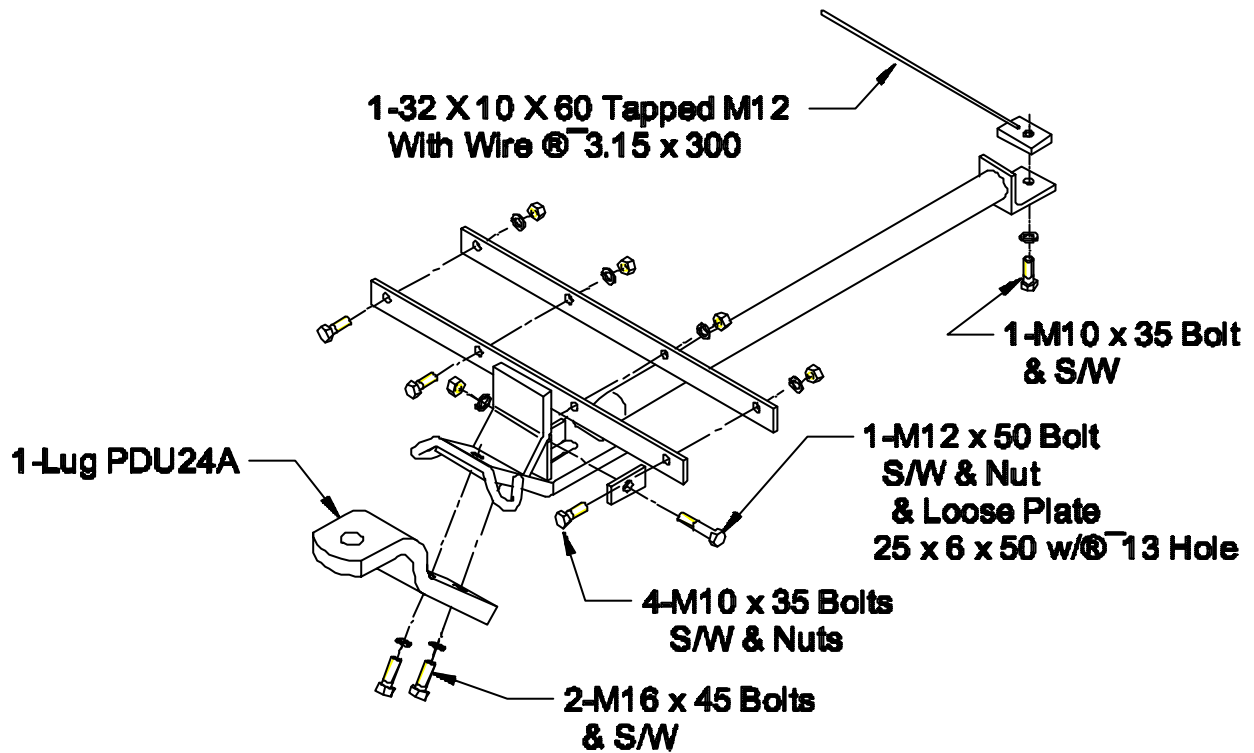
1. Ensure all hardware items have been included.
2. Remove bumper bar. Refer to sketch for bumper cut out. (Charade Sedan only)
3. Lift towbar up into position so shipping hook protrudes through centre section of towbar and rear mounting holes sit flush against rear panel just below rib in panel as per sketch.
4. Support with jack.
5. Ensure towbar is square to vehicle.
6. Drill four 11mm holes through rear panel.
7. Fit bolts, loose plate spring washer and nuts as shown in diagram.
8. Using hole in tail section as a guide, drill an 11mm hole in cross member.
9. Insert tapped plate through cross member and fit bolt and spring washer.
10. Fit bolt spring washer loose plate and nut through shipping hook.
11. Tighten all bolts to torque listing below.
12. Refit bumper bar.

RECOMMENDED ASSEMBLY TORQUE LISTING

<u>Diameter</u>	<u>Grade 8.8 Bolt</u>
	<u>Nm</u>
M6	9.5
M8	21.7
M10	43.4
M12	77.3
M14	121.0
M16	189.8

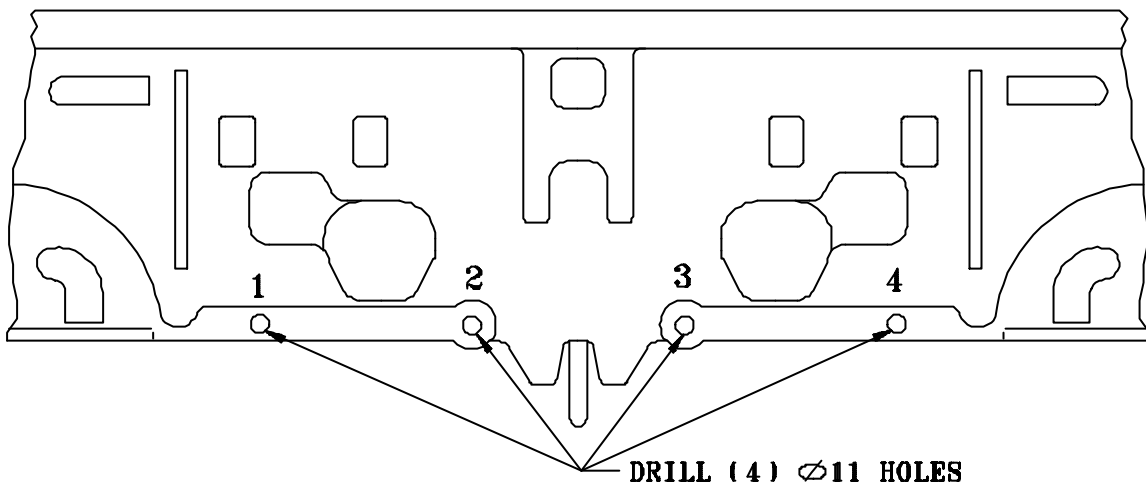
TRAILBOSS

Towbar Fitting Instructions
To Suit DAIHATSU PYZAR 97-0N
DAIHATSU CHARADE 4 DOOR SEDAN 6/93-ON
Part Number DU24A
Rating PYSAR 97-on = 1000Kg
CHARADE 93-on = 700Kg



Towbar Fitting Instructions
To Suit DAIHATSU PYZAR 97-0N
DAIHATSU CHARADE 4 DOOR SEDAN 6/93-ON
Part Number DU24A
Rating PYSAR 97-on = 1000Kg
CHARADE 93-on = 700Kg

DAIHATSU PYZAR / CHARADE 4 D'R SEDAN



Daihatsu Charade Four Door Sedan
Rear Bumper Cut Out Diagram

