



Towbar Fitting Instructions
To Suit FORD FOCUS 3/5 DOOR HATCH
Part Number FD120
Rating 800Kg

1. Ensure all hardware items have been included.
2. Remove rear bumper bar via: -
 - a. 2 x M10 nuts from inner guards.
 - b. 4 x plastic trim buttons from top centre of bumper bar, and.
 - c. 2 x plastic trim buttons from the underside of the bumper bar.
3. Remove and discard impact beam.
4. Unhook exhaust from 2 rearmost rubber mounts.
5. Remove heat shield via 5 retaining nuts.
6. Fit towbar and tighten 4 x M10 bolts to specified torque as listed below.
7. Make cut-out in bumper according to diagram.
8. Refit heat shield, exhaust system and rear bumper bar.

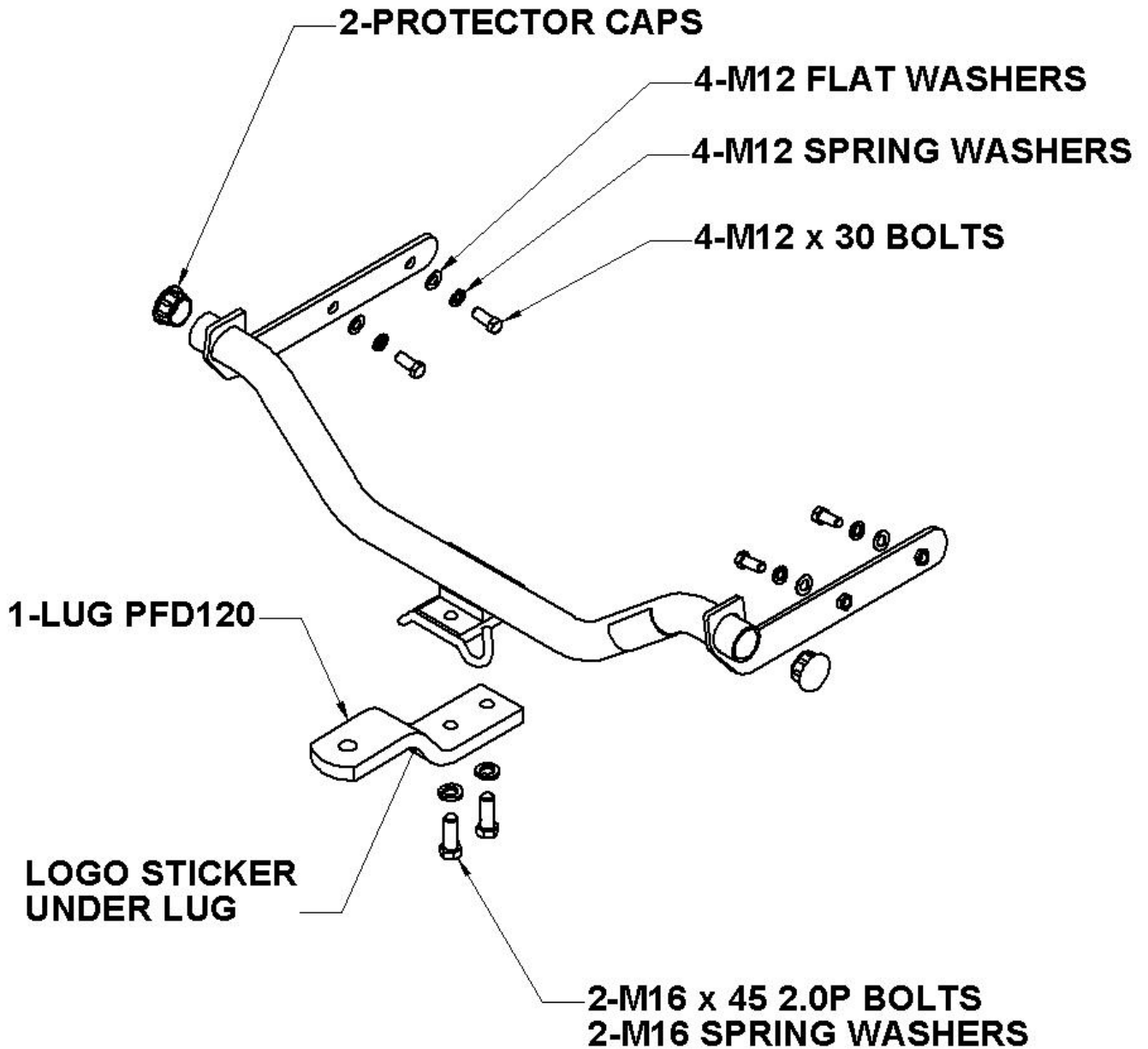
Comments:

Bottom tags may have to be pulled rearward slightly.

RECOMMENDED ASSEMBLY TORQUE LISTING

<u>Diameter</u>	<u>Grade 8.8 Bolt</u>
	Nm
M6	9.5
M8	21.7
M10	43.4
M12	77.3
M14	121.0
M16	189.8

Towbar Fitting Instructions
To Suit FORD FOCUS 3/5 DOOR HATCH
Part Number FD120
Rating 800Kg



Towbar Fitting Instructions
To Suit FORD FOCUS 3/5 DOOR HATCH
Part Number FD120
Rating 800Kg

