



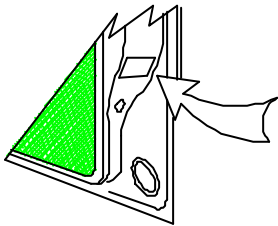
Towbar Fitting Instructions
To Suit FORD FALCON UTE AU,BA,BF & FG (TUB BODY) ONLY
Part Number FD128
Rating 1600 kg

WARNING:

1. Do not, drill, cut, weld or otherwise modify the tow bar.
2. If you are using electric welding on a motor vehicle, **always** check that the vehicle is not equipped with electronic engine or instrument management equipment. Failure to do so could **destroy** any onboard computers. If in doubt, check with the vehicle's manufacturer.

General:

1. Ensure all hardware items have been included refer to assembly diagram.
2. It is recommended that the instructions are read through and completely understood before making any attempt to fit this product.
3. Be wary of any changes to vehicle designs or other accessories that may conflict with the installation of this product.
4. Before drilling ensure that the area is clear of fuel, electrical & other components.
5. All holes drilled into the body panels shall have all burrs & swarf removed then coated with a suitable rust preventative paint.
6. The high tensile fasteners supplied with this product were used to achieve the specified rating. If replacement is required ensure that fasteners of the same rating & quality are used. Contact an authorized **Trailboss** dealer if further information is required.
7. Ensure that all hardware is fastened to torque list below check fasteners on regular basis.
8. Tow bar load rating sticker provided with this product shall be conspicuously located on inside rear end of the driver's door. **(See diagram below).**
9. Trailboss recommends that you check your tow ball to ensure that it complies with the Australian standards **AS 4177.2**.
10. **PLEASE NOTE:** It is advised to remove your lug or tbn when not actually towing so as to produce a clear view of the vehicles registration plate if obscured, and to also provide maximum available departure angle



Place load rating sticker inside driver's door here

FOR TOWING PURPOSES ONLY
For towing capacity details please refer to vehicle owner's manual or to the manufacturer. Overloading can void your warranties.

RECOMMENDED ASSEMBLY TORQUE LISTING
Diameter Grade 8.8 Bolt

M6	9.5 Nm
M8	21.7 Nm
M10	43.4 Nm
M12	77.3 Nm
M16	189.8 Nm

Tow bar Maintenance and Care.

Trailboss recommends that bolt torque's, as listed below, are routinely and regularly inspected and checked for correct tension. Replace any worn or defective parts.

We recommended to remove Tow Ball Mounts (TBM's, tongues or lugs) when not being used for any considerable length of time.

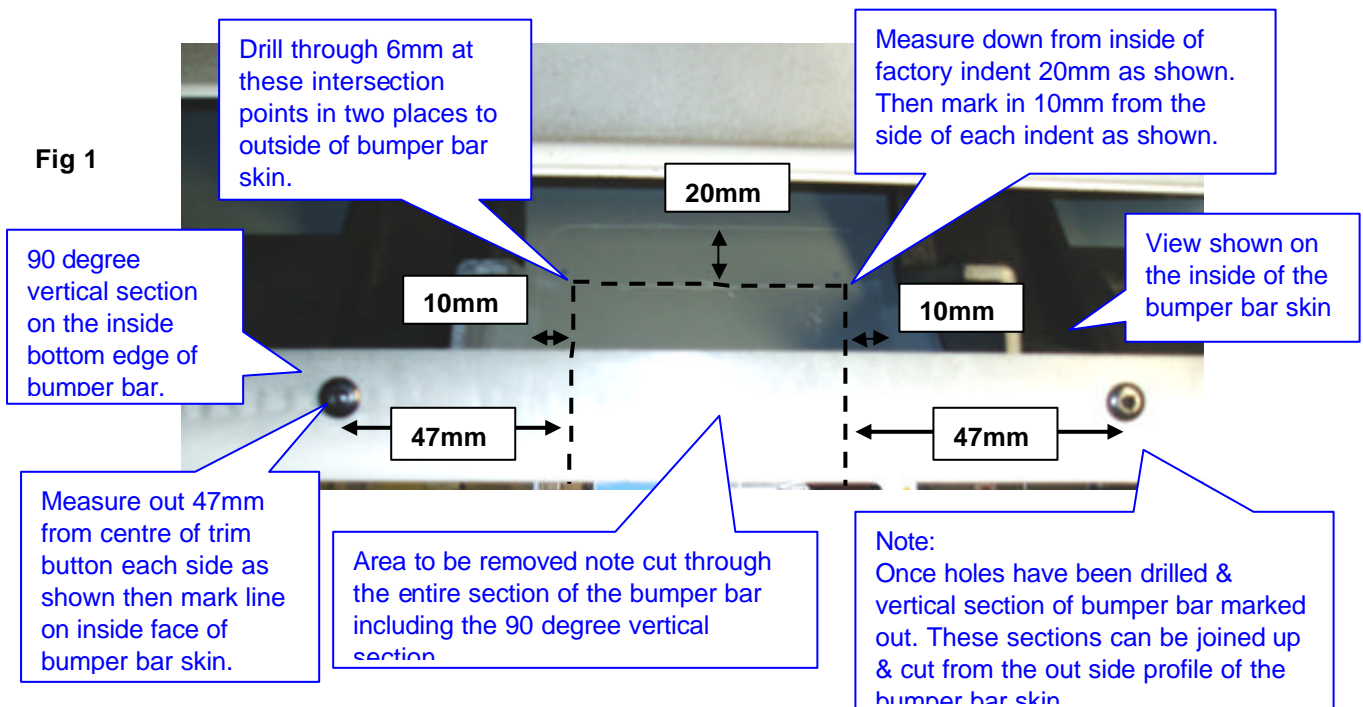
So as to avoid injury, when not towing it is suggested that the tongue, Pull Pin and R-clip are removed then stored in a safe, clean and dry place, away from excessive moisture.

Hitch Pull Pins and spring "R" clips are regularly checked for proper installation. Replace any worn or defective parts.

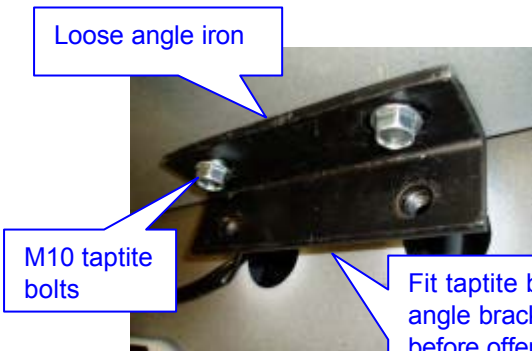
Towbar Fitting Instructions To Suit FORD FALCON UTE AU,BA,BF & FG (TUB BODY) ONLY Part Number FD128 Rating 1600 kg

11. Fitment of towbar to vehicle via

- Remove spare wheel if fitted some models may not have the wheel fitted.
- Mark out the inside of the bumper bar skin as shown in fig 1 note that **bumper cut is required for the FG Falcon ute only** AU through to BF models no cut is required.
- Place masking tape on the out side profile & underside of bumper bar profile before drilling.
- Fit loose angle bracket to the underside of rear cross member using the two M10 x 30 taptite bolts supplied semi tight as shown in fig 2.
- Lift towbar into position so that holes in side arms align with horizontal existing holes in the chassis rails see fig 3.
- Then fit M12 X 100 bolts & loose plates through chassis rails and towbar loosely see fig 3.
- Fit two M10 x 30 bolts through angle iron into loose angle iron see fig 4.
- Fit four M10 X 30 taptite bolts through towbar and into the vertical holes in the underside of the chassis rails.
- Ensure that towbar is central to the cut out before tightening.
- Tighten all bolts to the torque listing.
- Refit the spare wheel.



Towbar Fitting Instructions
 To Suit FORD FALCON UTE AU,BA,BF & FG (TUB BODY) ONLY
 Part Number FD128
 Rating 1600 kg



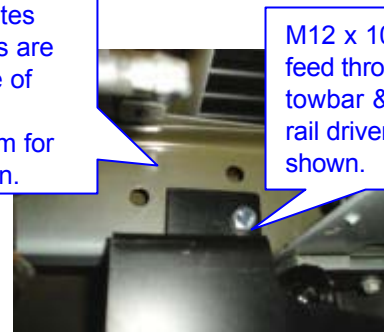
Loose angle iron

M10 taptite bolts

Fig 2

Ensure that loose plates spring washers & nuts are fitted to the outer side of chassis rails. See assembly diagram for correct part orientation.

Fit taptite bolts & loose angle bracket loosely first before offering the bar to vehicle chassis, or you will not be able to drive in the taptite bolts



M12 x 100 bolts feed through towbar & chassis rail drivers' side shown.

Fig 3

12. Fitment of towbar to vehicle via

- a. Fit lug part number 7660 to towbar with 2 X M16 x 45 bolts & spring washers supplied see assembly diagram for correct component orientation.
- b. Fit 2 x M10 D shackles to chain connection points on the lug assembly

