



Towbar Fitting Instructions  
To Suit HYUNDAI SANTA FE 2001 – 04/2006  
Part Number HY19A  
Rating 1800Kg

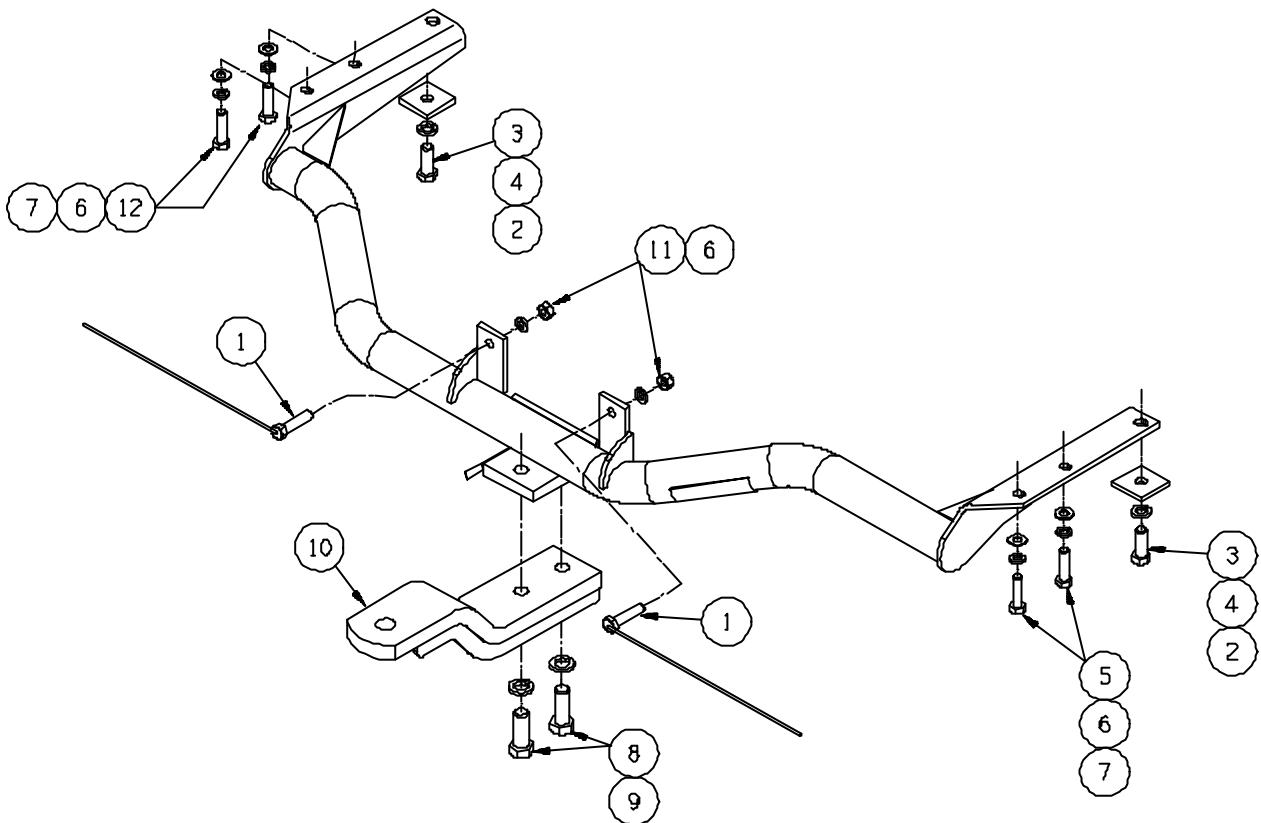
1. Remove shipping hooks.
2. Remove and discard centre bumper support tabs.
3. Lower spare wheel.
4. Refer to diagram for bumper cut out.
5. Remove rear exhaust hangers.
6. Lift towbar up into position, aligning holes in towbar side plates with captive nuts in chassis.
7. Fit bolts and loose plates as per drawing, (refit shipping hook on drivers side).
8. Using holes in centre cross tube mounting tabs as a guide, drill Ø11 holes through impact beam and feed bolts on wires through access holes.
9. Tighten all bolts to torque listing below.
10. Refit exhaust hangers.
11. Refit spare wheel.
12. Attach the tongue ( item 10 ) to the towbar using ( items 8 & 9 ). Torque the bolts to the correct setting.

**COMPONENT KIT**

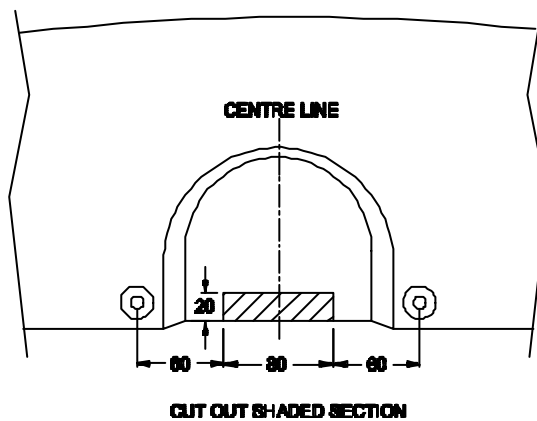
<b>ITEM No.</b>	<b>DESCRIPTION</b>	<b>QTY</b>	<b>TORQUE Nm</b>
1	M10 x 45 BOLT WITH 300MM LONG WIRE	2	44
2	FITTING PLATE 45 x 6 x 45 Ø13 Hole	2	
3	M12 x 35 - 1.25P BOLT	2	77
4	M12 SPRING WASHER	2	
5	M10 x 40 - 1.25P BOLT	2	44
6	M10 SPRING WASHER	6	
7	M10 FLAT WASHER	4	
8	M16 x 45 - 2.0P BOLT	*2	190
9	M16 SPRING WASHER	*2	
10	TONGUE PHY19A – (7405Q)	1	
11	M10 x 1.5P NUT	2	44
12	M10 x 30 - 1.25P BOLT	2	44

Note: \* One of each item 8 and 9 is used to secure the tongue to the towbar during transit.

Towbar Fitting Instructions  
To Suit HYUNDAI SANTA FE 2001 – 04/2006  
Part Number HY19A  
Rating 1800Kg



REAR BUMPER CUTOUT DIAGRAM



CUT OUT SHADED SECTION