

TRAILBOSS

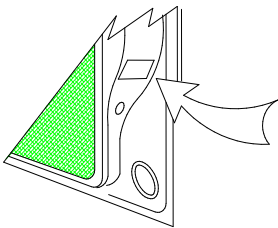
Towbar Fitting Instructions To Suit MAZDA 3 DEDAN on Part Number MA81L 04/09-ON Rating 900-75 kg

WARNING:

1. Do not, drill, cut, weld or otherwise modify the tow bar.
2. If you are using electric welding on a motor vehicle, **always** check that the vehicle is not equipped with electronic engine or instrument management equipment. Failure to do so could **destroy** any onboard computers. If in doubt, check with the vehicle's manufacturer.

General:

1. Ensure all hardware items have been included refer to assembly diagram.
2. It is recommended that the instructions are read through and completely understood before making any attempt to fit this product.
3. Be wary of any changes to vehicle designs or other accessories that may conflict with the installation of this product.
4. Before drilling ensure that the area is clear of fuel, electrical & other components.
5. All holes drilled into the body panels shall have all burrs & swarf removed then coated with a suitable rust preventative paint.
6. For vehicles that require the bumper to be cut. Ensure cut out area is in correct position on the vehicle prior to cutting the bumper.
7. The high tensile fasteners supplied with this product were used to achieve the specified rating. If replacement is required ensure that fasteners of the same rating & quality are used. Contact an authorized **Trailboss** dealer if further information is required.
8. Ensure that all hardware is fastened to torque list below check fasteners on regular basis.
9. Tow bar load rating sticker provided with this product shall be conspicuously located on inside rear end of the driver's door. **(See diagram below).**
10. Trailboss recommends that you check your tow ball to ensure that it complies with the Australian standards **AS 4177.2.**
11. **PLEASE NOTE:** It is advised to remove your lug or tbn when not actually towing so as to produce a clear view of the vehicles registration plate if obscured, and to also provide maximum available departure angle



Place load rating sticker
inside driver's door here

FOR TOWING PURPOSES ONLY

For towing capacity details please refer to vehicle owner's manual or to the manufacturer. Overloading can void your warranties.

RECOMMENDED ASSEMBLY TORQUE LISTING

Diameter Grade 8.8 Bolt

M6	9.5 Nm
M8	21.7 Nm
M10	43.4 Nm
M12	77.3Nm
M14	146 Nm
M16	189.8 Nm

Tow bar Maintenance and Care.

Trailboss recommends that bolt torque's, as listed below, are routinely and regularly inspected and checked for correct tension. Replace any worn or defective parts.

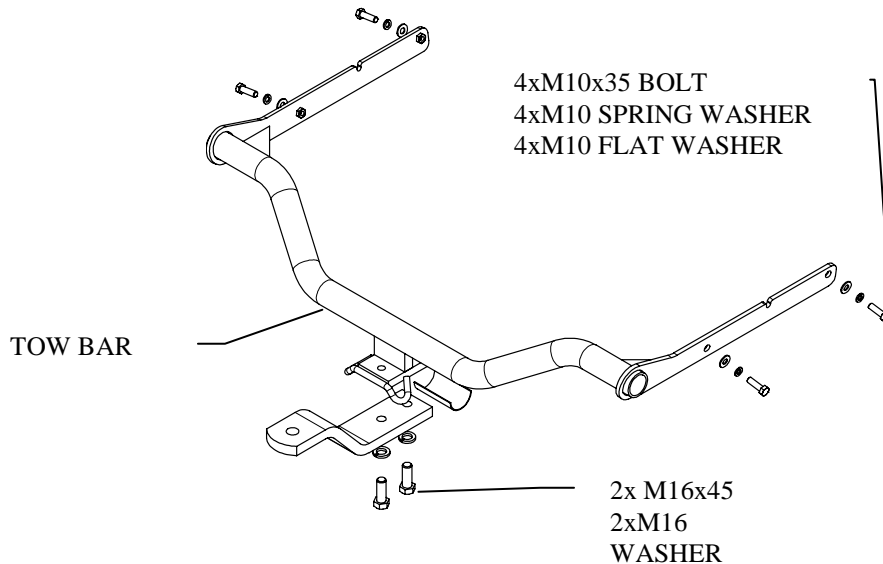
We recommended to remove Tow Ball Mounts (TBM's, tongues or lugs) when not being used for any considerable length of time.

So as to avoid injury, when not towing it is suggested that the tongue, Pull Pin and R-clip are removed then stored in a safe, clean and dry place, away from excessive moisture.

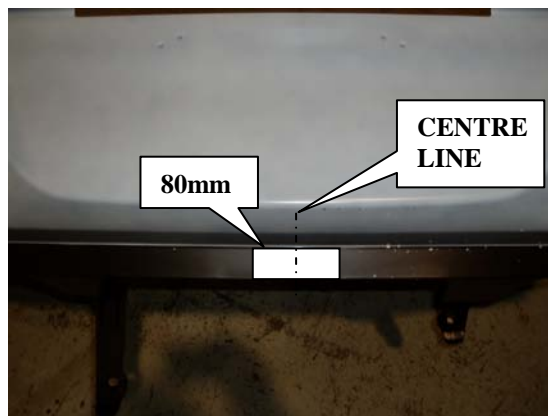
Hitch Pull Pins and spring "R" clips are regularly checked for proper installation. Replace any worn or defective parts.

TRAILBOSS

Towbar Fitting Instructions
To Suit **MAZDA 3 DEDAN** on
Part Number **MA81L 04/09-ON**
Rating **900-75 kg**



1. Remove skrivet inside wheel arch to gain access to vertical screw holding bumper edge on both side
2. Remove bottom screws under the bumper, two in the middle, and one at corner on both sides
3. Remove plastic liner cover via two skrivets on each end and lift it out.
4. Remove tail light assembly via three nuts holding the assembly be hide liner.
5. Remove one skrivet and one screw from inside tail light cavity on both sides.
6. Remover bumper skin via pulling by spreading it out to the right and left sides.
7. Disconnect any wiring to the bumper skin
8. Remove impact beam via eight nuts and discard.
9. Insert tow bar into chassis rail of the vehicle, use supplied M10x35 bolt, spring washer, and flat washer to secure tow bar via existing holes (may get cover by factory tape). Torque all bolt to specification.
10. For duel exhausts model, establish centre line and trim 80mm wide from bottom lip of the bumper skin for lug clearance. No cutting require for single exhaust.
11. Refit the bumper skin in reverse order from step 7.





Wiring Loom Fitting Instructions
To Suit Mazda3 Sedan
Part Number 100164-WL

Wiring Loom Installation Instructions

**Mazda3 Sedan
Part No: 100164-WL**

**Tail Harness Length Required: 1800mm
RPA Override Switch Part No: 04848 (If Fitted)**

Wiring Loom Installation Time: Approx 20 Mins



Wiring Loom Fitting Instructions
To Suit Mazda3 Sedan
Part Number 100164-WL

1. Remove all the required trims to gain access to the LHS and RHS tail light connectors.
2. Remove the LHS rear quarter grommet.
3. On the outside rear of the vehicle, secure the Tail Harness socket (Tail length 1800mm) to the towbar mounting plate using M4 fasteners (not supplied).
4. Route the Tail Harness along the towbar and then underneath the vehicle towards the LHS rear quarter grommet and secure with Tail Harness to towbar with cable ties (not supplied).
5. Inside the vehicle, disconnect the RHS tail light connectors and patch the Trailer Patch Harness (Part No: 100164-WL) connectors in between.
6. Route the Trailer Harness along the rear sheet metal towards the LHS tail light area.
7. Disconnect the LHS tail light connectors and patch the Trailer Patch Harness (Part No. 100164-WL) connectors in between.
8. Secure the ground ring terminal on the LHS tail light stud or use a tech (not supplied) screw straight through the sheet metal inner skin at a safe and suitable location.
9. Disconnect the LHS 14-way reverse connectors located above the wheel arch area and patch the Trailer Patch Harness 14-way male and female connectors in between.
10. Adjust the Tail Harness grommet ensuring it is seated correctly. Once in place, secure the Tail Harness grommet using cable ties (not supplied).
11. Connect the Tail Patch Harness to the Trailer Harness.
12. Test the Trailer socket using a light board or multi-meter.
13. Secure the all harnesses using cables ties (not supplied).
14. Refit all removed parts and secure all fasteners.
15. Place instructions in glove box after fitment.