

# TRAILBOSS

## Towbar Fitting Instructions To Suit **MAZDA 2 DJ SERIES** Part Number **MA87L** Rating **900/90 kg**

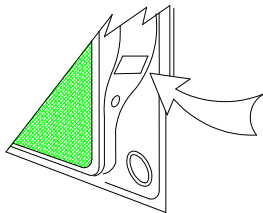
PLACE THESE INSTRUCTIONS IN THE VEHICLE'S GLOVEBOX AFTER INSTALLATION IS COMPLETED

### **WARNING:**

1. Do not, drill, cut, weld or otherwise modify the tow bar.
2. If you are using electric welding on a motor vehicle, **always** check that the vehicle is not equipped with electronic engine or instrument management equipment. Failure to do so could **destroy** any onboard computers. If in doubt, check with the vehicle's manufacturer.
3. The high tensile fasteners supplied with this product were used to achieve the specified rating. If replacement is required ensure that fasteners of the same rating & quality are used. Contact an authorised **Trailboss** dealer if further information is required.
4. If TBM is used in inverted position tow ball may make contact with rear tailgate when lowered, which could cause damage.

### **General:**

1. Ensure all hardware items have been included refer to assembly diagram.
2. It is recommended that the instructions are read through and completely understood before making any attempt to fit this product.
3. Be wary of any changes to vehicle designs or other accessories that may conflict with the installation of this product.
4. Before drilling ensure that the area is clear of fuel, electrical & other components.
5. All holes drilled into the body panels shall have all burrs & swarf removed then coated with a suitable rust preventative paint.
6. For vehicles that require the bumper to be cut. Ensure cut out area is in correct position on the vehicle prior to cutting the bumper.
7. The high tensile fasteners supplied with this product were used to achieve the specified rating. If replacement is required ensure that fasteners of the same rating & quality are used. Contact an authorized **Trailboss** dealer if further information is required.
8. Ensure that all hardware is fastened to torque list below check fasteners on regular basis.
9. Tow bar load rating sticker provided with this product shall be conspicuously located on inside rear end of the driver's door. **(See diagram below).**
10. Trailboss recommends that you check your tow ball to ensure that it complies with the Australian standards **AS 4177.2**.
11. **PLEASE NOTE:** It is advised to remove your lug or tbm when not actually towing so as to produce a clear view of the vehicles registration plate if obscured, and to also provide maximum available departure angle
12. Pull Pin must be fit in down position.



Place load rating sticker  
inside driver's door here

**FOR TRAILER TOWING PURPOSES ONLY**  
For towing capacity details please refer to vehicle owner's manual or to the manufacturer. Overloading can void your warranties.

### **RECOMMENDED ASSEMBLY TORQUE LISTING**

Diameter	Grade 8.8 Bolt
M6	9.5 Nm
M8	21.7 Nm
M10	43.4 Nm
M12	77.3Nm
M14	146 Nm
M16	189.8 Nm

### **Tow bar Maintenance and Care.**

Trailboss recommends that bolt torque's, as listed below, are routinely and regularly inspected and checked for correct tension. Replace any worn or defective parts.

We recommended to remove Tow Ball Mounts (TBM's, tongues or lugs) when not being used for any considerable length of time.

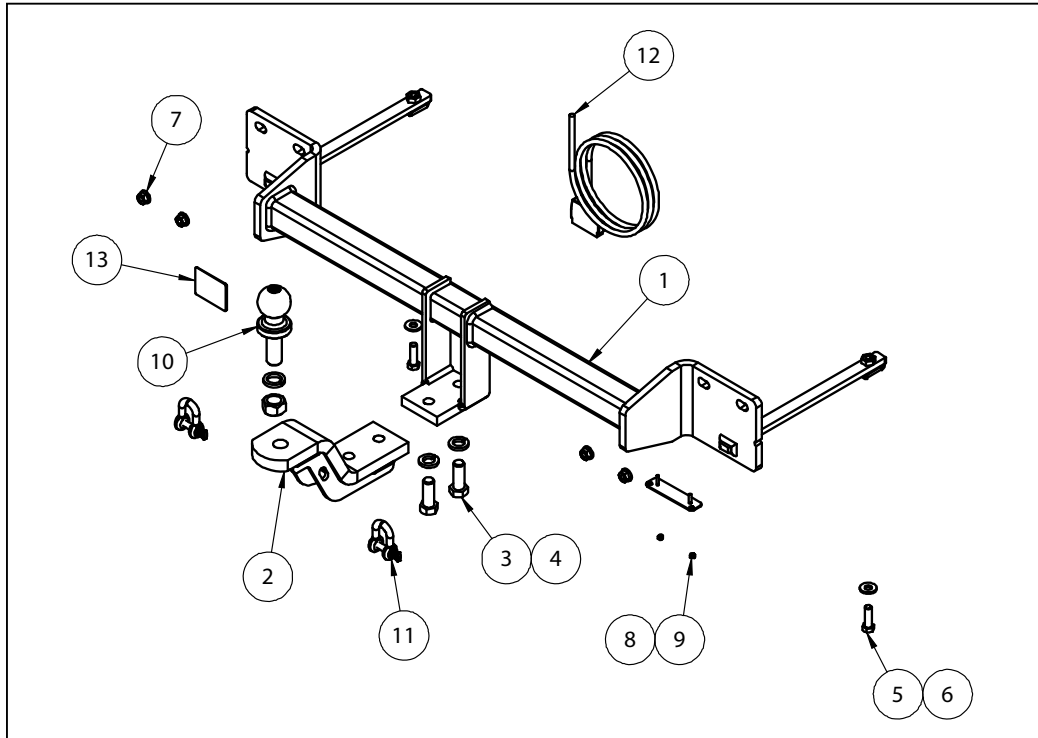
So as to avoid injury, when not towing it is suggested that the tongue, Pull Pin and R-clip are removed then stored in a safe, clean and dry place, away from excessive moisture.

Hitch Pull Pins and spring "R" clips are regularly checked for proper installation. Replace any worn or defective parts.

# TRAILBOSS

Towbar Fitting Instructions  
 To Suit **MAZDA 2 DJ SERIES**  
 Part Number **MA87L**  
 Rating **900/90 kg**

PLACE THESE INSTRUCTIONS IN THE VEHICLE'S GLOVEBOX AFTER INSTALLATION IS COMPLETED



QTY.	DESCRIPTION	ITEM NO.
1	MAZDA 2 WELDED ASSY	1
1	LUG ASSY	2
2	BOLT M16x45 2.0P	3
2	SPRING WASHER M16x5x3.5	4
2	SET SCREW M10-1.5x35mm	5
2	WASHER FT M10x25.4x3	6
4	FLANGE NUT M10x1.25P	7
1	PLUG BRACKET	8
2	NUT NYLOC M4-0.7 Z/P	9
1	50mm TOWBALL	10
2	10mm "D" SHACKLE	11
1	WIRING LOOM	12
1	ACRYLIC COMPLIANCE PLATE	13



Towbar Fitting Instructions  
To Suit **MAZDA 2 DJ SERIES**  
Part Number **MA87L**  
Rating **900/90 kg**

PLACE THESE INSTRUCTIONS IN THE VEHICLE'S GLOVEBOX AFTER INSTALLATION IS COMPLETED

**INSTRUCTION:**

1. Open the rear hatch to expose the boot space. Remove 8 x Screws, securing both tail lights and the rear bumper. Carefully remove tail lights and disconnect wiring loom.
2. Underneath the Driver's side of the vehicle, remove 2 x Screws and 1 x Trim Clip. Repeat for opposite side.
3. On the inside of the wheel guard liner, remove 2 x Plastic Trim Clips and 2 x Screws. One screw is concealed with a plastic moulding. Carefully peel it back to provide access and remove. Repeat opposite side of vehicle.
4. Carefully remove the bumper by peeling away at the edges and pulling back. Keep aside for re-assembly.  
Remove the impact beam by removing 8 x M10 Flange Nuts. Discard impact beam.
5. At the centre of the back panel, cut the plastic under trim to provide additional clearance for the Towbar. Extend from rear edge to existing cut.
6. Insert Towbar side arm into respective chassis rails. Loosely secure using vertical mounts and back panel mounts.

Torque Vertical Mounts:

M10 x 1.5P: 43.4Nm

Back Panel M10 x 1.25P Flange Nuts: 68Nm

7. On the bumper, locate the centre. Carefully cut 115mm up from the edge of the bumper and 100mm wide (55mm either side of the centre). Make sure you are measuring on the face of the bumper.
8. Mark out and drill 2 x 5MM holes 69mm apart onto bumper skin to support plug bracket. Feed bracket threads through drilled holes prior to reinstalling bumper.
9. Reinstall bumper by following steps 1- 4 in reverse order.



Wiring Loom Fitting Instructions  
To Suit Mazda2  
Part Number 101292-WL

Wiring Loom Installation Instructions

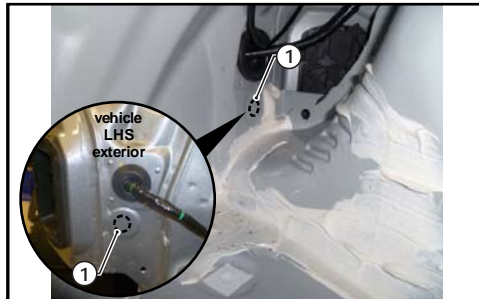
Mazda2  
Part No: 101292-WL

Tail Length Required: 1200mm

Wiring Loom Installation Time: Approx 20 Mins

## Wiring Loom Fitting Instructions To Suit Mazda2 Part Number 101292-WL

1. In the luggage compartment, remove the floor cover carpet, parcel shelf (if fitted) and fold the rear seats forward. Remove the rear trim.
2. Remove the luggage compartment LHS trim. Repeat for the RHS.
3. At the LHS rear quarter area, locate a suitable drilling location in the vehicle sheet metal and drill out a Ø30mm hole (1). Apply rust inhibitor after drilling.



4. Disconnect the LHS tail light connectors and patch the trailer patch harness (P/No:101292-WL) connectors in between.
5. Secure the trailer patch ground ring terminal to the LHS rear quarter vehicle grounding point.
6. Route the trailer patch harness RHS branch across the rear of the vehicle towards the RHS tail light area.
7. At the rear exterior of the vehicle, mount the tail harness socket to the towbar mounting bracket using M4 fasteners (not supplied).
8. Route the tail harness (tail length: 1200mm) across the LHS and up into the drilled out (or existing) grommet hole. Adjust the trailer patch harness grommet so that it is seated correctly and cable tie (not supplied) in place.
9. Connect the tail harness 8-way connector to the trailer patch 8-way mating connector.
10. Test the body harness using a light board or multi-meter.
11. Secure all harnesses using cables ties (not supplied).
12. Re-fit all removed parts and secure all fasteners.
13. Place instructions in glove box after fitment.