

TRAILBOSS

Towbar Fitting Instructions
To Suit **TOYOTA LANDCRUISER PRADO ALTITUDE EDITION**
KDJ150R SERIES 2014 ON
Part Number **QT1126L**
Rating **2500/250 kg**

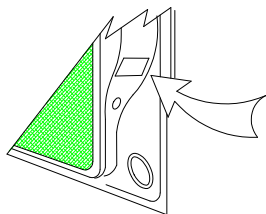
PLACE THESE INSTRUCTIONS IN THE VEHICLE'S GLOVEBOX AFTER INSTALLATION IS COMPLETED

WARNING:

1. Do not, drill, cut, weld or otherwise modify the tow bar.
2. If you are using electric welding on a motor vehicle, **always** check that the vehicle is not equipped with electronic engine or instrument management equipment. Failure to do so could **destroy** any onboard computers. If in doubt, check with the vehicle's manufacturer.
3. The high tensile fasteners supplied with this product were used to achieve the specified rating. If replacement is required ensure that fasteners of the same rating & quality are used. Contact an authorised **Trailboss** dealer if further information is required.
4. If TBM is used in inverted position tow ball may make contact with rear tailgate when lowered, which could cause damage.

General:

1. Ensure all hardware items have been included refer to assembly diagram.
2. It is recommended that the instructions are read through and completely understood before making any attempt to fit this product.
3. Be wary of any changes to vehicle designs or other accessories that may conflict with the installation of this product.
4. Before drilling ensure that the area is clear of fuel, electrical & other components.
5. All holes drilled into the body panels shall have all burrs & swarf removed then coated with a suitable rust preventative paint.
6. For vehicles that require the bumper to be cut. Ensure cut out area is in correct position on the vehicle prior to cutting the bumper.
7. The high tensile fasteners supplied with this product were used to achieve the specified rating. If replacement is required ensure that fasteners of the same rating & quality are used. Contact an authorized **Trailboss** dealer if further information is required.
8. Ensure that all hardware is fastened to torque list below check fasteners on regular basis.
9. Tow bar load rating sticker provided with this product shall be conspicuously located on inside rear end of the driver's door. **(See diagram below).**
10. Trailboss recommends that you check your tow ball to ensure that it complies with the Australian standards **AS 4177.2.**
11. **PLEASE NOTE:** It is advised to remove your lug or tbm when not actually towing so as to produce a clear view of the vehicles registration plate if obscured, and to also provide maximum available departure angle
12. Pull Pin must be fit in down position.



Place load rating sticker
inside driver's door here

FOR TRAILER TOWING PURPOSES ONLY
For towing capacity details please refer to vehicle owner's manual or to the manufacturer. Overloading can void your warranties.

RECOMMENDED ASSEMBLY TORQUE LISTING

Diameter	Grade 8.8 Bolt
M6	9.5 Nm
M8	21.7 Nm
M10	43.4 Nm
M12	77.3Nm
M14	146 Nm
M16	189.8 Nm

Tow bar Maintenance and Care.

Trailboss recommends that bolt torque's, as listed below, are routinely and regularly inspected and checked for correct tension. Replace any worn or defective parts.

We recommended to remove Tow Ball Mounts (TBM's, tongues or lugs) when not being used for any considerable length of time.

So as to avoid injury, when not towing it is suggested that the tongue, Pull Pin and R-clip are removed then stored in a safe, clean and dry place, away from excessive moisture.

Hitch Pull Pins and spring "R" clips are regularly checked for proper installation. Replace any worn or defective parts.

Rev: A

Page 1

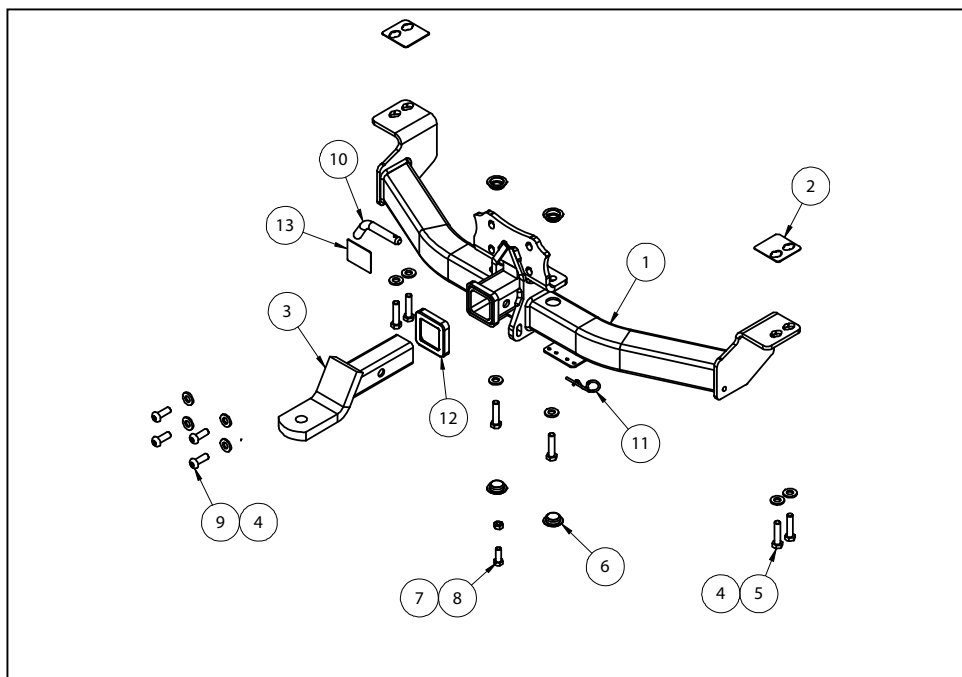
Issue Date: 27-10-2014

Cequent Customer Service
Ph: 1800 812 017 Fax: 03 9898 3299
Email: info@cequent.com.au
Post: PO Box 4050. Dandenong South VIC 3175

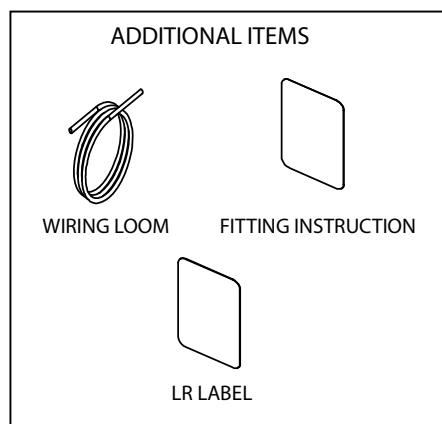
TRAILBOSS

Towbar Fitting Instructions
 To Suit **TOYOTA LANDCRUISER PRADO ALTITUDE EDITION**
KDJ150R SERIES 2014 ON
 Part Number **QT1126L**
 Rating **2500/250 kg**

PLACE THESE INSTRUCTIONS IN THE VEHICLE'S GLOVEBOX AFTER INSTALLATION IS COMPLETED



QTY	DESCRIPTION	ITEM NO
1	WELDED ASSEMBLY	1
2	SHIM PLATE	2
1	TBM ASSEMBLY	3
10	WASHER FLAT 1/2"x1 1/8"x1/8"	4
6	SET SCREW M12-1.25x50	5
4	PLASTIC CAP BLACK	6
1	HEX NUT M10x1.5	7
1	SET SCREW HEX HD M10x30x1.5P	8
4	SCREW BUTTON M12x35x1.25P	9
1	PULL PIN	10
1	R CLIP	11
1	HITCH BOX COLLAR COVER	12
1	ACRYLIC COMPLIANCE CP	13





Towbar Fitting Instructions
To Suit **TOYOTA LANDCRUISER PRADO ALTITUDE EDITION**
KDJ150R SERIES 2014 ON
Part Number **QT1126L**
Rating **2500/250 kg**

PLACE THESE INSTRUCTIONS IN THE VEHICLE'S GLOVEBOX AFTER INSTALLATION IS COMPLETED

INSTRUCTION:

1. On the inside of the rear wheel arch remove 2x Scrivets and 2x Screws. Repeat for opposite side.
2. On the underside of the bumper near the mud flaps remove 3 x Screws. Repeat for the opposite side.
3. On the underside of the bumper near the spare wheel remove 3 x Screws.
4. Release the tailgate to expose the rear cabin. Remove 2 x Scrivets on the passenger side under the tail light.
5. Using a trim remove tool carefully extract the rear garnish on top of the bumper.
6. With the bumper fully exposed remove 4 x Set screws.
7. Carefully remove the Bumper and keep aside in a safe place.
8. On the passenger side remove 2 x Set screws and discard the factory shipping hook.
9. Offer the Towbar to the vehicle and loosely secure the bar using the 6 x M12 x 50 x 1.25P Set screws with flat washers and shim plates (1 per side). Locate each ends of the tow bar first and centre the bar with the vertical mounts first.

NOTE: Access holes are designed into the towbar for access to the centre vertical mounts.

Use the 4 x Button Head M12 x 35 x 1.25 P to secure the Towbar onto the centre mount of the vehicle.

10. With the Towbar loosely secured. It is critical that the factory spare tyre be reset. Do this with the supplied spare wheel kit located on the inside of the tail gate. Lower the spare wheel down and then push forward on the tyre to the front of the vehicle. Whilst completing this action raise the spare tyre back into place. This will provide sufficient clearance and satisfy the design condition for the Towbar.
11. Fully secure the Towbar to the vehicle by torquing all fasteners as specified on Page 1 of these fitting instructions.
12. Carefully cut from the centre of the bumper 23mm up and 84mm across.
13. Re-attach the bumper to the vehicle by following steps 1-6 in reverse.

Note: Due to the limited packaging space there may be contact between the Towbar and bumper. This is a design condition of the Towbar and is of no concern.



Wiring Loom Fitting Instructions
To Suit Toyota Prado
Part Number 100210-WL

Wiring Loom Installation Instructions

Toyota Prado
Part No: 100210-WL

Tail Harness Length Required: 1200mm
ECU Required: 04826
RPA Override Switch Part No: 04848 (If Fitted)

Wiring Loom Installation Time: Approx 20 Mins



Wiring Loom Fitting Instructions
To Suit Toyota Prado
Part Number 100210-WL

1. Remove all the required trims to gain access to the LHS tail light connectors and the LHS rear quarter area of the vehicle.
2. Connect the Trailer Patch Harness (P/No:100210-WL) to the vehicle breakout connector.
3. Route the Trailer Patch Harness (P/No: 100210-WL) along the rear of the luggage compartment and towards the rear RHS quarter of the vehicle.
4. Connect the Trailer Patch Harness to the ECU module (P/No: 04826).
5. Adhere the ECU module to the interior of the cavity in the area below the LHS tail light.
6. Secure the earth ring terminal to the earthing point located above the LHS tail light cavity opening.
7. Locate the main vehicle harness grommet sitting in the floor of the LHS rear quarter area. Drill a Ø30mm hole to the LHS of the grommet just in front of the vehicle clipping point. File back any rough edges and spray the hole with a rust inhibitor.
8. Secure the Tail Harness (Tail length 1200mm) trailer socket (1) to the towbar mounting bracket using M4 fasteners (not supplied).
9. Route the Tail Harness over to the previously drilled hole and feed the connector into the vehicle.
10. Adjust the harness grommet to the required position and secure grommet with a cable tie (not supplied) and then secure the grommet in place. Secure the harness to the towbar using cable ties (not supplied).
11. Connect the Tail Harness 8-way male connector to the Trailer Patch Harness female connector.
12. Test the Trailer socket using a light board or multi-meter.
13. Secure the all harnesses using cables ties (not supplied).
14. Refit all removed parts and secure all fasteners.
15. Place instructions in glove box after fitment.