

# TRAILBOSS

## Towbar Fitting Instructions

To Suit **NISSAN JUKE F15 SERIES 4WD VARIANT ONLY**

Part Number **QTDS856L**

Rating **1150/115 kg**

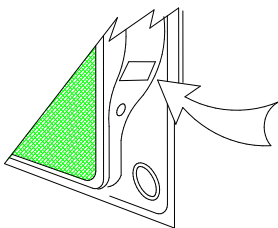
PLACE THESE INSTRUCTIONS IN THE VEHICLE'S GLOVEBOX AFTER INSTALLATION IS COMPLETED

### **WARNING:**

1. Do not, drill, cut, weld or otherwise modify the tow bar.
2. If you are using electric welding on a motor vehicle, **always** check that the vehicle is not equipped with electronic engine or instrument management equipment. Failure to do so could **destroy** any onboard computers. If in doubt, check with the vehicle's manufacturer.
3. The high tensile fasteners supplied with this product were used to achieve the specified rating. If replacement is required ensure that fasteners of the same rating & quality are used. Contact an authorised **Trailboss** dealer if further information is required.
4. If TBM is used in inverted position tow ball may make contact with rear tailgate when lowered, which could cause damage.

### **General:**

1. Ensure all hardware items have been included refer to assembly diagram.
2. It is recommended that the instructions are read through and completely understood before making any attempt to fit this product.
3. Be wary of any changes to vehicle designs or other accessories that may conflict with the installation of this product.
4. Before drilling ensure that the area is clear of fuel, electrical & other components.
5. All holes drilled into the body panels shall have all burrs & swarf removed then coated with a suitable rust preventative paint.
6. For vehicles that require the bumper to be cut. Ensure cut out area is in correct position on the vehicle prior to cutting the bumper.
7. The high tensile fasteners supplied with this product were used to achieve the specified rating. If replacement is required ensure that fasteners of the same rating & quality are used. Contact an authorized **Trailboss** dealer if further information is required.
8. Ensure that all hardware is fastened to torque list below check fasteners on regular basis.
9. Tow bar load rating sticker provided with this product shall be conspicuously located on inside rear end of the driver's door. **(See diagram below).**
10. Trailboss recommends that you check your tow ball to ensure that it complies with the Australian standards **AS 4177.2**.
11. **PLEASE NOTE:** It is advised to remove your lug or tbn when not actually towing so as to produce a clear view of the vehicles registration plate if obscured, and to also provide maximum available departure angle
12. Pull Pin must be fit in down position.



Place load rating sticker  
inside driver's door here

**FOR TRAILER TOWING PURPOSES ONLY**  
For towing capacity details please refer to vehicle owner's manual or to the manufacturer. Overloading can void your warranties.

### **RECOMMENDED ASSEMBLY TORQUE LISTING**

| <u>Diameter</u> | <u>Grade 8.8 Bolt</u> |
|-----------------|-----------------------|
| M6              | 9.5 Nm                |
| M8              | 21.7 Nm               |
| M10             | 43.4 Nm               |
| M12             | 77.3Nm                |
| M14             | 146 Nm                |
| M16             | 189.8 Nm              |

### **Tow bar Maintenance and Care.**

Trailboss recommends that bolt torque's, as listed below, are routinely and regularly inspected and checked for correct tension. Replace any worn or defective parts.

We recommended to remove Tow Ball Mounts (TBM's, tongues or lugs) when not being used for any considerable length of time.

So as to avoid injury, when not towing it is suggested that the tongue, Pull Pin and R-clip are removed then stored in a safe, clean and dry place, away from excessive moisture.

Hitch Pull Pins and spring "R" clips are regularly checked for proper installation. Replace any worn or defective parts.

# TRAILBOSS

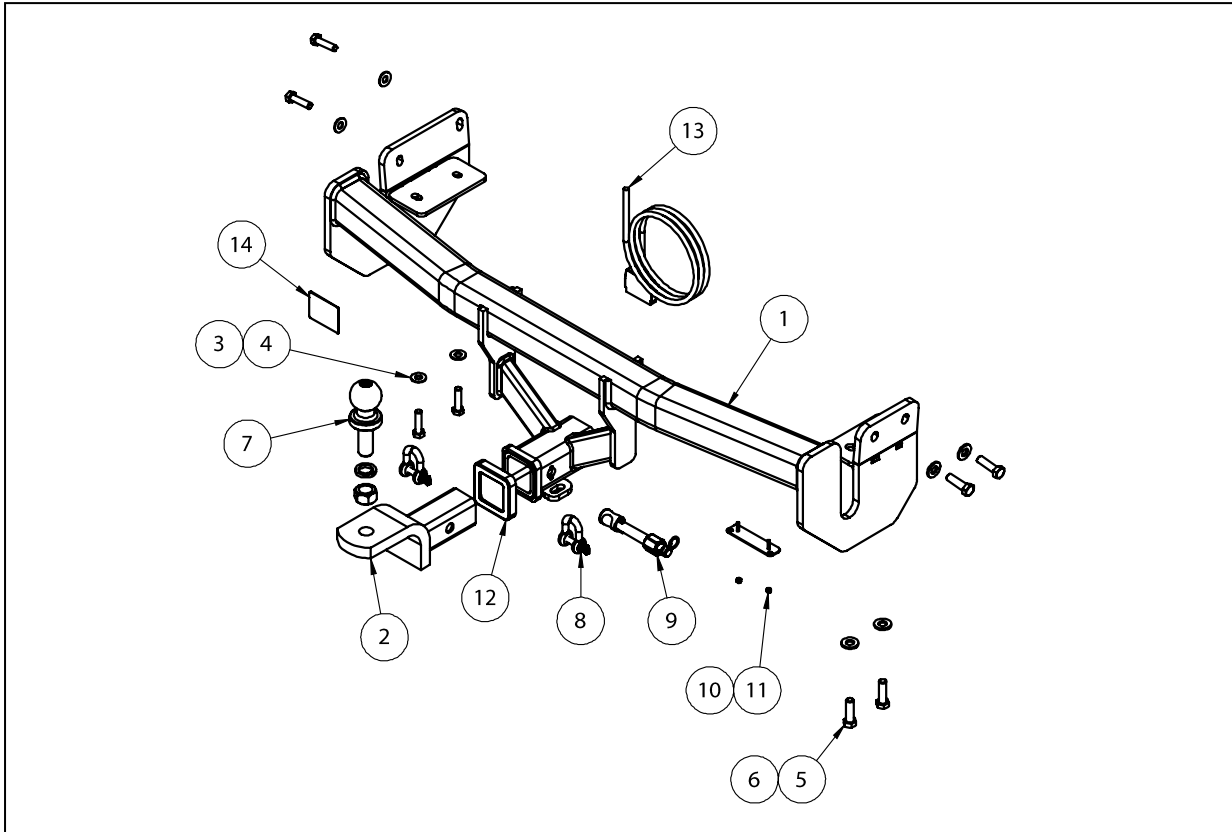
## Towbar Fitting Instructions

To Suit **NISSAN JUKE F15 SERIES 4WD VARIANT ONLY**

Part Number **QTDS856L**

Rating **1150/115 kg**

PLACE THESE INSTRUCTIONS IN THE VEHICLE'S GLOVEBOX AFTER INSTALLATION IS COMPLETED



| QTY. | DESCRIPTION                  | ITEM NO. |
|------|------------------------------|----------|
| 1    | NISSAN JUKE 4WD WELDED ASSY  | 1        |
| 1    | TBM ASSY                     | 2        |
| 4    | SET SCREW M10x1.25x40        | 3        |
| 4    | WASHER FLAT M10x23x2 Z/P     | 4        |
| 4    | BOLT M12-1.25x40             | 5        |
| 4    | WASHER FLAT 1/2"x1 1/8"x1/8" | 6        |
| 1    | 50mm TOWBALL                 | 7        |
| 2    | 10mm "D" SHACKLE             | 8        |
| 1    | ANTI-RATTLE PULL PIN ASSY    | 9        |
| 1    | PLUG BRACKET                 | 10       |
| 2    | NUT NYLOC M4-0.7 Z/P         | 11       |
| 1    | HITCH BOX COLLAR COVER       | 12       |
| 1    | WIRING LOOM                  | 13       |
| 1    | ACRYLIC COMPLIANCE PLATE     | 14       |

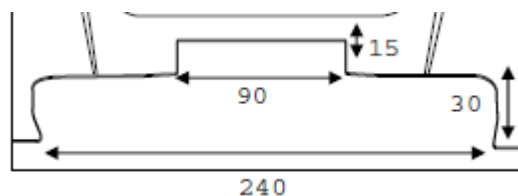


Towbar Fitting Instructions  
To Suit **NISSAN JUKE F15 SERIES 4WD VARIANT ONLY**  
Part Number **QTDS856L**  
Rating **1150/115 kg**

PLACE THESE INSTRUCTIONS IN THE VEHICLE'S GLOVEBOX AFTER INSTALLATION IS COMPLETED

**INSTRUCTION:**

1. Release the rear tail gate to expose the boot.
2. Remove 4 x Set Screws. Two are located on the tail light and additional two on the bumper under the tail light. Keep in a safe place for re-assembly. Repeat for Passenger and Driver side.
3. Carefully remove and disconnect the tail light. Keep in a safe place for re-assembly. Repeat for Passenger and Driver side.
4. On the inside of the guard liner, remove 3 x Trim clips. Remove bottom guard liner. Repeat for passenger and Driver side.
5. Carefully remove the outer guard moulding by releasing the internal tab and peeling the moulding away. Remove 1 x Set screw securing the bumper to the rear quarter panel. Repeat for passenger and driver side.
6. Remove 6 x Trim clips located on the bottom lip of the bumper. Carefully remove the bumper by peeling away at each side. Disconnect the centre reflector plug. Keep the bumper in a safe place for re-assembly.
7. Remove and discard, foam reinforcement, impact beam and bottom plastic infill panel.  
  
Impact Beam: Remove 6 x Set Screws securing it to the back panel of the vehicle.  
  
Bottom Plastic Infill Panel: Remove 3 x Trim Clips.
8. On the Driver's side chassis rail, remove 4 x Set Screws securing the factory shipping Hook to the vehicle and discard.
9. Offer the Towbar to the vehicle. Snake the Towbar around the back panel and loosely secure the vertical mounts first with 2 x M10x1.25P on the Passenger side and 2 x M12x1.25P on the Driver side. Then loosely secure horizontal mounting points.  
  
Torque all fasteners to specifications listed on Page 1 of this document.
10. Using the centre fog light as reference locate the centre of the bumper. Carefully cut 240mm wide (120 either side of the centre) and 30mm up from the edge of the bumper.  
  
Then cut an additional 90mm wide (45mm either side of the centre) and 15mm up from the edge of the previous cut.
11. Re-attached bumper by following steps 1-6 in reverse.



**BUMPER CUT**



Wiring Loom Fitting Instructions  
To Suit Nissan Juke  
Part Number 101023-WL

Wiring Loom Installation Instructions

Nissan Juke  
Part No: 101023-WL

Tail Harness Length Required: 1200mm

Wiring Loom Installation Time: Approx 20 Mins

## Wiring Loom Fitting Instructions To Suit Nissan Juke Part Number 101023-WL

1. In the luggage compartment, remove the floor carpet cover.
2. Remove the tool tray underneath the floor carpet cover.
3. Remove the rear compartment trim.
4. On the LHS of the luggage compartment, dislodge the LHS luggage compartment trim.
5. On the LHS of the luggage compartment rear quarter panel, drill out the hole to Ø30mm.
6. File any rough or sharp edges and spray with rust inhibitor.



7. Connect the trailer patch 12-way connector (2) to the ECU (2).
8. Apply double sided tape to the ECU (04826) (3) and secure it to the vehicle sheet metal (4) on the LHS of the luggage compartment.

**Note: Ensure the ECU connector is facing downwards.**





Wiring Loom Fitting Instructions  
To Suit Nissan Juke  
Part Number 101023-WL

9. Using a tek screw, secure the Trailer Wiring Harness ring terminal to a suitable location on the sheet metal as shown.
10. Locate the vehicle breakout connector.
11. Connect the Trailer Wiring Harness 6-way female connector to its mating 6-way male connector.
12. Mount the tail harness socket to the towbar mounting bracket using M4 fasteners (not supplied).
13. Route the tail harness towards the LHS, up through the previously drilled grommet hole.
14. Ensure the tail harness grommet is seated correctly and secured in place using a cable tie (not supplied).
15. Connect the tail harness (tail length 1200mm) 8-way connector to the trailer harness mating 8-way connector.
16. Test the trailer harness function using a light board or multimeter.
17. Secure all harnesses using cable ties (not supplied).
18. Re-fit all removed parts and secure all fasteners, ensure there are no squeaks or rattles.
19. Place instructions in glove box after fitment.



# FITTING INSTRUCTIONS

## Silent Anti-Rattle Hitch Pin (PR0001)

• These fitting instructions are supplied to ensure understanding of how the HITCH PIN should be fitted and used correctly.

• Once installed, we recommend **ALL** instructions are kept and placed in the vehicle glove box.

**NOTE: Routine maintenance and inspection of the towbar & HITCH PIN is required. Regularly inspect for wear and check the tightness of the Hitch Pin. Follow instructions below to retighten the nut when necessary.**

**\*Do not tow with your vehicle if the R CLIP or the HITCH PIN is loose or missing. Replacement parts are available from your Pro Series Distributor.**

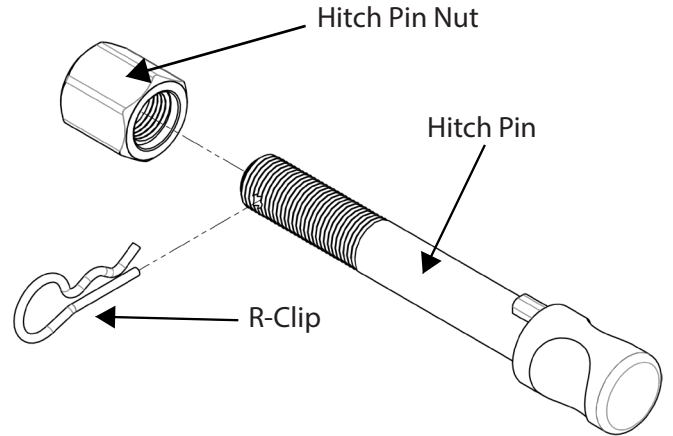


Fig 1. Silent Anti-Rattle Hitch Pin assembly

### STEP 1

Insert Trailer Ball Mount (TBM) into towbar HITCHBOX, aligning hole in TBM SHANK with hole in HITCHBOX (Fig 2).

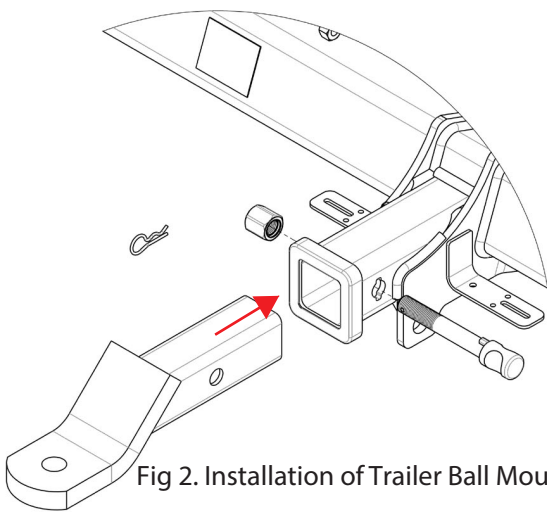


Fig 2. Installation of Trailer Ball Mount

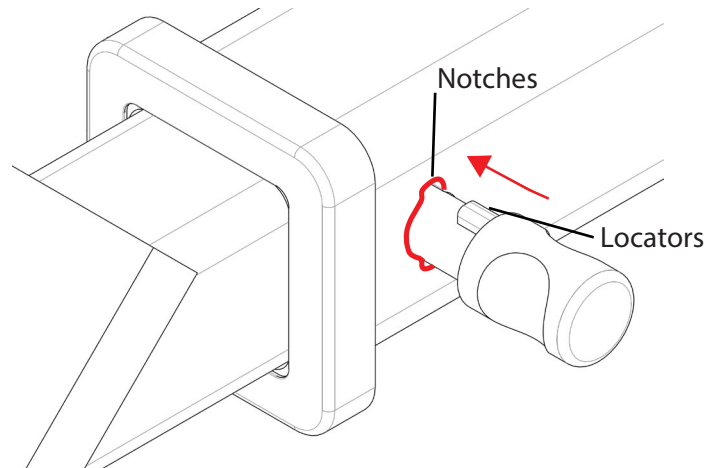


Fig 3. Silent Anti-Rattle Hitch Pin orientation

### STEP 2

Insert HITCH PIN through hole in HITCHBOX and hole in TBM SHANK; ensure the LOCATORS are inserted into the NOTCHES in the HITCHBOX (Fig. 3).

### STEP 3

Screw HITCH PIN NUT onto HITCH PIN ; tighten HITCH PIN NUT until finger tight, ensuring TBM is restrained from movement.

### STEP 4

Tighten HITCH PIN NUT by turning nut a further 1/8th of a turn in the clockwise direction using a 24mm spanner (Fig. 4).

### STEP 5

Install HITCH PIN R CLIP through the hole on the HITCH PIN (Fig. 1).

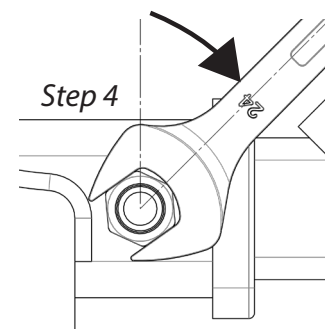


Fig 4. Tightening of Silent Anti-Rattle Hitch Pin Nut