



Towbar Fitting Instructions  
To Suit Ford Transit Cab Chassis 1/01-ON  
Part Number QTFD1100L  
Rating 3000Kg

1. Remove tail light assembly mounting frame.
2. Remove tail light connection plugs from inside of chassis rail.
3. Remove shipping hook bolts and retain, **note** leave shipping hook in place.
4. Lift towbar into position to align with holes on inside face of each chassis rail and support.
5. Fit bolts spring washers fitting plates and nuts (items 1, 2, 3 & 4), **note** use original bolts through shipping hook.
6. Tighten all bolts to torque listing below.
7. Refit tail light assembly mounting frame and cable tie looms.
8. Attach the plastic hitch box collar (item 8) by applying firm even pressure.
9. Insert the tongue (item 7) into the hitchbox and secure with "R" clip and pull pin (items 5 & 6)

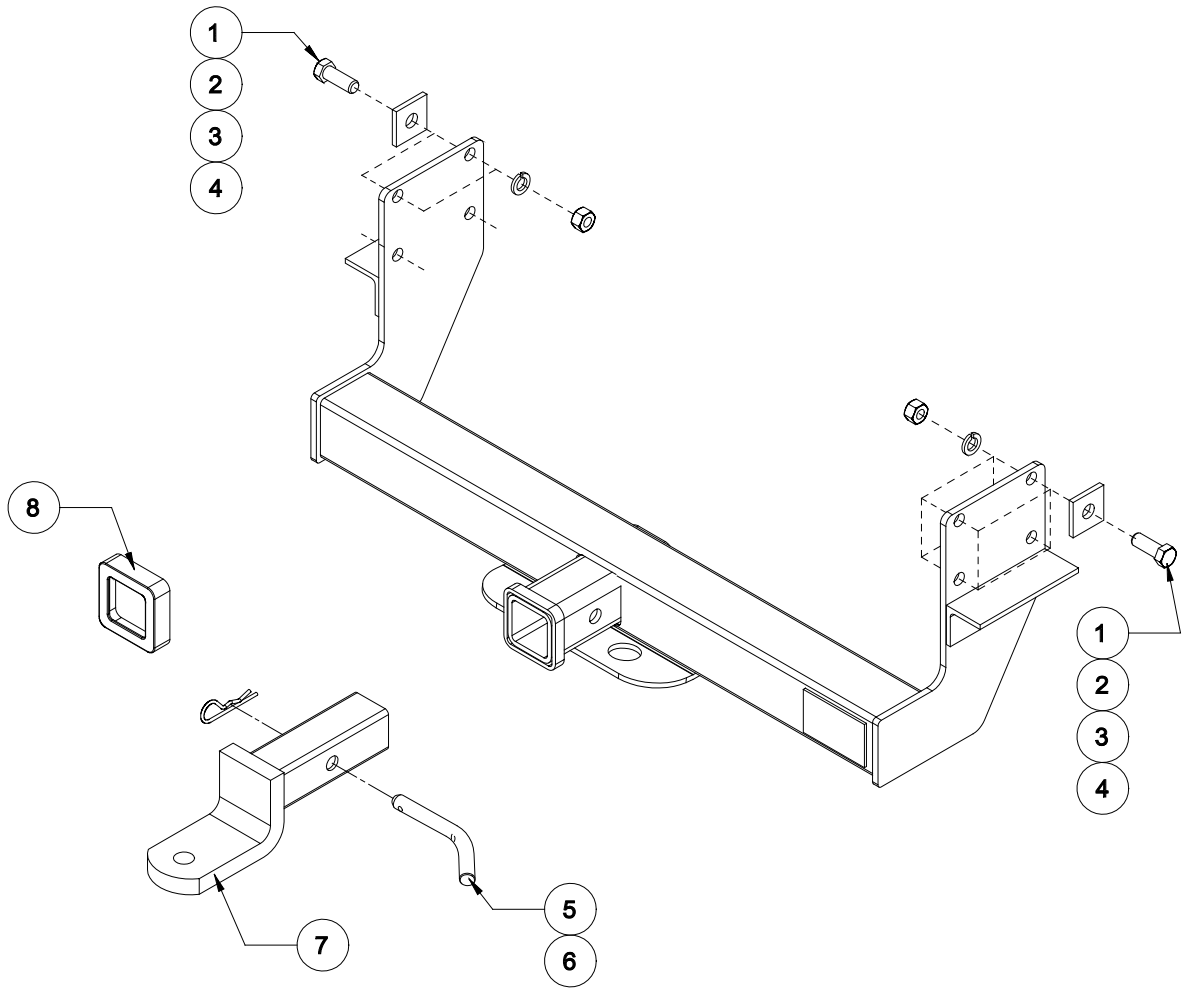
**COMPONENT KIT**

<b>ITEM No.</b>	<b>DESCRIPTION</b>	<b>QTY</b>	<b>TORQUE Nm</b>
1	M14 x 40 – 2.0P BOLT	6	121.0
2	FITTING PLATE 45x6x45 Ø17	6	
3	M14 SPRING WASHER	6	
4	M14 x 2.0P NUT	6	
5	PULL PIN (PIN_04)	*1	
6	"R" CLIP (PIN_01)	*1	
7	TONGUE (5196)	1	
8	COLLAR COVER (COL_04)	1	

Note: \* One of each item 5 and 6 is used to secure the tongue to the towbar during transit.



Towbar Fitting Instructions  
To Suit Ford Transit Cab Chassis 1/01-ON  
Part Number QTFD1100L  
Rating 3000Kg





Wiring Loom Fitting Instructions  
To Suit Ford Transit Single Cab  
Part Number 100180-WL

## Wiring Loom Installation Instructions

Ford Transit Single Cab Chassis  
Part No: 100180-WL

### Kit Part Includes:

Trailer Patch Harness P/No: 100180-WL

Power Harness P/No: 100180-PH

ECU Required Part No: 04826

RPA Override Switch Part No: 04848 (If Fitted)

Wiring Loom Installation Time: Approx 15 Mins

# TRAILBOSS

## Wiring Loom Fitting Instructions To Suit Ford Transit Single Cab Part Number 100180-WL

1. Remove the grommet from the rear LHS of the cabin (grommet required for use later do not discard).
2. Inside the driver's cabin, gain access to the battery by sliding the battery cover open.
3. Secure the power harness (P/No: 100180-PH) ring terminal to the battery positive terminal using the existing fastener.
4. Route the rest of the power harness underneath the carpet and then up towards the LHS of the cabin.
5. Route the power harness through the cabin LHS grommet hole.
6. Outside the LHS rear of the cabin, retrieve the power harness. Cut a notch onto the previously removed grommet and route the power harness connector through. Adjust the grommet along the harness until it is seated correctly into the grommet hole.
7. From the grommet area, route the power harness along the chassis rail following the main harness all the way. Secure with 200mm cable ties every 200mm (not supplied).
8. Disconnect the LHS and RHS tail light connectors and patch the trailer patch harness (P/No: 100180-WL) connectors into the LHS tail light. Route the trailer patch harness across the chassis/crossbeam to the RHS tail lights. Patch the trailer patch harness connectors in between the RHS tail light.
9. Drill out a 10mm hole into the sheet metal area as indicated (1). Secure the trailer patch harness ground ring terminal (2) using an appropriate bolt and washer (3).



10. Using silicone or electrical grease, water proof the back of the trailer patch harness ECU connector and then connect it into the ECU (P/No: 04826). Secure the ECU into place on the inner rail of the LHS chassis using double sided tape or cable ties (not supplied).
11. Water proof the trailer patch harness 8-way female connector and the tail harness (tail length 1200mm) 8-way male connector by using silicone or electrical grease.
12. Connect the trailer patch harness 8-way female connector to the tail harness 8-way male connector.
13. Route the tail harness across the towbar and secure the tail socket to the towbar mounting bracket using M4 fasteners. Secure the harness to the towbar using cable ties (not supplied).



Wiring Loom Fitting Instructions  
To Suit Ford Transit Single Cab  
Part Number 100180-WL

14. Test the Trailer socket using a light board or multi-meter.
15. Secure all harnesses using cables ties (not supplied).
16. Refit all removed parts and secure all fasteners.
17. Place instructions in glove box after fitment.