

TRAILBOSS

Towbar Fitting Instructions
To Suit FORD RANGER/ MAZDA BT-50 CAD CHASSIS
Part Number **QTFD1901L**
Rating 3350 kg

PLEASE ENSURE THAT INSTRUCTIONS ARE UNDERSTOOD PRIOR TO FITMENT

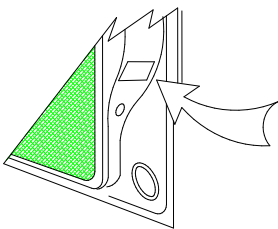
PLACE THESE INSTRUCTIONS IN THE VEHICLE'S GLOVEBOX AFTER INSTALLATION IS COMPLETE

WARNING:

1. Do not, drill, cut, weld or otherwise modify the tow bar.
2. If you are using electric welding on a motor vehicle, **always** check that the vehicle is not equipped with electronic engine or instrument management equipment. Failure to do so could **destroy** any onboard computers. If in doubt, check with the vehicle's manufacturer.
3. The high tensile fasteners supplied with this product were used to achieve the specified rating. If replacement is required ensure that fasteners of the same rating & quality are used. Contact an authorised **Trailboss** dealer if further information is required.

General:

1. Ensure all hardware items have been included refer to assembly diagram.
2. It is recommended that the instructions are read through and completely understood before making any attempt to fit this product.
3. Be wary of any changes to vehicle designs or other accessories that may conflict with the installation of this product.
4. Before drilling ensure that the area is clear of fuel, electrical & other components.
5. All holes drilled into the body panels shall have all burrs & swarf removed then coated with a suitable rust preventative paint.
6. For vehicles that require the bumper to be cut. Ensure cut out area is in correct position on the vehicle prior to cutting the bumper.
7. The high tensile fasteners supplied with this product were used to achieve the specified rating. If replacement is required ensure that fasteners of the same rating & quality are used. Contact an authorized **Trailboss** dealer if further information is required.
8. Ensure that all hardware is fastened to torque list below check fasteners on regular basis.
9. Tow bar load rating sticker provided with this product shall be conspicuously located on inside rear end of the driver's door. **(See diagram below).**
10. Trailboss recommends that you check your tow ball to ensure that it complies with the Australian standards **AS 4177.2.**
11. **PLEASE NOTE:** It is advised to remove your lug or tbn when not actually towing so as to produce a clear view of the vehicles registration plate if obscured, and to also provide maximum available departure angle
12. Pull Pin must be fit in down position.



Place load rating sticker
inside driver's door here

FOR TRAILER TOWING PURPOSES ONLY
For towing capacity details please refer to vehicle owner's manual or to the manufacturer. Overloading can void your warranties.

RECOMMENDED ASSEMBLY TORQUE LISTING

Diameter	Grade 8.8 Bolt
M6	9.5 Nm
M8	21.7 Nm
M10	43.4 Nm
M12	77.3Nm
M14	146 Nm
M16	189.8 Nm

Tow bar Maintenance and Care.

Trailboss recommends that bolt torque's, as listed below, are routinely and regularly inspected and checked for correct tension. Replace any worn or defective parts.

We recommended to remove Tow Ball Mounts (TBM's, tongues or lugs) when not being used for any considerable length of time.

So as to avoid injury, when not towing it is suggested that the tongue, Pull Pin and R-clip are removed then stored in a safe, clean and dry place, away from excessive moisture.

Hitch Pull Pins and spring "R" clips are regularly checked for proper installation. Replace any worn or defective parts.



Towbar Fitting Instructions
To Suit FORD RANGER/ MAZDA BT-50 CAD CHASSIS
Part Number QTFD1901L
Rating 3350 kg

PLEASE ENSURE THAT INSTRUCTIONS ARE UNDERSTOOD PRIOR TO FITMENT
PLACE THESE INSTRUCTIONS IN THE VEHICLE'S GLOVEBOX AFTER INSTALLATION IS COMPLETE

STEP 1. Move wire loom Located on diff housing

- a. Remove wiring loom mounted on the diff housing.
- b. Drill a 8mm hole through the connector bracket from bottom to top surface which is welded on the diff housing.
- c. Apply anti-rust or paint to newly drilled hole to prevent corrosion.
- d. Mount the wiring loom on the newly drilled top hole of the connector bracket.

STEP 2. Towbar Fitment

NOTE: Two persons required to lift towbar up to vehicle.

- a. Insert the Nut plate into the passenger side of the Chassis Rail and align with the holes, repeat with item 3 on the driver side.
- b. Loosely secure the towbar side arm to the Vehicle chassis rail via Nut plates using two M12 bolts and washers on either side.
- c. Loosely secure the towbar sidearm to the chassis rail using three sets of M12 bolts & washer.

NOTE: Use 1xM12 Nut & washer per side for the hole that doesn't have a captive nut.

STEP 3. Torque all bolts to recommended specification as per table on Page 1. Tighten Vertical M12 Bolts x2 per side first ten horizontal bolts.

STEP 4. Reconnect all electrical connections.

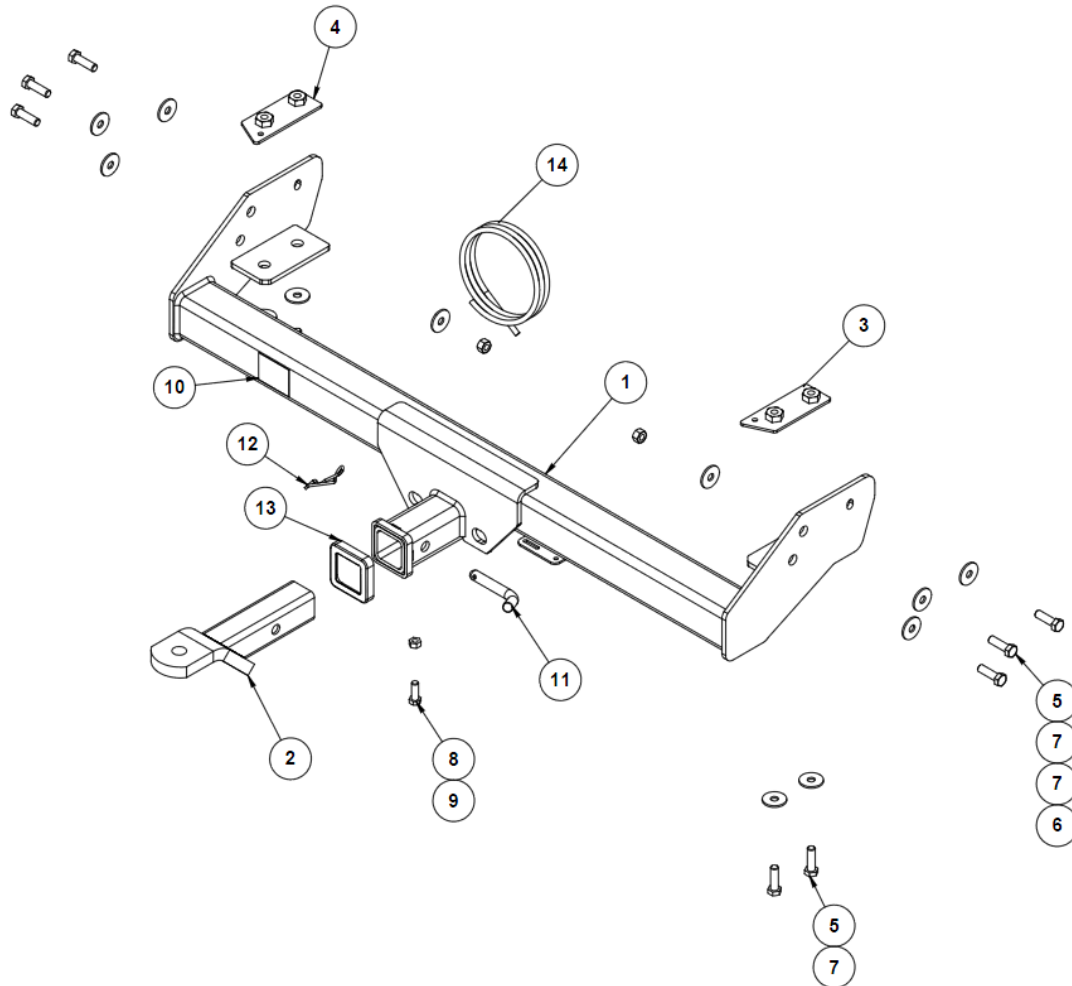
STEP 5. Reattach spare wheel on to Vehicle.

QTY	DESCRIPTION	ITEMS
1	Towbar	1
1	T.B.MOUNT 21161	2
1	NUT PLATE DRIVER SIDE	3
1	NUT PLATE PASSENGER SIDE	4
10	Bolt M12 x 30 x 1.75P GR 8.8	5
2	M12x1.75 HEX NUT	6
12	WASHER FT M12x37x3mm	7
1	M10 - 1.5 x 30mm BOLT	8
1	M10x1.5 HEX NUT PC8	9
1	COMPLIANCE PLATE	10
1	PULL PIN	11
1	SPRING COTTER PIN ASSEMBLY	12
1	H/BOX COLLAR COVER	13
1	WIRELOOM	14



Towbar Fitting Instructions
To Suit FORD RANGER/ MAZDA BT-50 CAD CHASSIS
Part Number **QTFD1901L**
Rating 3350 kg

PLEASE ENSURE THAT INSTRUCTIONS ARE UNDERSTOOD PRIOR TO FITMENT
PLACE THESE INSTRUCTIONS IN THE VEHICLE'S GLOVEBOX AFTER INSTALLATION IS COMPLETE





Wiring Loom Fitting Instructions
To Suit Ford Ranger / Mazda BT-50
Part Number 100713-WL

Wiring Loom Installation Instructions

Ford Ranger / Mazda BT-50
Part No: 100713-WL

Tail Harness Length Required: 1800mm

Wiring Loom Installation Time: Approx. 20 Mins

If factory OEM RPA is fitted, Trouble Code will be logged if disabled.



Wiring Loom Fitting Instructions
To Suit Ford Ranger / Mazda BT-50
Part Number 100713-WL

1. In the engine bay, connect the supplied power harness (P/No: 04825) ring terminal to the positive battery.
2. Route the power harness down towards the LHS of the vehicle under carriage.
3. From underneath the vehicle, route the power harness along the LHS of the chassis rail towards the rear of the vehicle.
4. Ensure that the power harness is secure with cable ties (not supplied).
5. On the LHS rear under carriage, locate and disconnect the 6-way tail light connectors and connect the 6-way trailer patch (P/no: 100713-WL) in between.
6. Connect the power harness 1-way male connector to the power harness 1-way female connector.
7. Route the Trailer Harness along the rear of the vehicle across to the RHS tail light connectors.
8. On the RHS of the rear under carriage, disconnect the 6-way tail light connectors and connect the 6-way trailer patch connectors in between.
9. Mount the tail harness socket towbar mounting bracket using M4 fasteners (not supplied).
10. Route the tail harness (tail length 1800mm) along the towbar towards the trailer patch.
11. Connect the Trailer Harness 8-way connector to the tail light harness mating connector.
12. Waterproof the connectors using electrical grease or silicone.
13. Test Trailer Harness function using trailer light board or multi-meter.
14. Secure all harnesses using cable ties (not supplied).
15. Re-fit all removed parts and secure all fasteners ensuring there are no squeaks or rattles.
16. Please place the fitting instructions in the glove box after installation.