

TRAILBOSS

Towbar Fitting Instructions
To Suit **QTHD722L**
Part Number **HOLDEN COLORADO RG CL4**
Rating **3500/350 kg**

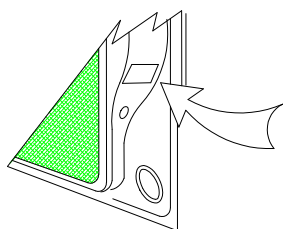
PLACE THESE INSTRUCTIONS IN THE VEHICLE'S GLOVEBOX AFTER INSTALLATION IS COMPLETED

WARNING:

1. Do not, drill, cut, weld or otherwise modify the tow bar.
2. If you are using electric welding on a motor vehicle, **always** check that the vehicle is not equipped with electronic engine or instrument management equipment. Failure to do so could **destroy** any onboard computers. If in doubt, check with the vehicle's manufacturer.
3. The high tensile fasteners supplied with this product were used to achieve the specified rating. If replacement is required ensure that fasteners of the same rating & quality are used. Contact an authorised **Trailboss** dealer if further information is required.
4. If TBM is used in inverted position tow ball may make contact with rear tailgate when lowered, which could cause damage.

General:

1. Ensure all hardware items have been included refer to assembly diagram.
2. It is recommended that the instructions are read through and completely understood before making any attempt to fit this product.
3. Be wary of any changes to vehicle designs or other accessories that may conflict with the installation of this product.
4. Before drilling ensure that the area is clear of fuel, electrical & other components.
5. All holes drilled into the body panels shall have all burrs & swarf removed then coated with a suitable rust preventative paint.
6. For vehicles that require the bumper to be cut. Ensure cut out area is in correct position on the vehicle prior to cutting the bumper.
7. The high tensile fasteners supplied with this product were used to achieve the specified rating. If replacement is required ensure that fasteners of the same rating & quality are used. Contact an authorized **Trailboss** dealer if further information is required.
8. Ensure that all hardware is fastened to torque list below check fasteners on regular basis.
9. Tow bar load rating sticker provided with this product shall be conspicuously located on inside rear end of the driver's door. **(See diagram below)**.
10. Trailboss recommends that you check your tow ball to ensure that it complies with the Australian standards **AS 4177.2**.
11. **PLEASE NOTE:** It is advised to remove your LUG or TBM when not actually towing so as to produce a clear view of the vehicles registration plate if obscured, and to also provide maximum available departure angle



Place load rating sticker
inside driver's door here

FOR TRAILER TOWING PURPOSES ONLY
For towing capacity details please refer to vehicle owner's manual or to the manufacturer. Overloading can void your warranties.

RECOMMENDED ASSEMBLY TORQUE LISTING

Diameter	Grade 8.8 Bolt
M6	9.5 Nm
M8	21.7 Nm
M10	43.4 Nm
M12	77.3Nm
M14	146 Nm
M16	189.8 Nm

Tow bar Maintenance and Care.

Trailboss recommends that bolt torque's, as listed below, are routinely and regularly inspected and checked for correct tension. Replace any worn or defective parts.

We recommended to remove Tow Ball Mounts (TBM's, tongues or lugs) when not being used for any considerable length of time.

So as to avoid injury, when not towing it is suggested that the tongue, Pull Pin and R-clip are removed then stored in a safe, clean and dry place, away from excessive moisture.

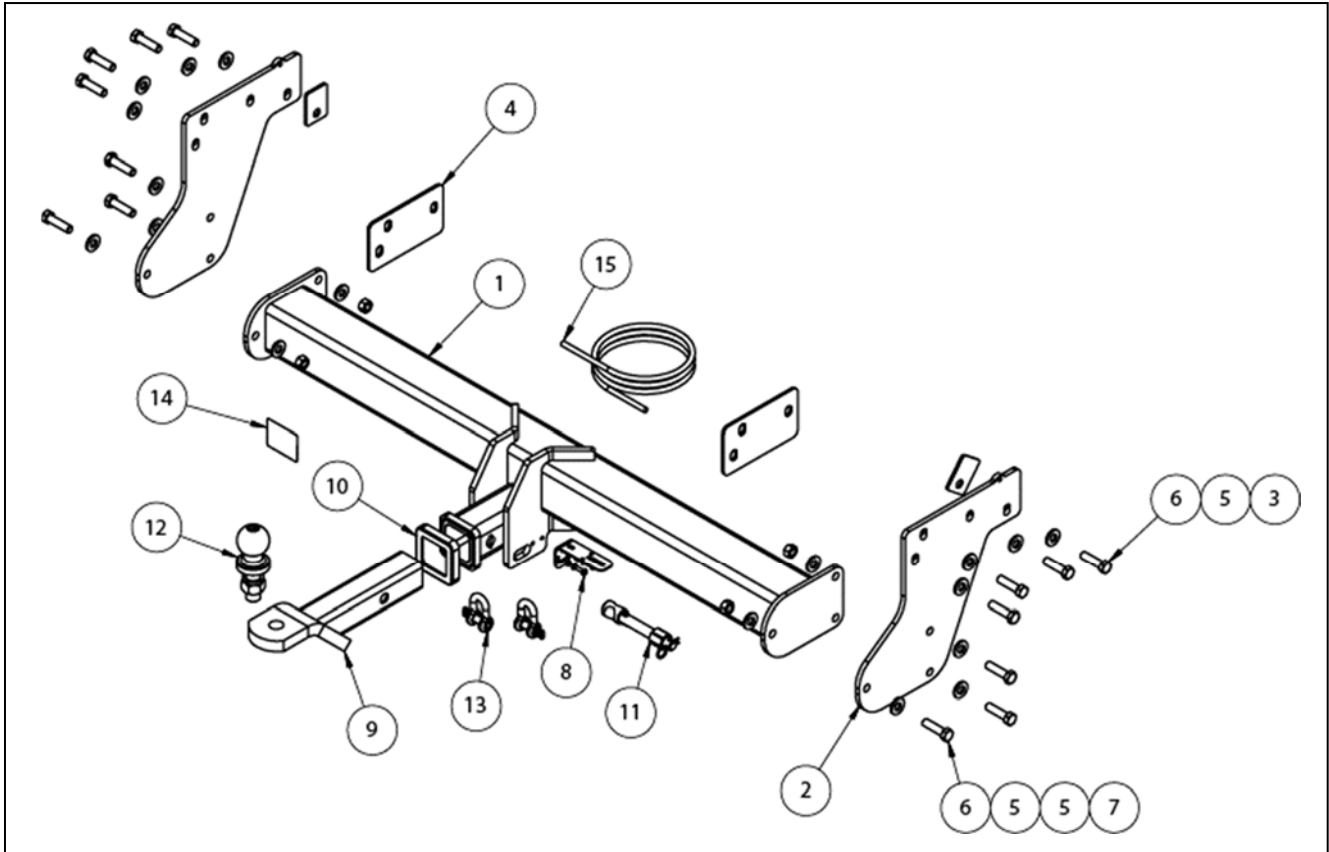
Hitch Pull Pins and spring "R" clips are regularly checked for proper installation. Replace any worn or defective parts.

Cequent Customer Service
Ph: 1800 812 017 Fax: 03 9898 3299
Email: info@cequent.com.au
Post: PO Box 4050, Dandenong South VIC 3175

TRAILBOSS

Towbar Fitting Instructions
 To Suit **QTHD722L**
 Part Number **HOLDEN COLORADO RG CL4**
 Rating **3500/350 kg**

PLACE THESE INSTRUCTIONS IN THE VEHICLE'S GLOVEBOX AFTER INSTALLATION IS COMPLETED



ITEM	DESCRIPTION	QTY
1	WELDED ASSEMBLY	1
2	SIDEPLATE	2
3	SPACER PLATE	2
4	STEP SPACER PLATE	2
5	WASHER PLAIN 1/2x1-1/8x16G	20
6	SET SCREW M12x45x1.25P	14
7	NUT HEX HD M12x1.25P	6
8	UNIVERSAL PLUG BRACKET KIT	1

ITEM	DESCRIPTION	QTY
9	TRAILER BALL MOUNT	1
10	HOLDEN COLORADO RG CL4	1
11	ANTI-RATTLE PULL PIN ASSY SILVER	1
12	TOWBALL 50MM	1
13	"D" SHACKLE 10MM	2
14	ACRYLIC COMPLIANCE LABEL	1
15	WIRING LOOM	1

Cequent Customer Service
 Ph: 1800 812 017 Fax: 03 9898 3299
 Email: info@cequent.com.au
 Post: PO Box 4050, Dandenong South VIC 3175

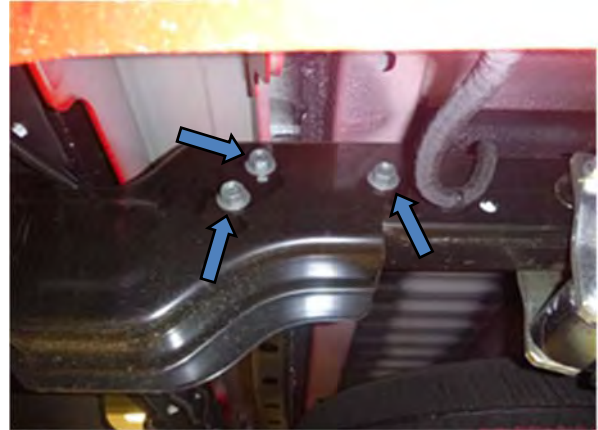
TRAILBOSS

Towbar Fitting Instructions
To Suit **QTHD722L**
Part Number **HOLDEN COLORADO RG CL4**
Rating **3500/350 kg**

PLACE THESE INSTRUCTIONS IN THE VEHICLE'S GLOVEBOX AFTER INSTALLATION IS COMPLETED

1. Remove the wiring harness clip from the chassis.
2. If the vehicle has a step assembly attached, remove and discard the 3x M12 bolts securing the step assembly to the chassis. (The step remains on the vehicle)

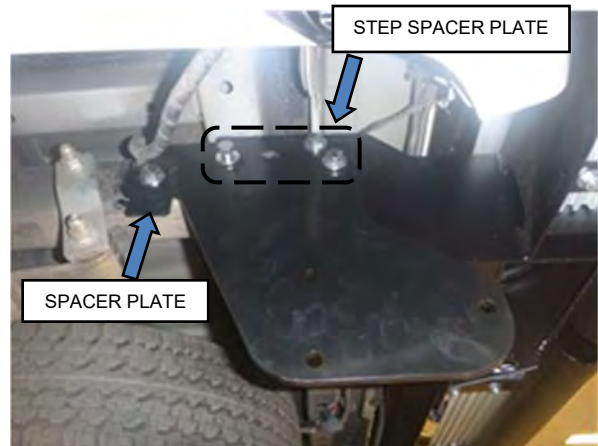
Repeat for the opposite side.



3. **If vehicle is fitted with a step.**
Place LH side arm along with the 4mm spacer plate in position and loosely secure with 4x M12 bolts, complete with 1 x washer per bolt.

If vehicle is fitted without a step.
Place LH side arm along with the (60x45x4mm) spacer plate and the (160x90x4mm) step spacer plate in position and loosely secure with 4x M12 bolts, complete with 1 x washer per bolt.

Repeat for the RH side.



4. Fit the crosstube to the side arms and loosely secure with 6 x M12 bolts, complete with 2 x washers and 1 x M12 nut per bolt (3 bolts per side).
5. Position the step assembly (where applicable) and towbar in position and torque all bolts.

BOLT TORQUE: 125Nm



Cequent Customer Service
Ph: 1800 812 017 Fax: 03 9898 3299
Email: info@cequent.com.au
Post: PO Box 4050, Dandenong South VIC 3175

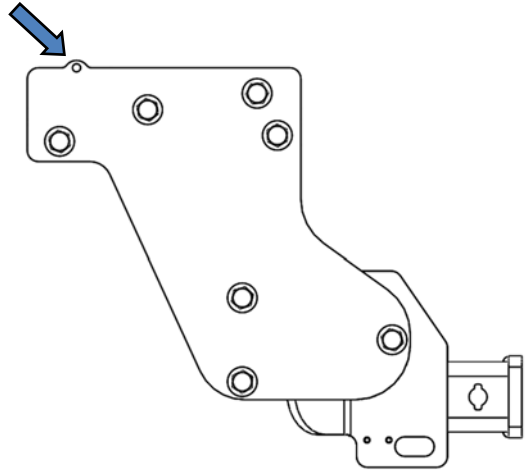


Towbar Fitting Instructions
To Suit **QTHD722L**
Part Number **HOLDEN COLORADO RG CL4**
Rating **3500/350 kg**

PLACE THESE INSTRUCTIONS IN THE VEHICLE'S GLOVEBOX AFTER INSTALLATION IS COMPLETED

6. Secure the wiring harness through the top hole on the side arm with a cable tie (not supplied)

Repeat for the opposite side.



Cequent Customer Service
Ph: 1800 812 017 Fax: 03 9898 3299
Email: info@cequent.com.au
Post: PO Box 4050, Dandenong South VIC 3175



Wiring Loom Fitting Instructions
To Suit Holden Colorado MY12 (08/2012 – Onwards)
Part Number 100819-WL

Wiring Loom Installation Instructions

Holden Colorado MY12
(08/2012 – Onwards)

Part No: 100819-WL

Tail Harness Length Required: 400mm
ECU: WLT030 - LTZ Models (Hi-Spec)
ECU: WLT033 - DX, LX, LT Models (Low-Spec)

Wiring Loom Installation Time: Approx 45 Mins



Wiring Loom Fitting Instructions
To Suit Holden Colorado MY12 (08/2012 – Onwards)
Part Number 100819-WL

1. On the rear of the vehicle, underneath the rear bumper on the RHS, disconnect the 6-way tail light assembly connectors and connect the trailer patch (100819-WL) in between.
2. Route the trailer harness along the rear tow bar towards the LHS of the vehicle tail light and secure with cable ties (not supplied).
3. On the LHS of the vehicle, disconnect the tail light 6-way assembly connectors and connect the trailer patch connectors in between.
4. On the LHS, underneath the rear bumper, using a tech screw, secure the ground ring terminal to the metal sheet.

Note: Spray rust prevention inhibitor.

5. Connect the 24-way waterproof ECU connector to the ECU (WLT030).
6. Secure the ECU onto the metal sheet above the tail light connectors, using tech screw.

Note: Spray rust prevention inhibitor.

7. Connect the 1-way connector to the power harness 1-way connector.
8. Route the 'ORANGE' power wire towards the front of the vehicle along the chassis rail.
9. In the engine bay, remove the fuse panel cover and secure the ring terminal to the positive post.
10. Mount the trailer socket to the towbar mounting bracket using M4 fasteners (not supplied).
11. Route the tail harness towards the trailer harness mating connector.
12. Waterproof the Trailer Harness 8-way connector and the tail harness 8-way male connector using silicone or grease.
13. Connect the Tail Harness 8-way connector to the trailer patch 8-way mating connector.
14. Test the Trailer Harness function using a light board or multimeter.
15. Secure all harnesses using cables ties (not supplied).
16. Re-fit all removed parts and secure all fasteners, ensuring there are no squeaks or rattles.
17. Place the instructions in the glove box after fitment.



FITTING INSTRUCTIONS

Silent Anti-Rattle Hitch Pin (PR0001)

• These fitting instructions are supplied to ensure understanding of how the HITCH PIN should be fitted and used correctly.

• Once installed, we recommend **ALL** instructions are kept and placed in the vehicle glove box.

NOTE: Routine maintenance and inspection of the towbar & HITCH PIN is required. Regularly inspect for wear and check the tightness of the Hitch Pin. Follow instructions below to retighten the nut when necessary.

***Do not tow with your vehicle if the R CLIP or the HITCH PIN is loose or missing. Replacement parts are available from your Pro Series Distributor.**

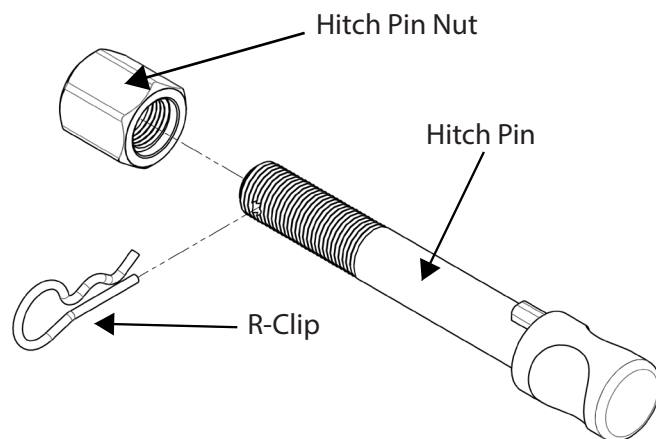


Fig 1. Silent Anti-Rattle Hitch Pin assembly

STEP 1

Insert Trailer Ball Mount (TBM) into towbar HITCHBOX, aligning hole in TBM SHANK with hole in HITCHBOX (Fig 2).

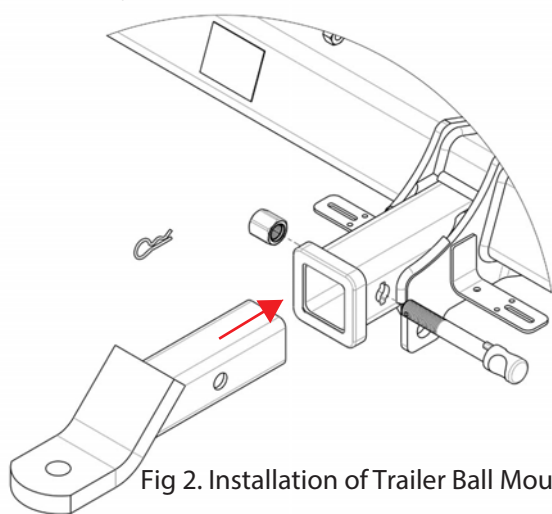


Fig 2. Installation of Trailer Ball Mount

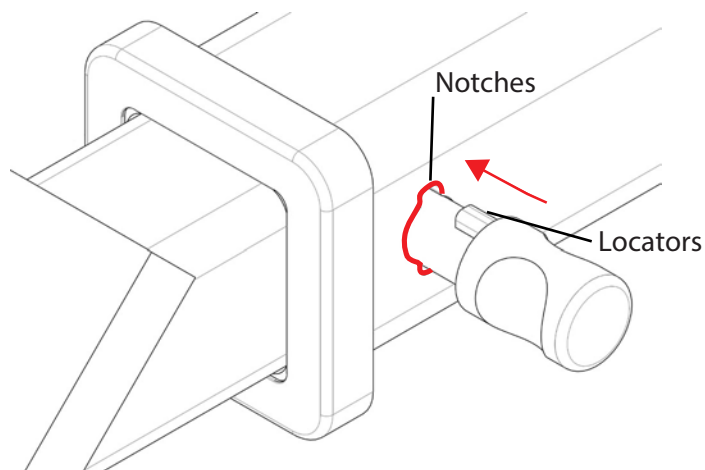


Fig 3. Silent Anti-Rattle Hitch Pin orientation

STEP 2

Insert HITCH PIN through hole in HITCHBOX and hole in TBM SHANK; ensure the LOCATORS are inserted into the NOTCHES in the HITCHBOX (Fig. 3).

STEP 3

Screw HITCH PIN NUT onto HITCH PIN ; tighten HITCH PIN NUT until finger tight, ensuring TBM is restrained from movement.

STEP 4

Tighten HITCH PIN NUT by turning nut a further 1/8th of a turn in the clockwise direction using a 24mm spanner (Fig. 4).

STEP 5

Install HITCH PIN R CLIP through the hole on the HITCH PIN (Fig. 1).

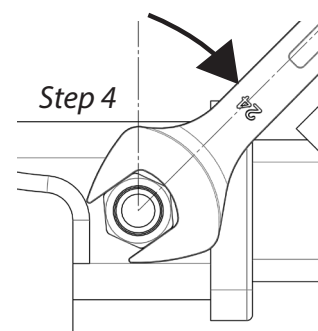


Fig 4. Tightening of Silent Anti-Rattle Hitch Pin Nut