

TRAILBOSS

Towbar Fitting Instructions
To Suit **ISUZU MU-X MY17 CL4**
Part Number **QTHD773L**
Rating **3000/300 kg**

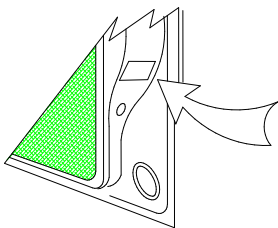
PLACE THESE INSTRUCTIONS IN THE VEHICLE'S GLOVEBOX AFTER INSTALLATION IS COMPLETED

WARNING:

1. Do not, drill, cut, weld or otherwise modify the tow bar.
2. If you are using electric welding on a motor vehicle, **always** check that the vehicle is not equipped with electronic engine or instrument management equipment. Failure to do so could **destroy** any onboard computers. If in doubt, check with the vehicle's manufacturer.
3. The high tensile fasteners supplied with this product were used to achieve the specified rating. If replacement is required ensure that fasteners of the same rating & quality are used. Contact an authorised **Trailboss** dealer if further information is required.
4. If TBM is used in inverted position tow ball may make contact with rear tailgate when lowered, which could cause damage.

General:

1. Ensure all hardware items have been included refer to assembly diagram.
2. It is recommended that the instructions are read through and completely understood before making any attempt to fit this product.
3. Be wary of any changes to vehicle designs or other accessories that may conflict with the installation of this product.
4. Before drilling ensure that the area is clear of fuel, electrical & other components.
5. All holes drilled into the body panels shall have all burrs & swarf removed then coated with a suitable rust preventative paint.
6. For vehicles that require the bumper to be cut. Ensure cut out area is in correct position on the vehicle prior to cutting the bumper.
7. The high tensile fasteners supplied with this product were used to achieve the specified rating. If replacement is required ensure that fasteners of the same rating & quality are used. Contact an authorized **Trailboss** dealer if further information is required.
8. Ensure that all hardware is fastened to torque list below check fasteners on regular basis.
9. Tow bar load rating sticker provided with this product shall be conspicuously located on inside rear end of the driver's door. **(See diagram below)**.
10. Trailboss recommends that you check your tow ball to ensure that it complies with the Australian standards **AS 4177.2**.
11. **PLEASE NOTE:** It is advised to remove your LUG or TBM when not actually towing so as to produce a clear view of the vehicles registration plate if obscured, and to also provide maximum available departure angle



Place load rating sticker
inside driver's door here

FOR TRAILER TOWING PURPOSES ONLY
For towing capacity details please refer to vehicle owner's manual or to the manufacturer. Overloading can void your warranties.

RECOMMENDED ASSEMBLY TORQUE LISTING

Diameter	Grade 8.8 Bolt
M6	9.5 Nm
M8	21.7 Nm
M10	43.4 Nm
M12	77.3Nm
M14	146 Nm
M16	189.8 Nm

Tow bar Maintenance and Care.

Trailboss recommends that bolt torque's, as listed below, are routinely and regularly inspected and checked for correct tension. Replace any worn or defective parts.

We recommended to remove Tow Ball Mounts (TBM's, tongues or lugs) when not being used for any considerable length of time.

So as to avoid injury, when not towing it is suggested that the tongue, Pull Pin and R-clip are removed then stored in a safe, clean and dry place, away from excessive moisture.

Hitch Pull Pins and spring "R" clips are regularly checked for proper installation. Replace any worn or defective parts.

Cequent Customer Service

Ph: 1800 812 017 Fax: 03 9898 3299

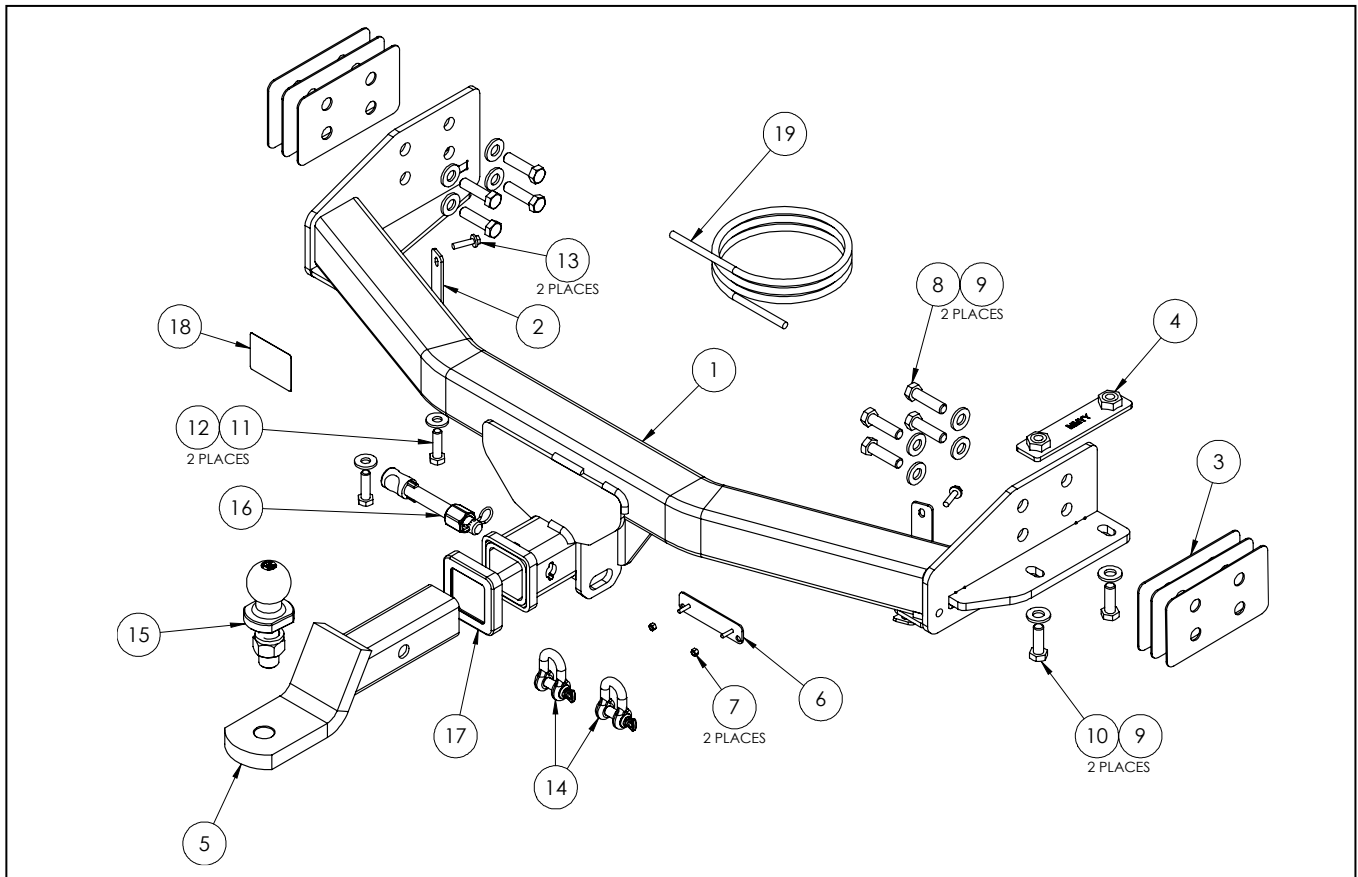
Email: info@cequent.com.au

Post: PO Box 4050, Dandenong South VIC 3175

TRAILBOSS

Towbar Fitting Instructions
 To Suit **ISUZU MU-X MY17 CL4**
 Part Number **QTHD773L**
 Rating **3000/300 kg**

PLACE THESE INSTRUCTIONS IN THE VEHICLE'S GLOVEBOX AFTER INSTALLATION IS COMPLETED



ITEM	DESCRIPTION	QTY
1	ISUZU MU-X MY17 CL4 WELDED ASSY	1
2	BUMPER TAB	2
3	SHIM 2MM	6
4	NUT PLATE	1
5	CLASS 4 TBM	1
6	VE PLUG BRACKET	1
7	NUT NYLON LOCK HEX HD M4x0.7P G8	2
8	SET SCREW HEX HD M12x45x1.25P G10.9	8
9	WASHER PLAIN 1/2x1-1/8x16G	10
10	M12x35x1.25	2

ITEM	DESCRIPTION	QTY
11	SET SCREW HEX HD M10x35x1.25P	2
12	WSHR FT M10x25.4x3	2
13	TEK SCREW 14-20 HEX HD 22MM	2
14	"D" SHACKLE 10MM	2
15	TOWBALL 50MM	1
16	SILENT HITCH PIN-SILVER	1
17	HITCH BOX COLLAR COVER	1
18	ACRYLIC COMPLIANCE LABEL	1
19	WIRING LOOM	1

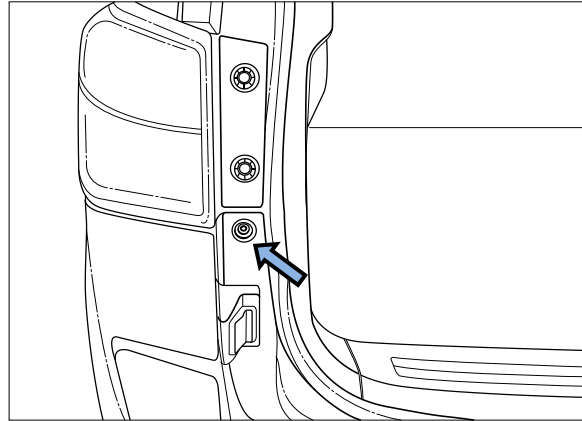
Cequent Customer Service
 Ph: 1800 812 017 Fax: 03 9898 3299
 Email: info@cequent.com.au
 Post: PO Box 4050, Dandenong South VIC 3175

TRAILBOSS

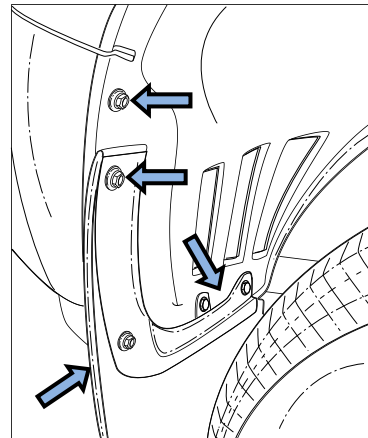
Towbar Fitting Instructions
To Suit **ISUZU MU-X MY17 CL4**
Part Number **QTHD773L**
Rating **3000/300 kg**

PLACE THESE INSTRUCTIONS IN THE VEHICLE'S GLOVEBOX AFTER INSTALLATION IS COMPLETED

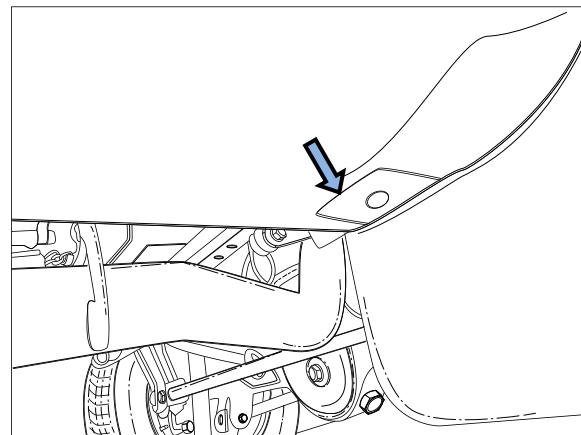
1. Release the Rear Tail gate to expose the Tail Light and inside lip of the Rear Bumper.
2. On LH side, remove 1x Set Screw securing the bumper.
Repeat for other side.



3. In LH wheel arch, remove the 4 x Set Screws securing the mud flap and bumper.
Repeat for other side.



4. Remove 1x scrivet on the underside of the Bumper.
Repeat for other side.
5. Along the underside of the Bumper, remove 3x scrivets.
6. Peel away the bumper from the sides and carefully remove the Bumper from the vehicle.
Ensure to disconnect the 2 x tail light plugs and 4x reverse parking sensor plugs and other sensors during this process.



Cequent Customer Service
Ph: 1800 812 017 Fax: 03 9898 3299
Email: info@cequent.com.au
Post: PO Box 4050, Dandenong South VIC 3175

Towbar Fitting Instructions
To Suit **ISUZU MU-X MY17 CL4**
Part Number **QTHD773L**
Rating **3000/300 kg**

PLACE THESE INSTRUCTIONS IN THE VEHICLE'S GLOVEBOX AFTER INSTALLATION IS COMPLETED

7. Remove the 3 x bumper tab brackets secured with 2 x flange nuts. Ensure to disconnect the centre brackets sensor harness prior to removal (depicted in image).

Lower the tyre to access to centre Bumper tab if required.

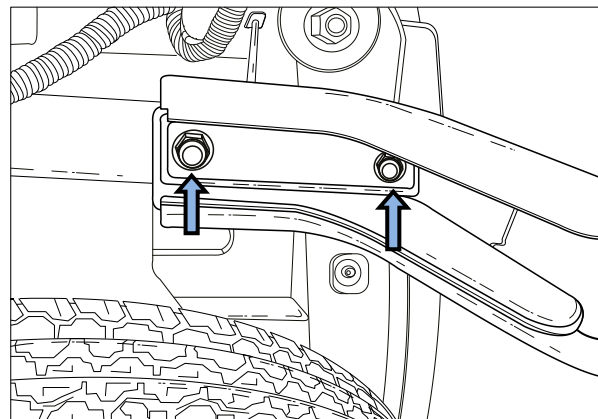
The LH and RH brackets can be discarded.



8. On the centre bumper tab bracket, remove the sensor, secured with 2 x scrivenets.
9. Mark off and cut the bracket as depicted (just below the bottom scrivet hole).
10. Deburr the cut edge and coat with a rust inhibitor.
11. Refit the sensor to the bumper tab bracket using the 2 scrivenets.
12. Refit the centre bracket to the vehicle and reconnect the harness.



13. Remove 2x Set Screws to remove the factory two Hook and discard.



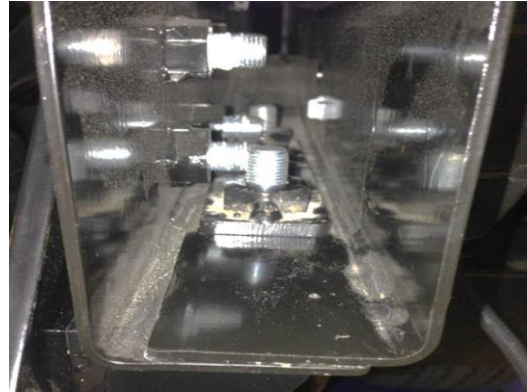
Cequent Customer Service
Ph: 1800 812 017 Fax: 03 9898 3299
Email: info@cequent.com.au
Post: PO Box 4050, Dandenong South VIC 3175

TRAILBOSS

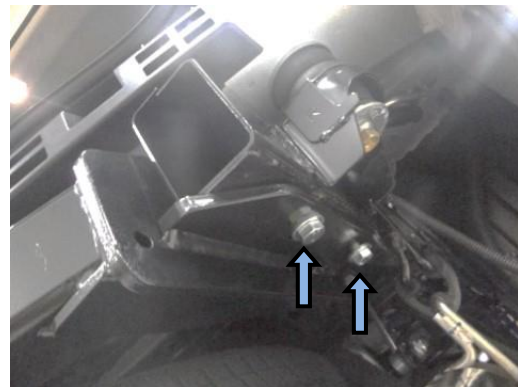
Towbar Fitting Instructions
To Suit **ISUZU MU-X MY17 CL4**
Part Number **QTHD773L**
Rating **3000/300 kg**

PLACE THESE INSTRUCTIONS IN THE VEHICLE'S GLOVEBOX AFTER INSTALLATION IS COMPLETED

14. Insert tapped plate into Drivers side Chassis rail.



15. Offer Towbar to vehicle and loosely secure to the underside of the RH chassis rail with 2 x M12 x 35 x 1.25 setscrew complete with 1 x M12 washer per setscrew into tapped plate. Loosely secure the LH underside with 2 x M10 x 35 x 1.25 setscrews complete with 1 x M10 washer per setscrew.



16. Centralise towbar and use the Shim plates supplied to ensure a snug fit between the side plates and Chassis Rail.

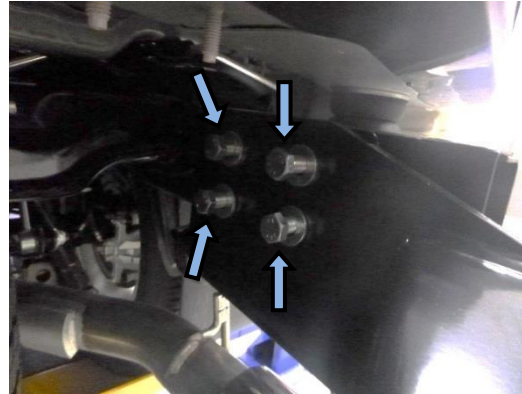


Cequent Customer Service
Ph: 1800 812 017 Fax: 03 9898 3299
Email: info@cequent.com.au
Post: PO Box 4050, Dandenong South VIC 3175

Towbar Fitting Instructions
To Suit **ISUZU MU-X MY17 CL4**
Part Number **QTHD773L**
Rating **3000/300 kg**

PLACE THESE INSTRUCTIONS IN THE VEHICLE'S GLOVEBOX AFTER INSTALLATION IS COMPLETED

17. With the shim plates in position, loosely secure the side arm to the chassis with 4 x M12 x 45 x 1.25 setscrews complete with 1 x M12 washer per setscrew. Repeat for other side.



18. Starting with the under chassis mountings, tighten all fasteners to the specified torque.

Torque Specification:

M10 x 35 (Gr 8.8)	: 48Nm
M12 x 35 (Gr8.8)	: 90 Nm
M12 x 45 Gr 10.9)	: 125Nm



19. Loosely secure the 2 x bumper tabs to the towbar using the supplied tek screws.



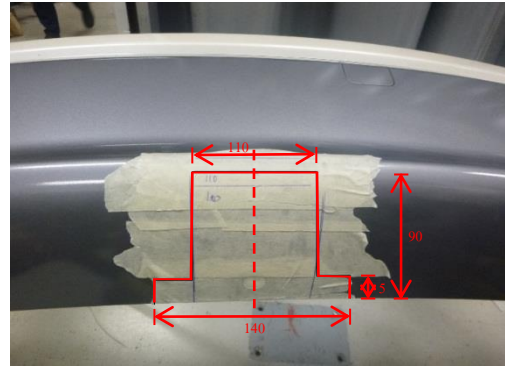
Cequent Customer Service
Ph: 1800 812 017 Fax: 03 9898 3299
Email: info@cequent.com.au
Post: PO Box 4050, Dandenong South VIC 3175

Towbar Fitting Instructions
To Suit **ISUZU MU-X MY17 CL4**
Part Number **QTHD773L**
Rating **3000/300 kg**

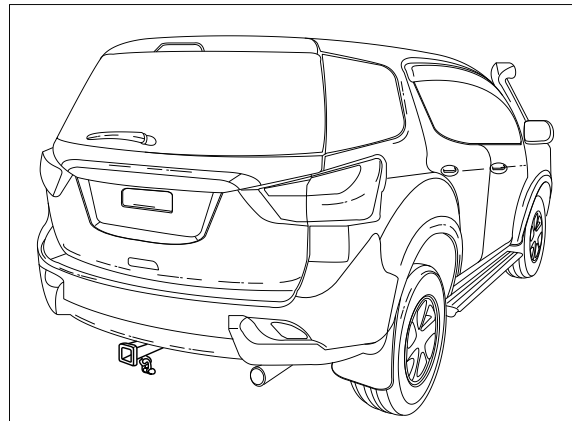
PLACE THESE INSTRUCTIONS IN THE VEHICLE'S GLOVEBOX AFTER INSTALLATION IS COMPLETED

20. Determine the centre of the Bumper (bumper tab hole) and use appropriate tools to create a bumper cut, 90mm wide and 110mm long following the outside surface, starting from the bottom edge of the Bumper. (The cut should stop below the Bumper style line)

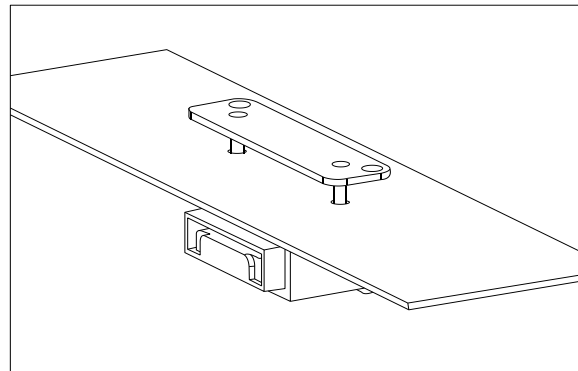
An additional cut of 140mm wide and 5mm long may be required for towbar clearance.



21. Reattach Bumper using steps 1-6 in reverse. Use previously removed scrivets to fix the bumper to the bumper tabs.



22. Determine an appropriate position for the plug bracket. Mark out and drill 2x ø5mm holes 69mm apart on bumper skin to support plug bracket.



Cequent Customer Service
Ph: 1800 812 017 Fax: 03 9898 3299
Email: info@cequent.com.au
Post: PO Box 4050, Dandenong South VIC 3175



Wiring Loom Fitting Instructions
To Suit ISUZU MU-X
Part Number 100055-WL

Wiring Loom Installation Instructions

ISUZU MU-X
Part No: 100055-WL

Tail Harness Length Required: 1200mm

Wiring Loom Installation Time: Approx 20 Mins



Wiring Loom Fitting Instructions
To Suit ISUZU MU-X
Part Number 100055-WL

1. Underneath the rear of the vehicle, locate and disconnect the LHS vehicle trailer break-out connector. **Note: Depending on the type of breakout connector presented at the vehicle, ensure to use the appropriate patch piece.**
2. Connect the trailer patch harness (P/No:100055-WL) to the LHS break-out connector.
3. From the outside rear of the vehicle, secure the tail harness (tail length: 1200mm) socket to the towbar mounting bracket using M4 fasteners (not supplied).
4. In the bumper cavity area, connect the tail harness 8-way connector to the trailer patch 8-way mating connector. **Waterproof the trailer patch 8-way connector and the tail harness 8-way male connector using silicone or grease.**
5. Test the Tail Harness socket using a light board or multi-meter.
6. Secure all harnesses using cables ties (not supplied).
7. Re-fit all removed parts and secure all fasteners ensuring there are no squeaks or rattles.
8. Place instructions in glove box after fitment.



FITTING INSTRUCTIONS

Silent Anti-Rattle Hitch Pin (PR0001)

• These fitting instructions are supplied to ensure understanding of how the HITCH PIN should be fitted and used correctly.

• Once installed, we recommend **ALL** instructions are kept and placed in the vehicle glove box.

NOTE: Routine maintenance and inspection of the towbar & HITCH PIN is required. Regularly inspect for wear and check the tightness of the Hitch Pin. Follow instructions below to retighten the nut when necessary.

***Do not tow with your vehicle if the R CLIP or the HITCH PIN is loose or missing. Replacement parts are available from your Pro Series Distributor.**

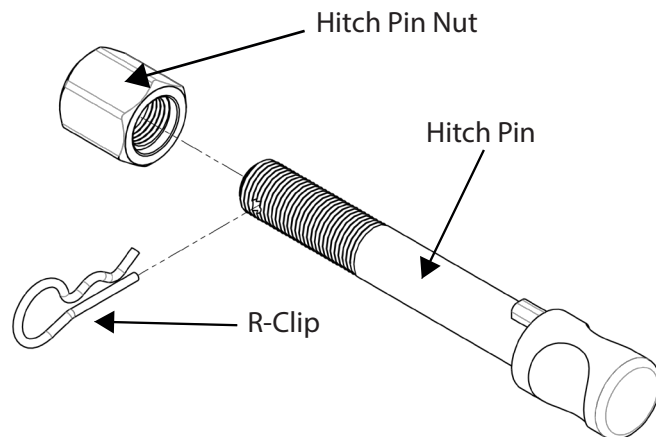


Fig 1. Silent Anti-Rattle Hitch Pin assembly

STEP 1

Insert Trailer Ball Mount (TBM) into towbar HITCHBOX, aligning hole in TBM SHANK with hole in HITCHBOX (Fig 2).

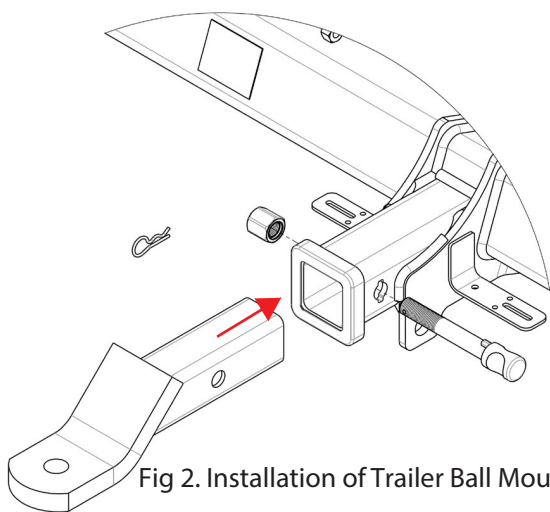


Fig 2. Installation of Trailer Ball Mount

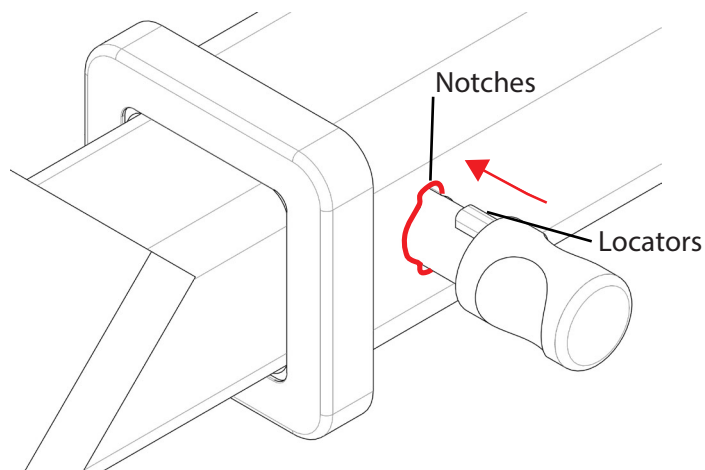


Fig 3. Silent Anti-Rattle Hitch Pin orientation

STEP 2

Insert HITCH PIN through hole in HITCHBOX and hole in TBM SHANK; ensure the LOCATORS are inserted into the NOTCHES in the HITCHBOX (Fig. 3).

STEP 3

Screw HITCH PIN NUT onto HITCH PIN ; tighten HITCH PIN NUT until finger tight, ensuring TBM is restrained from movement.

STEP 4

Tighten HITCH PIN NUT by turning nut a further 1/8th of a turn in the clockwise direction using a 24mm spanner (Fig. 4).

STEP 5

Install HITCH PIN R CLIP through the hole on the HITCH PIN (Fig. 1).

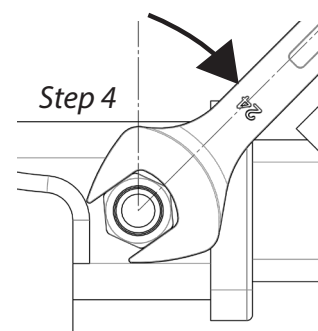


Fig 4. Tightening of Silent Anti-Rattle Hitch Pin Nut