

# TRAILBOSS

## Towbar Fitting Instructions To Suit **HYUNDAI i30 PD CL4** Part Number **QTHY265L** Rating **1300/75 kg**

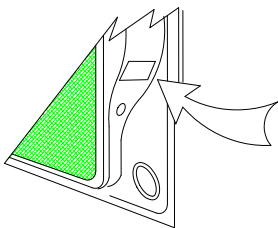
PLACE THESE INSTRUCTIONS IN THE VEHICLE'S GLOVEBOX AFTER INSTALLATION IS COMPLETED

### **WARNING:**

1. Do not, drill, cut, weld or otherwise modify the tow bar.
2. If you are using electric welding on a motor vehicle, **always** check that the vehicle is not equipped with electronic engine or instrument management equipment. Failure to do so could **destroy** any onboard computers. If in doubt, check with the vehicle's manufacturer.
3. The high tensile fasteners supplied with this product were used to achieve the specified rating. If replacement is required ensure that fasteners of the same rating & quality are used. Contact an authorised **Trailboss** dealer if further information is required.
4. If TBM is used in inverted position tow ball may make contact with rear tailgate when lowered, which could cause damage.

### **General:**

1. Ensure all hardware items have been included refer to assembly diagram.
2. It is recommended that the instructions are read through and completely understood before making any attempt to fit this product.
3. Be wary of any changes to vehicle designs or other accessories that may conflict with the installation of this product.
4. Before drilling ensure that the area is clear of fuel, electrical & other components.
5. All holes drilled into the body panels shall have all burrs & swarf removed then coated with a suitable rust preventative paint.
6. For vehicles that require the bumper to be cut. Ensure cut out area is in correct position on the vehicle prior to cutting the bumper.
7. The high tensile fasteners supplied with this product were used to achieve the specified rating. If replacement is required ensure that fasteners of the same rating & quality are used. Contact an authorized **Trailboss** dealer if further information is required.
8. Ensure that all hardware is fastened to torque list below check fasteners on regular basis.
9. Tow bar load rating sticker provided with this product shall be conspicuously located on inside rear end of the driver's door. **(See diagram below).**
10. Trailboss recommends that you check your tow ball to ensure that it complies with the Australian standards **AS 4177.2**.
11. **PLEASE NOTE:** It is advised to remove your LUG or TBM when not actually towing so as to produce a clear view of the vehicles registration plate if obscured, and to also provide maximum available departure angle



Place load rating sticker  
inside driver's door here

**FOR TRAILER TOWING PURPOSES ONLY**  
For towing capacity details please refer to vehicle owner's manual or to the manufacturer. Overloading can void your warranties.

### RECOMMENDED ASSEMBLY TORQUE LISTING

Diameter	Grade 8.8 Bolt
M6	9.5 Nm
M8	21.7 Nm
M10	43.4 Nm
M12	77.3Nm
M14	146 Nm
M16	189.8 Nm

### **Tow bar Maintenance and Care.**

Trailboss recommends that bolt torque's, as listed below, are routinely and regularly inspected and checked for correct tension. Replace any worn or defective parts.

We recommended to remove Tow Ball Mounts (TBM's, tongues or lugs) when not being used for any considerable length of time.

So as to avoid injury, when not towing it is suggested that the tongue, Pull Pin and R-clip are removed then stored in a safe, clean and dry place, away from excessive moisture.

Hitch Pull Pins and spring "R" clips are regularly checked for proper installation. Replace any worn or defective parts.

### **Cequent Customer Service**

Ph: 1800 812 017 Fax: 03 9898 3299

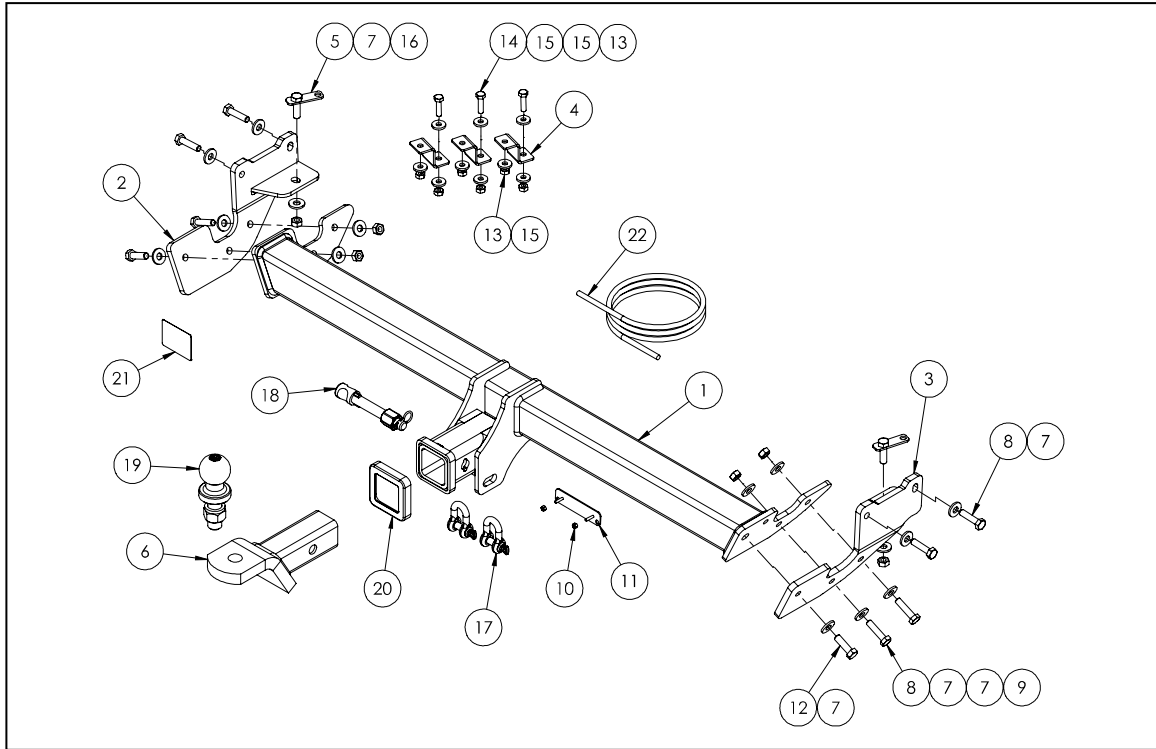
Email: [info@cequent.com.au](mailto:info@cequent.com.au)

Post: PO Box 4050, Dandenong South VIC 3175

# TRAILBOSS

Towbar Fitting Instructions  
 To Suit **HYUNDAI i30 PD CL4**  
 Part Number **QTHY265L**  
 Rating **1300/75 kg**

PLACE THESE INSTRUCTIONS IN THE VEHICLE'S GLOVEBOX AFTER INSTALLATION IS COMPLETED



ITEM	DESCRIPTION	QTY
1	HYUNDAI I30 PD CL4 WELDED ASSY	1
2	SIDE ARM ASSY LH	1
3	SIDE ARM ASSY RH	1
4	TANK BRACKET	3
5	T BOLT ASSEMBLY	2
6	TRAILER BALL MOUNT	1
7	WASHER PLAIN M10 X 25 X 3	16
8	BOLT HEX HD M10 X 40 X 1.25P G10.9	8
9	NUT HEX HD M10 X 1.25P G8	4
10	VE PLUG BRACKET	1
11	NUT NYLON LOCK HEX HD M4X0.7P G8	2

ITEM	DESCRIPTION	QTY
12	BOLT M10-1.50 x 35 10.9	2
13	M8 - 1.25 NUT	6
14	SETSCREW HEX HD M8X30X1.25P G8.8	3
15	WASHER PLAIN M8 X 22 X 3	9
16	HEX NUT M10x1.5	2
17	10mm "D" SHACKLE	2
18	SILENT HITCH PIN - SILVER	1
19	50mm TOWBALL	1
20	HITCH BOX COLLAR COVER	1
21	ACRYLIC COMPLIANCE LABEL	1
22	WIRING LOOM	1

**Cequent Customer Service**  
 Ph: 1800 812 017 Fax: 03 9898 3299  
 Email: [info@cequent.com.au](mailto:info@cequent.com.au)  
 Post: PO Box 4050, Dandenong South VIC 3175

# TRAILBOSS

Towbar Fitting Instructions  
To Suit **HYUNDAI i30 PD CL4**  
Part Number **QTHY265L**  
Rating **1300/75 kg**

PLACE THESE INSTRUCTIONS IN THE VEHICLE'S GLOVEBOX AFTER INSTALLATION IS COMPLETED

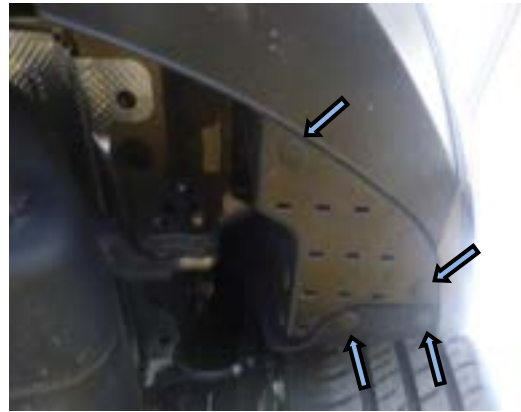
1. Inside wheel arch remove 3 x screws and 1 x scrivet.

Repeat for other side



2. Under bumper remove 4 x scrivets securing plastic protector.

Repeat for other side.



3. Open tailgate to expose the taillight assembly securing screw covers. Open 2 x covers and remove the exposed screw.

Repeat for other side.



**Cequent Customer Service**  
Ph: 1800 812 017 Fax: 03 9898 3299  
Email: [info@cequent.com.au](mailto:info@cequent.com.au)  
Post: PO Box 4050, Dandenong South VIC 3175

# TRAILBOSS

Towbar Fitting Instructions  
To Suit **HYUNDAI i30 PD CL4**  
Part Number **QTHY265L**  
Rating **1300/75 kg**

PLACE THESE INSTRUCTIONS IN THE VEHICLE'S GLOVEBOX AFTER INSTALLATION IS COMPLETED

4. Remove taillight assembly by applying force rearwards.
5. Pull out the harness grommet from the body panel and disconnect the taillight assembly harness.

Repeat for other side.



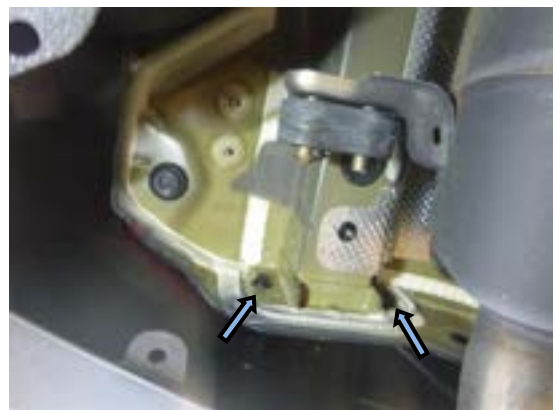
6. In the light cavity, remove 1 x scrivet and 1 x screw.

Repeat for other side.



7. Under vehicle remove 4 x bolts securing the impact beam to the vehicle. ( 2 x LH and 2 x RH side).

Retain the bolts for fitment.



**Cequent Customer Service**

Ph: 1800 812 017 Fax: 03 9898 3299

Email: [info@cequent.com.au](mailto:info@cequent.com.au)

Post: PO Box 4050, Dandenong South VIC 3175

# TRAILBOSS

Towbar Fitting Instructions  
To Suit **HYUNDAI i30 PD CL4**  
Part Number **QTHY265L**  
Rating **1300/75 kg**

PLACE THESE INSTRUCTIONS IN THE VEHICLE'S GLOVEBOX AFTER INSTALLATION IS COMPLETED

8. Peel away from sides and remove bumper. Disconnect wiring harness located on the LH side.



9. Under vehicle, to assist with clearance for towbar fitment, remove plastic protector secured with 2 x push on nut retainers.

Repeat for other side.



10. Under vehicle on LH side temporarily remove the tank from the chassis rail, secured with 3 x push on retainers. Do not disconnect any of the tubing.



**Cequent Customer Service**  
Ph: 1800 812 017 Fax: 03 9898 3299  
Email: [info@cequent.com.au](mailto:info@cequent.com.au)  
Post: PO Box 4050, Dandenong South VIC 3175

# TRAILBOSS

Towbar Fitting Instructions  
To Suit **HYUNDAI i30 PD CL4**  
Part Number **QTHY265L**  
Rating **1300/75 kg**

PLACE THESE INSTRUCTIONS IN THE VEHICLE'S GLOVEBOX AFTER INSTALLATION IS COMPLETED

11. On chassis rail, remove rubber grommet and insert the T Bolt assembly.
12. Scrape away excessive rubber sealant from the chassis side between the weld nut holes where required.

Repeat for other side.



13. Loosely secure side arm assembly to the vehicle with 2 x M10 bolts complete with 1 x washer per bolt and 1 x M10 nut complete with 1 x washer.

Repeat for other side.



14. Lift crosstube to side arms and secure each side with 3 x M10 bolts complete with 2 x washers and 1 x M10 nut per bolt.

**Position the towbar and torque all fasteners accordingly:**

**M10: 70Nm**



**Cequent Customer Service**

Ph: 1800 812 017 Fax: 03 9898 3299

Email: [info@cequent.com.au](mailto:info@cequent.com.au)

Post: PO Box 4050, Dandenong South VIC 3175

Towbar Fitting Instructions  
To Suit **HYUNDAI i30 PD CL4**  
Part Number **QTHY265L**  
Rating **1300/75 kg**

PLACE THESE INSTRUCTIONS IN THE VEHICLE'S GLOVEBOX AFTER INSTALLATION IS COMPLETED

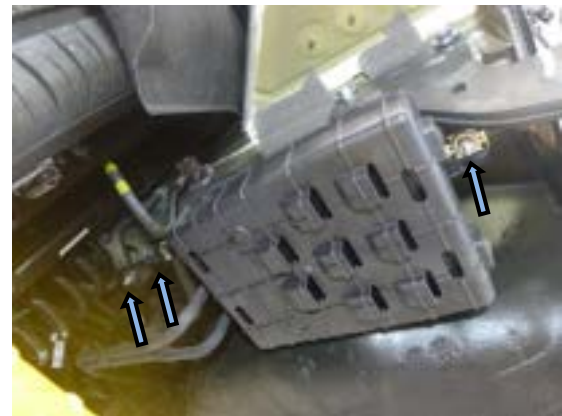
15. Under LH chassis loosely secure 3 x tank brackets to the chassis studs with 1 x M8 nut complete with 1 x washer.
16. Fit 1 x M8 bolt complete with 1 x washer to the open hole on the 3 x tank brackets.



17. Align the mounting holes and loosely secure the tank to the 3 x brackets with 1 x M8 nut complete with 1x washer.

Position the tank and ensure no fouling conditions can to the tank or other components (tubes/piping) specifically in the coilspring area.

**Tighten all fasteners to 22Nm.**



18. On inside of bumper, remove the centre bumper bracket scrivet and cut off the centre bracket from the impact beam.



**Cequent Customer Service**  
Ph: 1800 812 017 Fax: 03 9898 3299  
Email: [info@cequent.com.au](mailto:info@cequent.com.au)  
Post: PO Box 4050, Dandenong South VIC 3175

# TRAILBOSS

Towbar Fitting Instructions  
To Suit **HYUNDAI i30 PD CL4**  
Part Number **QTHY265L**  
Rating **1300/75 kg**

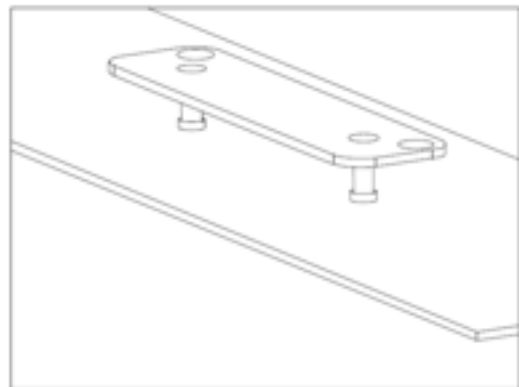
PLACE THESE INSTRUCTIONS IN THE VEHICLE'S GLOVEBOX AFTER INSTALLATION IS COMPLETED

19. On the outside of the bumper locate the centre, mark out and cut 90mm wide by 210 length measured from the bottom edge of the bumper.  
NOTE: The cut should end just below the bumper lower style line.



20. Reattach removed components by following steps 1-9 in reverse.

21. On the bumper locate a suitable position, mark out and drill 2 x  $\varnothing$ 5mm holes 69mm apart on bumper skin to support plug bracket.



**Cequent Customer Service**  
Ph: 1800 812 017 Fax: 03 9898 3299  
Email: [info@cequent.com.au](mailto:info@cequent.com.au)  
Post: PO Box 4050, Dandenong South VIC 3175





Wiring Loom Fitting Instructions  
To Suit Hyundai i30  
Part Number 101874-WL

## Wiring Loom Installation Instructions

Hyundai i30  
Part No: 101874-WL  
ECU: 04826 (Non Branded if available)  
Tail Harness Part No: 04936  
RPA Disable Information: Via Console  
Electric Brake Wire Location: Blue Wire Near ECU Connector

Wiring Loom Installation Time: Approx 70 Mins



Wiring Loom Fitting Instructions  
To Suit Hyundai i30  
Part Number 101874-WL

1. Note down the clock and radio settings.
2. Disconnect the negative battery terminal.
3. In the luggage compartment, remove the carpet.
4. Remove the parcel shelf.
5. Remove the luggage compartment scuff plate, by first removing the three tree clips and pulling trim in an upwards direction.
6. On the LHS on the upper compartment trim, remove the two plastic caps.  
Repeat for the RHS.
7. Remove the two 10mm bolts.  
Repeat for the RHS.
8. Remove the upper trim, by pulling towards the centre of the vehicle.  
Repeat for the RHS.
9. Remove the bolts and tree clip from the LHS lower luggage compartment trim.  
Repeat for the RHS.
10. Carefully flex the LHS lower luggage compartment trim towards the middle of the vehicle.  
Repeat for the RHS.
11. Lift the bottom of the seat, pulling in an upwards direction.
12. Release the two screws and remove the RHS rear door sill trim.
13. Remove the RHS front door sill trim.
14. Remove the bonnet release handle.
15. Remove the RHS kick panel trim.
16. Remove the fuse access panel.
17. In the LHS of the luggage compartment, disconnect the vehicle tail light 6-way connector and patch in the trailer wiring mating connectors.
18. Connect the Trailer Lamp ECU to the 12-way connector.
19. Adhere the Double Sided Tape to the back of the ECU.
20. Mount the ECU to the sheet metal below the LHS luggage compartment trim.
21. Route the trailer wiring harness to the RHS.



Wiring Loom Fitting Instructions  
To Suit Hyundai i30  
Part Number 101874-WL

22. On the RHS of the luggage compartment, secure the Trailer Harness ground ring terminal to the vehicle stud using an M6 Flange Nut (not supplied).
23. Disconnect the vehicle tail light connector and patch in the trailer wiring mating connectors.
24. For reverse connection, route the trailer patch black/white wire branch up to the rear head lining. Locate the harness that runs towards the vehicle tailgate then, following the table below, connect the ezy-tap to the mating harness wire. Then connect the trailer patch wire to the ezy-tap.

Function	Trailer Patch	Vehicle Harness
Reverse	BLACK/WHITE	BLUE

Note: Test the vehicle wires first to confirm the functions.

25. Locate and remove the vehicle grommet. Drill out to 30mm
26. Route the Blue Connector through the vehicle grommet hole in the LHS rear quarter panel of the luggage compartment and seat the grommet in the 30mm hole.  
Note: Ensure the grommet is seated correctly and makes a good seal.
27. Disconnect the vehicle 12-way connector from the rear bumper fascia and patch the RPA Cut-off Harness 12-way connectors in between.
28. In the RHS passenger seat remove the door seal.
29. Flex rear trim slightly to allow enough across to route power harness.
30. Route the female connector on the supplied power harness through to the rear of the vehicle.
31. On the RHS of the luggage compartment, connect the Trailer Wiring Harness 1-way male connector to the Power Cable 1-way female mating connector.
32. Following the existing vehicle harness, route the Trailer Wiring Harness Power Cable along the RHS rear passenger door sill and past the 'B' pillar, ensuring the Trailer Wiring Harness Power Cable is tucked under the 'B' pillar trim.
33. Following the existing vehicle harness, continue routing the Trailer Wiring Harness Power Cable past the RHS driver's door sill and towards the fuse panel.
34. Continue routing the Trailer Wiring Harness Power Cable up towards the fuse panel.
35. On the fuse panel, locate and remove the vehicle 20A fuse.
36. Insert the vehicle 20A fuse into the upper slot of the supplied Add-a-Fuse.
37. Insert the supplied 20A Fuse into the lower slot of the Add-a-Fuse.



Wiring Loom Fitting Instructions  
To Suit Hyundai i30  
Part Number 101874-WL

38. Insert the supplied Add-a-Fuse in correct orientation, into the location previously occupied by the vehicle 20A fuse.  
Note: To maintain correct electrical operation, ensure you insert the Add-a-Fuse into the allocated slot.
39. Connect the Add-a-Fuse 1-way female connector to its mating 1-way male connector on the Trailer Wiring Harness Power Cable.
40. With the rear bumper removed, secure tail harness (04936) to towbar.
41. Route tail harness up towards LHS rear quarter.
42. Connect the tail harness 8-way connector to the trailer patch 8-way mating connector.
43. Connect wires with crimp, GREY and GREY/Black wires to the RPA patch matching PURPLE and PINK wires and insulate connections.
44. Apply silicone grease to waterproof the connector.
45. Refit tail lights.
46. The RPA function can be disabled via a switch on the dash.
47. Test the trailer patch function using a light board or multi-meter.
48. Secure harness using cable ties (not supplied).
49. Re-fit all removed parts and secure all fasteners, ensuring there are no squeaks or rattles.
50. Place the fitting instructions in the glove box after fitment.



# FITTING INSTRUCTIONS

## Silent Anti-Rattle Hitch Pin (PR0001)

• These fitting instructions are supplied to ensure understanding of how the HITCH PIN should be fitted and used correctly.

• Once installed, we recommend **ALL** instructions are kept and placed in the vehicle glove box.

**NOTE: Routine maintenance and inspection of the towbar & HITCH PIN is required. Regularly inspect for wear and check the tightness of the Hitch Pin. Follow instructions below to retighten the nut when necessary.**

**\*Do not tow with your vehicle if the R CLIP or the HITCH PIN is loose or missing. Replacement parts are available from your Pro Series Distributor.**

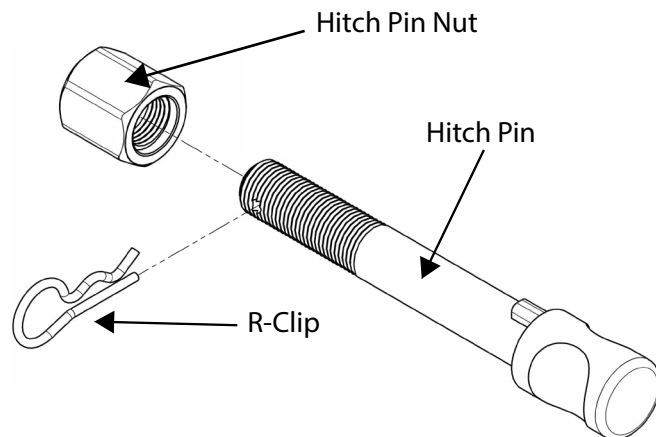


Fig 1. Silent Anti-Rattle Hitch Pin assembly

### STEP 1

Insert Trailer Ball Mount (TBM) into towbar HITCHBOX, aligning hole in TBM SHANK with hole in HITCHBOX (Fig 2).

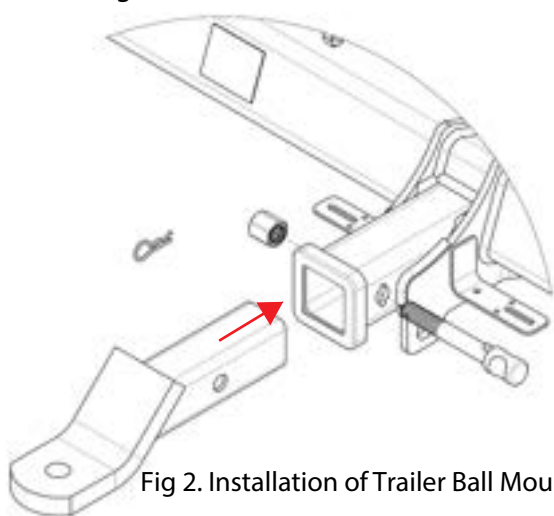


Fig 2. Installation of Trailer Ball Mount

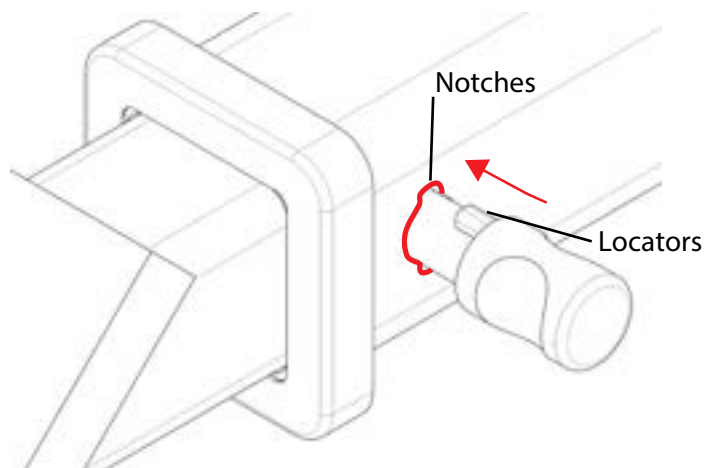


Fig 3. Silent Anti-Rattle Hitch Pin orientation

### STEP 2

Insert HITCH PIN through hole in HITCHBOX and hole in TBM SHANK; ensure the LOCATORS are inserted into the NOTCHES in the HITCHBOX (Fig. 3).

### STEP 3

Screw HITCH PIN NUT onto HITCH PIN ; tighten HITCH PIN NUT until finger tight, ensuring TBM is restrained from movement.

### STEP 4

Tighten HITCH PIN NUT by turning nut a further 1/8th of a turn in the clockwise direction using a 24mm spanner (Fig. 4).

### STEP 5

Install HITCH PIN R CLIP through the hole on the HITCH PIN (Fig. 1).

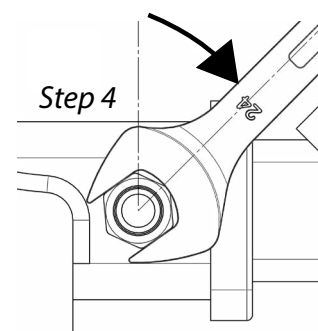


Fig 4. Tightening of Silent Anti-Rattle Hitch Pin Nut