

TRAILBOSS

Towbar Fitting Instructions To Suit **IVECO DAILY LWB VAN** on Part Number **QTIV01L** Rating **2000 kg**

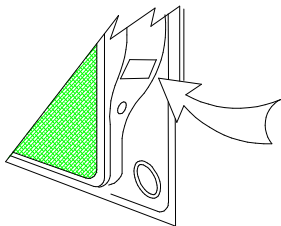
PLACE THESE INSTRUCTIONS IN THE VEHICLE'S GLOVEBOX AFTER INSTALLATION IS COMPLETE

WARNING:

1. Do not, drill, cut, weld or otherwise modify the tow bar.
2. If you are using electric welding on a motor vehicle, **always** check that the vehicle is not equipped with electronic engine or instrument management equipment. Failure to do so could **destroy** any onboard computers. If in doubt, check with the vehicle's manufacturer.
3. The high tensile fasteners supplied with this product were used to achieve the specified rating. If replacement is required ensure that fasteners of the same rating & quality are used. Contact an authorised **Trailboss** dealer if further information is required.

General:

1. Ensure all hardware items have been included refer to assembly diagram.
2. It is recommended that the instructions are read through and completely understood before making any attempt to fit this product.
3. Be wary of any changes to vehicle designs or other accessories that may conflict with the installation of this product.
4. Before drilling ensure that the area is clear of fuel, electrical & other components.
5. All holes drilled into the body panels shall have all burrs & swarf removed then coated with a suitable rust preventative paint.
6. For vehicles that require the bumper to be cut. Ensure cut out area is in correct position on the vehicle prior to cutting the bumper.
7. The high tensile fasteners supplied with this product were used to achieve the specified rating. If replacement is required ensure that fasteners of the same rating & quality are used. Contact an authorized **Trailboss** dealer if further information is required.
8. Ensure that all hardware is fastened to torque list below check fasteners on regular basis.
9. Tow bar load rating sticker provided with this product shall be conspicuously located on inside rear end of the driver's door. **(See diagram below)**.
10. Trailboss recommends that you check your tow ball to ensure that it complies with the Australian standards **AS 4177.2**.
11. **PLEASE NOTE:** It is advised to remove your lug or tbn when not actually towing so as to produce a clear view of the vehicles registration plate if obscured, and to also provide maximum available departure angle
12. Pull Pin must be fit in down position.



Place load rating sticker
inside driver's door here

FOR TRAILER TOWING PURPOSES ONLY
For towing capacity details please refer to vehicle owner's manual or to the manufacturer. Overloading can void your warranties.

RECOMMENDED ASSEMBLY TORQUE LISTING

Diameter	Grade 8.8 Bolt
M6	9.5 Nm
M8	21.7 Nm
M10	43.4 Nm
M12	77.3Nm
M14	146 Nm
M16	189.8 Nm

Tow bar Maintenance and Care.

Trailboss recommends that bolt torque's, as listed below, are routinely and regularly inspected and checked for correct tension. Replace any worn or defective parts.

We recommended to remove Tow Ball Mounts (TBM's, tongues or lugs) when not being used for any considerable length of time.

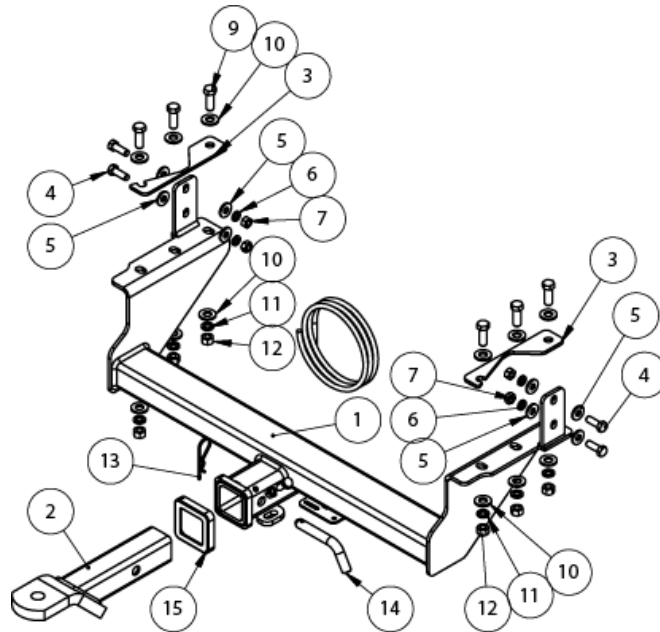
So as to avoid injury, when not towing it is suggested that the tongue, Pull Pin and R-clip are removed then stored in a safe, clean and dry place, away from excessive moisture.

Hitch Pull Pins and spring "R" clips are regularly checked for proper installation. Replace any worn or defective parts.

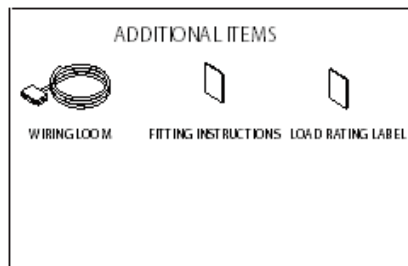


Towbar Fitting Instructions
 To Suit **IVECO DAILY LWB VAN** on
 Part Number **QTIV01L**
 Rating **2000 kg**

PLACE THESE INSTRUCTIONS IN THE VEHICLE'S GLOVEBOX AFTER INSTALLATION IS COMPLETE



QTY.	DESCRIPTION	ITEM NO.
1	WELDED ASSEMBLY - IVECO DAILY	1
1	TRILER BALL MOUNT	2
2	LOOSE PACKER PL	3
4	BOLT HEX M10 x 30 x 1.5P	4
8	WSHR FT M10 x 25.4 x 3	5
4	M10 x 3.5 x 2.2 SPRING WSHR	6
5	HEX NUT M10 x 1.5	7
1	BOLT M10 x 1.50 x 25	8
6	M12 x 35 x 1.75 P BOLT	9
12	M14 x 28 x 3 Z/P FT WASHER	10
6	WSHR SPRING FT SEC M12x4.0x2.5mm	11
6	M12 x 1.75 HEX NUT PCB	12
1	R CLIP	13
1	PULL PIN	14
1	HITCH BOX COLLAR COVER	15





Towbar Fitting Instructions
To Suit **IVECO DAILY LWB VAN** on
Part Number **QTIV01L**
Rating **2000 kg**

PLACE THESE INSTRUCTIONS IN THE VEHICLE'S GLOVEBOX AFTER INSTALLATION IS COMPLETE

1. Fit Towbar from Underneath of Vehicle .Remove 2 Bolts and Nuts from Cross Beam Support. (LH &RH Sides of vehicle)
2. Remove Bolt and Nut from Step Bracket. (LH & RH Sides of vehicle).
3. Raise Towbar upto Chassis, by aligning Holes in Side Plate with Holes in Chassis. Insert Centre Bolt with Flat Washer through Chassis wall and Side Plate. Loosely Tighten it .LH &RH Sides of vehicle)
4. Insert Loose Packer Plates in between Chassis and Side Plate .Insert remaining M12 Bolts with Flat Washers through Chassis ,it guide through Spacer Plate & Side Plate and Secure with Flat and Spring Washer and Nut.(LH & RH sides of vehicle)
5. Insert M10 Bolt with Flat Washer through Side Mount Plate ,Secure with Flat and Spring Washer and Nut .(LH and RH Sides of vehicle)
6. Tighten all M12 Bolts to Torque Settings Listed and then tighten all M10 Bolts to Torque settings listed on Page2.



Wiring Loom Fitting Instructions
To Suit Iveco Daily Cab Chassis & Van
Part Number FW1003-WL

Wiring Loom Installation Instructions

Iveco Daily Cab Chassis & Van
Part No: FW1003-WL

Tail Harness Length Required: 1200mm

Wiring Loom Installation Time: Approx 10 Mins



Wiring Loom Fitting Instructions
To Suit Iveco Daily Cab Chassis & Van
Part Number FW1003-WL

1. On the rear of the vehicle, behind the RHS tail light, locate the 12-way break out connector.
2. Remove the 12-way break out connector cap.
3. Disconnect the 12-way connector and connect the mating trailer patch connector.
4. From the outside of the vehicle, mount the trailer socket on the towbar mounting bracket using M4 fasteners (not supplied).
5. Route the tail harness (tail length 1200mm) across the towbar towards the RHS of the vehicle.
6. Secure the tail harness using cable ties (not supplied).
7. Connect the tail harness 8-way connector to the trailer harness mating 8-way connector.
8. Test the Trailer Harness function using a Light Board or multimeter.
9. Secure all Harnesses using cables ties (not supplied).
10. Re-fit all removed parts and secure all fasteners, ensuring there are no squeaks or rattles.
11. Place instructions in glove box after fitment.