



Towbar Fitting Instructions  
 To Suit **RENAULT MASTER CAB CHASSIS 13-ON**  
 Part Number **QTRE14L**  
 Rating **3000/300 kg**

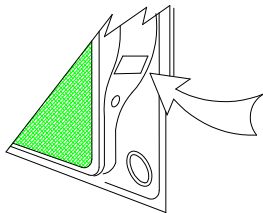
PLACE THESE INSTRUCTIONS IN THE VEHICLE'S GLOVEBOX AFTER INSTALLATION IS COMPLETED

**WARNING:**

1. Do not, drill, cut, weld or otherwise modify the tow bar.
2. If you are using electric welding on a motor vehicle, **always** check that the vehicle is not equipped with electronic engine or instrument management equipment. Failure to do so could **destroy** any onboard computers. If in doubt, check with the vehicle's manufacturer.
3. The high tensile fasteners supplied with this product were used to achieve the specified rating. If replacement is required ensure that fasteners of the same rating & quality are used. Contact an authorised **Trailboss** dealer if further information is required.
4. If TBM is used in inverted position tow ball may make contact with rear tailgate when lowered, which could cause damage.

**General:**

1. Ensure all hardware items have been included refer to assembly diagram.
2. It is recommended that the instructions are read through and completely understood before making any attempt to fit this product.
3. Be wary of any changes to vehicle designs or other accessories that may conflict with the installation of this product.
4. Before drilling ensure that the area is clear of fuel, electrical & other components.
5. All holes drilled into the body panels shall have all burrs & swarf removed then coated with a suitable rust preventative paint.
6. For vehicles that require the bumper to be cut. Ensure cut out area is in correct position on the vehicle prior to cutting the bumper.
7. The high tensile fasteners supplied with this product were used to achieve the specified rating. If replacement is required ensure that fasteners of the same rating & quality are used. Contact an authorized **Trailboss** dealer if further information is required.
8. Ensure that all hardware is fastened to torque list below check fasteners on regular basis.
9. Tow bar load rating sticker provided with this product shall be conspicuously located on inside rear end of the driver's door. **(See diagram below).**
10. Trailboss recommends that you check your tow ball to ensure that it complies with the Australian standards **AS 4177.2**.
11. **PLEASE NOTE:** It is advised to remove your lug or tbm when not actually towing so as to produce a clear view of the vehicles registration plate if obscured, and to also provide maximum available departure angle
12. Pull Pin must be fit in down position.



Place load rating sticker inside driver's door here

**FOR TRAILER TOWING PURPOSES ONLY**  
 For towing capacity details please refer to vehicle owner's manual or to the manufacturer. Overloading can void your warranties.

**RECOMMENDED ASSEMBLY TORQUE LISTING**

Diameter	Grade 8.8 Bolt
M6	9.5 Nm
M8	21.7 Nm
M10	43.4 Nm
M12	77.3Nm
M14	146 Nm
M16	189.8 Nm

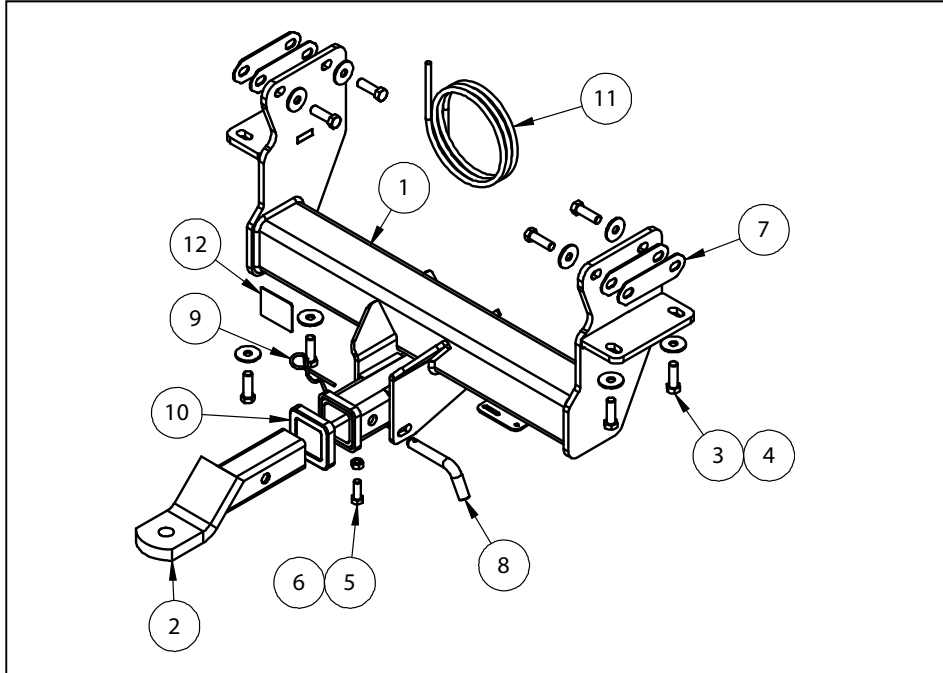
**Tow bar Maintenance and Care.**

Trailboss recommends that bolt torque's, as listed below, are routinely and regularly inspected and checked for correct tension. Replace any worn or defective parts.  
 We recommended to remove Tow Ball Mounts (TBM's, tongues or lugs) when not being used for any considerable length of time.  
 So as to avoid injury, when not towing it is suggested that the tongue, Pull Pin and R-clip are removed then stored in a safe, clean and dry place, away from excessive moisture.  
 Hitch Pull Pins and spring "R" clips are regularly checked for proper installation. Replace any worn or defective parts.

# TRAILBOSS

Towbar Fitting Instructions  
To Suit **RENAULT MASTER CAB CHASSIS 13-ON**  
Part Number **QTRE14L**  
Rating **3000/300 kg**

PLACE THESE INSTRUCTIONS IN THE VEHICLE'S GLOVEBOX AFTER INSTALLATION IS COMPLETED



QTY	DESCRIPTION	ITEM NO
1	RENAULT MASTER WELDED ASSY	1
1	T.B.MOUNT ASSEMBLY	2
8	SET SCREW M12X40X1.75P	3
8	WASHER FT M12X37X3MM	4
1	SET SCREW HEX HD M10X30X1.5P	5
1	HEX NUT M10X1.5	6
4	SHIM PLATE	7
1	PULL PIN	8
1	R CLIP	9
1	HITCH BOX COLLAR COVER	10
1	WIRING LOOM	11
1	ACRYLIC COMPLIANCE PLATE	12



Towbar Fitting Instructions  
To Suit **RENAULT MASTER CAB CHASSIS 13-ON**  
Part Number **QTRE14L**  
Rating **3000/300** kg

PLACE THESE INSTRUCTIONS IN THE VEHICLE'S GLOVEBOX AFTER INSTALLATION IS COMPLETED

**INSTRUCTION:**

1. Remove 4 x Bolts on each Chassis Rail, located on lower and inside faces. Dispose of Bolts after removal.  
Disconnect brush plug securing wiring harness to Chassis Rail.
2. Mount Towbar to vehicle, aligning mount holes with those in the chassis rail.  
Use supplied set screws to lightly secure the Towbar to the Chassis Rails. Use Shim Plates as required.
3. Torque all Set Screws to torque specified on page 1.



Wiring Loom Fitting Instructions  
To Suit Renault Master Cab Chassis  
Part Number 101014-WL

Wiring Loom Installation Instructions

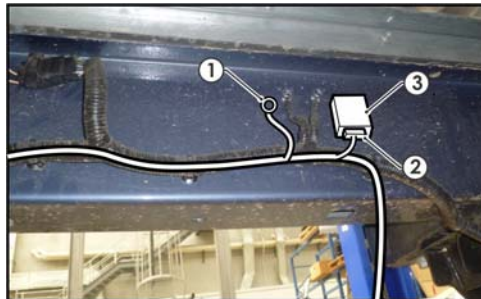
Renault Master Cab Chassis  
Part No: 101014-WL  
ECU Required: WLT030

Tail Harness Length Required: 1200mm

Wiring Loom Installation Time: Approx 15 Mins

## Wiring Loom Fitting Instructions To Suit Renault Master Cab Chassis Part Number 101014-WL

1. Access the break out connector from the LHS rear quarter area, disconnect the blanking connector and patch the Trailer Patch (P/No: 101014-WL) connectors in between.
2. Secure the Trailer Patch ground ring terminal (1) using a tek screw (not supplied) to a suitable location on the vehicle sheet metal area (2) near the vehicle grounding point. Connect the Trailer Patch ECU connector (2) to the ECU (P/No: WLT030) (3) and secure to a suitable location on the vehicle sheet metal using tek screws (not supplied).



3. Remove the six torx screws from the front passenger step trim.
4. Route the power harness from battery towards the rear of the vehicle following the existing vehicle harness. **(Note: Do not connect the vehicle battery at this point)**
5. Route power harness along the vehicle towards the rear of the vehicle. Connect the power harness to the 1-way connector.
6. Secure the Tail Harness (tail length: 1200mm) to the vehicle towbar mounting bracket using the supplied M4 fasteners. Route the tail harness along the towbar towards the LHS.
7. Connect the tail harness (tail length 1200mm) 8-way connector to the trailer patch mating 8-way connector. Using electrical grease or silicone, waterproof the rear of the connectors and then tape up with electrical tape.
8. Connect the power to the battery.
9. Connect Test the trailer patch function using a light board or multimeter.
10. Secure all harnesses using cable ties (not supplied).
11. Re-fit all removed parts and secure all fasteners, ensuring there are no squeaks or rattles.
12. Place the instructions in the glove box compartment after fitment.