

TRAILBOSS

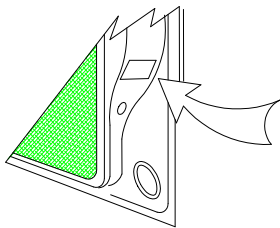
Towbar Fitting Instructions
To Suit **SaanyYong Rexton 03 / 04 Onwards**
Part Number **QTSY202L**
Rating **2270-227 kg**

WARNING:

1. Do not, drill, cut, weld or otherwise modify the tow bar.
2. If you are using electric welding on a motor vehicle, **always** check that the vehicle is not equipped with electronic engine or instrument management equipment. Failure to do so could **destroy** any onboard computers. If in doubt, check with the vehicle's manufacturer.
3. The high tensile fasteners supplied with this product were used to achieve the specified rating. If replacement is required ensure that fasteners of the same rating & quality are used. Contact an authorised **Trailboss** dealer if further information is required.

General:

1. Ensure all hardware items have been included refer to assembly diagram.
2. It is recommended that the instructions are read through and completely understood before making any attempt to fit this product.
3. Be wary of any changes to vehicle designs or other accessories that may conflict with the installation of this product.
4. Before drilling ensure that the area is clear of fuel, electrical & other components.
5. All holes drilled into the body panels shall have all burrs & swarf removed then coated with a suitable rust preventative paint.
6. For vehicles that require the bumper to be cut. Ensure cut out area is in correct position on the vehicle prior to cutting the bumper.
7. The high tensile fasteners supplied with this product were used to achieve the specified rating. If replacement is required ensure that fasteners of the same rating & quality are used. Contact an authorized **Trailboss** dealer if further information is required.
8. Ensure that all hardware is fastened to torque list below check fasteners on regular basis.
9. Tow bar load rating sticker provided with this product shall be conspicuously located on inside rear end of the driver's door. **(See diagram below).**
10. Trailboss recommends that you check your tow ball to ensure that it complies with the Australian standards **AS 4177.2**.
11. **PLEASE NOTE:** It is advised to remove your lug or tbn when not actually towing so as to produce a clear view of the vehicles registration plate if obscured, and to also provide maximum available departure angle
12. Pull Pin must be fit in down position.



Place load rating sticker
inside driver's door here

FOR TRAILER TOWING PURPOSES ONLY
For towing capacity details please refer to vehicle owner's manual or to the manufacturer. Overloading can void your warranties.

RECOMMENDED ASSEMBLY TORQUE LISTING

<u>Diameter</u>	<u>Grade 8.8 Bolt</u>
M6	9.5 Nm
M8	21.7 Nm
M10	43.4 Nm
M12	77.3Nm
M14	146 Nm
M16	189.8 Nm

Tow bar Maintenance and Care.

Trailboss recommends that bolt torque's, as listed below, are routinely and regularly inspected and checked for correct tension. Replace any worn or defective parts.

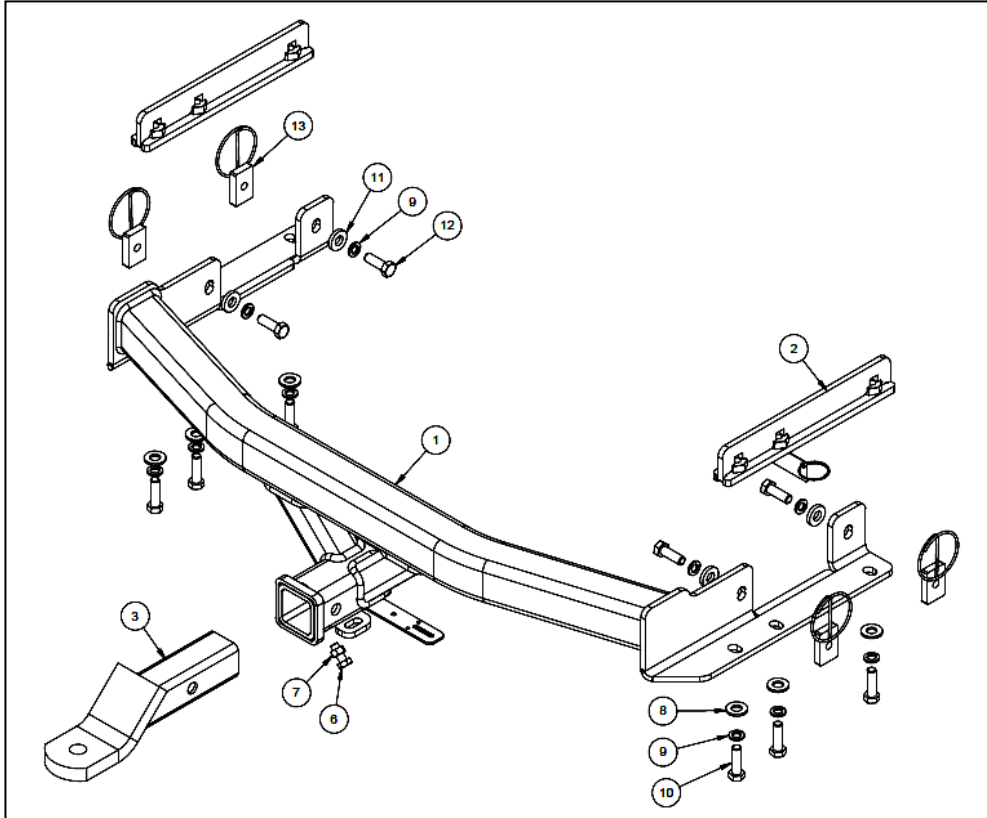
We recommended to remove Tow Ball Mounts (TBM's, tongues or lugs) when not being used for any considerable length of time.

So as to avoid injury, when not towing it is suggested that the tongue, Pull Pin and R-clip are removed then stored in a safe, clean and dry place, away from excessive moisture.

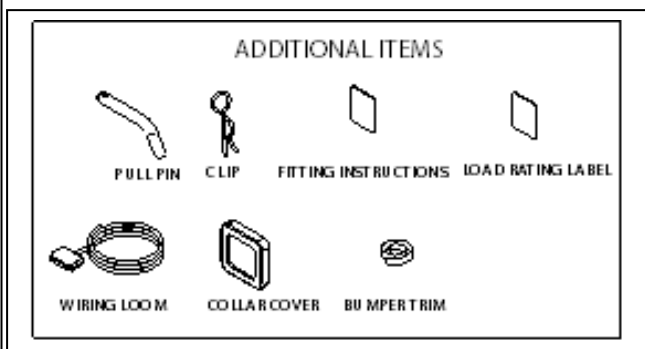
Hitch Pull Pins and spring "R" clips are regularly checked for proper installation. Replace any worn or defective parts.

TRAILBOSS

Towbar Fitting Instructions
 To Suit **SaanyYong Rexton 03 / 04 Onwards**
 Part Number **QTSY202L**
 Rating **2270-227 kg**



QTY.	DESCRIPTION	ITEM NO.
1	REXTON WELD ASSEMBLY	1
2	TAP PLATE	2
1	T.B.MOUNT	3
1	BOLT PACK	4
1	Bag CK 250x250 Clear	5
1	BOLT M10-1.50 x 25	6
1	HEX NUT M10x1.5	7
6	M14 X 28 X 3 Z/P FT WASHER	8
10	Wshr spring ft sec M12x4.0x2.5mm z/p	9
6	BOLT M12-1.75x40 GR8.8	10
4	WASHER FLAT M12x28.5x5	11
4	BOLT M12-1.25x35 GR 8.8	12
4	M12x1.25 TAP PLATE WITH 300 WIRE	13



Cequent Customer Service
 Ph: 1800 812 017 Fax: 03 9898 3299
 Email: info@cequent.com.au
 Post: PO Box 4050, Dandenong South VIC 3175



Towbar Fitting Instructions
To Suit **SaanyYong Rexton 03 / 04 Onwards**
Part Number **QTSY202L**
Rating **2270-227 kg**

1. Remove bumper bar by removal of plastic scrivenets under tailgate, removing mud flaps (if fitted) removing screws under wheels arches, taillight assemblies and disconnecting any wiring, before removing bumper bar.
2. Remove impact beam, via 4 screws on each sides of chassis rails.
3. Lower spare wheel.
4. Insert tap plate assembly inside chassis rail, passenger and driver side , raise towbar and secure to tap plate assembly using M12x3mm flat washers, M12 spring washers and M12x40 -1.75P set screws.
5. Secure M12x35-1.25P set screws, M12 spring washers, M12x5mm washers and M12-1.25P tap plate with wires to each side of towbar.
6. Torque all fasteners to specification on page 1.
7. Finding centre line of bumper, measure and mark out 190mm wide by 50mm deep from bottom edge of bumper bar.
8. Refit bumper bar in reverse order.
9. Attach accessories to towbar.



Wiring Loom Fitting Instructions
To Suit Ssangyong Rexton
Part Number 100082-WL

Wiring Loom Installation Instructions

Ssangyong Rexton
Part No: 100082-WL

Tail Harness Length Required: 400mm
RPA Override Switch Part No: 04848 (If Fitted)

Wiring Loom Installation Time: Approx 20 Mins



Wiring Loom Fitting Instructions
To Suit Ssangyong Rexton
Part Number 100082-WL

1. From the outside of the vehicle, remove the LHS tail light by first removing the screws,
2. Repeat step for the RHS.
3. Locate LHS tail light connector.
4. Patch in the Trailer Harness mating 6-way connectors.
5. Route the Trailer Harness (P/No: 100082-WL) from the LHS tail light connector, across the rear of the vehicle and towards the RHS tail light connector.
6. Locate RHS tail light connector.
7. Patch in the Trailer Harness mating 6-way connectors.
8. Mount the Trailer Socket to the towbar mounting bracket using M4 fasteners (not supplied).
9. Route the Tail Harness (tail length 1200mm) across the towbar towards the RHS of the vehicle and up towards the Trailer Harness.
10. Connect the Trailer Harness 8-way male connector to the Tail Harness mating 8-way male connector.
11. Waterproof the connectors using electrical grease or silicone.
12. Test the Trailer Harness function using a Light Board or multi-meter.
13. Secure all Harnesses using cables ties (not supplied).
14. Re-fit all removed parts and secure all fasteners, ensuring there are no squeaks or rattles.
15. Place the instructions in the glove box after fitment.