

# TRAILBOSS

Towbar Fitting Instructions  
To Suit **QTTA101L**  
Part Number **TATA XENON 2013 ON**  
Rating **2500/250 kg**

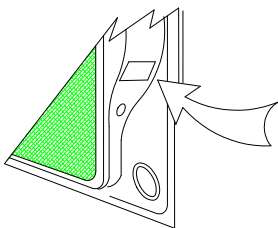
PLACE THESE INSTRUCTIONS IN THE VEHICLE'S GLOVEBOX AFTER INSTALLATION IS COMPLETED

## **WARNING:**

1. Do not, drill, cut, weld or otherwise modify the tow bar.
2. If you are using electric welding on a motor vehicle, **always** check that the vehicle is not equipped with electronic engine or instrument management equipment. Failure to do so could **destroy** any onboard computers. If in doubt, check with the vehicle's manufacturer.
3. The high tensile fasteners supplied with this product were used to achieve the specified rating. If replacement is required ensure that fasteners of the same rating & quality are used. Contact an authorised **Trailboss** dealer if further information is required.
4. If TBM is used in inverted position tow ball may make contact with rear tailgate when lowered, which could cause damage.

## **General:**

1. Ensure all hardware items have been included refer to assembly diagram.
2. It is recommended that the instructions are read through and completely understood before making any attempt to fit this product.
3. Be wary of any changes to vehicle designs or other accessories that may conflict with the installation of this product.
4. Before drilling ensure that the area is clear of fuel, electrical & other components.
5. All holes drilled into the body panels shall have all burrs & swarf removed then coated with a suitable rust preventative paint.
6. For vehicles that require the bumper to be cut. Ensure cut out area is in correct position on the vehicle prior to cutting the bumper.
7. The high tensile fasteners supplied with this product were used to achieve the specified rating. If replacement is required ensure that fasteners of the same rating & quality are used. Contact an authorized **Trailboss** dealer if further information is required.
8. Ensure that all hardware is fastened to torque list below check fasteners on regular basis.
9. Tow bar load rating sticker provided with this product shall be conspicuously located on inside rear end of the driver's door. **(See diagram below).**
10. Trailboss recommends that you check your tow ball to ensure that it complies with the Australian standards **AS 4177.2.**
11. **PLEASE NOTE:** It is advised to remove your lug or tbn when not actually towing so as to produce a clear view of the vehicles registration plate if obscured, and to also provide maximum available departure angle
12. Pull Pin must be fit in down position.



Place load rating sticker  
inside driver's door here

**FOR TRAILER TOWING PURPOSES ONLY**  
For towing capacity details please refer to vehicle owner's manual or to the manufacturer. Overloading can void your warranties.

### RECOMMENDED ASSEMBLY TORQUE LISTING

Diameter	Grade 8.8 Bolt
M6	9.5 Nm
M8	21.7 Nm
M10	43.4 Nm
M12	77.3Nm
M14	146 Nm
M16	189.8 Nm

## **Tow bar Maintenance and Care.**

Trailboss recommends that bolt torque's, as listed below, are routinely and regularly inspected and checked for correct tension. Replace any worn or defective parts.

We recommended to remove Tow Ball Mounts (TBM's, tongues or lugs) when not being used for any considerable length of time.

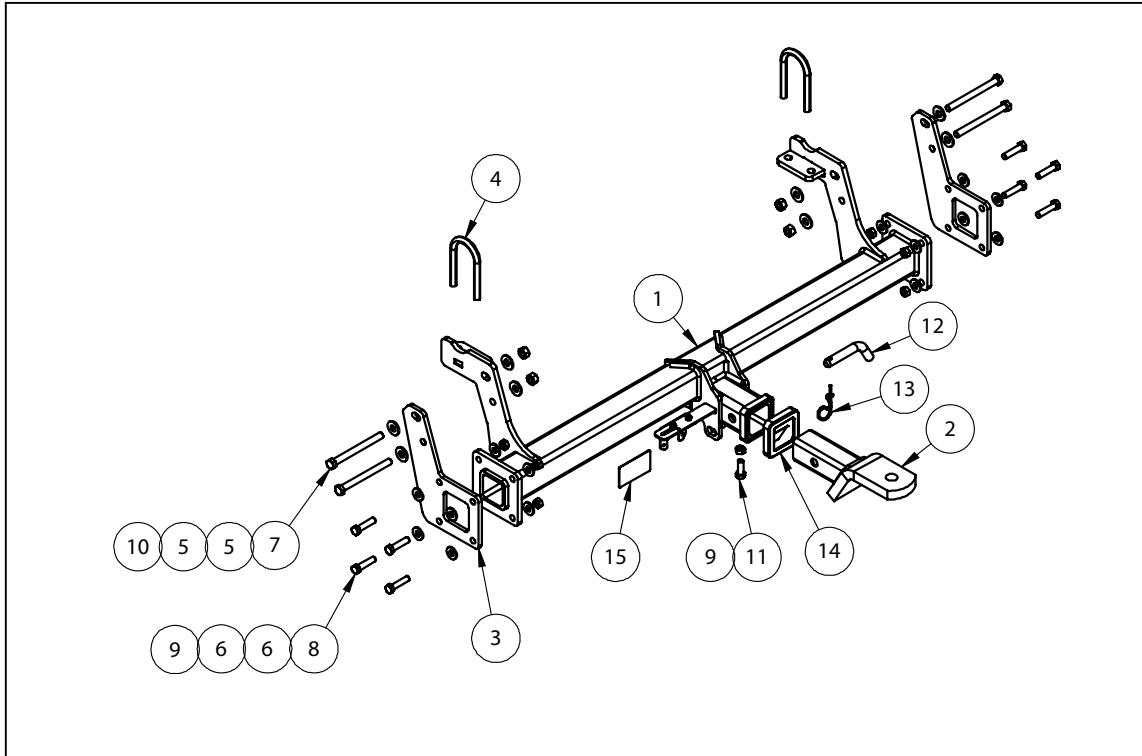
So as to avoid injury, when not towing it is suggested that the tongue, Pull Pin and R-clip are removed then stored in a safe, clean and dry place, away from excessive moisture.

Hitch Pull Pins and spring "R" clips are regularly checked for proper installation. Replace any worn or defective parts.

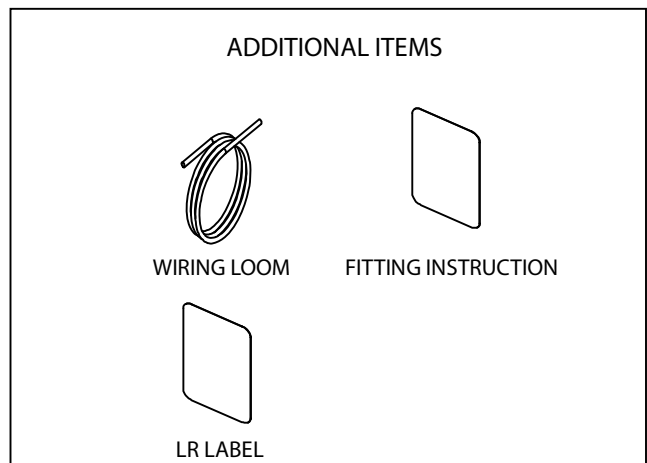
# TRAILBOSS

Towbar Fitting Instructions  
 To Suit **QTTA101L**  
 Part Number **TATA XENON 2013 ON**  
 Rating **2500/250 kg**

PLACE THESE INSTRUCTIONS IN THE VEHICLE'S GLOVEBOX AFTER INSTALLATION IS COMPLETED



QTY	DESCRIPTION	ITEM NO
1	WELDED ASSY	1
1	CLASS 4 TBM	2
2	TOWBAR END PLATE	3
2	U BOLT M121 RND 51MM X 110MM	4
8	M12 FLAT WASHER	5
16	M10 FLAT WASHER	6
4	M12x130-1.75P BOLT	7
8	BOLT HEX HD M10x45x1.5P	8
9	HEX NUT M10x1.5P	9
4	M12x1.75 HEX NUT PC8	10
1	SET SCREW HEX HD M10x30x1.5P	11
1	PULL PIN	12
1	R CLIP	13
1	HITCH BOX COLLAR COVER	14
1	ACRYLIC CP LABEL	15





Towbar Fitting Instructions  
To Suit **QTTA101L**  
Part Number **TATA XENON 2013 ON**  
Rating **2500/250 kg**

PLACE THESE INSTRUCTIONS IN THE VEHICLE'S GLOVEBOX AFTER INSTALLATION IS COMPLETED

**INSTRUCTION:**

1. Remove the 2 Bolts from the outside of the LHS & RHS of the step and place them on the inside of the step to support the step.
2. Install the both RHS & LHS End Plates to the outside of the Rails using 2xM12x130 Bolts and Washers. Push out the Bolts which were supporting the step and discard.
3. Offer the Towbar main assembly to the vehicle. The Towbar mounts to inner Chassis Rail and Outer End Plates. Support the Towbar by pushing through the M12x130 Bolts and securing with 2x M12 Nuts and Washers for both ends of the Towbar.
4. Using 8xM10 Bolts, 16x Washers and 8x Nuts on both sides of the Towbar, secure the End Plates to the main Towbar assembly.

**Torque the 8 M10 Bolts to 51Nm.**

**Torque the 4 M12 Bolts to 120Nm.**

5. Mount a U Bolt to both sides of the inside of the vehicle securing it to the inside plate of the Towbar.

**Torque the 2 U bolts to 40Nm.**



Wiring Loom Fitting Instructions  
To Suit Tata Xenon  
Part Number 101006-WL

## Wiring Loom Installation Instructions

Tata Xenon

Part No: 101006-WL  
ECU Required: WLT030

Tail Harness Length Required: 1200mm

Wiring Loom Installation Time: Approx 20 Mins



Wiring Loom Fitting Instructions  
To Suit Tata Xenon  
Part Number 101006-WL

1. Locate the vehicle battery.
2. Route the power harness from the engine battery towards the vehicle chassis.

**Note: Ensure to not connect the power harness to the vehicle battery at this point.**

3. Following the existing vehicle harness, route the power harness along the chassis rail towards the rear of the vehicle.
4. Secure any excess harness length.

**Note: Ensure when routing the power harness, to follow the existing vehicle harness and avoid any sharp or moving objects and any heated sources.**

5. At the rear of the vehicle, patch the Trailer Wiring Harness 8-way connector to the 8-way vehicle breakout connector. Ensure to remove the rubber boot cover.
6. Waterproof the exposed 8-way Trailer Wiring connector and 8-way vehicle breakout connector using silicone or grease & electrical tape.
7. Underneath the vehicle on the chassis rail, tek screw the trailer patch ground ring terminal to a suitable location.
8. Secure the waterproof ECU (1) (04835) to the vehicle in the location shown, using tek screws (2).
9. Connect the trailer patch 24-way connector (3) to the ECU (1).

**Note: Ensure the ECU connector is facing downwards.**





Wiring Loom Fitting Instructions  
To Suit Tata Xenon  
Part Number 101006-WL

10. At the rear of the vehicle, connect the 1-way male power harness connector to its mating vehicle connector.
11. Mount the trailer socket to the tow bar mounting bracket using M4 fasteners (not supplied).
12. Route the tail harness (tail length 1200mm) towards the trailer patch tail connector.
13. Connect the tail harness 8-way connector to the trailer patch 8-way mating connector.
14. Waterproof the trailer patch 8-way connector and the tail harness 8-way male connector using silicone or grease.

**If the vehicle indicators fail to work, follow this steps:**

15. **For the LHS:** Locate the Blue wire at the tail light assembly on the LHS. Solder a wire from the Yellow / Black wire on the Trailer Wiring Harness to the Blue wire at the tail light assemble.
16. **For the RHS:** Locate the Green wire at the tail light assembly on the RHS. Solder the wire to the Green / Black wire on the Trailer Wiring Harness.
17. Connect the power harness positive terminal to the battery.
18. Test the trailer wiring harness function using a light board or multi meter.
19. Secure all harnesses using cable ties (not supplied).
20. Re-fit all removed parts and secure all fasteners, ensuring there are no squeaks or rattles.
21. Place the fitting instructions in the glove box after fitment.