

TRAILBOSS

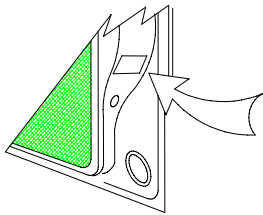
Towbar Fitting Instructions To Suit VW TIGUAN 05/2008-on Part Number QTVW201L Rating 2000/100 kg

WARNING:

1. Do not, drill, cut, weld or otherwise modify the tow bar.
2. If you are using electric welding on a motor vehicle, **always** check that the vehicle is not equipped with electronic engine or instrument management equipment. Failure to do so could **destroy** any onboard computers. If in doubt, check with the vehicle's manufacturer.

General:

1. Ensure all hardware items have been included refer to assembly diagram.
2. It is recommended that the instructions are read through and completely understood before making any attempt to fit this product.
3. Be wary of any changes to vehicle designs or other accessories that may conflict with the installation of this product.
4. Before drilling ensure that the area is clear of fuel, electrical & other components.
5. All holes drilled into the body panels shall have all burrs & swarf removed then coated with a suitable rust preventative paint.
6. The high tensile fasteners supplied with this product were used to achieve the specified rating. If replacement is required ensure that fasteners of the same rating & quality are used. Contact an authorized **Trailboss** dealer if further information is required.
7. Ensure that all hardware is fastened to torque list below check fasteners on regular basis.
8. Tow bar load rating sticker provided with this product shall be conspicuously located on inside rear end of the driver's door. **(See diagram below).**
9. Trailboss recommends that you check your tow ball to ensure that it complies with the Australian standards **AS 4177.2**.
10. **PLEASE NOTE:** It is advised to remove your lug or tbn when not actually towing so as to produce a clear view of the vehicles registration plate if obscured, and to also provide maximum available departure angle



Place load rating sticker
inside driver's door here

FOR TOWING PURPOSES ONLY

For towing capacity details please refer to vehicle owner's manual or to the manufacturer. Overloading can void your warranties.

RECOMMENDED ASSEMBLY TORQUE LISTING

<u>Diameter</u>	<u>Grade 8.8 Bolt</u>
M6	9.5 Nm
M8	21.7 Nm
M10	43.4 Nm
M12	77.3Nm
M14	146 Nm
M16	189.8 Nm

Tow bar Maintenance and Care.

Trailboss recommends that bolt torque's, as listed below, are routinely and regularly inspected and checked for correct tension. Replace any worn or defective parts.

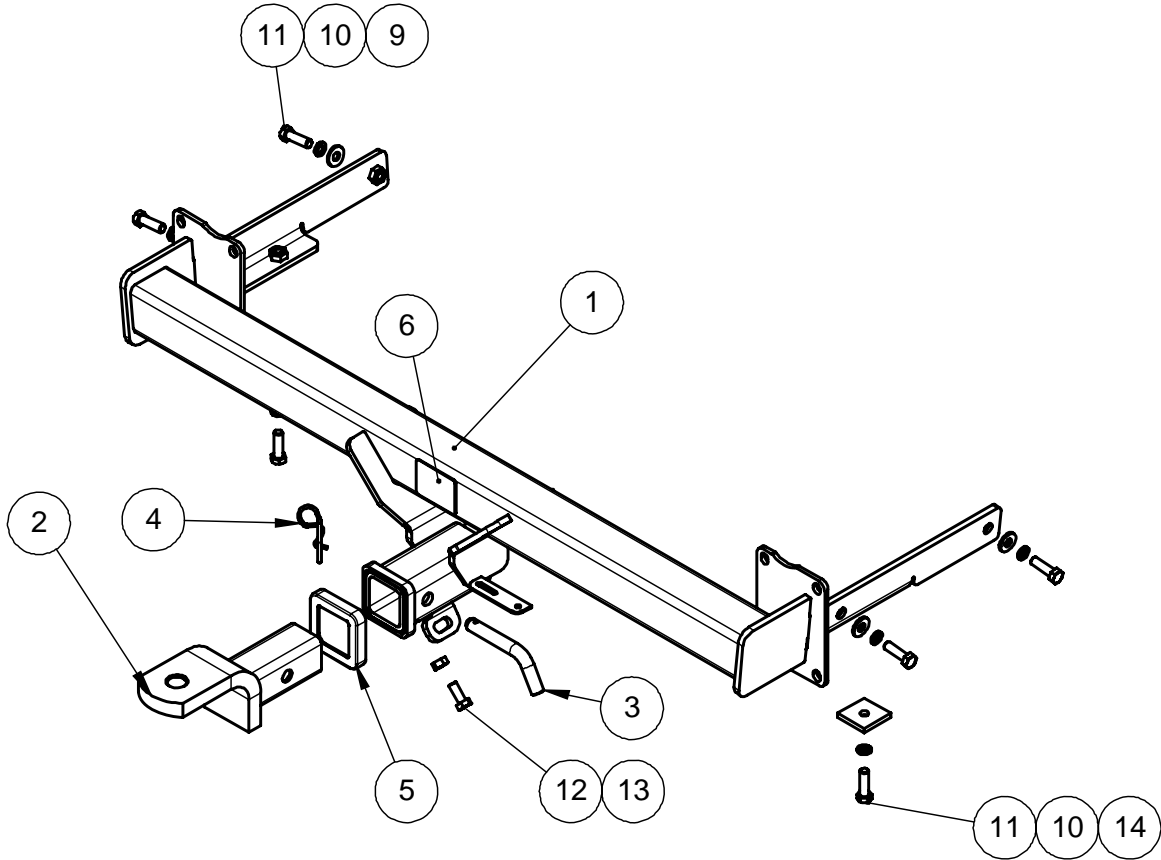
We recommended to remove Tow Ball Mounts (TBM's, tongues or lugs) when not being used for any considerable length of time.

So as to avoid injury, when not towing it is suggested that the tongue, Pull Pin and R-clip are removed then stored in a safe, clean and dry place, away from excessive moisture.

Hitch Pull Pins and spring "R" clips are regularly checked for proper installation. Replace any worn or defective parts.

TRAILBOSS





Towbar Fitting Instructions
 To Suit VW TIGUAN 05/2008-on
 Part Number QTVW201L
 Rating 2000/100 kg



QTY.	DESCRIPTION	ITEM NO.
1	VW TIGUAN WELD ASSY	1
1	T.B.MOUNT	2
1	PULL PIN	3
1	SPRING COTTER PIN	4
1	HITCH BOX COLLAR COVER	5
1	CP LABEL	6
1	FITTING INSTRUCTION	7
1	LRL LABEL	8
4	WSHR FT M10 X 25.4 X 3	9
6	Wshr spring M10 x 3.5 x 2.2 blk/zn	10
6	M10 x 35 1.5P BOLT	11
1	BOLT M10-1.50 x 25	12
1	NUT M10 x 1.5 Z/P HX NUTS	13
2	LOOSE PLT 45 x 6 x 45 Ø11	14

TRAILBOSS

Towbar Fitting Instructions
To Suit VW TIGUAN 05/2008-on
Part Number QTVW201L
Rating 2000/100 kg

	<ol style="list-style-type: none">1. Remove tail light assembly via 2 torx screws on both sides.2. Remove 2 torx screws below tail light assembly on both sides.
	<ol style="list-style-type: none">3. Remove 2 torx screws be hide number plate display.
	<ol style="list-style-type: none">4. Remove 3 torx screws, 2 inside rear wheel well and 1 under seat on both sides.5. Remove 2 torx screws under bumper skin.
	<ol style="list-style-type: none">6. Suppurate rear wheel well trim to remove plastic scrivet on both side.

TRAILBOSS

Towbar Fitting Instructions
To Suit VW TIGUAN 05/2008-on
Part Number QTVW201L
Rating 2000/100 kg



7. Disconnect any wiring attached to rear bumper skin.
 8. Suppurate bumper skin from vehicle.
 9. Remove rear impact beam via 6 screws and discard.
- Note: Retain the screws to be refit with towbar.

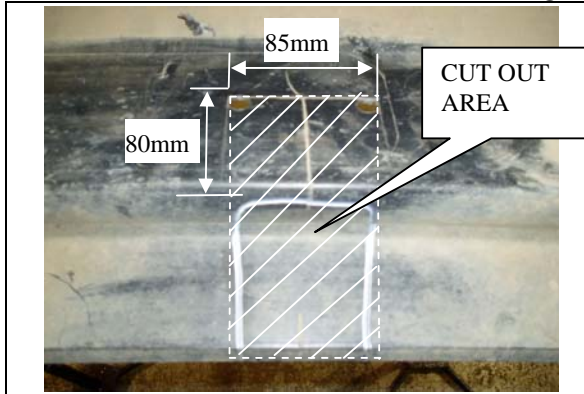


10. Offer towbar to chassis rails and loosely secure with 6 screws from rear impact beam.



11. Use supplied M10 screws, washer and spring washer, secure towbar to the side of chassis rails.
12. Use supplied M10 screws, spring washer and fitting to underside of chassis rails.

Towbar Fitting Instructions
To Suit VW TIGUAN 05/2008-on
Part Number QTVW201L
Rating 2000/100 kg



13. Indicate the factory cut out inside bumper and mark a centre line. From the end of factory marking, extend the centre line by 80mm rearward. Mark 85mm wide to the front edge of the bumper (refer photo for cut out area).
14. Mark cut out area on internal face of the bumper. Hold bumper against vehicle to confirm cut out area is in correct position prior to cutting.
15. Refit bumper skin in reverse order from step 1-8.



Wiring Loom Fitting Instructions
To Suit Volkswagen Tiguan
Part Number 100141-WL

Wiring Loom Installation Instructions

Volkswagen Tiguan
Part No: 100141-WL

Tail Harness Length Required: 1200mm
ECU Required: 04827
RPA Override Switch Part No: 04848 (If Fitted)

Wiring Loom Installation Time: Approx 60 Mins



Wiring Loom Fitting Instructions
To Suit Volkswagen Tiguan
Part Number 100141-WL

Vehicle Wiring	Tail Harness/Wiring Loom
Black/White	Yellow/Black
Black/Green	Green/Black
Black/Purple	Brown/Black
Blue/Black	Black/White

1. Remove the LHS and RHS tail light assembly and all the required trims to gain access to the LHS and RHS tail light connectors.
2. Remove all the RHS door sill trims and 'B' pillar lower trim to route the trailer harness to the fuse box located by the driver's side foot well.
3. In the rear luggage compartment RHS rear quarter area, drill a Ø30mm hole into the floor of the vehicle (near the current vehicle harness entry location).
4. Smooth the edges of the previously drilled hole using a hole-file and then spray the area with a zinc based rust inhibitor.
5. At the rear of the vehicle, secure a supplied Scotch Lock over the BLACK/WHITE Indicator wire on the vehicle harness LHS tail light assembly connector. Connect the YELLOW/BLACK wire male terminal from the Trailer Patch Harness (P/No: 100141-WL) to the Scotch Lock.
6. Secure a supplied Scotch Lock over the BLACK/GREEN indicator wire. Secure the GREEN/BLACK wire male terminal from the Trailer Patch Harness to the RHS indicator Scotch Lock.
7. Secure a supplied Scotch Lock over the BLACK/PURPLE brake light wire on the RHS tail light assembly connector and connect the BROWN/BLACK wire male terminal from the Trailer Patch Harness to the RHS brake light Scotch Lock.
8. Secure the Trailer Patch Harness earth ring to the vehicle earthing point.
9. Connect the Trailer Patch Harness ECU connector to the ECU.
10. Secure the Trailer socket onto the towbar mounting bracket with M4 fasteners (not supplied).
11. Route the Tail Harness (tail length:1200mm) along the towbar and into the vehicle through the previously drilled hole. Secure the Tail Harness to the towbar using Cable Ties (not supplied).
12. Adjust the Tail Harness grommet into position to form a proper seal. Secure with cable ties (not supplied).
13. Inside the luggage compartment RHS trim cavity area, secure a supplied Scotch Lock over the BLUE/BLACK reverse light wire and connect the Black/White wire male terminal from the Trailer Patch Harness to the reverse light wire Scotch Lock.



Wiring Loom Fitting Instructions
To Suit Volkswagen Tiguan
Part Number 100141-WL

14. In the rear luggage compartment RHS trim cavity area, secure the ECU to the sheet metal area located above the vehicle grounding point ensuring the ECU connector side is pointing downwards.
15. On the outside, secure the harness to the towbar using cable ties (not supplied).
16. Route the Trailer Patch Harness fuse connector to the front of the vehicle, following the existing vehicle harness, towards the fuse box in the front driver's side foot well
17. In the front driver's side foot well, remove the fuse box access door.
18. Remove the fuse from either position 44, 45 or 46 in the fuse box. **(Refer to the vehicle owner's manual)**
19. Plug the supplied add-a-fuse into the previously removed fuse's slot and mount the removed fuse in the back of the add-a-fuse.
20. Connect the Trailer Patch Harness fuse connector to the add-a-fuse connector
21. Refit all previously removed trims and parts
22. Test the Trailer Wiring Harness functionality using a lightboard or multimeter.
23. Secure the all harnesses using cables ties (not supplied).
24. Place instructions in glove box after fitment.