

TRAILBOSS

Towbar Fitting Instructions
To Suit **VOLKSWAGEN TRANSPORTER T5 SERIES**
Part Number **QTVW214L**
Rating **2500/100 kg**

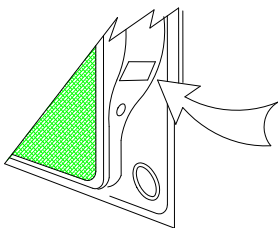
PLACE THESE INSTRUCTIONS IN THE VEHICLE'S GLOVEBOX AFTER INSTALLATION IS COMPLETED

WARNING:

1. Do not, drill, cut, weld or otherwise modify the tow bar.
2. If you are using electric welding on a motor vehicle, **always** check that the vehicle is not equipped with electronic engine or instrument management equipment. Failure to do so could **destroy** any onboard computers. If in doubt, check with the vehicle's manufacturer.
3. The high tensile fasteners supplied with this product were used to achieve the specified rating. If replacement is required ensure that fasteners of the same rating & quality are used. Contact an authorised **Trailboss** dealer if further information is required.
4. If TBM is used in inverted position tow ball may make contact with rear tailgate when lowered, which could cause damage.

General:

1. Ensure all hardware items have been included refer to assembly diagram.
2. It is recommended that the instructions are read through and completely understood before making any attempt to fit this product.
3. Be wary of any changes to vehicle designs or other accessories that may conflict with the installation of this product.
4. Before drilling ensure that the area is clear of fuel, electrical & other components.
5. All holes drilled into the body panels shall have all burrs & swarf removed then coated with a suitable rust preventative paint.
6. For vehicles that require the bumper to be cut. Ensure cut out area is in correct position on the vehicle prior to cutting the bumper.
7. The high tensile fasteners supplied with this product were used to achieve the specified rating. If replacement is required ensure that fasteners of the same rating & quality are used. Contact an authorized **Trailboss** dealer if further information is required.
8. Ensure that all hardware is fastened to torque list below check fasteners on regular basis.
9. Tow bar load rating sticker provided with this product shall be conspicuously located on inside rear end of the driver's door. **(See diagram below).**
10. Trailboss recommends that you check your tow ball to ensure that it complies with the Australian standards **AS 4177.2**.
11. **PLEASE NOTE:** It is advised to remove your lug or tbn when not actually towing so as to produce a clear view of the vehicles registration plate if obscured, and to also provide maximum available departure angle



Place load rating sticker
inside driver's door here

FOR TRAILER TOWING PURPOSES ONLY
For towing capacity details please refer to vehicle owner's manual or to the manufacturer. Overloading can void your warranties.

RECOMMENDED ASSEMBLY TORQUE LISTING

| Diameter | Grade 8.8 Bolt |
|----------|----------------|
| M6 | 9.5 Nm |
| M8 | 21.7 Nm |
| M10 | 43.4 Nm |
| M12 | 77.3Nm |
| M14 | 146 Nm |
| M16 | 189.8 Nm |

Tow bar Maintenance and Care.

Trailboss recommends that bolt torque's, as listed below, are routinely and regularly inspected and checked for correct tension. Replace any worn or defective parts.

We recommended to remove Tow Ball Mounts (TBM's, tongues or lugs) when not being used for any considerable length of time.

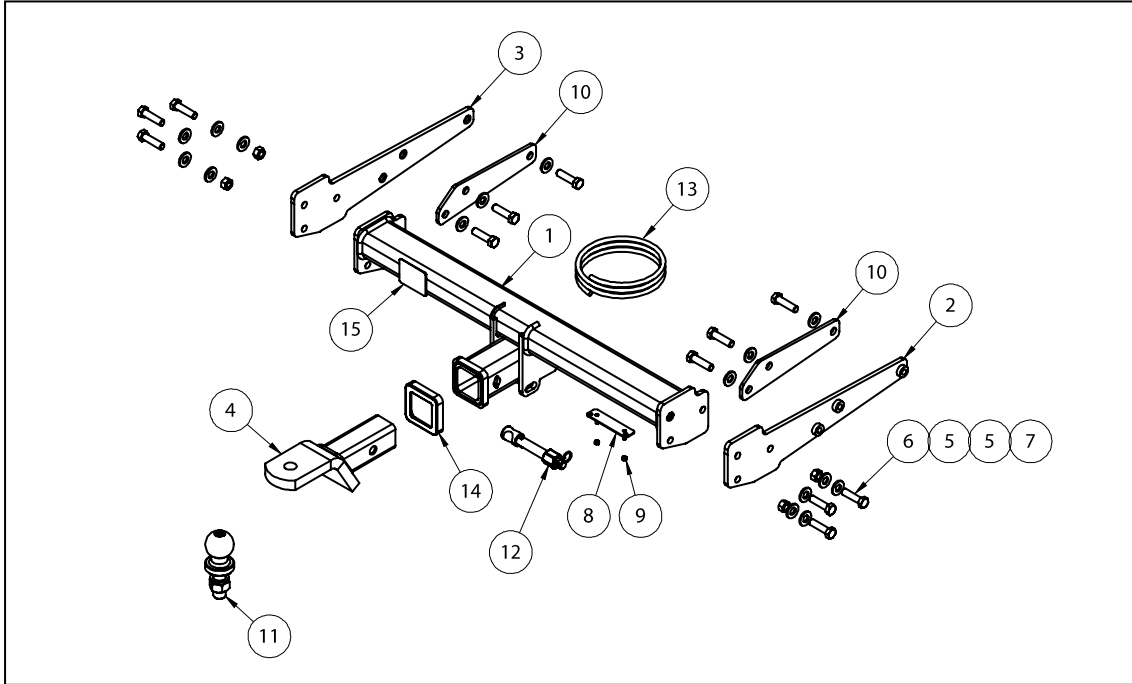
So as to avoid injury, when not towing it is suggested that the tongue, Pull Pin and R-clip are removed then stored in a safe, clean and dry place, away from excessive moisture.

Hitch Pull Pins and spring "R" clips are regularly checked for proper installation. Replace any worn or defective parts.

TRAILBOSS

Towbar Fitting Instructions
 To Suit **VOLKSWAGEN TRANSPORTER T5 SERIES**
 Part Number **QTVW214L**
 Rating **2500/100 kg**

PLACE THESE INSTRUCTIONS IN THE VEHICLE'S GLOVEBOX AFTER INSTALLATION IS COMPLETED



| QTY. | DESCRIPTION | ITEM NO. |
|------|------------------------------|----------|
| 1 | WELDED ASSEMBLY | 1 |
| 1 | SIDE ARM RHS | 2 |
| 1 | SIDE ARM LHS | 3 |
| 1 | CLASS 4 TBM ASSY | 4 |
| 16 | WASHER FLAT 1/2"x1 1/8"x1/8" | 5 |
| 12 | SET SCREW M12x45x1.25P G10.9 | 6 |
| 4 | HEX NUT M12x1.25 PC8 | 7 |
| 1 | PLUG BRACKET | 8 |
| 2 | NUT NYLOC M4-0.7 Z/P | 9 |
| 2 | WASHER PLATE | 10 |
| 1 | 50mm TOWBALL | 11 |
| 1 | SILENT HITCH PIN-SILVER | 12 |
| 1 | WIRING LOOM | 13 |
| 1 | HITCH BOX COLLAR COVER | 14 |
| 1 | ACRYLIC COMPLIANCE PLATE | 15 |



Towbar Fitting Instructions
To Suit **VOLKSWAGEN TRANSPORTER T5 SERIES**
Part Number **QTVW214L**
Rating **2500/100 kg**

PLACE THESE INSTRUCTIONS IN THE VEHICLE'S GLOVEBOX AFTER INSTALLATION IS COMPLETED

INSTRUCTION:

1. Release the tail gate to expose the rear cabin.
2. Remove 2 x Torx Screws securing the tail light to the vehicle. Repeat for opposite side.
NOTE: Once Screws are removed, push tail lights outwards.
3. Remove 2 x Push Rivets located on the top of the bumper where the tail light was previously. Repeat for opposite side.
4. On the inside of the wheel arch remove 2 x Torx Screws. Repeat for opposite side.
5. On the underside of the bumper and closest to the corner remove 1 x Screw and 1 Push Rivet. Repeat for opposite side.
6. Detach Factory Shipping Hook by removing 2 x Set Screws. Keep in a safe place for re-attachment.
7. Remove spare tyre by lowering cradle.
8. Detach spare wheel well under tray by removing 5 x Set Screws and 2 x Heat shield clips. Keep under tray in a safe place for re-attachment.
9. Carefully remove bumper by peeling away each corner. Keep in a safe place for re-attachment.
10. Detach factory impact beam by removing 4 x Set Screws and 1 x Plastic nut. Keep in a safe place for re-assembly.
11. On the factory impact beam, cut across 825mm from each chassis rail opening and 115mm up from the bottom edge. This will provide relief for the towbar and support for the bumper. Make sure to cut around mounting holes on the impact beam. Notch the top side of the impact beam to provide clearance for the towbar side arms.
12. Install side arms into chassis rails and loosely secure using 3 x M12 x 1.25P G10.9 Set Screws with accompanying flat washers. Repeat for opposite side. Make sure the flat side of the side arm is contacting the inner wall of the chassis.
13. Re attach fasteners with washer plate supplied on the inside face of the vehicle.
Repeat for opposite side of the vehicle. (Figure 1)
14. Lower centre section of Towbar between side arms and loosely secure using 6 x M12 x 1.25P G10.9 with accompanying Flat Washers and Nuts.
Torque all fasteners to specifications listed below:
M12 x 1.25P x G10.9 : 125Nm
15. On the underside of the bumper, starting from the bottom edge, locate the centre. Cut 90mm up on the surface and 80mm across (40mm either side of the centre). (Figure 2)
16. Mark out and drill 2x \varnothing 5mm holes 69mm apart on bumper skin to support plug bracket. Feed bracket threads through drilled holes prior to reinstalling bumper.
17. Re-attach bumper by following Steps 1-10 in reverse.



Towbar Fitting Instructions
To Suit **VOLKSWAGEN TRANSPORTER T5 SERIES**
Part Number **QTVW214L**
Rating **2500/100 kg**

PLACE THESE INSTRUCTIONS IN THE VEHICLE'S GLOVEBOX AFTER INSTALLATION IS COMPLETED



Figure 1

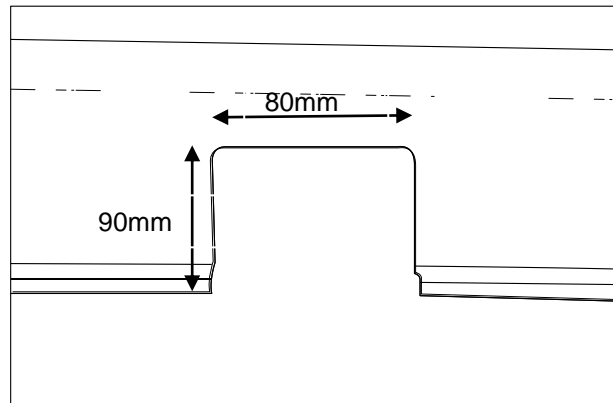


Figure 2



Wiring Loom Fitting Instructions
To Suit VW Transporter
Part Number 100148-WL

Wiring Loom Installation Instructions

VW Transporter

Part No: 100148-WL

Tail Harnesses Length Required: 1200mm

RPA Override Switch Part No: 04848 (If Fitted)

Wiring Loom Installation Time: Approx. 45 Mins

- **If vehicle utilizes LED trailer lights and/or exceeds 5Amps, ensure to use harness 04916.**



Wiring Loom Fitting Instructions
To Suit VW Transporter
Part Number 100148-WL

1. From outside the vehicle, remove the LHS tail light by first removing the two fasteners.
2. Repeat step for the RHS.
3. Remove the LHS lower rear trim by first removing any fasteners.
4. Repeat step for the RHS.
5. Remove the rear bumper by first removing any clips or fasteners.
6. Locate the LHS tail light harness.
7. Cut open the tail light harness to expose the wires.
8. Following the table below, connect the ezy taps to the vehicle harness wires.

| Function | Trailer Patch | Vehicle Connector |
|----------|---------------|-------------------|
| L.IND | YELLOW | BLACK / WHITE |
| REVERSE | BLACK | GREEN / BLACK |
| TAIL | BROWN | GREY / BLACK |
| BRAKES | RED | BLACK / RED |

9. Connect the trailer harness terminals to the corresponding wires by referring to the above table.

Note: Use electrical tape to insulate the ezy taps and the vehicle tail light wires. Ensure it makes a good seal so they are protected from water.

10. Route the trailer harness from the LHS, across the rear of the vehicle and towards the RHS.
11. Locate the RHS tail light harness.
12. Cut open the tail light harness to expose the wires.
13. Following the table below, connect the ezy tap to the vehicle harness wire, then connect the trailer harness terminal to the corresponding wires.

| Function | Trailer Patch | Vehicle Connector |
|----------|---------------|-------------------|
| R.IND | GREEN | BLACK / GREEN |

Note: Use electrical tape to insulate the ezy taps and the vehicle tail light wires. Ensure it makes a good seal so they are protected from water.

14. Mount the trailer socket to the towbar mounting bracket using M4 fasteners (not supplied).
15. Route the tail harness (tail length 1200mm) across the rear of the vehicle and towards the LHS.
16. Connect the tail harness 8-way connector to the trailer harness mating 8-way connector.



Wiring Loom Fitting Instructions
To Suit VW Transporter
Part Number 100148-WL

17. Waterproof the two 8-way connectors using silicone or electrical grease.
18. Using a tech screw (not supplied), secure the trailer harness ground ring terminal to the vehicle body.
19. Test the trailer harness function using a light board or multi-meter.
20. Secure all harnesses using cables ties (not supplied).
21. Re-fit all removed parts and secure all fasteners, ensuring there are no squeaks or rattles.
22. Place the instructions in the glove box after fitment



FITTING INSTRUCTIONS

Silent Anti-Rattle Hitch Pin (PR0001)

• These fitting instructions are supplied to ensure understanding of how the HITCH PIN should be fitted and used correctly.

• Once installed, we recommend **ALL** instructions are kept and placed in the vehicle glove box.

NOTE: Routine maintenance and inspection of the towbar & HITCH PIN is required. Regularly inspect for wear and check the tightness of the Hitch Pin. Follow instructions below to retighten the nut when necessary.

***Do not tow with your vehicle if the R CLIP or the HITCH PIN is loose or missing. Replacement parts are available from your Pro Series Distributor.**

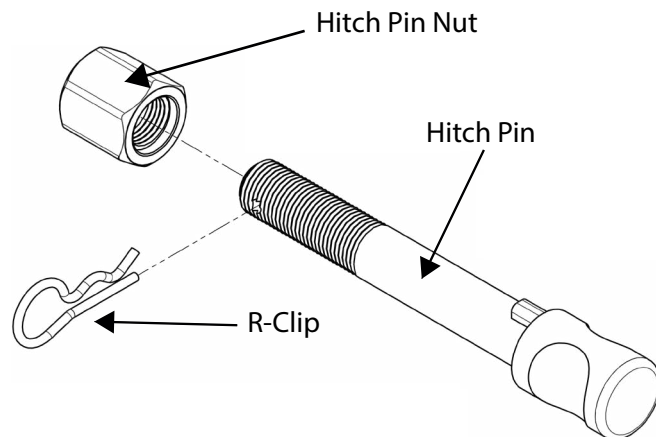


Fig 1. Silent Anti-Rattle Hitch Pin assembly

STEP 1

Insert Trailer Ball Mount (TBM) into towbar HITCHBOX, aligning hole in TBM SHANK with hole in HITCHBOX (Fig 2).

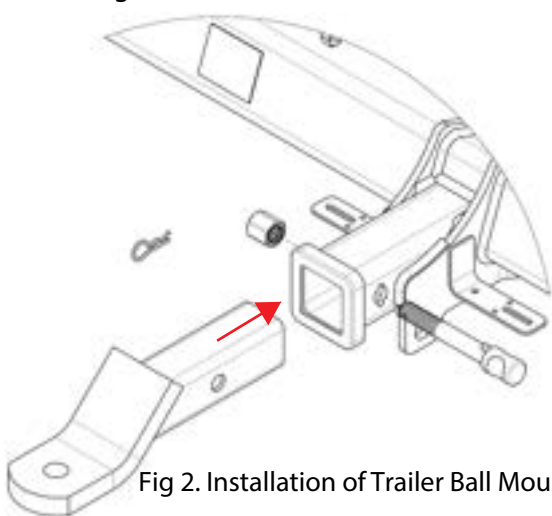


Fig 2. Installation of Trailer Ball Mount

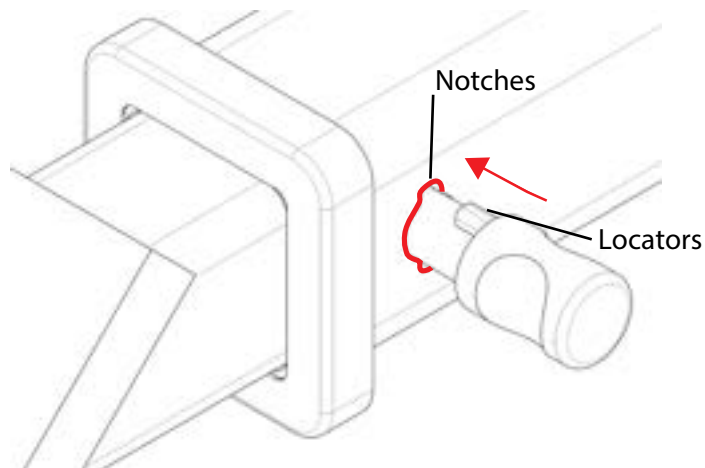


Fig 3. Silent Anti-Rattle Hitch Pin orientation

STEP 2

Insert HITCH PIN through hole in HITCHBOX and hole in TBM SHANK; ensure the LOCATORS are inserted into the NOTCHES in the HITCHBOX (Fig. 3).

STEP 3

Screw HITCH PIN NUT onto HITCH PIN ; tighten HITCH PIN NUT until finger tight, ensuring TBM is restrained from movement.

STEP 4

Tighten HITCH PIN NUT by turning nut a further 1/8th of a turn in the clockwise direction using a 24mm spanner (Fig. 4).

STEP 5

Install HITCH PIN R CLIP through the hole on the HITCH PIN (Fig. 1).

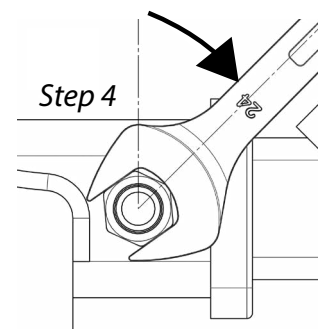


Fig 4. Tightening of Silent Anti-Rattle Hitch Pin Nut