

# TRAILBOSS

## Towbar Fitting Instructions To Suit **VOLKSWAGEN TIGUAN 5NA CL 4** Part Number **QTVW219L** Rating **2500/100 kg**

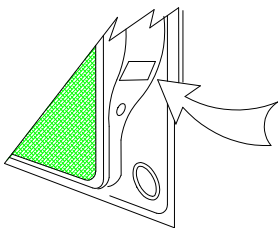
PLACE THESE INSTRUCTIONS IN THE VEHICLE'S GLOVEBOX AFTER INSTALLATION IS COMPLETED

### **WARNING:**

1. Do not, drill, cut, weld or otherwise modify the tow bar.
2. If you are using electric welding on a motor vehicle, **always** check that the vehicle is not equipped with electronic engine or instrument management equipment. Failure to do so could **destroy** any onboard computers. If in doubt, check with the vehicle's manufacturer.
3. The high tensile fasteners supplied with this product were used to achieve the specified rating. If replacement is required ensure that fasteners of the same rating & quality are used. Contact an authorised **Trailboss** dealer if further information is required.
4. If TBM is used in inverted position tow ball may make contact with rear tailgate when lowered, which could cause damage.

### **General:**

1. Ensure all hardware items have been included refer to assembly diagram.
2. It is recommended that the instructions are read through and completely understood before making any attempt to fit this product.
3. Be wary of any changes to vehicle designs or other accessories that may conflict with the installation of this product.
4. Before drilling ensure that the area is clear of fuel, electrical & other components.
5. All holes drilled into the body panels shall have all burrs & swarf removed then coated with a suitable rust preventative paint.
6. For vehicles that require the bumper to be cut. Ensure cut out area is in correct position on the vehicle prior to cutting the bumper.
7. The high tensile fasteners supplied with this product were used to achieve the specified rating. If replacement is required ensure that fasteners of the same rating & quality are used. Contact an authorized **Trailboss** dealer if further information is required.
8. Ensure that all hardware is fastened to torque list below check fasteners on regular basis.
9. Tow bar load rating sticker provided with this product shall be conspicuously located on inside rear end of the driver's door. **(See diagram below).**
10. Trailboss recommends that you check your tow ball to ensure that it complies with the Australian standards **AS 4177.2**.
11. **PLEASE NOTE:** It is advised to remove your LUG or TBM when not actually towing so as to produce a clear view of the vehicles registration plate if obscured, and to also provide maximum available departure angle



Place load rating sticker  
inside driver's door here

**FOR TRAILER TOWING PURPOSES ONLY**  
For towing capacity details please refer to vehicle owner's manual or to the manufacturer. Overloading can void your warranties.

### **RECOMMENDED ASSEMBLY TORQUE LISTING**

<u>Diameter</u>	<u>Grade 8.8 Bolt</u>
M6	9.5 Nm
M8	21.7 Nm
M10	43.4 Nm
M12	77.3Nm
M14	146 Nm
M16	189.8 Nm

### **Tow bar Maintenance and Care.**

Trailboss recommends that bolt torque's, as listed below, are routinely and regularly inspected and checked for correct tension. Replace any worn or defective parts.

We recommended to remove Tow Ball Mounts (TBM's, tongues or lugs) when not being used for any considerable length of time.

So as to avoid injury, when not towing it is suggested that the tongue, Pull Pin and R-clip are removed then stored in a safe, clean and dry place, away from excessive moisture.

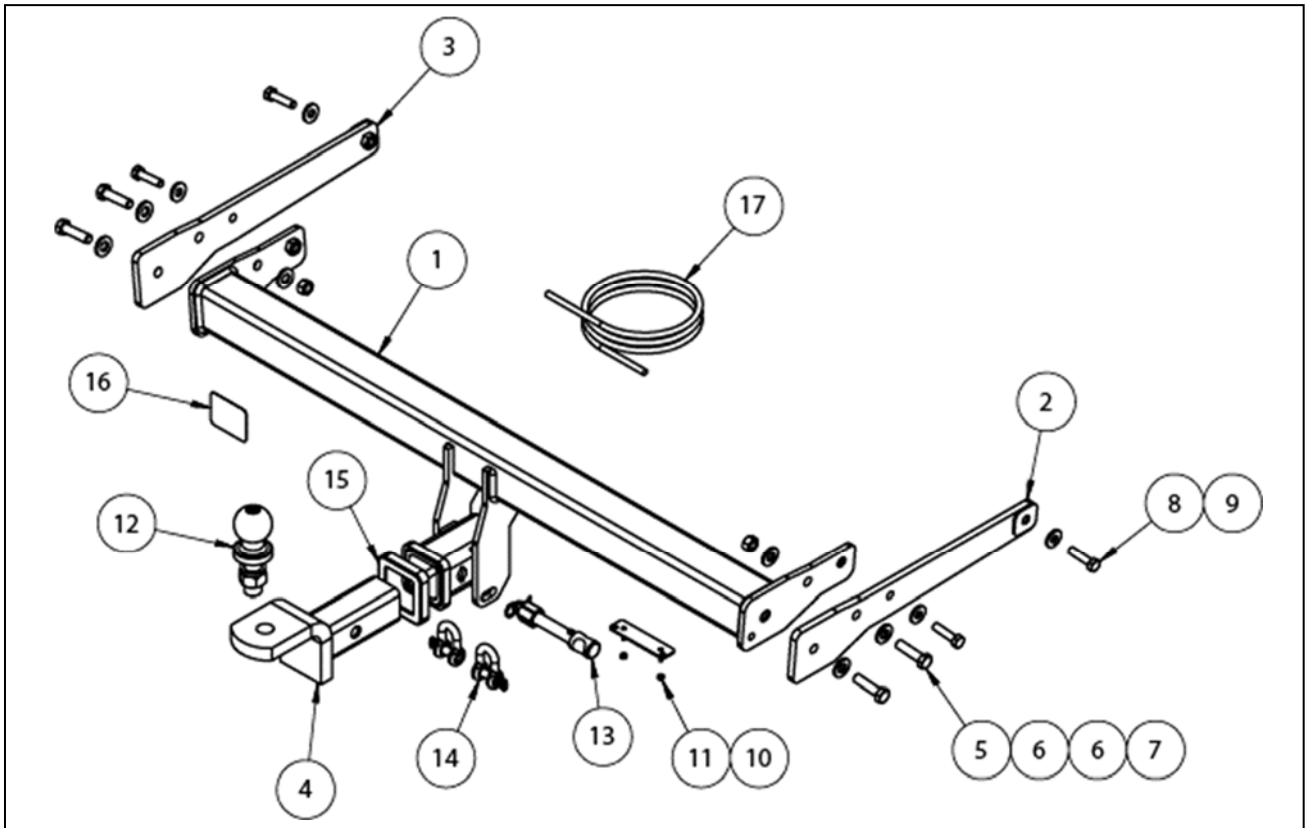
Hitch Pull Pins and spring "R" clips are regularly checked for proper installation. Replace any worn or defective parts.

**Cequent Customer Service**  
Ph: 1800 812 017 Fax: 03 9898 3299  
Email: [info@cequent.com.au](mailto:info@cequent.com.au)  
Post: PO Box 4050, Dandenong South VIC 3175

# TRAILBOSS

Towbar Fitting Instructions  
 To Suit **VOLKSWAGEN TIGUAN 5NA CL 4**  
 Part Number **QTVW219L**  
 Rating **2500/100 kg**

PLACE THESE INSTRUCTIONS IN THE VEHICLE'S GLOVEBOX AFTER INSTALLATION IS COMPLETED



ITEM	DESCRIPTION	QTY
1	VW PASSAT B8 WELDED ASSY	1
2	SIDEARM ASSEMBLY – RHS	1
3	SIDEARM ASSEMBLY – LHS	1
4	TRAILER BALL MOUNT	1
5	SET SCREW M12x45x1.25P	4
6	WASHER FLAT 1/2"x1 1/8"x1/8"	6
7	HEX NUT PC8 M12x1.25	2
8	BOLT M10x1.25x40	4
9	WASHER FT M10x25.4x3	4

ITEM	DESCRIPTION	QTY
10	PLUG BRACKET	1
11	NUT NYLOC M4-0.7 Z/P	2
12	TOWBALL 50MM	1
13	SILENT HITCH PIN – SILVER	1
14	"D" SHACKLE 10MM	2
15	HITCH BOX COLLAR COVER	1
16	ACRYLIC CP LABEL	1
17	WIRING LOOM	1

**Cequent Customer Service**  
 Ph: 1800 812 017 Fax: 03 9898 3299  
 Email: [info@cequent.com.au](mailto:info@cequent.com.au)  
 Post: PO Box 4050, Dandenong South VIC 3175

# TRAILBOSS

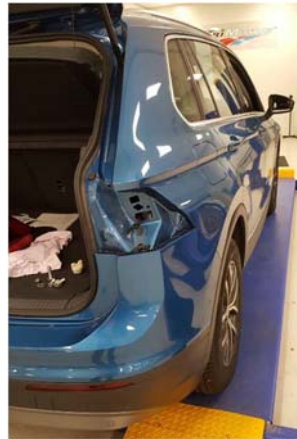
Towbar Fitting Instructions  
To Suit **VOLKSWAGEN TIGUAN 5NA CL 4**  
Part Number **QTVW219L**  
Rating **2500/100 kg**

PLACE THESE INSTRUCTIONS IN THE VEHICLE'S GLOVEBOX AFTER INSTALLATION IS COMPLETED

1. Remove trim cover inside boot and remove plastic screw securing tail light assembly.  
  
Repeat for opposite side of vehicle.



2. Remove and disconnect rear tail light assembly.  
  
Repeat for opposite side of vehicle.



3. Remove 3 x screws from within rear wheel arch.  
  
Repeat for opposite side of vehicle.



**Cequent Customer Service**  
Ph: 1800 812 017 Fax: 03 9898 3299  
Email: [info@cequent.com.au](mailto:info@cequent.com.au)  
Post: PO Box 4050, Dandenong South VIC 3175

Towbar Fitting Instructions  
To Suit **VOLKSWAGEN TIGUAN 5NA CL 4**  
Part Number **QTVW219L**  
Rating **2500/100 kg**

PLACE THESE INSTRUCTIONS IN THE VEHICLE'S GLOVEBOX AFTER INSTALLATION IS COMPLETED

4. Remove 1 x screw from underside of bumper rear of wheel arch.

Repeat for opposite side of vehicle.



5. Partially unclip rear wheel arch trim; remove 1 x screw from rear bumper, next to rear wheel arch.



6. Remove 4 x scrivets from underside of bumper.



**Cequent Customer Service**  
Ph: 1800 812 017 Fax: 03 9898 3299  
Email: [info@cequent.com.au](mailto:info@cequent.com.au)  
Post: PO Box 4050, Dandenong South VIC 3175

# TRAILBOSS

Towbar Fitting Instructions  
To Suit **VOLKSWAGEN TIGUAN 5NA CL 4**  
Part Number **QTVW219L**  
Rating **2500/100 kg**

PLACE THESE INSTRUCTIONS IN THE VEHICLE'S GLOVEBOX AFTER INSTALLATION IS COMPLETED

7. Carefully unclip and remove rear bumper. Disconnect rear parking assist loom as required.



8. Remove and discard 7 x hex head screws (3 on left and 4 on right) from impact beam; remove and discard impact beam.



9. Insert sidearm assembly into chassis rail; loosely secure sidearm assembly to outboard side of chassis rail using 1 x M10 bolt, complete with 1 x M10 flat washer.

Repeat for opposite side of vehicle.



**Cequent Customer Service**  
Ph: 1800 812 017 Fax: 03 9898 3299  
Email: [info@cequent.com.au](mailto:info@cequent.com.au)  
Post: PO Box 4050, Dandenong South VIC 3175



Towbar Fitting Instructions  
To Suit **VOLKSWAGEN TIGUAN 5NA CL 4**  
Part Number **QTVW219L**  
Rating **2500/100 kg**

PLACE THESE INSTRUCTIONS IN THE VEHICLE'S GLOVEBOX AFTER INSTALLATION IS COMPLETED

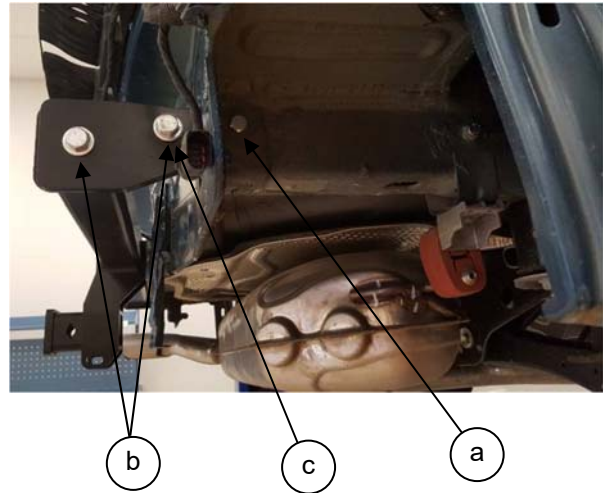
10. a) Loosely secure towbar welded assembly to sidearm assemblies and chassis rail using 1 x M10 bolt per side, complete with 1 x flat washer per bolt.

b) Loosely secure towbar welded assembly to sidearm assemblies using 2 x M12 hex head screws per side, complete with 1 x flat washer per screw.

c) Secure 2 forward M12 hex head screws using 1 x flat washer and 1 x M12 nut per screw.

11. Tighten all fasteners to torques listed below:

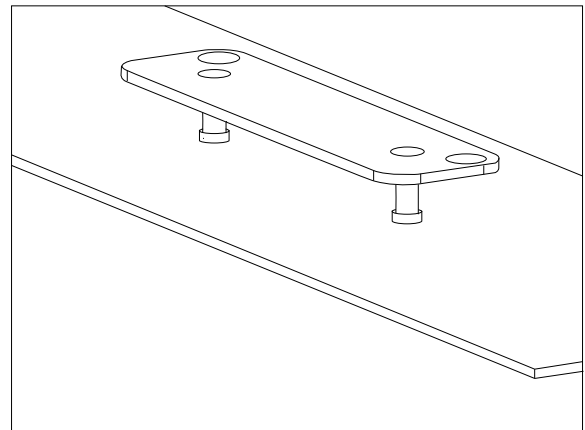
M10 Bolts: 68 N.m  
M12 Screws: 125 N.m



12. Mark out and drill 2 x  $\varnothing 5$ mm holes 69mm apart on bumper skin to support plug bracket. Feed bracket threads through drilled holes prior to reinstalling bumper.

13. Reinstall bumper following steps 1 to 7 in reverse order.

**Note:** Bumper cut may not be required for this installation due to existing window in bumper. Be careful to thread receiver through window before clipping bumper to vehicle. Tape may be needed at areas of the bumper window to minimise the risk of scratches during this operation.



**Cequent Customer Service**  
Ph: 1800 812 017 Fax: 03 9898 3299  
Email: [info@cequent.com.au](mailto:info@cequent.com.au)  
Post: PO Box 4050, Dandenong South VIC 3175



Wiring Loom Fitting Instructions  
To Suit Volkswagen Tiguan 5NA  
Part Number 101605-WL

## Wiring Loom Installation Instructions

Volkswagen Tiguan 5NA  
Part No: 101605-WL

Tail Harness Length Required: 1800mm  
ECU Required: 04827

Wiring Loom Installation Time: Approx 30 Mins

**Important**



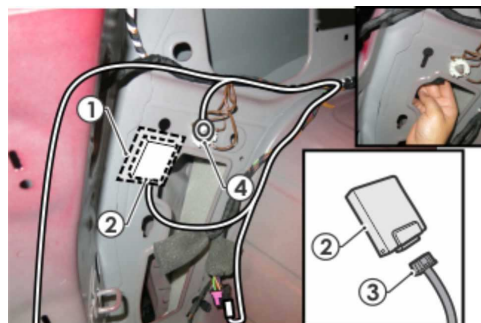
Due to possible vehicle variations, always confirm any noted vehicle colour wires with a multi-meter to ensure the correct function is identified before soldering or scotch locking. For vehicle wires denoted with two colours (example; RED/GREEN) the first colour will always be the main wire colour while the second colour is the thinner trace colour on the wire.

## Wiring Loom Fitting Instructions To Suit Volkswagen Tiguan 5NA Part Number 101605-WL

1. At the rear of the vehicle, remove the vehicle sun shade, luggage compartment floor trim and the luggage compartment rear trim.
2. Fold down the rear seats and remove the spare wheel and tool tray.
3. On the LHS remove the three hex screws from the bottom corner trim and remove the hex screw from the luggage hook. **(Repeat for RHS).**
4. Remove the LHS trim rear clip. Remove the hex screw from behind the rear seat release. **(Repeat for RHS).**
5. Remove the upper hex screw from the LHS trim. **(Repeat for RHS).**
6. Remove the LHS rear passenger scuff plate by first removing the scuff plate rear clip. **(Repeat for RHS).**
7. Remove the LHS seatbelt trim before removing the LHS trim front clip. Dislodge the LHS trim. **(Repeat for RHS).**
8. In the LHS corner, remove the smaller vehicle grommet.
9. Locate the vehicle 6-way breakout connector and peel back the foam.
10. Insert the trailer patch orange wire terminal into the corresponding cavity on the vehicle breakout connector shown in the table below. **Ensure the terminal is pushed in all the way before securing with electrical tape.**

Function	Trailer Patch	Vehicle Harness
12V+	ORANGE	PURPLE/YELLOW

11. Using an alcohol wipe, clean the LHS inner sheet metal area (1) and the underside of the ECU (04827) (2).
12. Apply double sided tape to the ECU (2) and secure it to the vehicle sheet metal in the area shown. Connect the trailer patch 12-way connector (3) to the ECU. **Ensure the ECU connector is facing downwards.**

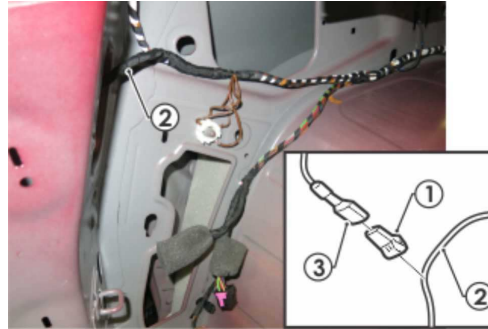


13. Secure the trailer patch ground ring terminal (4) to the vehicle grounding point.



## Wiring Loom Fitting Instructions To Suit Volkswagen Tiguan 5NA Part Number 101605-WL

14. On the LHS, following the table below, connect the ezy-taps (1) to the mating tail light harness wires (2). Then connect the trailer patch wires (3) to the correct ezy-taps (1). If on the same circuit, connect the brown and black wire. Tape back the rest and black wires. **Test the vehicle wires first to confirm the functions.**



Function	Trailer Patch	Vehicle Harness
Left Indicator	YELLOW/BLACK	BLACK/WHITE

15. If the brake and tail are on the same circuit follow steps **15a**, otherwise follow step **15b**.

- a) On the LHS, connect the ezy-tap (1) to the mating tail light harness wire (2). Then connect the trailer patch wire (3) to the correct ezy-tap (1).

Function	Trailer Patch	Vehicle Harness
Brake/Tail	BROWN/BLACK	BLACK/RED

**Note: Test the vehicle wires to confirm the functions.**

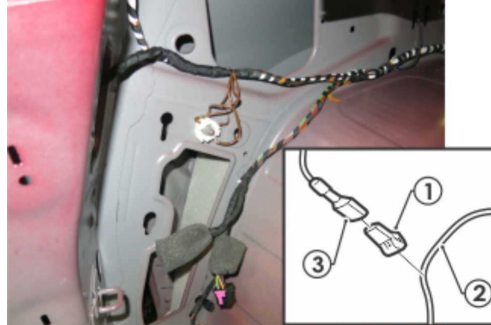
- b) On the LHS, connect the ezy-taps (1) to the mating tail light harness (2) wires as follows; connect the brown and black wire to the tail, red and black wire to the brakes.

**Note: Test the vehicle wires first to confirm the functions.**

16. Locate the harness that runs towards the vehicle tailgate then, following the table below, connect the ezy-tap (1) to the mating vehicle harness wire (2). Then connect the trailer patch wire (3) to the ezy-tap (1). **Test the vehicle wires first to confirm the functions.**

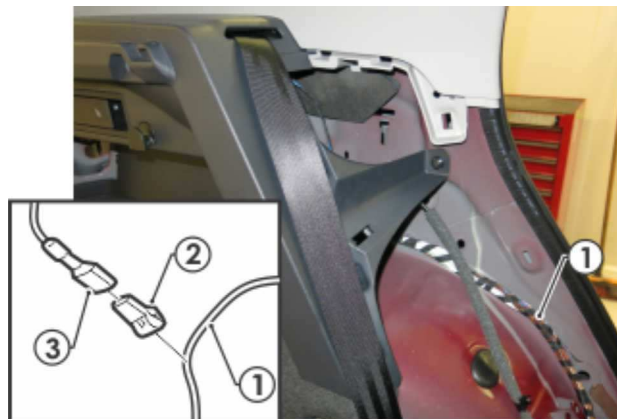
# TRAILBOSS

## Wiring Loom Fitting Instructions To Suit Volkswagen Tiguan 5NA Part Number 101605-WL



Function	Trailer Patch	Vehicle Harness
Reverse	BLACK	GREEN/BLACK

17. Route the Trailer Patch Harness along the boot towards the RHS tail light harness (1).
18. Following the table below, connect the ezy-tap (2) to the mating tail light harness wire (1). Then connect the trailer patch wire (3) to the ezy-tap (2). **Test the vehicle wires first to confirm the functions.**



Function	Trailer Patch	Vehicle Harness
Right Indicator	GREEN/BLACK	BLACK/GREEN

19. Mount the trailer socket to the towbar mounting bracket using M4 fasteners (not supplied).
20. Route the tail harness (tail length 1800mm) towards the LHS and into the previously removed grommet hole. Adjust the trailer patch harness grommet so that it is seated correctly. **Keep harness routing clear of all sharp edges, moving parts and places of extreme heat.**
21. Connect the tail harness 8-way connector to the trailer patch mating 8-way connector.



Wiring Loom Fitting Instructions  
To Suit Volkswagen Tiguan 5NA  
Part Number 101605-WL

- 22. Refit tail lights.
- 23. The RPA function can be disabled via a switch next to the gear shifter.
- 24. Test the Trailer Wiring Harness functionality using a lightboard or multimeter.
- 25. Secure the all harnesses using cables ties (not supplied).
- 26. Re-fit all removed parts and secure all fasteners, ensuring there are no squeaks or rattles.
- 27. Place instructions in glove box after fitment.

