



Towbar Fitting Instructions
 To Suit **RENAULT CAPTUR J87 SERIES**
 Part Number **RE17L**
 Rating **900/75 kg**

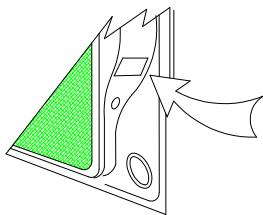
PLACE THESE INSTRUCTIONS IN THE VEHICLE'S GLOVEBOX AFTER INSTALLATION IS COMPLETED

WARNING:

1. Do not, drill, cut, weld or otherwise modify the tow bar.
2. If you are using electric welding on a motor vehicle, **always** check that the vehicle is not equipped with electronic engine or instrument management equipment. Failure to do so could **destroy** any onboard computers. If in doubt, check with the vehicle's manufacturer.
3. The high tensile fasteners supplied with this product were used to achieve the specified rating. If replacement is required ensure that fasteners of the same rating & quality are used. Contact an authorised **Trailboss** dealer if further information is required.
4. If TBM is used in inverted position tow ball may make contact with rear tailgate when lowered, which could cause damage.

General:

1. Ensure all hardware items have been included refer to assembly diagram.
2. It is recommended that the instructions are read through and completely understood before making any attempt to fit this product.
3. Be wary of any changes to vehicle designs or other accessories that may conflict with the installation of this product.
4. Before drilling ensure that the area is clear of fuel, electrical & other components.
5. All holes drilled into the body panels shall have all burrs & swarf removed then coated with a suitable rust preventative paint.
6. For vehicles that require the bumper to be cut. Ensure cut out area is in correct position on the vehicle prior to cutting the bumper.
7. The high tensile fasteners supplied with this product were used to achieve the specified rating. If replacement is required ensure that fasteners of the same rating & quality are used. Contact an authorized **Trailboss** dealer if further information is required.
8. Ensure that all hardware is fastened to torque list below check fasteners on regular basis.
9. Tow bar load rating sticker provided with this product shall be conspicuously located on inside rear end of the driver's door. **(See diagram below).**
10. Trailboss recommends that you check your tow ball to ensure that it complies with the Australian standards **AS 4177.2**.
11. **PLEASE NOTE:** It is advised to remove your lug or tbm when not actually towing so as to produce a clear view of the vehicles registration plate if obscured, and to also provide maximum available departure angle
12. Pull Pin must be fit in down position.



Place load rating sticker
inside driver's door here

FOR TRAILER TOWING PURPOSES ONLY
 For towing capacity details please refer to vehicle owner's manual or to the manufacturer. Overloading can void your warranties.

RECOMMENDED ASSEMBLY TORQUE LISTING

Diameter	Grade 8.8 Bolt
M6	9.5 Nm
M8	21.7 Nm
M10	43.4 Nm
M12	77.3Nm
M14	146 Nm
M16	189.8 Nm

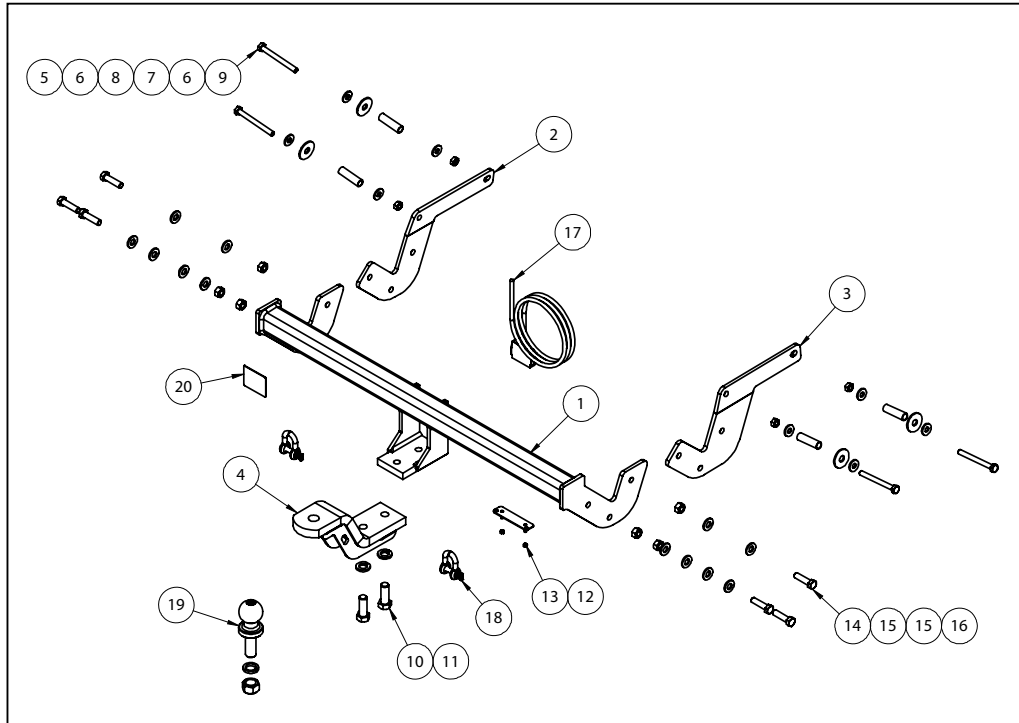
Tow bar Maintenance and Care.

Trailboss recommends that bolt torque's, as listed below, are routinely and regularly inspected and checked for correct tension. Replace any worn or defective parts.
 We recommended to remove Tow Ball Mounts (TBM's, tongues or lugs) when not being used for any considerable length of time.
 So as to avoid injury, when not towing it is suggested that the tongue, Pull Pin and R-clip are removed then stored in a safe, clean and dry place, away from excessive moisture.
 Hitch Pull Pins and spring "R" clips are regularly checked for proper installation. Replace any worn or defective parts.

TRAILBOSS

Towbar Fitting Instructions
 To Suit **RENAULT CAPTUR J87 SERIES**
 Part Number **RE17L**
 Rating **900/75 kg**

PLACE THESE INSTRUCTIONS IN THE VEHICLE'S GLOVEBOX AFTER INSTALLATION IS COMPLETED



QTY.	DESCRIPTION	ITEM NO.
1	RENAULT CAPTUR WELDED ASSY	1
1	SIDE ARM LHS	2
1	SIDE ARM RHS	3
1	LUG ASSY	4
4	NUT HX M10-1.25 Z/P	5
8	WASHER FT M10 X 25.4 X 3	6
4	Ø42mm FITTING PLATE	7
4	SPACER TUBE 16 x 1.6MM	8
4	BOLT M10x100x1.25	9
2	BOLT M16 x 45 2.0P	10
2	SPRING WASHER M16 X 5 X 3.5	11
1	PLUG BRACKET	12
2	NUT NYLOC M4-0.7 Z/P	13
6	SET SCREW M12x45x1.25P	14
12	WASHER FLAT 1/2"x1 1/8"x1/8"	15
6	HEX NUT M12x1.25 PC8	16
1	WIRING LOOM	17
2	10mm "D" SHACKLE	18
1	50mm TOWBALL	19
1	ACRYLIC COMPLIANCE PLATE	20



Towbar Fitting Instructions
To Suit **RENAULT CAPTUR J87 SERIES**
Part Number **RE17L**
Rating **900/75 kg**

PLACE THESE INSTRUCTIONS IN THE VEHICLE'S GLOVEBOX AFTER INSTALLATION IS COMPLETED

INSTRUCTION:

1. Release tail gate to expose boot space.
2. Remove 3 x Screws. Next to the tail light and directly below on the bumper.
Remove and disconnect tail lights. Repeat for opposite side.
3. Carefully peel away outer guard moulding to allow for bumper removal.
Remove push rivet securing bumper to rear guard. Repeat for opposite side.
4. Remove 3 x Screws. On the underside of the bumper near the tyre. Repeat for opposite side.
5. Remove 2 x Screws. Located on the centre and on the underside of the bumper.
6. Carefully remove bumper by peeling away at the edges and pull back on the centre of the bumper. Keep in a safe place for re-assembly.
Remove 4 x Flange Nuts on rear panel, discard intrusion beam.
7. Place both sidearms up against respective chassis rails. Use the 2 x M10 x 100 Screws, complete with Flat Washers, Washer Plate and Nut to loosely secure arms.
Note: On the passenger side chassis rail you are required to unbolt the exhaust hanger for fitment. Cut the tab section of the heat shield to allow for installation of the passenger sidearm. Re-install exhaust hanger.
8. Position centre section of the Towbar in relation to the side arms. Loosely secure using 6 x M12 x 45 Set Screws, complete with Flat Washers and Nuts.
Torque all fasteners to the specifications listed below:
M10 x 100 x 1.25P : 50Nm
M12 x 45 x 1.25P : 125Nm
9. Mark out and drill 2 x 5mm holes 69mm apart onto bumper skin to support plug bracket. Feed bracket threads through drilled holes prior to reinstalling bumper.
10. Re-Install bumper by following steps 1-5 in reverse order.



Wiring Loom Fitting Instructions
To Suit Renault Captur
Part Number 100531-WL

Wiring Loom Installation Instructions

Renault Captur
Part No: 100531-WL

ECU Required: 04826
Tail Harness Length Required: 1800mm
Power Harness Required: 04825

Wiring Loom Installation Time: Approx. 60 Mins

Note: Due to possible vehicle variations, always confirm any noted vehicle colour wires with a multi-meter to ensure the correct function is identified before soldering or scotch locking.

Wiring Loom Fitting Instructions To Suit Renault Captur Part Number 100531-WL

1. On the rear luggage compartment, remove the floor carpet.
2. Remove the parcel shelf.
3. Fold the rear passenger seats forward.
4. Remove the spare wheel carpet cover.
5. Remove the rear luggage trim.
6. Remove the RHS of the luggage compartment trim by removing the two screws.

Repeat for the LHS.

7. On the LHS of the luggage compartment, carefully exposed the light connector and disconnect.
8. Remove the LHS luggage compartment trim.
9. Remove the rear passenger LHS door trim.
10. Remove the driver's LHS door trim.
11. Remove the front passenger's kick panel trim. Open the glove compartment and open the fuse panel.
12. At the LHS exterior rear quarter underside of the vehicle, remove the vehicle grommet (1) and drill the grommet hole out to Ø30mm. **Ensure the interior area is clear of obstructions before drilling. Note: If the vehicle grommet is occupied, drill into the sheet metal next to the grommet (2).**

Apply rust inhibitor (not supplied) after drilling.





Wiring Loom Fitting Instructions
To Suit Renault Captur
Part Number 100531-WL

13. On the LHS of the luggage compartment, following the table below, connect the trailer patch ezy-taps to the vehicle harness wires and then connect the trailer patch terminals to the corresponding wires.

Function	Trailer Patch	Vehicle Connector
L.IND	YELLOW / BLACK	GREY / BLUE
REVERSE	BLACK / WHITE	PINK / WHITE
TAIL	BROWN / BLACK	BLUE
BRAKES	RED / BLACK	PINK

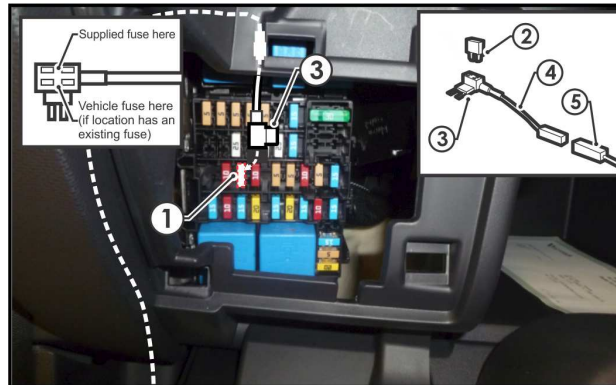
14. On the LHS luggage compartment, using an alcohol wipe (not supplied), clean the inner sheet metal.
15. Connect the 12-way trailer patch connector to the ECU (P/No: 04826) and adhere the ECU to the cleaned area on the inner sheet metal in a suitable area. Ensure the ECU is mounted with the connector pointing downwards.
16. Secure the trailer patch WHITE wire ground terminal to the vehicle grounding point using the existing fasteners.
17. Route the trailer patch along the rear of the luggage compartment towards the RHS of the luggage compartment.
18. On the RHS of the luggage compartment, following the table below, connect the ezy-tap to the vehicle harness wire and then connect the trailer harness terminal to the corresponding wire.

Function	Trailer Patch	Vehicle Harness
R. IND	GREEN / BLACK	WHITE / BLACK

19. Route the power harness along the LHS of the rear passenger side, past the 'B' pillar trim, towards the front of the vehicle.
20. Continue routing the power harness along the LHS of the passenger side towards the fuse panel.

Wiring Loom Fitting Instructions To Suit Renault Captur Part Number 100531-WL

21. Inside the fuse panel, locate the vacant slot (1) as shown (If there is a fuse, remove and keep).
Note: Due to vehicle variations, if no vacant spot is available, use a multi-meter to locate an existing fuse location that has constant 12V.
22. Insert the supplied fuse (2) into the upper slot of the add-a-fuse (3).
23. Plug the add-a-fuse (3) into the vacant slot (1) on the fuse panel (If there is a vehicle fuse, insert it into the lower slot as shown).
24. Connect the power patch 1-way connector (4) into the add-a-fuse harness mating connector (5).



25. Mount the trailer socket to the tow bar mounting bracket using M4 fasteners (not supplied).
26. Route the tail harness across the tow bar towards the LHS of the vehicle and through the previously drilled out hole.
27. Ensure the tail harness grommet is seated correctly and secure in place using a cable (not supplied).
28. Connect the tail harness (tail length 1800mm) 8-way connector to the trailer patch mating 8-way connector.
29. Test the trailer wiring harness function using a light board or multi-meter.
30. Secure all harnesses using cable ties (not supplied).
31. Re-fit all removed parts and secure all fasteners, ensuring there are no squeaks or rattles.
32. Place the fitting instructions in the glove box after fitment.