

TRAILBOSS

Towbar Fitting Instructions To Suit **SUZUKI S-CROSS** Part Number **SU41L** Rating **1200/120 kg**

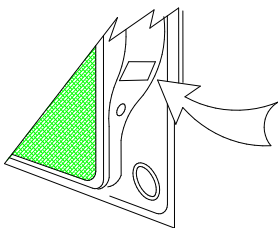
PLACE THESE INSTRUCTIONS IN THE VEHICLE'S GLOVEBOX AFTER INSTALLATION IS COMPLETED

WARNING:

1. Do not, drill, cut, weld or otherwise modify the tow bar.
2. If you are using electric welding on a motor vehicle, **always** check that the vehicle is not equipped with electronic engine or instrument management equipment. Failure to do so could **destroy** any onboard computers. If in doubt, check with the vehicle's manufacturer.
3. The high tensile fasteners supplied with this product were used to achieve the specified rating. If replacement is required ensure that fasteners of the same rating & quality are used. Contact an authorised **Trailboss** dealer if further information is required.
4. If TBM is used in inverted position tow ball may make contact with rear tailgate when lowered, which could cause damage.

General:

1. Ensure all hardware items have been included refer to assembly diagram.
2. It is recommended that the instructions are read through and completely understood before making any attempt to fit this product.
3. Be wary of any changes to vehicle designs or other accessories that may conflict with the installation of this product.
4. Before drilling ensure that the area is clear of fuel, electrical & other components.
5. All holes drilled into the body panels shall have all burrs & swarf removed then coated with a suitable rust preventative paint.
6. For vehicles that require the bumper to be cut. Ensure cut out area is in correct position on the vehicle prior to cutting the bumper.
7. The high tensile fasteners supplied with this product were used to achieve the specified rating. If replacement is required ensure that fasteners of the same rating & quality are used. Contact an authorized **Trailboss** dealer if further information is required.
8. Ensure that all hardware is fastened to torque list below check fasteners on regular basis.
9. Tow bar load rating sticker provided with this product shall be conspicuously located on inside rear end of the driver's door. **(See diagram below).**
10. Trailboss recommends that you check your tow ball to ensure that it complies with the Australian standards **AS 4177.2**.
11. **PLEASE NOTE:** It is advised to remove your lug or tbn when not actually towing so as to produce a clear view of the vehicles registration plate if obscured, and to also provide maximum available departure angle
12. Pull Pin must be fit in down position.



Place load rating sticker
inside driver's door here

FOR TRAILER TOWING PURPOSES ONLY
For towing capacity details please refer to vehicle owner's manual or to the manufacturer. Overloading can void your warranties.

RECOMMENDED ASSEMBLY TORQUE LISTING

<u>Diameter</u>	<u>Grade 8.8 Bolt</u>
M6	9.5 Nm
M8	21.7 Nm
M10	43.4 Nm
M12	77.3Nm
M14	146 Nm
M16	189.8 Nm

Tow bar Maintenance and Care.

Trailboss recommends that bolt torque's, as listed below, are routinely and regularly inspected and checked for correct tension. Replace any worn or defective parts.

We recommended to remove Tow Ball Mounts (TBM's, tongues or lugs) when not being used for any considerable length of time.

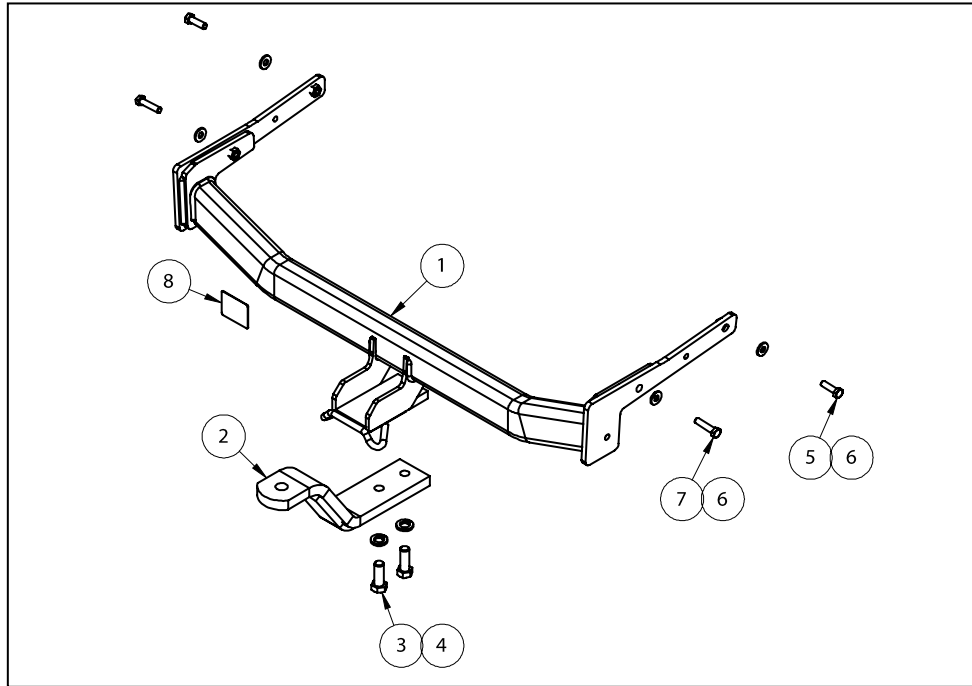
So as to avoid injury, when not towing it is suggested that the tongue, Pull Pin and R-clip are removed then stored in a safe, clean and dry place, away from excessive moisture.

Hitch Pull Pins and spring "R" clips are regularly checked for proper installation. Replace any worn or defective parts.

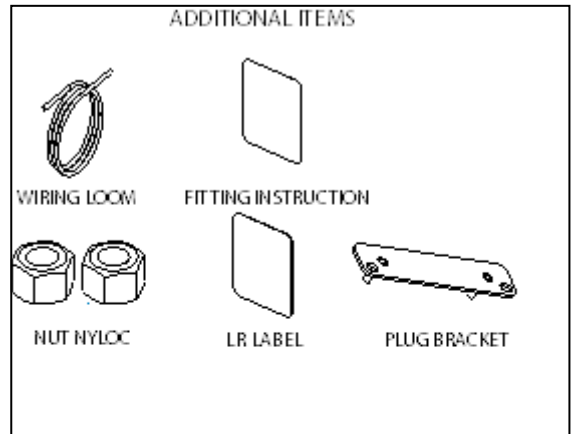
TRAILBOSS

Towbar Fitting Instructions
 To Suit **SUZUKI S-CROSS**
 Part Number **SU41L**
 Rating **1200/120 kg**

PLACE THESE INSTRUCTIONS IN THE VEHICLE'S GLOVEBOX AFTER INSTALLATION IS COMPLETED



QTY.	DESCRIPTION	ITEM NO.
1	SUZUKI SX4 WELDED ASSY	1
1	LUG ASSEMBLY	2
2	BOLT M16x45 2.0P	3
2	SPRING WASHER M16x5x3.5	4
2	BOLT M10-1.50x3510.9	5
4	WASHER FT M10x25.4x3	6
2	SET SCREW HEX HD M10x45x1.5P	7
1	ACRYLIC COMPLIANCE PLATE	8





Towbar Fitting Instructions
To Suit **SUZUKI S-CROSS**
Part Number **SU41L**
Rating **1200/120 kg**

PLACE THESE INSTRUCTIONS IN THE VEHICLE'S GLOVEBOX AFTER INSTALLATION IS COMPLETED

INSTRUCTION:

1. Unclip the Wheel Arch cover from guard. Then remove Set Screw securing Bumper to guard. Repeat for opposite side.
2. Remove 2x Scrivets on wheel arch and bottom of the bumper. Repeat for opposite side.
3. Remove 2x Set Screws from underneath the rear bumper.
4. Open tailgate of vehicle and remove 1x Set Screw. Repeat for opposite side.
5. Remove Bumper from vehicle by carefully pulling downward and away. Use caution when disconnecting any factory fitted electrical accessories.
6. Remove 8 stud flange Nuts on the back panel of the vehicle (4 on LHS and 4 on RHS) to remove the impact beam. Discard after removal.
7. Using a 12MM drill bit, re drill the most reward mounting point for both the LHS and RHS of the chassis rails.
8. Offer Towbar to vehicle by lifting and inserting into chassis rails. **Note: Two person lift seek assistance.**
9. Secure Towbar to the vehicle using two M10x45mm Set Screws and M10 Flat Washers on the rear most mounting point (A). Then use the M10x35mm Set Screws and M10 Flat Washers at the forward most mounting points (B). Torque bolts as specified on Page 1.
10. Trim excess plastic protruding from the inside Bumper. This is located on the back of centre fog light.
11. Locate the centreline of the Bumper. Measure approximately 50mm either side of the centre line and from the edge of the bumper 100mm. Cut the bumper to suit.
12. Reattach Bumper following steps 1 to 5 in reverse.



Wiring Loom Fitting Instructions
To Suit Suzuki SX-4
Part Number 101002-WL

Wiring Loom Installation Instructions

Suzuki SX-4
Part No: 101002-WL

Tail Harness Length Required: 1200mm

Wiring Loom Installation Time: Approx 20 Mins

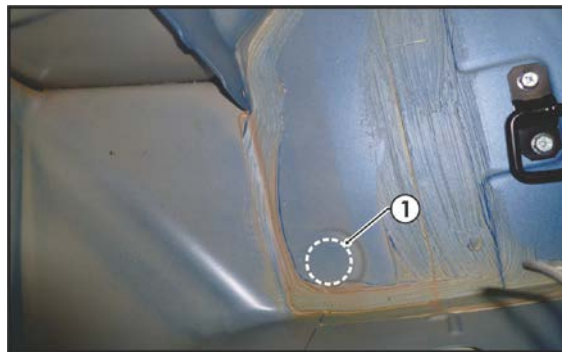
TRAILBOSS

Wiring Loom Fitting Instructions To Suit Suzuki SX-4 Part Number 101002-WL

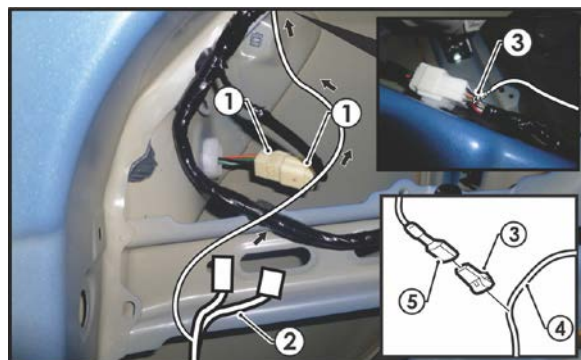
1. Inside the luggage compartment, remove the following from the vehicle; the parcel shelf, floor carpet cover and the rear trim by removing the two fasteners. Fold down the rear seats.
2. Remove the rear luggage compartment LHS trim by removing the three fasteners and then carefully dislodge the trim.

Repeat for the RHS.

3. At the LHS rear quarter area, drill a 30mm hole (1) into the vehicle. Spray on rust inhibitor (not supplied) after drilling.



4. Disconnect the LHS tail light connector (1) and patch the trailer patch (P/No:101002-WL) connectors (2) in between.
5. Following the table below, connect the ezy-tap (3) to the 'RED' reverse wire (4), then connect the terminal (5) to the ezy-tap (3).



Function	Trailer Patch	Vehicle Connector
REVERSE	BLACK / WHITE	RED

Note: Check the reverse wire with multi-meter first.

6. Route the trailer patch towards the vehicle RHS tail light assembly area.



Wiring Loom Fitting Instructions
To Suit Suzuki SX-4
Part Number 101002-WL

7. Disconnect the RHS tail light connector and patch the trailer patch (P/No:100102-WL) connectors in between.
8. Mount the trailer socket to the tow bar mounting bracket using M4 fasteners (not supplied).
9. Route the tail harness (tail length: 1200mm) across the tow bar towards the LHS of the vehicle and up through the previously drilled out hole.
10. Ensure the tail harness grommet is seated correctly and secure in place using a cable tie (not supplied).
11. Connect the trailer patch connector to the tail harness mating connector.
12. Test the trailer patch function using a light board or multi meter.
13. Secure all harnesses using cable ties (not supplied).
14. Re-fit all removed parts and secure all fasteners, ensuring there are no squeaks or rattles.
15. Place the fitting instructions in the glove box after fitment.