

Fitting Instructions



SKU

T7Z737

PRODUCT

TAG Heavy Duty Towbar and Rear Step for Hyundai iLoad (01/2008 - on)

SPECIFICATIONS

- Towbar Class: CL 4 Heavy Duty
- Towing Capacity: 2000kg
- Tow ball Weight: 150kg
- Approx. Fitment Time: 90 Minutes



Scan for latest version of these instructions

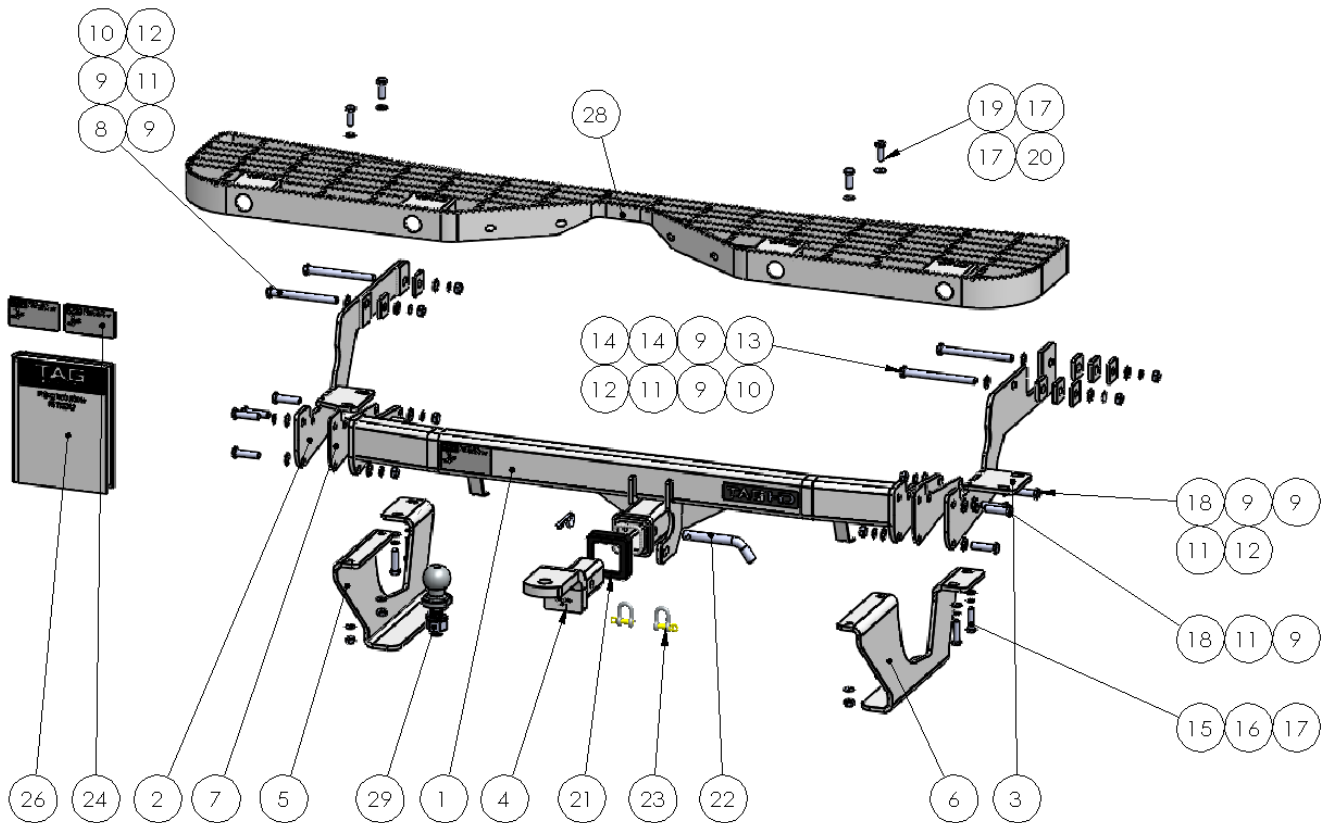
TOOLS REQUIRED

- Spanners
- Sockets
- Air Saw or similar.
- Trim Removal Tool
- Torque Wrench

IN THIS GUIDE

- Fitment Instructions
- Torque Settings
- Warranty Info

Towbar Assembly



ITEM NO.	DESCRIPTION	QTY	ITEM NO.	DESCRIPTION	QTY
1	Main Bar Assembly	1	16	M10 Shakeproof Washer	4
2	End Plate Assembly PS	1	17	M10 Flat Washer	12
3	End Plate Assembly DS	1	18	M12 x 1.75 x 45 Hex Set Screw	8
4	TAG Tow Ball Mount - L4120	1	19	M10 x 30 x 1.25 Bolt	4
5	PS Step Bracket	1	20	M10 x 1.25 Nut	4
6	DS Step Bracket	1	21	TAG Hitch Cover	1
7	End Plate Spacer 3mm	2	22	Class 4 Pin & Clip	1
8	M12 x 1.75 x 130 Bolt	2	23	D-Shackle - 10mm. 1000kg	2
9	M12 Flat Washer	22	24	TAG Compliance Sticker	3
10	M12 40x40x6 Top Plate	4	25	TAG HD Sticker 150 x 33mm	1
11	M12 Shakeproof Washer	12	26	Fitting Instruction	1
12	M12 x 1.75 Nut	10	27	TAG Rear Step with Towing Relief	1
13	M12 x 1.75 x 140 Bolt	2	28	50mm TAG Tow Ball with Flat edge	1
14	D/S Spacer 8mm	4			
15	M10 x 40 x 1.25 Bolt	4			

Important Information



Warning:

- This product is for towing purposes only and must only be loaded as shown in your vehicle Owner's Manual.
- This towbar is NOT to be drilled, cut, welded, or modified in any way.
- Check behind chassis rail and body panels before drilling to ensure no hazards are present.
- All load ratings shown are under the assumption your trailer has a functional braking system installed.
- When installed in positions other than the one depicted in these instructions the Tow Ball Mount may interfere or obstruct certain features of your vehicle (tailgate opening, Chassis clearance, etc.)

General:

- Before fitting this towbar read fitting instructions and check installation hardware is correct.
- Check that the towbar is suitable for the vehicle and be wary of any changes to the vehicle design that may conflict with the fitting of this towbar. (Tray, Canopy, Suspension etc.)
- After drilling, blow any filings clear, remove any burrs and treat exposed metal with a rust inhibitor.
- The high tensile fasteners supplied with this product are an integral feature to achieving the specified rating, if replacement is required ensure that fasteners of the same grade (8.8) & quality are used. Contact an authorised TAG distributor or the TAG fitment center - (07) 3208 3022 - if further information is required.

Towbar Maintenance and Care:

It is recommended, when not in use, the Tow Ball Mount assembly and class 4 Pin and Clip is stored inside the car away from moisture to prevent standing water from forming rust. Inspect to ensure, on regular basis, fasteners are torqued to the specifications below and in good condition.

Ensure that the fitting instructions are read and understood prior to fitment, Following the fitment place these instructions in the vehicle's glovebox after installation is completed.

Metric Bolt Torque Settings

Diameter	Pitch	Grade	Torque	Unit		Diameter	Pitch	Grade	Torque	Unit
M8	1.25	8.8	29	Nm		M12	1.25	10.9	125	Nm
M10	1.25	8.8	57	Nm		M12	1.50	10.9	105	Nm
M10	1.50	8.8	44	Nm		M14	1.25	10.9	195	Nm
M12	1.25	8.8	101	Nm		M14	1.50	10.9	165	Nm
M12	1.50	8.8	97	Nm		M16	1.25	10.9	295	Nm
M12	1.75	8.8	77	Nm		M16	1.50	10.9	250	Nm
M14	2.00	8.8	122	Nm		50mm Tow Ball	N/A	N/A	300	Nm
M16	2.00	8.8	190	Nm		70mm Tow Ball	N/A	N/A	750	Nm

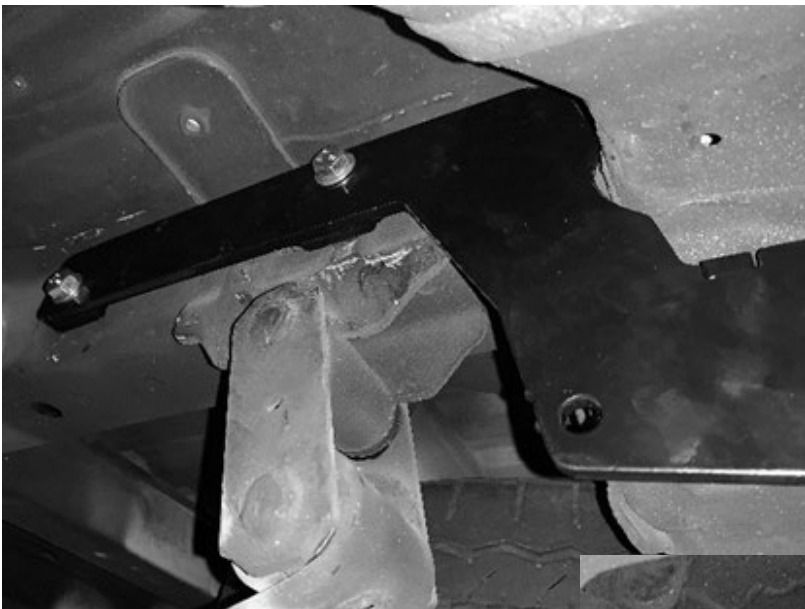
Step 1: Remove Bumper

- a. Open rear door(s).
- b. Remove 1 bolt either side of the rear door,
- c. Lower the spare tyre.
- d. Remove screws and plastic rivets securing the rear bumper. Inside each wheel arch, under the bumper behind mudflap & along the bottom of the bumper.
- e. Beginning at each wheel arch, unclip the bumper from the vehicle.
- f. Remove 2x bolts on each chassis rail fastening the impact beam.
- g. Remove the bumper with the impact beam attached.
- h. Separate the impact beam from the bumper & discard Impact beam.



Step 2: Fit Towbar

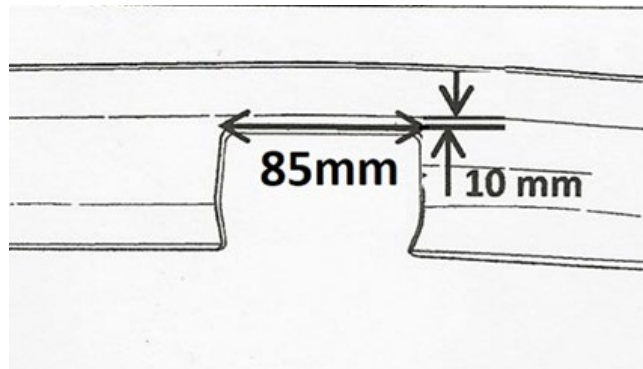
- a. Lift the DS Endplate assembly up to the inside of the chassis and align the holes. Insert 2x M12 x **140** bolts with flat washers, 2x 8mm chassis plates on each bolt between the end plate and chassis rail. Fasten loosely on the other side with M12 nuts, flat and shakeproof washers and 6mm square plates.
- b. Lift the PS Endplate assembly up to the outside of the chassis and align the holes. Insert 2x M12 x **130** bolts and flat washers. Loosely fasten on the other side with M12 nuts, flat and shakeproof washers and 6mm square plates.
- c. Position the towbar crossmember between the two end plates. If there is more than approx. 3mm clearance between the parts on each side, then spacers will be required. If the clearance is less than this, spacers will not be required between the parts.
- d. Insert 3x M12x 1.75x 45 bolts with flat washers into the three lower holes of each end plate and loosely fasten with flat & shake proof washers & nuts. Insert M12x1.75x45 bolt with flat & SP washer into upper rearmost hole & loosely fasten. Repeat on opposite side.
- e. Tighten all bolts according to the torque specification on page 3.



Step 3: Cut Bumper

Note: The towbar installer is ultimately responsible for the location & quality of the bumper cut. To avoid mistakes, please use the following measurements as a guide only. We suggest making small incremental cuts and regularly test-fit the bumper to ensure an accurate and tidy appearance. The additional application of rubber pinch-weld around the cut edge ensures a neat & tidy look.

- a. Establish the centre of the bumper.
- b. Mark the cut-out as indicated in the diagram below.
- c. Cut the bumper using an air hacksaw or other suitable cutting device.
- d. De-burr all cut edges.
- e. Refit bumper in reverse of step 1.



Step 4: Fit the Step.

- Lift step mounts up to the bottom of each chassis and insert M10 x 1.25 x 40 bolts with flat & shakeproof washers.
- Lift step onto step mounts & align with holes. Insert M10x1.25x30 bolts with flat washers into top and loosely fasten with nuts & flat washers to the underside.
- Align step to bumper.
- Tighten all bolts according to the torque specification on page 3.



Step 5: Complete Towbar & Apply Spare Compliance Label

- Attach TAG Hitch cover with rubber mallet carefully to prevent breaking.
- Attach Tow ball to Ball Mount and slide hitch into towbar and secure with Pin and Clip if you are going to tow straight away, alternatively secure Ball Mount in a safe place inside your car.
- Apply one of the compliance labels to the pillar of the driver's door. Leave the remaining label and the fitting instructions in the vehicle handbook.



TAG Warranty Statement



SWD warrants your TAG Towbar for its full product life under the following conditions:

- You can show proof of purchase.
- The towbar has been correctly installed by a suitably qualified installer.
- The towbar has not been modified or abused in any way and has only been used for the purpose intended.
- The towbar was not fitted second hand to your vehicle.

The extent of this warranty includes materials and workmanship used in the manufacture of the towbar and is to the equivalent value of current, full replacement cost.

Nothing stated or implied in this warranty limits in any way, the statutory rights that you may have.

To make a claim visit the original installer in the first instance or, if you are unable to or are not satisfied with their help, then contact us direct by phone on 1300 669122 or visit www.swd.com.au.