

TRAILBOSS

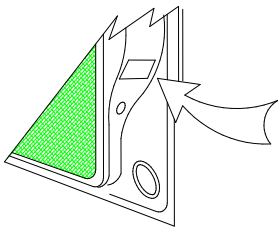
Towbar Fitting Instructions To Suit VOLKSWAGEN GOLF WAGON 2010 on Part Number VW20L Rating 1300 kg

WARNING:

1. Do not, drill, cut, weld or otherwise modify the tow bar.
2. If you are using electric welding on a motor vehicle, **always** check that the vehicle is not equipped with electronic engine or instrument management equipment. Failure to do so could **destroy** any onboard computers. If in doubt, check with the vehicle's manufacturer.

General:

1. Ensure all hardware items have been included refer to assembly diagram.
2. It is recommended that the instructions are read through and completely understood before making any attempt to fit this product.
3. Be wary of any changes to vehicle designs or other accessories that may conflict with the installation of this product.
4. Before drilling ensure that the area is clear of fuel, electrical & other components.
5. All holes drilled into the body panels shall have all burrs & swarf removed then coated with a suitable rust preventative paint.
6. For vehicles that require the bumper to be cut. Ensure cut out area is in correct position on the vehicle prior to cutting the bumper.
7. The high tensile fasteners supplied with this product were used to achieve the specified rating. If replacement is required ensure that fasteners of the same rating & quality are used. Contact an authorized **Trailboss** dealer if further information is required.
8. Ensure that all hardware is fastened to torque list below check fasteners on regular basis.
9. Tow bar load rating sticker provided with this product shall be conspicuously located on inside rear end of the driver's door. **(See diagram below).**
10. Trailboss recommends that you check your tow ball to ensure that it complies with the Australian standards **AS 4177.2.**
11. **PLEASE NOTE:** It is advised to remove your lug or tbn when not actually towing so as to produce a clear view of the vehicles registration plate if obscured, and to also provide maximum available departure angle



Place load rating sticker
inside driver's door here

FOR TOWING PURPOSES ONLY

For towing capacity details please refer to vehicle owner's manual or to the manufacturer. Overloading can void your warranties.

RECOMMENDED ASSEMBLY TORQUE LISTING

Diameter Grade 8.8 Bolt

M6	9.5 Nm
M8	21.7 Nm
M10	43.4 Nm
M12	77.3Nm
M14	146 Nm
M16	189.8 Nm

Tow bar Maintenance and Care.

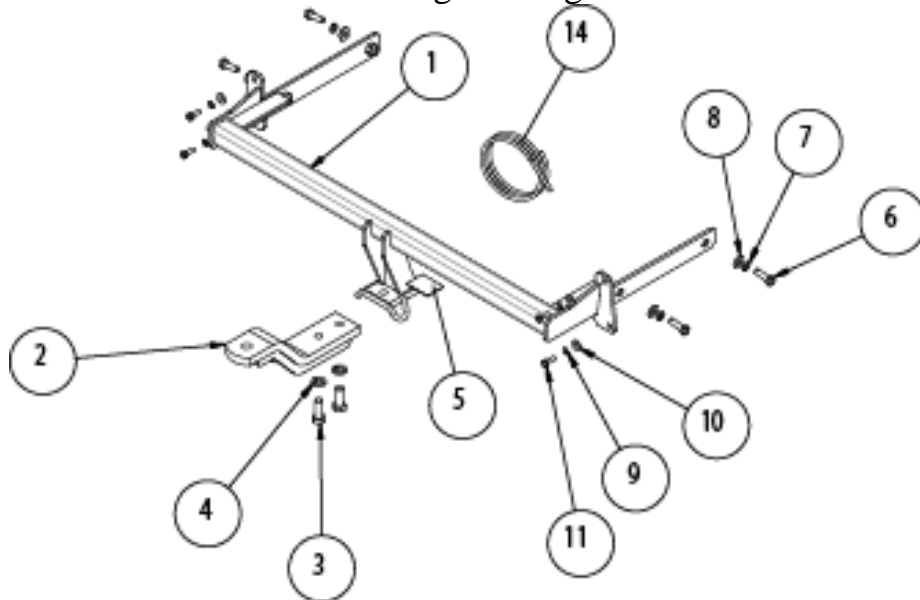
Trailboss recommends that bolt torque's, as listed below, are routinely and regularly inspected and checked for correct tension. Replace any worn or defective parts.

We recommended to remove Tow Ball Mounts (TBM's, tongues or lugs) when not being used for any considerable length of time.

So as to avoid injury, when not towing it is suggested that the tongue, Pull Pin and R-clip are removed then stored in a safe, clean and dry place, away from excessive moisture.

Hitch Pull Pins and spring "R" clips are regularly checked for proper installation. Replace any worn or defective parts.

Towbar Fitting Instructions
 To Suit **VOLKSWAGEN GOLF WAGON** 2010 on
 Part Number VW20L
 Rating 1300 kg




Item 12 & 13 are not shown in the layout diagram

Figure 1 – Layout Diagram

ITEM NO.	DESCRIPTION	QTY.
1	WELDED ASSY GOLF WAGON 2010	1
2	LUG ASSY	1
3	M16 x 45 2.0P BOLT	2
4	M16 X 5 X 3.5 SPRING WASHER	2
5	ACRYLI C CP	1
6	BOLT M12-1.75x40 GR8.8	4
7	M12 X 4.0 X 2.5 SPRING WASHER	4
8	WASHER M12x28.8x3mm	4
9	WSHR SPRING FT SEC M8x3.0x2.0mm z/p	4
10	M8 x 22 x 3.3mm FLAT WASHER	4
11	Bolt M8 x 25 Gr 8.8	4
12	FITTING INSTRUCTIONS	1
13	LOAD RATING LABEL	1
14	WIRING LOOM	1

Towbar Fitting Instructions
To Suit **VOLKSWAGEN GOLF WAGON** 2010 on
Part Number VW20L
Rating 1300 kg

STEPS TO FIT TOWBAR

 Position the vehicle on to a safe working height on the hoist before commencing fitment.

1. Remove screws x 3 and scrivet x 1 from the wheel arch.

Note: Repeat the step for passenger side.

2. Remove screws x 5 from underneath the bumper.
3. Remove the tail light by removing nuts x 3.

Note: Repeat the step for passenger side.

4. Remove screws x 2 after removing the lights.

Note: Repeat the step for passenger side.

5. Pull the bumper outwards, starting from the sides.
6. Remove the impact beam, removing the bolts and discard it.
7. Locate the towbar in the chassis rail, fitting it with the relevant fasteners.
8. Torque the bolts, as shown on page 1.
9. Cut the bumper, as shown in the illustration in Figure 2.
10. Fit the bumper back in reverse order.
11. Affix the load rating label, as shown on page 1.
12. Fit the lug (item 2), when towing, via M16 bolts & washers (items 3 & 4).

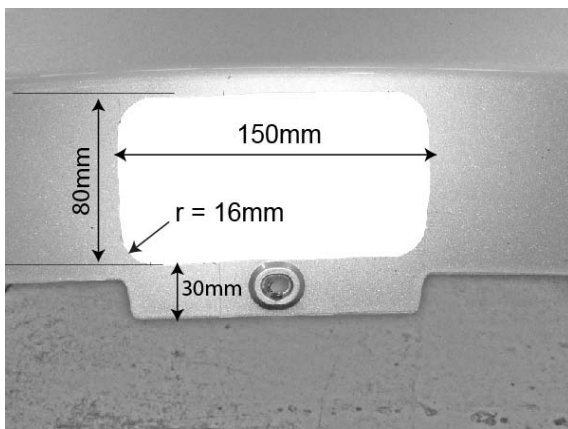


Figure 2 – Bumper Cut out illustration



Wiring Loom Fitting Instructions
To Suit Volkswagen Golf Wagon
Part Number 100301-WL

Wiring Loom Installation Instructions

Volkswagen Golf Wagon
Part No: 100301-WL

Kit Part Includes:

Tail Length Required: 1200mm

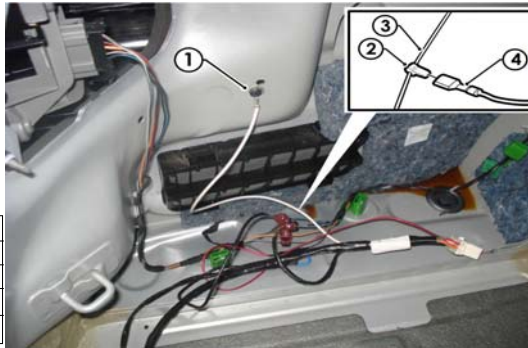
ECU Required Part No: 04831

RPA Override Switch Part No: 04848 (If Fitted)

Wiring Loom Installation Time: Approx 60 Mins

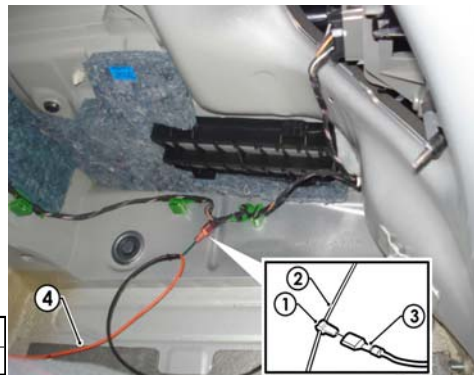
Wiring Loom Fitting Instructions To Suit Volkswagen Golf Wagon Part Number 100301-WL

1. Remove the rear bumper fascia fasteners and then remove the rear bumper.
2. Remove all trims required to gain access to the LHS and RHS rear quarter areas of the vehicle (includes removal of rear passenger seat cushion).
3. Remove the RHS rear and front door sill trims. Remove the driver's kick panel and lower steering wheel garnish side trim to access the fuse panel.
4. At the rear of the vehicle, drill a Ø31mm hole into the area underneath the vehicle grommet. File down any rough or sharp edges and then spray on rust inhibitor.
5. At the LHS rear quarter of the vehicle, secure the trailer patch harness (P/No: 100301-WL) ground terminal (1) to the vehicle sheet metal area above the vent. Secure the supplied ezy tap (2) onto the vehicle harness wire (3) and then connect the corresponding trailer patch harness terminal wires by following the table below.



Function	Vehicle Harness (3)	Trailer Patch Harness (4)
L INDICATOR	BLACK/WHITE	YELLOW/BLACK
TAILS	GREY/BLACK	BROWN/BLACK
REVERSE	BLACK/BLUE	BLACK/WHITE
BRAKES	BLACK/RED	RED/BLACK

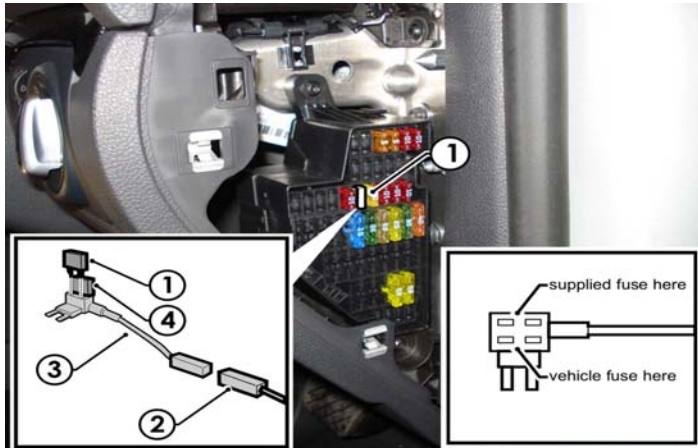
Route the trailer patch harness orange power wire and single wire terminal to the RHS of the vehicle. Secure the supplied ezy taps (1) onto the vehicle harness wires (2) and then connect the corresponding trailer patch harness wire terminal (3) by following the table below. Route the orange power wire (4) along the RHS past the 'B' pillar towards the fuse panel.



Function	Vehicle Harness (2)	Trailer Patch Harness (3)
R INDICATOR	BLACK/GREEN	GREEN/BLACK

Wiring Loom Fitting Instructions To Suit Volkswagen Golf Wagon Part Number 100301-WL

6. From the outside of the vehicle, mount the tail harness (tail length: 1200mm) to the towbar mounting bracket using M4 fasteners (not supplied).
7. Route the tail harness into the drilled out grommet hole. Adjust the tail harness grommet into place and then secure the grommet with a cable tie (not supplied). In the luggage compartment, connect the tail harness connector to the trailer patch harness mating connector.
8. Remove the indicated fuse (1) from the fuse panel and insert it into the top section of the add-a-fuse harness. Connect the trailer patch harness (2) to the add-a-fuse harness (3) and slot in the supplied 20 amp fuse (4) into the lower slot of the add-a-fuse harness (3).



9. Refit the rear bumper fascia.
10. Test the Trailer socket using a light board or multi-meter.
11. Secure all harnesses using cables ties (not supplied).
12. Refit all removed parts and secure all fasteners.
13. Place instructions in glove box after fitment.